


TOWN OF WHITCHURCH-STOUFFVILLE

Customer Service Centre:
905-640-1900 or 1-855-642-TOWN (8696)
Automated Lines:
905-640-1910 or 1-855-642-TOWS (8697)

111 Sandiford Drive, Stouffville, ON L4A 0Z8

www.townofws.ca

NOTICE OF COUNCIL MEETINGS

 Council Chamber • 111 Sandiford Drive
TUESDAY, AUGUST 13
Council Meeting 9:30 a.m.

The agenda for this meeting will be available for review at the Municipal Offices, Whitchurch-Stouffville Public Library and on our website at noon the Thursday prior to the meeting. The Calendar of Council meetings for this year is available on our website.

NOTICES

DOG TAGS SOLD DOOR-TO-DOOR

Dog Tags are now being sold door-to-door by authorized sellers displaying photo identification. The fee for a dog tag is \$45.00 (including tax).



If you have recently moved to Town and your dog has a current, valid Dog Tag from the municipality in which you previously lived, you may qualify for a FREE replacement tag. Please contact our Customer Service Centre for details.

PROTECT YOUR FAMILY AND PETS AGAINST RABIES

The Province of Ontario will begin its annual wildlife rabies control operations for 2013 this August. The ministry is committed to the research, control and eradication of rabies in Ontario and to protecting the health and safety of the public, their pets and the wildlife in this province.

There are many things you can do to protect your family and pets against rabies. For more information or to learn some great tips to protect your family and pets, visit www.ontario.ca/rabies

RECRUITMENT

We are currently accepting applications for the following positions for Fall 2013:

- Lifeguard and Swim Instructor
- Fitness Instructors
- Program Instructors
- Stand-By School Crossing Guards

Must be able to work on an on-call basis at one of the eleven crossing locations in the Community of Stouffville. Applicants must have a vehicle.

Please visit our website for more information.

UPCOMING EVENTS

STOUFFVILLE COUNTRY RIBFEST

Attend the Town of Whitchurch-Stouffville's first annual Stouffville Country Ribfest in Memorial Park. Admission is free. Enjoy hot air balloon rides (Saturday and Sunday - weather permitting), midway/rides, car show, live entertainment and more.

Enjoy ribs, chicken, pulled pork and more from five national, award-winning barbeque pitmasters. The event dates and times are as follows:

- Friday, August 9 from 11 a.m. to 11 p.m.
- Saturday, August 10 from 11 a.m. to 11 p.m.
- Sunday, August 11 from 11 a.m. to 7 p.m.

For more information, please visit www.stouffvillecountryribfest.com

UPCOMING EVENTS

PURCHASE YOUR MAGNA HOEDOWN TICKETS

Event and raffle tickets for the 25th anniversary of the Magna Wild Wild West Hoedown are available for purchase beginning **Saturday, August 10**. Tickets are sold at the Neighbourhood Network office and from all the 2013 Hoedown recipient organizations. This year's Hoedown will take place on Saturday, September 14 at the Magna Campus in Aurora. The event runs from 5 p.m. to midnight and features a Texas-style Barbeque dinner, live entertainment and a Prospector's Raffle. For more information, visit www.hoedown.ca



INSIDE WHITCHURCH-STOUFFVILLE

(held in conjunction with the annual Moonlight Madness sale)

Along Main Street in front of Civic Square

THURSDAY, AUGUST 22

6:30 p.m. to 9 p.m.

Come meet various service groups, volunteer organizations and sports clubs that service the Town and hear how these groups help make Whitchurch-Stouffville a great place to live!

ARE YOU A COMMUNITY-ORIENTED, CHARITABLE, NOT-FOR-PROFIT ORGANIZATION?

Would you like to let people know more about what YOU have to offer? It is not too late to participate. For more information, please contact Jean England at jean.english@townofws.ca.

What's On in Whitchurch-Stouffville

Leisure & Community Services 905-642-PLAY (7529) leisure_services@townofws.ca

LEISURE GUIDE

Fall/Winter issue live online Thursday, August 8. Hard copies available for pick up at the Leisure Centre and the Municipal offices.

FALL PROGRAM REGISTRATION

Online: Residents Tuesday, August 20, 6 p.m.
In person: Residents Thursday, August 22
Non Residents: Tuesday, August 27



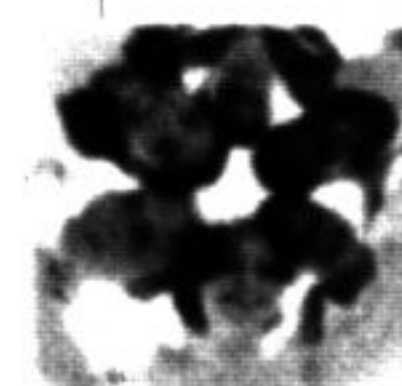
SUMMER CAMP/ SWIM LESSONS

Space still available for August. Register now. Camp Details at www.townofws.ca/camp



SUMMER YOUTH DROP IN - FREE FOR ALL AGES

Supervised Games, sports, activities
Wheler's Park, Tues/Thurs. 2 p.m. to 4 p.m.,
July 2 to August 29 (weather permitting)



Museum 905-727-8954 or 1-888-290-0337 wsmuseum@townofws.ca



Join us as Exhibitors from across southern Ontario display their prized antique & classic cars.

Admission: \$7.00 (children under 7 free)
\$17.00 (per family of up to 4)
To celebrate the 40th anniversary,
Exhibitors receive FREE admission!!

SCHEDULED ACTIVITIES

All Day: Historic Buildings Open, Live Entertainment, Scavenger Hunt, Children's Activities, BBQ and lunchtime Tea Garden

1:30 p.m. Spelling Bee, Bogarttown Schoolhouse
2:15 p.m. Ice Cream Making, Brown House
2:45 p.m. Musket Firing Demonstrations

DON'T MISS

12 p.m. Magic with Rick Mallet
2:30 p.m. to 3:20 p.m. live music with ZedHead
2:30 p.m. to 3:20 p.m. Car Show Awards

INSIDE THE VISITOR'S CENTRE

Tea Garden; With this Ring... A Heritage Wedding Album Exhibit; Discovery Room

Library 905-642-READ (7323) or 1-888-603-4292 www.whitchurch.library.on.ca

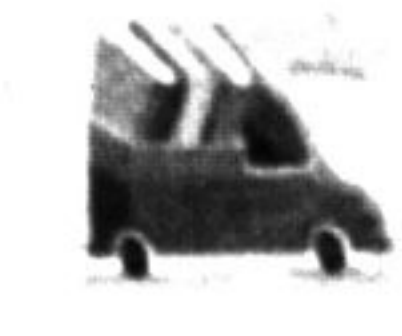
CRAFT @ YOUR LIBRARY

Tuesday, August 27
10:30 a.m. to 11 a.m. | Age 6 - 11 yrs
Admission is free but pre-registration is required!



BOOKS ON WHEELS

Unable to visit the library in person? Volunteers will deliver and pick up library items at your home. Call Catherine at 905-642-7323, ext. 5224 to register



STORYTIME WITH SHARON IN CHINESE

Age 3 - 10 yrs with parent/guardian
Saturdays, July 6 - August 17
10:30 a.m. to 11 a.m.
Peanut free cookie provided



MOVIE DAY @ THE LIBRARY

Monday, August 12, 1:30 p.m. to 3:10 p.m.

"The Croods"

The Croods is a prehistoric comedy adventure that follows the world's first family as they embark on a journey of a lifetime when the cave that has always shielded them from danger is destroyed. Traveling across a spectacular landscape, the Croods discover an incredible new world filled with fantastic creatures - and their outlook is changed forever. Rated PG. Free Admission!



PROGRAMS & SERVICES GUIDE FOR SENIORS

Details on Active Living, Caregiving, Finances, etc. Available in a variety of languages. Pick up your FREE copy now!



Latcham Gallery 905-640-8954 www.latchamgallery.ca

CURRENT EXHIBITION

Peter Sibbald: *Elegy for a Stolen Land*

July 21 - September 16
A solo exhibition of photography examining the consequences of suburban sprawl in our region.



UPCOMING EXHIBITION

Artists and Agents:
Linda Duvall with *Timeanddesire*

September 12 - October 26
Opening Reception: Thursday, September 12, 7 p.m. to 9 p.m.



Hours: Tuesday to Saturday 10 a.m. to 5 p.m.
Email: info@latchamgallery.ca

FREE Family Art Activity

(all ages)

Thursday, August 22, 6:30 p.m. to 9:30 p.m.
Moonlight Madness

Join us in our art tent outside the Gallery for a free art activity for the whole family!

Please visit www.latchamgallery.ca for details.