

FLYERS

Inserts for Thursday, March 14, 2013

- | | |
|---------------------|---------------------|
| IDA STOUFFVILLE* | SUNNY FOODMART* |
| DALES IDA* | FOODLAND* |
| WARDEN IDA* | BESTCO* |
| GUARDIAN DRUGS* | DIRECT BUY* |
| FOODY MART* | EVERGREEN |
| FIRST CHOICE | COMMERCIAL |
| SUPERMARKET* | CLEANING* |
| GRAND FORTUNE FOOD* | URBAN PLANET* |
| 2001 AUDIO* | ROAD READER PAVING* |
| WALK N COMFORT* | TSC STORES* |
| TIGER DIRECT* | FRESHCO* |
| REAL CANADIAN | APPLE TREE LEARNING |
| SUPERSTORE* | CENTRE* |
| NO FRILLS* | M&M MEAT SHOPS* |
| LOBLAWS* | PHARMASAVE* |
| ZEHRS* | LOWES* |
| WALMART* | LONGOS* |
| WALMART | SEARS* |
| SUPERCENTRE* | SHOPPERS* |
| MICHAEL ANGELO'S* | METRO* |
| KS CARGO* | THE BAY* |
| THE SOURCE* | TOYS R US* |
| CLERA WINDOWS & | FUTURE SHOP* |
| DOORS* | STAPLES* |
| LIVING ARTS CORP* | CANADIAN TIRE* |
| GIANT TIGER* | FOOD BASICS* |
| UNITED FURNITURE | PAYLESS SHOES* |
| WAREHOUSE* | TODAY'S HOMES* |
| RONA* | THE BRICK* |
| SOBEYS* | MICHAELS* |
| BULK BARN* | ORIENTAL FOOD MART* |
| HOME OUTFITTERS* | REXALL* |
| T&I SUPERMARKET* | BEST BUY* |
| PIZZA HUT* | SPORT CHEK* |
| BOUCLAIR* | |

No one delivers results like we do!
To find out more about how to reach your target market
and get the same great response from your
flyer distributions as these customers, call us today!
*Selected areas only

Sun-Tribune
visit flyerland.ca

905-294-2200

New hospital wing opens 'on time, on budget'

BY AMANDA PERSICO
apersico@yrmg.com

The provincial health minister gave two thumbs up to the new wing at Markham Stouffville Hospital yesterday.

Health and Long Term-Care Minister, Deb Matthews, along with Unionville MPP Michael Chan and Oak Ridges-Markham MPP Helena Jaczek toured the new 385,000-square-foot facility that welcomed patients for the first time yesterday.

"I'm extremely proud to see the hospital's redevelopment project being delivered on time and on budget," Ms Matthews said.

The development of the new building has been a priority, Ms Jaczek said.

"Since before I was elected and up until this project was announced, this new capital expansion was a top priority for me and my constituents," she said. "I am so happy to witness first hand the opening of this state-of-the-art facility and to recognize the important role this site will play in the lives of families in our communities moving forward."

The hospital moved 124 patients Sunday from the existing building, referred to as Building A, to the new wing, or Building B.

"The move was a tremendous success," hospital president and CEO Janet Beed said. "We planned for every situation and every contingency and the move proceeded exactly as planned."

Patients were moved from a number of departments, including maternal child, pediatrics, surgery, neonatal intensive care unit, critical care and inpatient mental health moved into their new rooms.

The emergency and diagnostic imaging departments were also relocated.

The hospital's emergency heliport was also relocated to the roof of the new building. Air ambulance pilots performed a test flight and landing at the new helipad Monday, which allowed Ornge paramedics an opportunity to familiarize themselves with the new location.

The move was just the beginning of the hospital's multi-year expansion plan and renovations have already started on Building A and are expected to be complete by August 2014.

Renovations include adding more sinks and toilets in rooms as well as adding computer alcoves and larger drug distribution areas.

"The building is about 23 years old," Ms Beed said. "The approach to technology and medicine was differ-



STAFF PHOTO/SJOERD WITTEVEEN

Ontario Deputy Premier Deb Matthews meets little Luca David Collura, soon to reside in Stouffville with his proud parents Christina and Carlo, in the new wing at the Markham Stouffville Hospital yesterday. Go to yorkregion.com to see more photographs from opening day.

ent then."

The former emergency room will also be transformed into an oncology centre that will overlook a garden.

The hospital will also implement a

new food and dietary system that will improve and streamline the patient meal program. The plan is to allow for personal and customizable meal plans for patients.

WagJag Deals of the Day!

Brought to you by:

Sun-Tribune **yrmg**

WAGJAG.COM/GOLF

18 Holes of Golf for
2 Plus 2 Hot Dogs
at Bowmanville Golf
and Country Club



66% DISCOUNT
BUY FOR \$38

DEAL ENDS MARCH 19

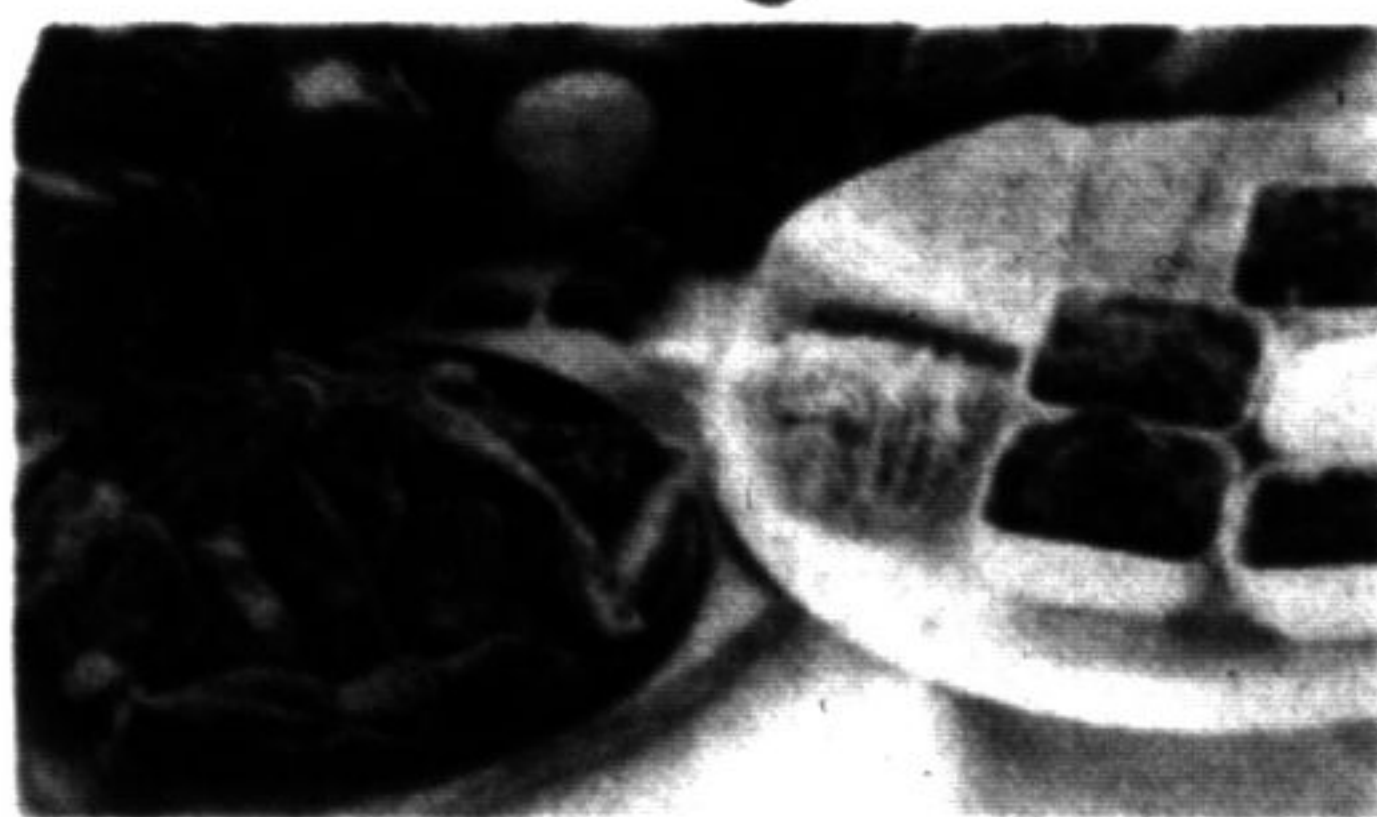
30 Bottles of Premium
Make-It-Yourself Wine
including Corks, Shrinks
and Labels at Vin Bon
Choose from 4 Locations



52% DISCOUNT
BUY FOR \$59

DEAL ENDS MARCH 21

\$20 towards
Authentic Mexican
Cuisine at Mexican
Amigos



50% DISCOUNT
BUY FOR \$10

DEAL ENDS MARCH 16

Day Pass to Wild
Water Kingdom
Valid Any Day
in June 2013



55% DISCOUNT
BUY FOR \$14.50

To advertise call one of our Metroland Sales Representatives at 905-727-0819 ext 389