

# TOWN OF WHITCHURCH-STOUFFVILLE

Customer Service Centres:  
905-640-1900 or 1-855-642-TOWN (0696)  
Automated Lines:  
905-640-1910 or 1-855-642-TOWS (0697)

111 Sandiford Drive, Stouffville, Ontario L4A 0Z8

www.townofws.ca

## NOTICE OF COUNCIL MEETINGS



Council Chambers • 111 Sandiford Drive

**JANUARY 14, 2013**  
**SPECIAL COUNCIL MEETING – 7:00 P.M.**

**JANUARY 22, 2013**  
**SPECIAL BUDGET & AUDIT COMMITTEE – 2:00 P.M.**  
2013 Capital Forecasts

**JANUARY 22, 2013**  
**COUNCIL MEETING – 7:00 P.M.**

**JANUARY 29, 2013 meeting**  
**SPECIAL COUNCIL MEETING – 9:00 A.M.**  
Growth Management Study and  
In Camera for a matter of Labour Relations

The agendas for these meetings will be available for review at the Municipal Offices, Whitchurch-Stouffville Public Library and on the Town's website at noon the Thursday prior to the meeting.  
Complete Schedule of Council Meetings available on the Town website.

## NOTICES

**SPECIAL COUNCIL MEETING**  
**Monday January 14th, 2013 7:00 pm**  
**Council Chambers, Municipal Offices**

Council will be convening a Special Council Meeting on **Monday, January 14th, 2013 at 7:00 p.m.** to hear three Delegations who are seeking the endorsement of the Town in

## NOTICES CONT'D

support of their respective solar panel green energy projects under the Feed-in-Tariff version Two program.

The three projects are located at the following sites:  
169 Ram Forest Road  
16341 Woodbine Avenue  
223 Millard Street  
(St. Brigid Catholic Elementary School)

## PROPOSED SKATE PARK AT MEMORIAL PARK INTRODUCTORY COMMUNITY INFORMATION MEETING

Tuesday January 15th, 2013 7:00 pm

Council Chambers, Municipal Offices

Your participation in this important Community based project is requested ...

Staff from the Planning & Building Services and Leisure & Community Services Departments, in consultation with the Mayor's Office, are hosting an Introductory Community Information Meeting to kick off the design of the new Skate Park. The Skate Park is proposed to be constructed in Memorial Park in 2013 to the south of the Whitchurch-Stouffville Public Library / Leisure Centre adjacent Park Drive. The Skate Park project represents the first phase of development arising from Town Council's adoption in principal of the update to the Memorial Park Master Plan.

The purpose of this introductory Meeting is to review the project outline and timetable, and, to initiate the

## NOTICES CONT'D

process of seeking comments from interested members of the Community on the design elements which could be incorporated into the future Skate Park. The information exchanged at this meeting will assist in creating initial design concepts / principles for the Skate Park.

The Youth of the Town are especially encouraged to attend this Meeting to provide your comments on this important Community based project.

For further information, please contact Andrew McNeely, Director of Planning & Building Services, at ext. 2270 or via email at [andrew.mcneely@townofws.ca](mailto:andrew.mcneely@townofws.ca)

## NOTICE OF PUBLIC INFORMATION CENTRE The Ballantrae – Musselman Lake and Environs Secondary Plan / Highway 48 Corridor Review Final Consultant Reports

Wednesday January 16th, 2013 6:30 p.m. to 9:00 p.m.

Council Chambers, Municipal Offices

For more information, see our website.

## NOTICE OF STUDY COMMENCEMENT

The Town has initiated a Schedule "B" Class Environmental Assessment to review and evaluate the extension of sanitary sewer Sub-Trunk #1 to service lands east of the Tenth Line and north of Main Street in the Community of Stouffville. Watermain system extensions will also be considered where appropriate to extend servicing or improve circulation in the water distribution system. See [www.townofws.ca](http://www.townofws.ca) for more information.

## What's On in Whitchurch-Stouffville

### Leisure & Community Services

905-642-PLAY (7529) [leisure\\_services@townofws.ca](mailto:leisure_services@townofws.ca)

#### UPCOMING FIRST AID COURSES:

**Emergency First Aid Course**  
January 26, 11:30 – 7:30 pm  
barcode 18536



**Standard First Aid Course**  
January 26 – 27, 11:30 – 7:30 pm  
barcode 18550

Register online or at the Leisure Centre

#### WINTER PROGRAM REGISTRATION

Limited space still available  
Register in person at the Leisure Centre  
Course listing online.

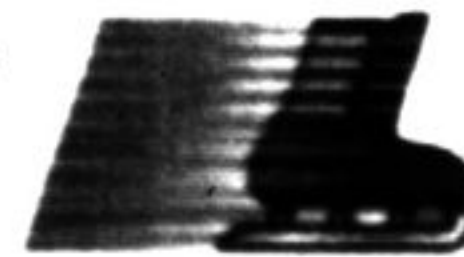
#### PA DAY ACTIVITIES

Friday February 1, 2013

**Public Swimming**  
Leisure Centre  
1:30 – 3:30pm (admittance policy applies)



**Public Skating and Shinny**  
Stouffville Arena  
1:00 – 3:00pm



#### SPRING SUMMER LEISURE GUIDE

Available February 7, 2013.

Contact us now to place an ad  
[micole.ongman@townofws.ca](mailto:micole.ongman@townofws.ca) or  
905-640-1910 x 2323

### Museum

905-727-8954 or 1-888-290-0337 [wsmuseum@townofws.ca](mailto:wsmuseum@townofws.ca)

#### HISTORY HANDS-ON (H2O) IN WINTER

Saturday, January 26th, 2013  
12:00 pm – 4:00 pm

Practice knitting and corking in the Brown House parlour; learn how candles were made in the Log Cabin. Do you know what a megalithoscope is? Come find out! Help cook treats on the wood stove in the Brown House kitchen. Experience what life was like when this area was first settled! A great family event!  
Regular admission applies.



#### P.A. DAY CHILDREN'S WORKSHOP

Friday, February 1st, 2013  
9:00 am – 4:00 pm

Drop your kids off with us at the Museum for the P.A. Day! Your kids will spend the day learning 'how things were done' in Whitchurch-Stouffville over 100 years ago! They will try out an old-fashioned soup recipe, bake in the Victorian kitchen, spend time in the pioneer classroom and much more! This workshop is perfect for children aged 8-12!

Pre-registration is required and participants must bring their own nut-free lunch.  
Cost: \$40.00 (\$32.00 for Museum members)



#### MEMBERSHIP PRICES

Individual	\$17.50	Family	\$42.00
Dual	\$35.00	Youth (under 18)	\$10.00

Now's the time...  
buy your 2013 membership now!

### Library

905-642-READ (7323) or 1-888-603-4292 [www.whitchurch.library.on.ca](http://www.whitchurch.library.on.ca)

#### AUTHOR VISIT: MARK KOZAK HOLLAND

Thursday, January 17 7:00 pm  
The author of *Project Management Blunders* will share management tips using *The Titanic* as a case study. Pre-register in person at the Library or online at <https://www.surveymonkey.com/s/GTBWZY>



#### PA DAY MOVIE @ YOUR LIBRARY

Friday, January 18 1:30 pm  
"The Dark Knight Rises"  
Eight years on, a new terrorist leader, Bane, overwhelms Gotham's finest, and the Dark Knight resurfaces to protect a city that has branded him an enemy. Free Admission. Rated PG-13.



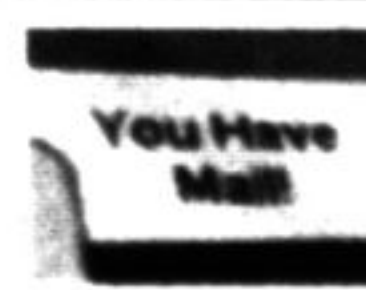
#### AUTHOR VISIT: KEITH RICHARDS

Thursday, January 24 7:00 pm  
The author of *Sideways: Using the Power of Technical Analysis to Profit in Uncertain Times* will show investors how to limit risk and earn predictable returns in the current volatile markets. Free Admission.



#### PRESENTATION FOR PARENTS: "INTERNET SAFETY & PRIVACY"

Speaker: **Claudia Popa**  
Thursday, January 31 7:00-8:00 pm  
Claudia Popa is a security and privacy risk advisor and President & CEO of Informatica Corp.  
Free Admission. Pre-registration is required.  
Register in person at the Library or online at [Register@KnowledgeFlow.ca](http://Register@KnowledgeFlow.ca)



#### LIBRARY WEB SITE DEMO

Thursday, January 10 7:00-8:00 pm  
Topics include downloading e-books and audio books, renewing or reserving from home, electronic booklists, researching health issues, etc.  
Free. Pre-registration is required.



#### EVENING BOOK CLUB @ YOUR LIBRARY

Third Thursday of the month 7:00-8:40 pm  
Call the Library for details or to register.



### Latcham Gallery

905-640-8954 [www.latchamgallery.ca](http://www.latchamgallery.ca)

#### UPCOMING EXHIBITION: Jacquelin Heichert: *The Matrix of Choice*

January 12 - February 16  
Opening reception: January 12, 1 – 3 p.m.  
Stouffville raised, Montreal artist works with sculpture and print media.



Hours: Tuesday to Saturday 10 am to 5 pm  
Email: [info@latchamgallery.ca](mailto:info@latchamgallery.ca)

#### WINTER ART CLASSES & CAMPS

**Budding Artists (ages 6-11: AM or ages 4-8: PM)**  
Saturdays, January 12 – March 2, 9:30-11:30 a.m. and 1 – 3 p.m.

**Art Jam: Youth Art Classes (ages 10-16)**  
Thursdays, January 17 – March 7, 4 – 6 p.m.

**P.A. Day Art Workshops (ages 4-10)**  
January 18: 9 a.m. – 4 p.m.  
February 1: 9 a.m. – 4 p.m.

**Life Drawing (adults 18+)**  
Tuesdays, January 8 - March 12, 7:00 – 9:30 p.m.

Visit [www.latchamgallery.ca](http://www.latchamgallery.ca) for details  
Call 905-640-8954 or drop by the Gallery to register.