

# TOWN OF WHITCHURCH-STOUFFVILLE

Customer Service Centre:

905-640-1900 or 1-855-642-TOWN (8696)

Automated Lines:

905-640-1910 or 1-855-642-TOWS (8697)

111 Sandiford Drive, Stouffville, Ontario L4A 0Z8

www.townofws.ca

## NOTICE OF COUNCIL MEETINGS



Council Chambers • 111 Sandiford Drive

### DECEMBER 4, 2012

SPECIAL COUNCIL IN CAMERA MEETING 2:00 p.m.  
(Labour Relations)

COUNCIL MEETING 7:00 p.m.

### DECEMBER 11, 2012

SPECIAL COUNCIL BUDGET & AUDIT COMMITTEE MEETING  
9:00 a.m.

### DECEMBER 18, 2012

COUNCIL MEETING 3:00 p.m.

The agendas for these meetings will be available for review at the Municipal Offices, Whitchurch-Stouffville Public Library and on the Town's website at noon the Thursday prior to the meeting.

Complete Schedule of Council Meetings available on the Town website.

## NOTICES

Council of the Town of Whitchurch-Stouffville will consider the following reports and by-laws at the respective meetings in the Council Chambers at 111 Sandiford Drive, Stouffville:

### December 4, 2012 at 7:00 p.m.:

- Consolidation of the Business licensing by-laws;
- Amend the Taxi by-law;
- Amend the Horse Riding Establishment licensing by-law to a regulatory by-law
- Repeal by-laws that regulate, license and govern Driving Instructors, Eating Establishments, Limousines and Public Garages.

## NOTICES CONT'D

Contact Licensing and Public Services Coordinator at ext 2225 or colleen.clarke@townofws.ca

**December 18, 2012 at 3:00 p.m.:** The proposed 2013 User Fees. Director of Finance/Treasurer at ext. 2245 or marc.pourvahidi@townofws.ca

### WATER BILLS DUE DATE - DECEMBER 7, 2012

WATER bills have now been mailed. Failure to receive a water bill does not eliminate the responsibility for payment of water or the penalty charge for late payment. Contact our Customer Service Centre if you have not received your water bill or if you have any inquiries.

PAYMENTS may be made by mail, at most Financial Institutions, banking machines, by telephone and internet or at the Customer Service Centre. After hours, there is a drop box at the main entrance of the Municipal Offices.

**PLEASE NOTE: The Town will no longer accept credit cards for payment of your water accounts.**

### PUBLIC INFORMATION SESSION WITH MPAC RE: 2012 NOTICE OF ASSESSMENT

Council Chambers

Thursday, November 29, 2012 6:30 p.m. to 8:30 p.m.

All residents are invited to a Public Information Session with MPAC (Municipal Property Assessment Corporation). This session will focus on the 2012 Notice of Assessments, which were mailed to all Residential and Farm property owners in the Town of Whitchurch-Stouffville late September, 2012. See our website for details.

## NOTICES CONT'D

### HYDRANT USE IN WHITCHURCH-STOUFFVILLE

Only authorized water haulers are permitted to take water from a hydrant through our Hydrant Permitting Program. Every year thousands of litres of water are taken illegally from hydrants increasing water system costs and threatening water quality. To find out if a company is complying, please record the company name, vehicle license plate number and approximate location of the hydrant and report this information to our Customer Service Centre. Thank you for your assistance in this matter.

### DATE CHANGE FOR LIBRARY BOARD MEETING

The next Library Board meeting has been rescheduled to Monday, December 3 at 7:00 p.m. at the Library.

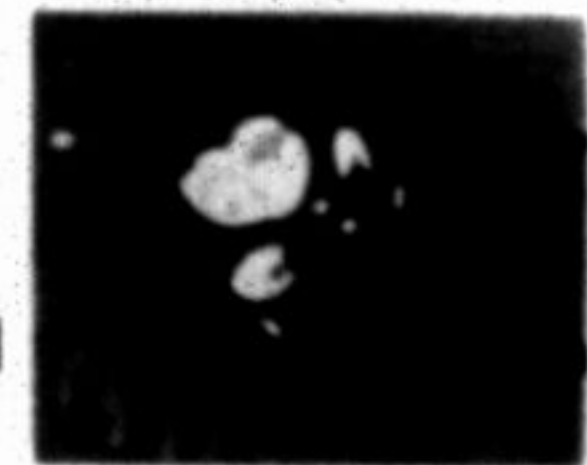
### NO OVERNIGHT PARKING December 1 to March 31 inclusive

Parking rules ensure that our streets are clear to accommodate traffic flow, emergency vehicles and snowplows. **Parking is prohibited on Town streets between 2:00 a.m. and 6:00 a.m.** Vehicles parked on the street during this period will receive a fine of \$50.00.

## UPCOMING EVENTS

### SANTA CLAUS PARADE SATURDAY DECEMBER 1, 2012 2:00 p.m. to 4:00 p.m.

Tenth Line from North Street to Main Street  
Main Street from Tenth Line to Weldon Road  
Weldon Road to Hoover Park



# What's On in Whitchurch-Stouffville

# WOWS WOWS WOWS WOWS

## Leisure & Community Services

### HOLIDAY FITNESS SPECIALS

December 1 - 24

One Month Fitness \$50.00\*

One Month Fitness Plus \$60.00\*

Annual memberships 13 months for the price of 12.

Visit the Leisure Centre

30 Burkholder Street

905-642-7529

\*HST included



### WINTER REGISTRATION BEGINS:

Residents online

6:00 p.m., November 27, 2012

In person/mail/fax/drop off

November 29, 2012 (6:00 a.m.)

Non-Residents: 6:00 p.m., December 4, 2012

Check out what will be offered online at [www.townofws.ca/leisureguide](http://www.townofws.ca/leisureguide) or pick up your copy of the Leisure Guide at the Leisure Centre or Municipal Offices.

### SPRING/ SUMMER 2013 LEISURE GUIDE

Take out an ad or submit your community event

Now is the time to contact us.

[Leisure.services@townofws.ca](mailto:Leisure.services@townofws.ca) or 905-642-PLAY (7529)

## Museum

### A CANDLELIGHT CHRISTMAS

Saturday, December 8th

6:30 and 8:00 pm

Join our costumed staff on this enchanting evening tour! Explore the development of Christmas traditions while sampling 19th-century foods, entertainment, and decorations in our Pioneer Log Cabin and Victorian Farmhouse. Enjoy a horse-drawn wagon ride and then warm up with hot apple cider, traditional baking, and maybe even some Christmas carols. Due to limited space, advance ticket purchase is required.

Adults: \$15.00, Children: \$10.00



### HOLIDAY HAPPENINGS

#### WORKSHOP FOR CHILDREN

Saturday, December 1st, 2012

9:30am - 12:30pm

Children ages 8-12 will participate in an assortment of hands-on crafts and heritage cooking appropriate for the season. They'll tour the heritage buildings and play some old fashioned games. This provides parents with a wonderful 'kid-free' 3 hour window in which to prepare for the holidays! Pre registration required. The cost is \$15 per child (Member's rate \$12) - includes all materials and snacks!



**THANK YOU** to all that joined us for the 32nd Annual Victorian Tea.

It was a pleasure hosting this event for you in the new facility. See you again next year!

## Library

### INTERESTED IN CHESS?

Adult volunteer needed to assist with after-school chess club.

**Mondays 4:00-5:00 January - June 2013**

Call the Library for more information or to volunteer.

### RED CROSS BABYSITTING COURSE

Saturday, December 1

9:45-4:45 pm

Age 11+

Cost \$55. Pre-registration is required!



CANADIAN RED CROSS

### SENIORS' CHRISTMAS PARTY

Wednesday, December 12 10:00-11:30 am

Treats and Music with the choir from Stouffville District Secondary School. Free Admission.



### EVENING BOOK CLUB @ YOUR LIBRARY

Third Thursday of the month 7:00-8:30 pm

Call the Library for details or to register.

### CHECK OUT A Pedometer

Take a step towards better health. Track your steps and make walking a regular part of your day!



### HEAR US ON WHISTLE RADIO

CIWS, 102.7 FM

Catch Shelf Life -

Tuesday at 5:30 pm and Thursday at 8:30 am

Library news about services & programs

Hear a short interview, book talk, or reading on

Sunday evenings at 5:30 pm



## Latcham Gallery

### CURRENT EXHIBITION:

**Made to Measure: and more ideas on space**

November 3 - December 8, 2012

A solo exhibition of sculpture and hand-cut drawings by Hamilton-based artist Andrea Carvalho.

### WINTER ART CLASSES & CAMPS

For children, youth and adults  
Visit [www.latchamgallery.ca](http://www.latchamgallery.ca) for details

### WINTER BREAK ART CAMP DAYS (4-10 YRS)

January 2, 3, 4: Full day program 9 - 4  
Sign up for one day or all 3!

Visit [www.latchamgallery.ca](http://www.latchamgallery.ca) for details  
Call 905-640-8954 or drop by the Gallery to register.

### UPCOMING EXHIBITION:

**IMAGES 2012/2013: Altitude**

December 13 - January 5

Opening reception: December 13, 7 - 9 p.m.

An exhibition of art by the graduating art class of Stouffville District Secondary School



Hours: Tuesday to Saturday 10 am to 5 pm  
Email: [info@latchamgallery.ca](mailto:info@latchamgallery.ca)