

# Count On Toro To Deliver

# TORO

www.toro.ca



**Toro's Best Seller**

## Recycler, Personal Pace DOOR CRASHING SALE!!!! \$399

- Best-in-class warranties
- Features "Quick Wash" washout port
- Powered by Briggs & Stratton with ReadyStart™
- Powerful Engines
- Superior mulching performance

Super Recycler with Personal Pace  
Prices Starting at \$599  
with 5 Year Warranty!!!

**Own the Best**

- Best-in-class warranties
- Durable cast aluminum deck
- Personal Pace® - adjusts to your speed
- Toro's best mulching mower



**Get More Now with Financing**

TimeCutter SS zero-turn mowers  
Prices Starting at  
\$2599.95

- 3-in-1 cutting system
- Automatic braking system
- Exclusive Smart Speed Control
- Powerful Kohler or Kawasaki engines



Available at Markham Mower, nothing leaves here in a box. Family owned & operated since 1972

## Markham Mower Ltd.

135 Anderson Ave  
Markham, ON L6E 1A4  
905-294-2644



See dealer or toro.com for details on Canadian residents' 5 year warranty. \*MSRP. Price & availability subject to change without notice. ©2012 Toro Mower Co.

**GOVERNMENT:** Buildings could be declared surplus

# Stouffville Lions OK with town taking over hall

BY SANDRA BOLAN  
sbolan@yrmg.com

The Town of Whitchurch-Stouffville's need to utilize Latcham Hall for leisure programming "has now reached a critical point", according to a report to town council last week.

As such, during last week's meeting, town council approved the reclassification of the hall. Its daily operations will be overseen by the town's leisure services department effective July 1.

For the past number of years, the Park Drive facility has been operated by the Stouffville Lions Club.

"The Lions Club is agreeable to this change and can utilize the facility should they wish to do so, similar to the Ballantrae Lions Club who use the Ballantrae Community Centre without direct facility operation," wrote Rob Raycroft, director of leisure and community services for the town in a council report.

The shift is part of the town's plan to meet the increased demand for programming space by either re-purposing some of its facilities or declaring some surplus if found to not be conducive to its needs, according to the report.

Latcham Hall was deemed a facility that could be re-purposed in a December 2011 report to council.

Upgrades to the kitchen, washrooms and main hall areas have been budgeted for this year at \$225,000, according to the report.

*Upgrades to Latcham Hall's kitchen, washrooms and main hall areas have been budgeted for this year at \$225,000*

The facility is expected to be "off-line for a period of time in 2012 due to the planned renovations" but no indication was provided in the report or during the council meeting regarding when this would take place and how long it would take.

Other facilities owned by the municipality but operated in partnership with a third party are the Lemonville Community Centre, Silver Jubilee Club, Lebovic Centre for Arts and Entertainment - Nineteen on the Park, Stouffville Lawn Bowling Club and the Main Street train station, which is leased from Metrolinx.

## Brighten your smile with Perla Dental

perla  
dental

**NOW OPEN  
IN STOUFFVILLE**

### Family & Cosmetic Dentistry

Perla Dental is your first line of defense  
in total oral health care.

- General Dentistry
- Prevention
- Cosmetic
- Conscious Sedation
- Orthodontics Invisalign
- Sleep Apnea Treatments

Comfortable dental care your  
WHOLE FAMILY can smile about.



Relaxed atmosphere

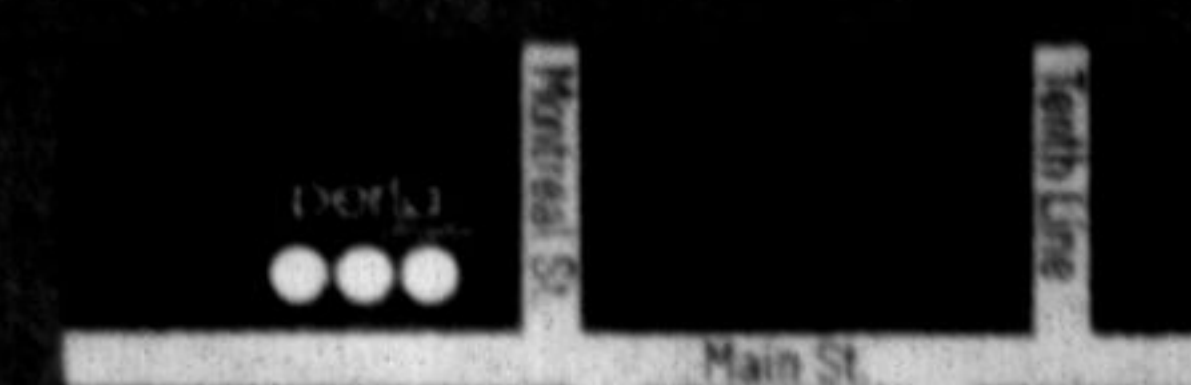
Enjoy our heated and massage dental chairs. Listen to music or watch TV while we look after your smile

Call or visit us today

8068 Main Street, Stouffville

905.591.6668 www.perladental.ca

Evening and weekend appointments available.



LIMITED TIME OFFER  
Book before July 31, 2012 and receive  
**FREE Whitening**  
with your first exam, x ray & cleaning

Source code: 100