

# your PLANNER

MONDAY  
NOVEMBER

28

**SIGN IN**

The Silver Jubilee + 55 Club hosts a luncheon beginning at noon. Tickets \$8. Entertainment by handwriting analyst Elaine Charal. All seniors welcome.

FRIDAY  
DECEMBER

2

**LIGHT UP**

The Festival of Lights walking tour starts from the train station at 7 p.m., goes to the Care and Share, the gazebo and Nineteen on the Park for the lighting of trees. Call 905-640-0749.

SATURDAY  
DECEMBER

3

**DINE WITH CLAU**

Christ Church Stouffville on Sunset Blvd. hosts breakfast with Santa from 9 to 11 a.m. Tickets are \$5 from the church office. Call 905-640-1461

SATURDAY  
DECEMBER

3

**SANTA ON PARADE**

The Kinsmen Santa Claus Parade starts at 2 p.m. from Tenth Line and Aintree Drive, goes south to Main Street where it heads west to Mostar Street. Call 416-845-0579.

SUNDAY  
DECEMBER

4

**SPIRITED RETURN**

The Stouffville Spirit plays its first home game in two weeks against Orangeville at 2:30 p.m. at the Stouffville Arena. Go to [stouffvillespirit.com](http://stouffvillespirit.com)

MONDAY  
DECEMBER

5

**DOLLAR DINNER**

A \$1 Community Spaghetti Dinner is on from 5 to 7 p.m. at Latham Hall, 8 Park Drive. For more information, e-mail [stouffvillecommunitydinner@gmail.com](mailto:stouffvillecommunitydinner@gmail.com)

More Christmas concerts and events/pages 22 and 23.

For more community events, visit [yorkregion.com](http://yorkregion.com) and click on POP, personal online planner.

To add an event to this listing, e-mail Jim Mason at [jmason@yrmg.com](mailto:jmason@yrmg.com). Event organizers can also register with POP at [yorkregion.com](http://yorkregion.com) to have events listed free online.

## BREAKING STOUFFVILLE NEWS

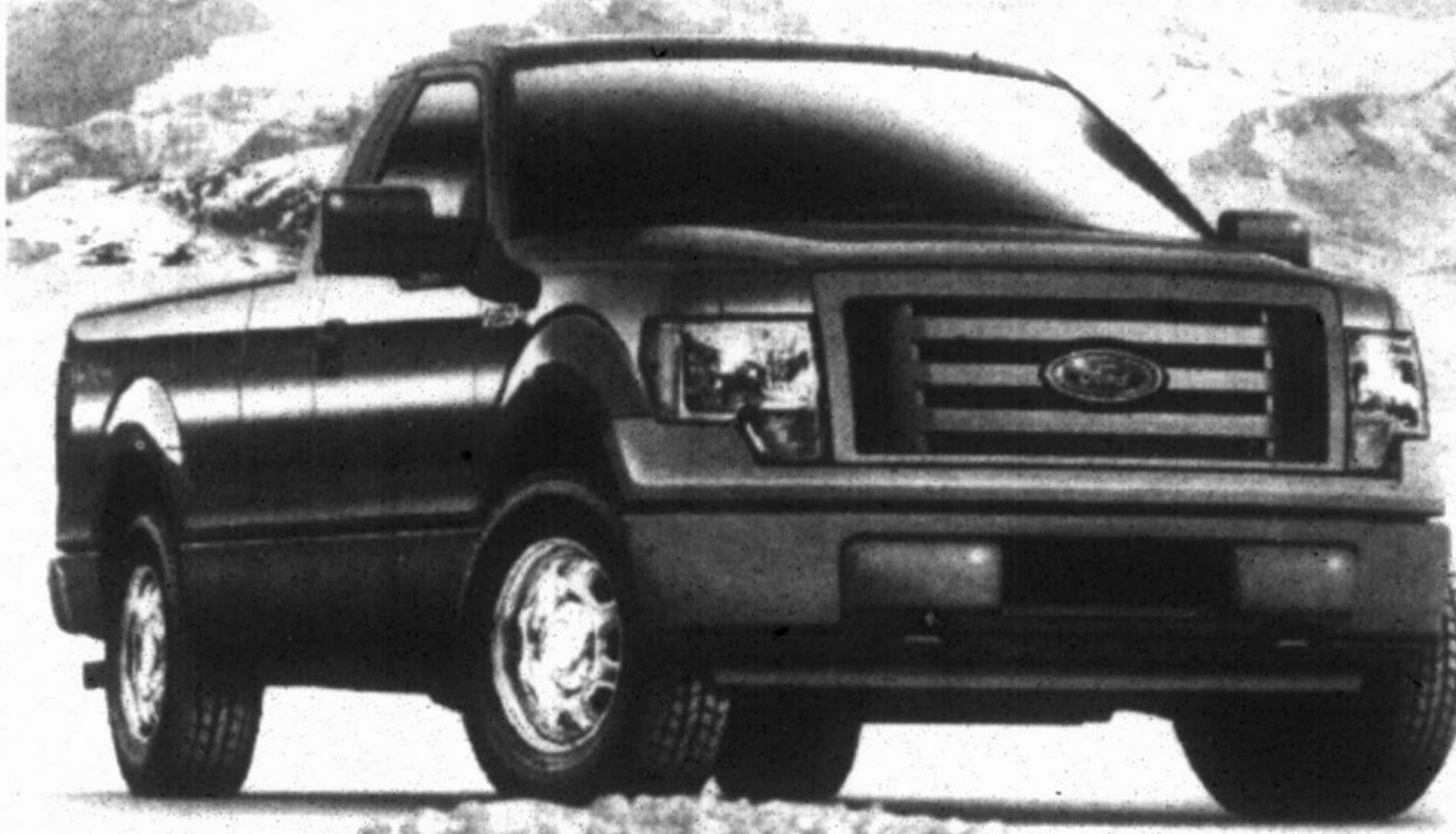
[yorkregion.com](http://yorkregion.com)  
it clicks home

*[Vertical text on the left side of the page, partially obscured and difficult to read. It appears to be a list of names or a directory.]*

HURRY, IT ENDS NOVEMBER 30<sup>TH</sup>, 2011

# TACKLE OLD MAN WINTER HEAD ON.

GET WINTER READY WITH SAFETY FEATURES LIKE TRACTION CONTROL, AVAILABLE 4X4, AND TRAILER SWAY CONTROL.



2011 F-150 REGULAR CAB XL  
STARTING FROM  
**\$19,999\***  
INCLUDES \$1,500 MANUFACTURER REBATE.  
OFFER EXCLUDES TAXES.

4x4 AVAILABLE 4x4 TRACTION CONTROL ELECTRONIC STABILITY CONTROL  
**Best in Class Fuel Economy**  
(non hybrid models)

NOW IT'S EASY TO OWN WINTER WITH GREAT OFFERS LIKE

**\$10,000\*\***  
UP TO IN MANUFACTURER REBATES  
2011 SUPER DUTY DIESEL AMOUNT SHOWN

RECYCLE YOUR RIDE IS BACK FOR A LIMITED TIME.  
FORD LETS YOU RECYCLE YOUR 2005 OR OLDER VEHICLE & GET UP TO **\$3,000\*** TOWARDS MOST NEW FORD VEHICLES.  
THIS OFFER IS IN ADDITION TO INCENTIVES CURRENTLY OFFERED ON QUALIFYING VEHICLES OF MODEL YEAR 2005 OR OLDER. INCENTIVES RANGE FROM \$500 TO \$3000. VISIT [www.ford.ca](http://www.ford.ca) FOR DETAILS.

### 2011 F-150 SUPER CAB XLT 4X2



PURCHASE FOR ONLY  
**\$199@4.99%** APR  
FINANCED BI-WEEKLY OVER 72 MONTHS WITH \$0 DOWN.  
INCLUDES \$7,500 MANUFACTURER REBATE

4x4 AVAILABLE 4x4 TRACTION CONTROL ELECTRONIC STABILITY CONTROL  
**Best in Class Fuel Economy**  
(non hybrid models)

OR  
STEP UP TO AN F-150 SUPER CAB XLT 4X4 FOR \$291\* MORE BI-WEEKLY. OFFERS EXCLUDE TAXES

PLUS  
ELIGIBLE CUSTOMERS GET \$2,500 IN RECYCLE YOUR RIDE INCENTIVES

### 2011 F-150 SUPER CREW XLT 4X2



PURCHASE FOR ONLY  
**\$212@4.99%** APR  
FINANCED BI-WEEKLY OVER 72 MONTHS WITH \$0 DOWN.  
INCLUDES \$7,500 MANUFACTURER REBATE

4x4 AVAILABLE 4x4 TRACTION CONTROL ELECTRONIC STABILITY CONTROL  
**Best in Class Fuel Economy**  
(non hybrid models)

OR  
STEP UP TO AN F-150 SUPER CREW XLT 4X4 FOR \$301\* MORE BI-WEEKLY. OFFERS EXCLUDE TAXES

PLUS  
ELIGIBLE CUSTOMERS GET \$2,500 IN RECYCLE YOUR RIDE INCENTIVES

\*Our advertised prices exclude freight, Air Tax, PPSA and the Stewardship Ontario Environmental Fee. Add dealer administration and registration fees of up to \$799, fuel fill charge of up to \$100, and applicable taxes. Offer ends 11/30/11.

SIRIUS SATELLITE RADIO Available in most new Ford vehicles with 5-year pre-paid subscription.



Drive one  
[ontarioford.ca](http://ontarioford.ca)

Hurry, winter's coming. Visit your Ontario Ford Store today.