

# Pill bottle links vehicle break-ins

BY SANDRA BOLAN  
sbolan@yrmg.com

A Stouffville man is charged with possession of stolen property, trespass by night, theft under \$5,000 and breach of probation in connection with two vehicle break-and-enters.

The 44-year-old man was arrested Nov. 12 after York Regional Police responded to a theft-in-progress call in the area of Bethesda and McCowan roads.

A laptop and about \$20 cash was

## CRIME BRIEFS

missing from a vehicle.

The items were recovered.

Following the arrest, officers searched the accused's vehicle and found a prescription medication bottle in the name of a woman.

Officers went to her home,

which was in the Bethesda Road and Woodbine Avenue area, and learned the medication was missing from her car.

Between Nov. 12 and 13, a purse containing personal identification was stolen from a vehicle in the Hwy. 48 and Bethesda Road area.

There are no suspects in this incident, according to York Regional Police.

Check for crime in your neighbourhood on the York Regional Police map at [www.yrp.ca](http://www.yrp.ca)

# BREAKING STOUFFVILLE NEWS

**yorkregion.com**  
it clicks home

5, Stouffville Sun-Tribune ■ [www.yorkregion.com](http://www.yorkregion.com) ■ Thursday, Nov. 24, 2011

## What's On in Whitchurch-Stouffville



**TOWN OF WHITCHURCH-STOUFFVILLE**

### Leisure

Email: [leisure.services@townofws.ca](mailto:leisure.services@townofws.ca)  
Customer Service Phone: 905-642-PLAY (7529)

#### MOVIE NIGHT

Title TBA  
Friday December 9, 7pm  
Nineteen on the Park

#### YOUTH SURVEY EXTENDED

Have your say on programs and services for youth  
Complete the survey online at [www.townofws.ca/youth](http://www.townofws.ca/youth)  
Chance to win iTunes gift cards

The support of the Government of Ontario is acknowledged

#### PA DAY ACTIVITIES Friday November 25

Swimming 1:30 - 3:30pm  
Skating Stouffville Arena, 1 - 3pm

#### HOLIDAYS SPECIAL

Leisure Centre Fitness Club ~ One month: \$55  
One month with fitness/aquafit classes: \$66  
One month free on annual memberships  
All membership include use of the pool  
Gift cards available

#### WINTER PROGRAM REGISTRATION BEGINS:

Online: November 29, 6pm (residents only)  
In Person: December 1  
Non-Resident December 6, 6pm  
Register online or in person at the Leisure Centre

### Museum



14732 Woodbine Avenue, Gormley  
Phone: 905-727-8954 or 1-888-290-0337

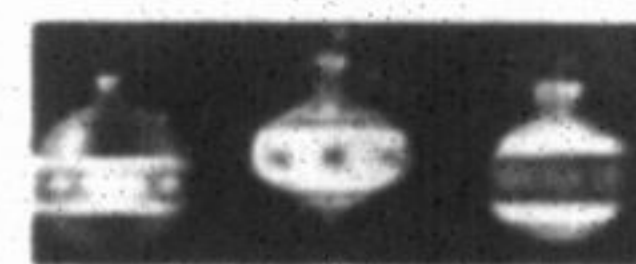
#### 31st ANNUAL VICTORIAN TEA AND A CANDLELIGHT CHRISTMAS

WE ARE VERY DISAPPOINTED BUT THESE EVENTS MUST BE CANCELLED

Because of delays incurred during the ongoing construction project for the new Whitchurch-Stouffville Museum & Community Centre, we regret that it is necessary for the Museum to cancel its 31st Annual Victorian Tea and A Candlelight Christmas. These events were scheduled to be held Friday, November 25th and Saturday, December 10th in the new building.

Those individuals who have already purchased tickets for this event will have their money refunded.

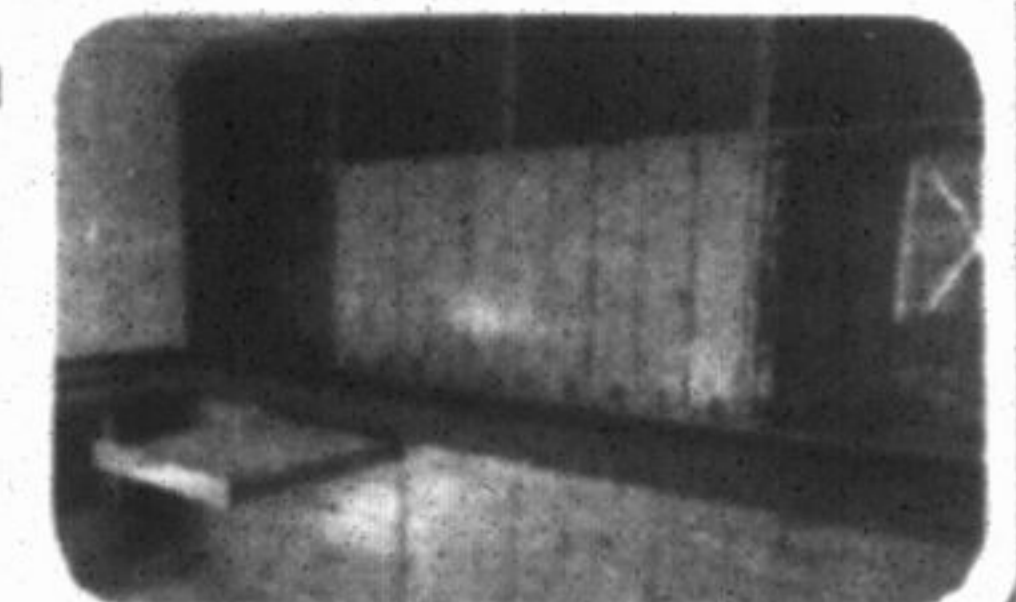
Please see the Museum's website for images of the construction to date: [www.townofws.ca/museum](http://www.townofws.ca/museum).



Doors Open Whitchurch-Stouffville is now accepting volunteer applications for 2012. If you would like to help out as a volunteer for this event next June, please contact us at 905-727-8954 or [wsmuseum@townofws.ca](mailto:wsmuseum@townofws.ca)

#### DISCOVER YOUR NEW MUSEUM

Construction of the new Visitor and Community Centre at the Museum is nearly complete! The building includes new archival and exhibit space, community rooms and the Discovery Room, pictured here. Join us in the New Year in this exciting new community space.



### Library

30 Burkholder Street, Stouffville  
Phone: 905-642-READ (7323) or 1-888-603-4292

#### PA DAY MOVIE

Friday, November 25  
1:30-3:00 pm  
"Spy Kids: All the time in the world in 4D"  
A retired spy is called back into action, and to bond with her new step-children, she invites them along for the adventure to stop the evil Timekeeper from taking over the world.  
Bring your own snacks. Free Admission! Rated PG.

#### RED CROSS BABYSITTING COURSE

Saturday, December 3  
9:45-4:45 pm  
Age 11 +  
Cost \$55  
Pre-registration is required!



**PJ STORY TIME!**  
Tuesdays until December 6  
7:00-7:30 pm  
Ages 3-6 yrs. Wear your PJ's!



#### Seniors Christmas Party

Wednesday, December 7  
10:00-11:30 am  
Treats and Music with the Spartan Sound, the choir from Stouffville District Secondary School. Free Admission.



#### DREAMS: YOUR NIGHTLY HEALER

Thursday, December 8 7:00 pm  
Moderated by Charlene Jones  
Donations are appreciated!



**VOLUNTEERS NEEDED!**  
Library Book Sale Committee  
Willing to donate a few hours a month and need strong arms to carry boxes of books and access to a vehicle to move boxes. If interested, contact Carolyn Nordheimer James at ext. 223

### The Latcham Gallery

6240 Main Street, Stouffville  
905-640-8954 [www.latchamgallery.ca](http://www.latchamgallery.ca)



Hours: Tuesday to Saturday 10 am to 5 pm  
Email: [info@latchamgallery.ca](mailto:info@latchamgallery.ca)

#### Meryl McMaster: Second Self

Now until Dec. 3  
Solo exhibition of photography and sculpture by Ontario based artist Meryl McMaster who is of European and Plains Cree ancestry.



Images 2011/2012: @RT  
December 8, 2011 - January 7, 2012

Artwork by the graduating art students of Stouffville District Secondary School. The students display their work in a range of media including drawing, painting and sculpture.

Opening Reception: Thursday, Dec. 8, 2011, 7pm. Awards will be announced. Everyone is welcome. Refreshments will be served.

#### Winter Break Art Camp Days - coming soon!

Sign up for one, two or all five. Ages 5 to 12.  
Monday, January 2 to Friday, January 6 from 8:30 to 4:30.



Meryl McMaster, Fred, digital chromogenic print

### FROM THE DESK OF THE FIRE CHIEF:

The holiday season is almost upon us. Before you put up your Christmas lights, we would like to remind you that Christmas lights, while pretty, can be a source of fire, if not used safely. Remember to read the manufacturers instructions. Only use lights rated for outdoor use when hanging lights outside. Do not join too many strands together, and always use extension cords rated for outdoor use. Turn lights off when you aren't home, or when going to bed. Or use a timing device. Have a fire safe holiday season.

