




TOWN OF
WHITCHURCH-STOUFFVILLE
celebrating 40 years

111 Sandiford Drive
Stouffville, Ontario L4A 0Z8
Customer Service Centre:
905-640-1900 or 1-855-642-TOWN (8696)

www.townofws.ca

Lebovic Leisure Centre 905-642-PLAY(7529) • Public Library 905-642-READ(7323) • Museum 905-727-8954 OR 1-888-290-0337

NOTICE OF COUNCIL MEETINGS

Council Chamber • 111 Sandiford Drive
 **TUESDAY DECEMBER 6th at 9:30 a.m.**
COUNCIL MEETING
 (Release of the budget)
TUESDAY DECEMBER 13th at 7:00 p.m.
COUNCIL MEETING

NOTICES

STATUTORY NOTICE

At the Council meeting scheduled for December 6, 2011, consideration will be given to the proposed 2012 User Fees. A copy of the proposed fees will be included in the Council Agenda, and will be available for review on December 1, 2011 after 12:00 noon and on the Town website at www.townofws.ca (Council Agendas). Any comments and/or questions can be forwarded to Marc J. Pourvahidi, Director of Finance/Treasurer ext. 2245 or email marc.pourvahidi@townofws.ca

SURPLUS TOWN PROPERTY FOR SALE

5827 Main Street
Commercial Zoning (CM2 [8])

All offers must be received by Noon Friday December 2, 2011.
For further information, contact Chris Paule at ext. 2223 or chris.paule@townofws.ca

**TEMPORARY STREET CLOSURE
SANTA CLAUS PARADE
SATURDAY, DECEMBER 3, 2011**

2:00 p.m. to 4:00 p.m.
Tenth Line from North Street to Main Street
Main Street from Tenth Line to Mostar Street

**TOWN SEEKS
ADVISORY COMMITTEE MEMBERS**

The Town of Whitchurch-Stouffville is seeking volunteers to fill positions within the **Accessibility Advisory Committee** and the **Heritage Advisory Committee**.

Application forms and committee mandates are available at the Municipal Offices, on our website and the Whitchurch-Stouffville Public Library.

**Applications are to be submitted by
Friday December 2, 2011 4:30 p.m.**

RECRUITMENT

The Whitchurch-Stouffville Museum, part of the Department of Leisure & Community Services, is accepting applications for **HISTORICAL INTERPRETERS**, to start January 2012. This position provides seasonal employment based on Museum program bookings and will require working weekdays, and occasional evenings & weekends. For further information, see our website.

Please forward your resume in confidence, identifying position applied for, by December 2nd, 2011 to:

Executive Assistant,
Human Resources Services,
Town of Whitchurch-Stouffville
111 Sandiford Drive, Stouffville, ON L4A 0Z8
Fax: (905) 640-9259 or
Email: hr@townofws.ca

PUBLIC INFORMATION MEETINGS

**UPDATE TO THE MEMORIAL PARK
MASTER PLAN**
Plan Ahead! Plan to Attend!

Memorial Park is one of the Community's jewels. Your input is requested to help plan and design the Community's Park!

Time/Date: **Monday December 5th at 7:00 p.m.**
Location: **Municipal Offices,
Council Chambers
111 Sandiford Drive, Stouffville**

Background information on the update to the Memorial Park Master Plan is also available on the Town's website www.townofws.ca - click on the Memorial Park icon and follow the links.

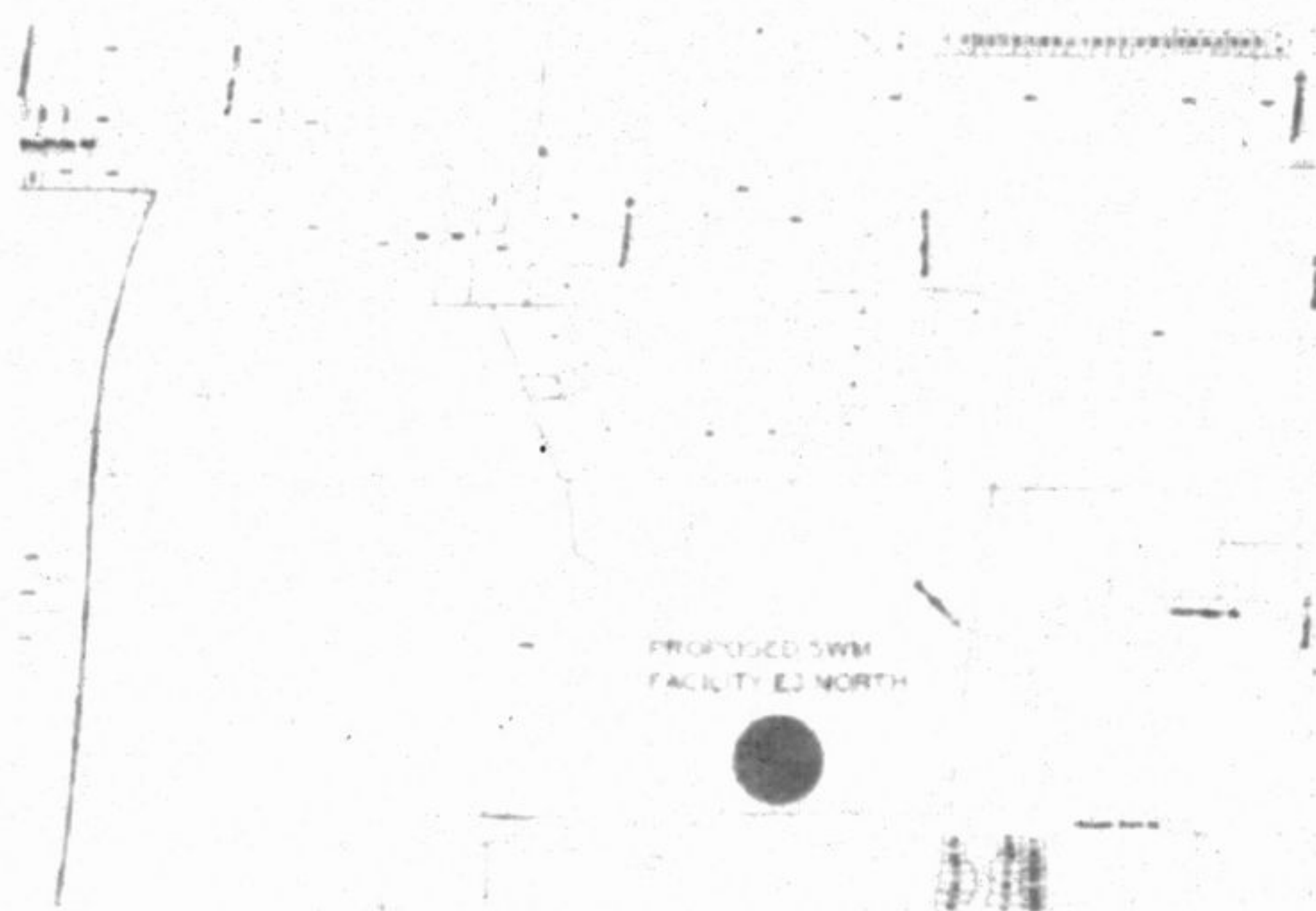
For further information on the Town's program to update the Memorial Park Master Plan, please contact Rob Raycroft, Director of Leisure & Community Services at ext. 2290 or via email at rob.raycroft@townofws.ca.

**PROPOSED CONSTRUCTION
OF STORMWATER MANAGEMENT FACILITY
E3 NORTH**

**WEDNESDAY DECEMBER 7th
6:00 - 8:00 p.m.**

**COUNCIL CHAMBERS
111 SANDIFORD DR, STOUFFVILLE**

The Town of Whitchurch-Stouffville is planning for construction of Stormwater Management Facility E3 North located on the north side of Hoover Park Dr, east of Highway 48. This facility was contemplated in the Community of Stouffville Secondary Plan, and the Functional Servicing Study Southwest Quadrant, and will be implemented as a Schedule A project having satisfied Phases 1 and 2 of the Municipal Class EA Planning and Design Process based on an "integrated approach" as set out in Section A.2.9 of the Municipal Class Environmental Assessment.



The purpose of the Public Information Meeting is to present the design details of the expanded stormwater management facility for public review and to receive input from stakeholders prior to construction. There will be a brief presentation at 7:00pm.

If you are unable to attend the Public Information Meeting, or would like to obtain additional information about the project, please contact Troy Bauman, Project Manager, at ext. 2311 or troy.bauman@townofws.ca

This notice issued 24 November 2011.

NOTICE OF PUBLIC WORKSHOP

OPEN HOUSE

The Ballantrae - Musselman Lake and Environs
Secondary Plan / Highway 48 Corridor Review
DRAFT Background Report

Date: **December 7, 2011**
Time: **6:30 - 9:00 PM**
Location: **Ballantrae Community Centre,
5592 Aurora Road**

6:30 Doors Open
6:30 - 7:30 Review Presentation Boards/Staff and Consultants available for questions/discussion
7:30 - 8:30 Introduction / Presentation/General questions and comments
8:30 - 9:00 Staff and the Consultants available for questions / discussion

The meeting will provide an opportunity to obtain more information about the ongoing Ballantrae - Musselman Lake and Environs Secondary Plan / Highway 48 Corridor Review. For more information, visit the Town's web site or contact Alan Drozd, Manager, Planning Services at ext. 2320 or via email at alan.drozd@townofws.ca

REMINDER TO RESIDENTS



WINTER PARKING RESTRICTIONS

Winter parking restrictions are in effect **December 1, 2011 until March 31, 2012** to ensure all roadways are clear throughout the municipality. Such operations are required to keep roadways safe for the public and accessible for emergency service vehicles.

Winter parking restrictions are:

- On-street parking is prohibited between 2:00 a.m. and 6:00 a.m.
- On-street parking is prohibited in the event that snow clearing operations are required.

All those in violation of these restrictions will be given Parking Infraction Notices carrying a fine of \$50.00.



TOYS FOR TICKETS

Between December 1st and 12th, 2011, the Town will accept donations in lieu of overnight parking fines.

Donations of new, unwrapped children's toys, gift certificates, clothing or non-perishable food items will be accepted. Please don't forget the teenagers!

The value must be equal to or greater than that of the set fine (purchase receipts are required).

The donations will be distributed to the Lions Club of Whitchurch-Stouffville and the Stouffville Food Bank.



SANTA CLAUS PARADE SATURDAY DECEMBER 3RD at 2:00 p.m.

Tenth Line from North Street to Main Street and west on Main Street to Mostar Street

presented by the Stouffville Kinsmen