

RECREATION: Volunteers help maintain eight facilities

Most-popular outdoor rink getting facelift

BY SANDRA BOLAN
sbolan@yrmg.com

Vandorf Park's outdoor rink will be repaired and have its playing court replaced for less than what was budgeted.

Sports Systems Unlimited Corp., which also supplies NHL rinks, won the contract with a bid of \$68,478. The project has a budget of \$125,000, according to a report to town council by Mike Richardson, man-

ager of facilities and parks for the Town of Whitchurch-Stouffville.

The Vandorf Park rink is the "most used outdoor rink in the town," according to Mr. Richardson. However, he said it had not been paved for more than 20 years.

The project design is expected to be finalized by Dec. 1, according to the report, which also noted work will take a maximum of two weeks to complete.

The rink in Vandorf Park, on Woodbine Avenue south of Aurora Road, is one of eight outdoor rinks maintained by volunteers, with some assistance from town staff.

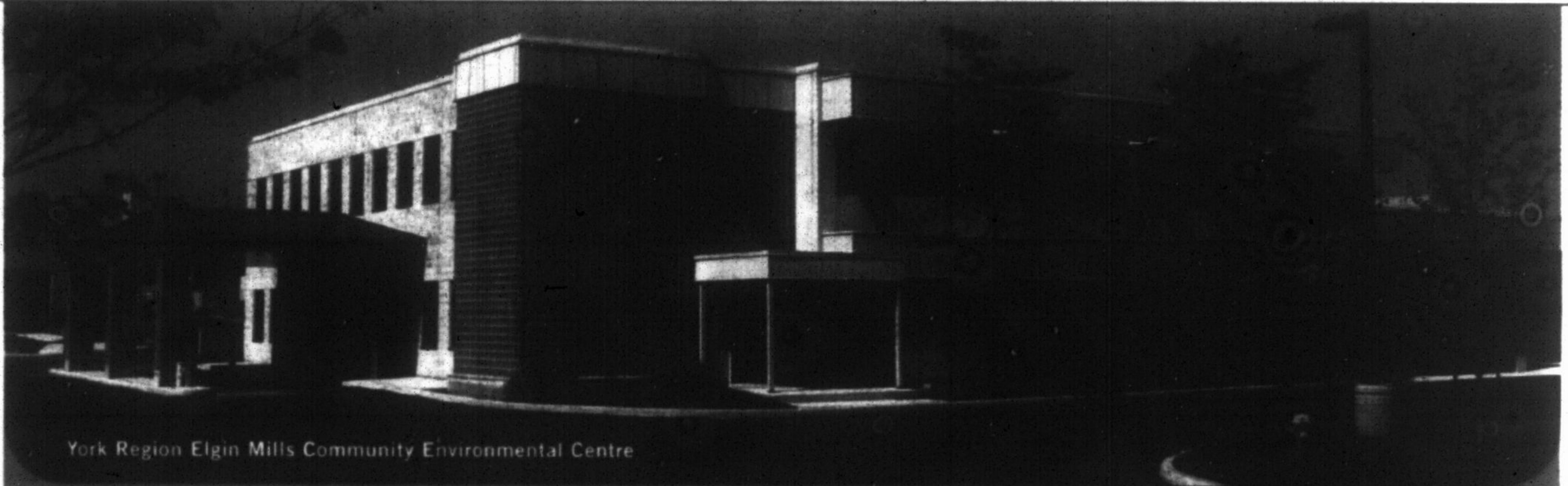
HELP APPRECIATED

"It's nice to be one of the few towns that still has outdoor rink facilities and really good volunteers and we partner

really well with them," Mr. Richardson said.

The other outdoor rinks are in Madori, Rupert, Wheeler's, Byer's Pond Way, Trestown and Ballantrae parks.

There is also one traditionally in Memorial Park, however, Mr. Richardson said because the renovation to the park has just been completed, town staff are not sure where it will be located this year.



York Region Elgin Mills Community Environmental Centre

ELGIN MILLS CEC NOW OPEN

The Elgin Mills Community Environmental Centre (CEC) provides a convenient, one-stop location to drop off a variety of reusable and recyclable materials to be diverted from landfill.

The Elgin Mills CEC accepts a wide variety of items to be reused, recycled or disposed, including:

REUSE DROP-OFF
(free of charge)

- Books, CDs and DVDs
- Cabinets
- Clothing
- Doors
- Fabrics and textiles
- Furniture
- Hardware and tools
- Housewares
- Light fixtures
- Lumber
- Plumbing fixtures
- Tools
- Windows

RECYCLING
(free of charge)

- Blue Box items
- Cardboard
- Clean fill / soil
- Compact fluorescent light bulbs
- Concrete and rubble
- Drywall
- Electronics
- Household batteries
- Large metal appliances
- Refrigerated appliances*
- Scrap metal
- Shredded paper
- Tires
- Wood (untreated lumber)

WASTE DISPOSAL

- Non-reusable goods*
- Non-recyclable goods*

NOT ACCEPTED

- Household Hazardous Waste
- Green Bin waste
- Industrial waste
- Yard waste
- Loads greater than a 14-foot cube van

*Items are subject to a fee.

ELGIN MILLS COMMUNITY ENVIRONMENTAL CENTRE
1124 Elgin Mills Road East,
Town of Richmond Hill

HOURS OF OPERATION:
Thursday to Monday,
9:30 a.m. to 4:30 p.m.
Closed Tuesdays and
Wednesdays.



For more information on York Region waste management programs and services, please visit www.york.ca/waste or call 1-877-449-9675 ext. 3000.

