

**Ducks Unlimited chapter taking off in Stouffville**

Ducks Unlimited Canada's new Stouffville committee will hold its inaugural conservation auction and fundraising dinner Oct. 30 at Sleepy Hollow Country Club.

The evening will feature a roast beef buffet, silent and live auctions and other opportunities to support the organization's efforts to save and enhance wetlands throughout Canada.

Since its founding in 1938, Ducks Unlimited has worked on more than 60 million acres of wetland habitat across the country, which in turn support more than 600 species of animals and birds.

In the Stouffville area alone, the organization has spent more than \$6 million on 49 wetland habitat sites, according to a media release.

For more information, tickets or sponsorship opportunities, call John Pehar at 416-357-8448.

**WALMART CORRECTION NOTICE**

For our flyer effective Sept. 23 - 29/11: Page 4: The Rogers Nokia C3 (#8717542) may not be available in all stores. Page 7: The copy description for the Black & Decker 6-Slice Convection Toaster Oven (#30092184) should read 9" pizza. Page 8: Softsoap Aloe 1.65 L Large Size Refill (#289926) should be 3.77. Page 9: Gillette Sensor Excel Cartridge 10's (#237911) and Venus Cartridge 8's (#237960) should be 13.77.

*We apologize for any inconvenience this may have caused*

**FLYERS**

Inserts for Thursday, Sep. 29, 2011

- |                          |                           |
|--------------------------|---------------------------|
| NISSAN/INFINITI*         | FOOD BASICS*              |
| TIGER DIRECT*            | THE BRICK*                |
| UPTOWN FURNITURE*        | ORIENTAL FOOD MART*       |
| LOWES*                   | FIRST CHOICE SUPERMARKET* |
| COMBO WRAP*              | NO FRILLS*                |
| SEARS*                   | TSC STORES*               |
| DIRECT ENERGY*           | HUSQVARNA*                |
| RONA*                    | FRESHCO*                  |
| TOYS R US*               | PUBLIC MOBILE*            |
| HOME DEPOT*              | PHARMASAVE*               |
| FUTURE SHOP*             | WALMART*                  |
| STAPLES*                 | LOBLAWS*                  |
| PARTY PACKAGERS*         | ZELLERS*                  |
| LEON'S FURNITURE*        | MARKS WORK WEARHOUSE*     |
| HOME OUTFITTERS*         | FM INDUSTRIES*            |
| MICHAEL'S ARTS & CRAFTS* | PIZZA HUT*                |
| PARTSOURCE*              | FOOD BASICS*              |
| BEST BUY*                | SPORT MART*               |
| SPORT CHEK*              | HOME HARDWARE*            |
| NO FRILLS*               | BLACK'S*                  |
| 2001 AUDIO VIDEO*        | ZEHRS*                    |
| GIANT TIGER*             | IDA-STOUFFVILLE*          |
| SOBEYS-GARDEN MARKET*    | TIDE*                     |
| M&M MEATS*               | FOREVER YOUNG*            |
| VINCE'S MARKET*          | FOODLAND*                 |
| FOODY MART*              | REAL CANADIAN SUPERSTORE* |
| SAVER PAGES*             | MICHAEL ANGELO'S*         |
| LONGO'S FRUIT MARKET*    | CELESTIAL TEAS*           |
| SHOPPERS*                | BATH FITTER*              |
| METRO*                   | REXALL*                   |
| LOBLAWS*                 | T&T SUPERMARKET*          |
| NATIONAL SPORTS*         | ELGIN CARE PHARMACY*      |
| THE BAY*                 | NATURE'S EMPORIUM*        |
| WALMART SUPERCENTRE*     | SPORT CHEK*               |
| CANADIAN TIRE*           |                           |

No one delivers results like we do! To find out more about how to reach your target market and get the same great response from your flyer, visit us at [flyerland.ca](http://flyerland.ca). These customers, call us today. \*Selected areas only.

**Sun-Tribune**  
visit [flyerland.ca](http://flyerland.ca)

**905-294-2200**

**HURRY. EMPLOYEE PRICING ENDS SEPT 30.**

**Ford**  
**EMPLOYEE PRICING**



**JOIN OVER 1 MILLION CANADIANS WHO HAVE SHARED OUR PRIDE AND SHARED OUR PRICE**

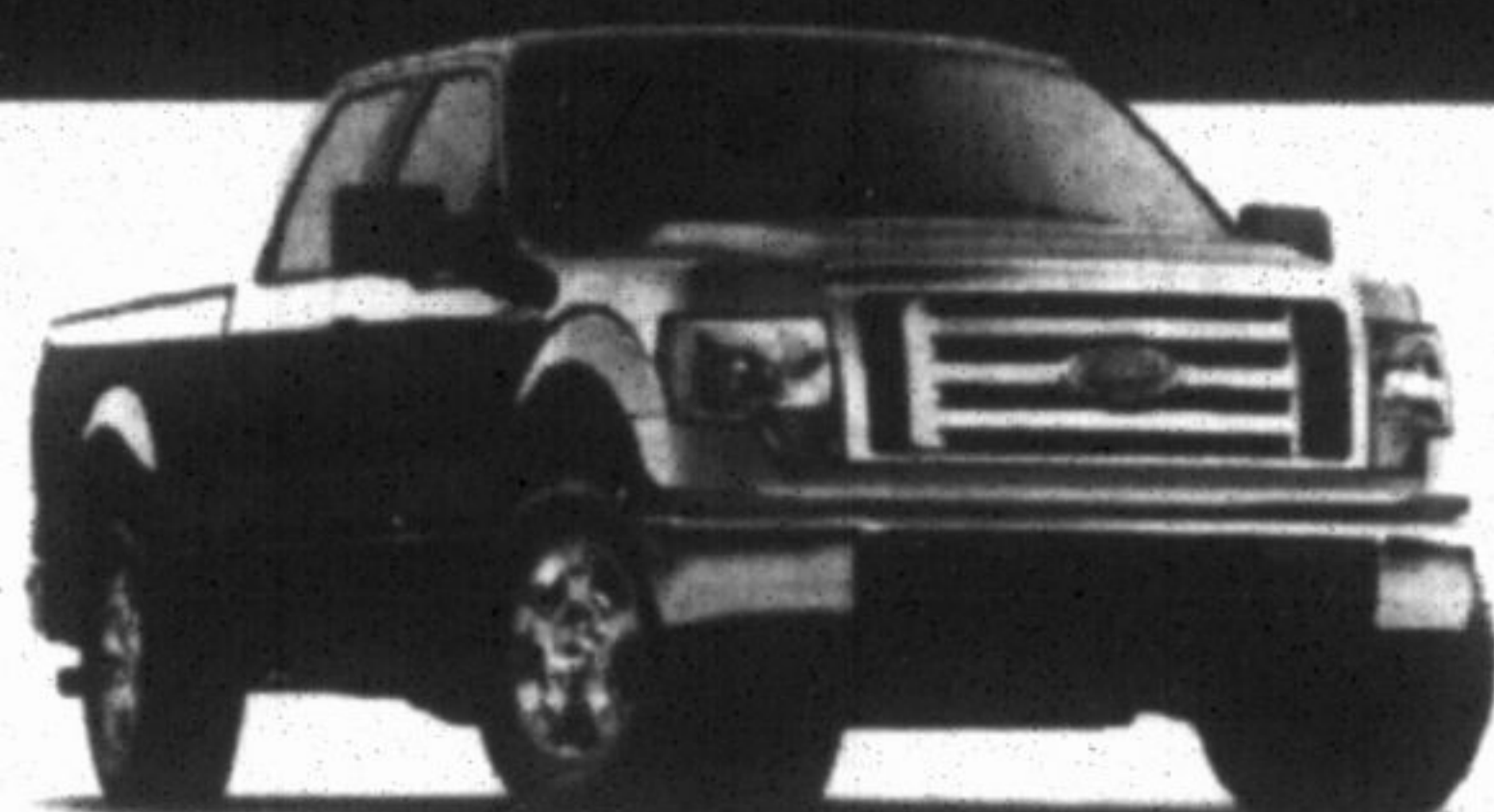
\*\*\*TOTAL CAMPAIGN-RELATED SALES FROM 2005 TO PRESENT.

WITH UP TO **\$12,000** + **\$1000** RECEIVE

IN PRICE ADJUSTMENTS

2011 F-250 Super Cab 4x4 Diesel amount shown

**COSTCO** FOR ELIGIBLE COSTCO MEMBERS



**2011 F-150 SUPERCAB XLT**

Share our Employee Price

**\$25,408\***

Offer excludes taxes

Employee Price Adjustment.....\$3,621  
Delivery Allowance.....\$6,000  
Total Eligible Price Adjustment.....\$9,621

ALL-NEW 4 CYLINDER • BEST IN CLASS TORQUE\* • BEST IN CLASS PAYLOAD\*  
BEST IN CLASS TOWING\* • BEST IN CLASS FUEL ECONOMY (DIESEL MODELS)\*



**8.9L/100km 32 MPG HWY\***  
**12.8L/100km 22 MPG CITY\***



**2011 ESCAPE XLT AUTO**

Share our Employee Price

**\$22,288\***

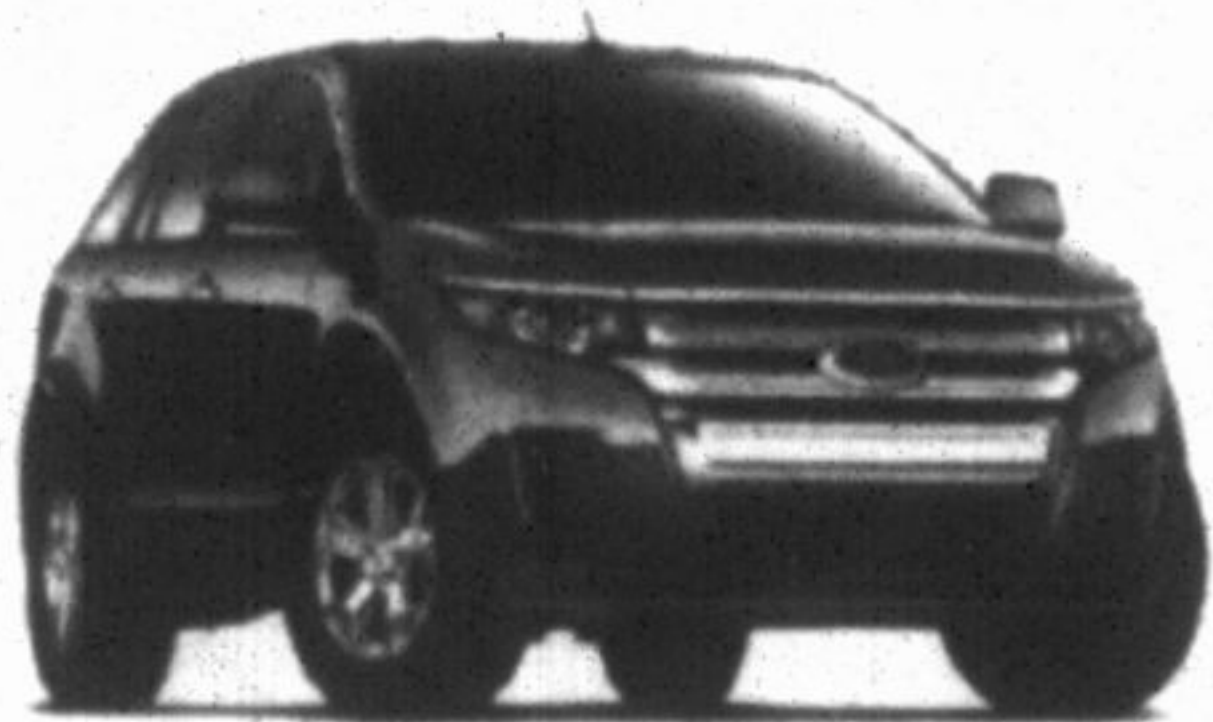
Offer excludes taxes

Employee Price Adjustment.....\$1,891  
Delivery Allowance.....\$3,000  
Total Eligible Price Adjustment.....\$4,891

**CANADA'S BEST SELLING COMPACT SUV\*\***



**7.1L/100km 40 MPG HWY\*\***  
**10.0L/100km 28 MPG CITY\*\***



**2011 EDGE SEL**

Share our Employee Price

**\$30,359\***

Offer excludes taxes

Employee Price Adjustment.....\$2,720  
Delivery Allowance.....\$2,500  
Total Eligible Price Adjustment.....\$5,220

**BEST NEW SUV/CUV \$35,000-\$50,000**



**7.4L/100km 38 MPG HWY\*\***  
**11.2L/100km 25 MPG CITY\*\***

Our advertised prices include Freight, Air Tax, PMSA and the Stewardship Ontario Environmental Fee. Add dealer administration and registration fees of up to \$799, fuel fill charge of up to \$120, and applicable taxes, then drive away.\*

**SIRIUS SATELLITE RADIO** Available in most new Ford vehicles with 6 month pre-paid subscription.



Drive one.

[ontarioford.ca](http://ontarioford.ca)

**It's your last chance to get your Employee Price. Hurry into your Ontario Ford Store today.**