

HURRY.
EMPLOYEE
PRICING
ENDS
SEPT 30.

Ford
**EMPLOYEE
PRICING**



JOIN OVER 100,000 CANADIANS WHO HAVE SHARED OUR PRIDE AND SHARED OUR PRICE

††TOTAL CAMPAIGN-RELATED SALES FROM 2005 TO PRESENT.

WITH UP TO **\$12,000** + **\$1,000** RECEIVE

IN PRICE ADJUSTMENTS

2011 F-250 Super Cab 4x4 Diesel amount shown

COSTCO FOR ELIGIBLE COSTCO MEMBERS



The all-new 2012 FOCUS SE

Share our Employee Price

\$18,349*

Offer excludes taxes

Employee Price Adjustment.....\$1,280
Delivery Allowance.....\$1,000
Total Eligible Price Adjustment.....\$2,280

INTRODUCING THE ALL-NEW 2012 FOCUS



4.8L/100km 59 MPG HWY*
7.2L/100km 39 MPG CITY*



2011 FIESTA SE HATCHBACK

Share our Employee Price

\$16,296*

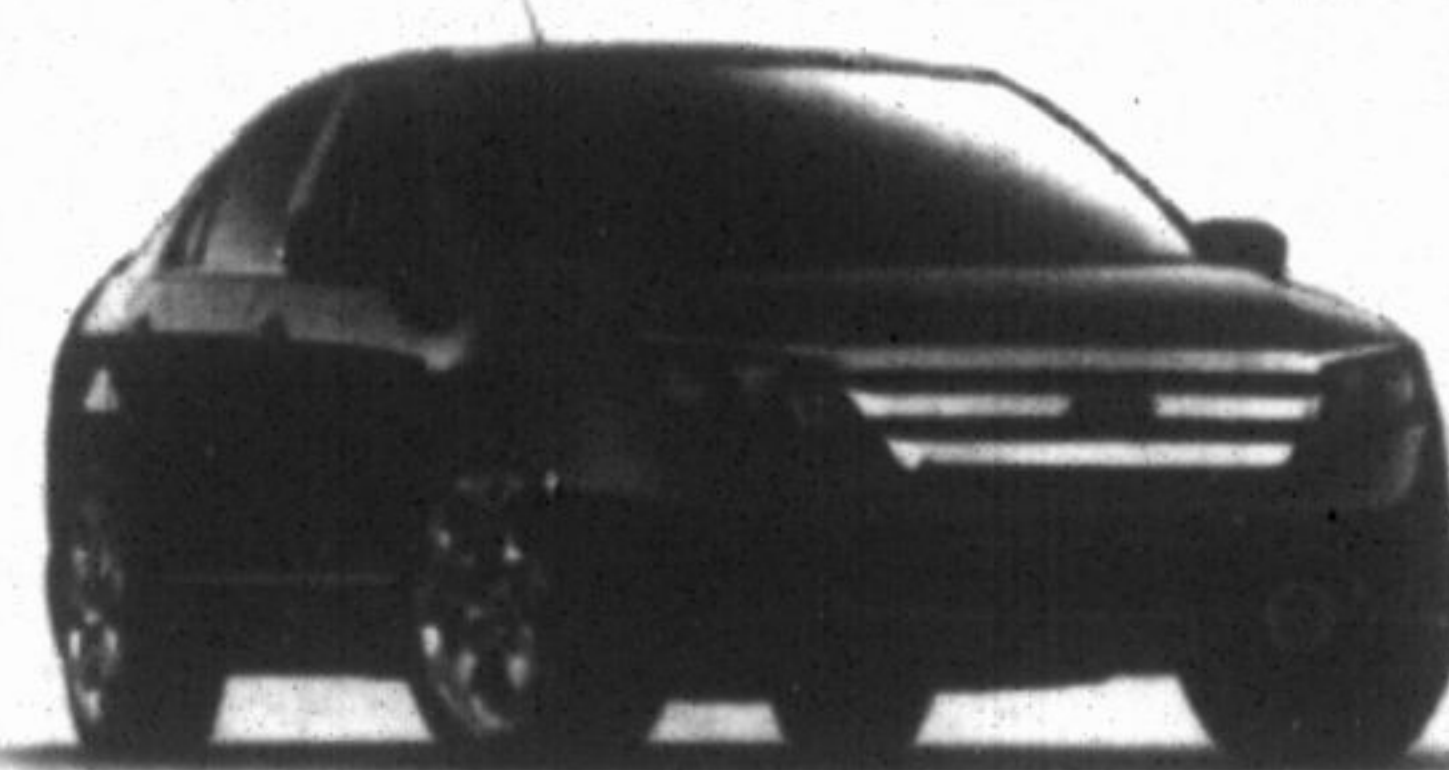
Offer excludes taxes

Employee Price Adjustment.....\$1,083
Delivery Allowance.....\$1,000
Total Eligible Price Adjustment.....\$2,083

DRIVE UP TO 927KM*** ON A SINGLE TANK



5.3L/100km 53 MPG HWY**
7.1L/100km 40 MPG CITY**



2011 FUSION SE AUTO

Share our Employee Price

\$21,644*

Offer excludes taxes

Employee Price Adjustment.....\$1,835
Delivery Allowance.....\$2,500
Total Eligible Price Adjustment.....\$4,335

CANADA'S BEST SELLING MIDSIZE SEDAN*



6.0L/100km 47 MPG HWY**
9.0L/100km 31 MPG CITY**

SIRIUS Available in most new Ford vehicles with 6-month pre-paid subscription

*Our advertised prices include Freight, Air Tax, DPSSA and the Stewardship Ontario Environmental Fee. **City, dealer administration and registration fees of up to \$799, fuel fill charge of up to \$120 and applicable taxes, then drive away.



Drive one.

ontarioford.ca

It's your last chance to get your Employee Price. Hurry into your Ontario Ford Store today.

your PLANNER

THURSDAY
SEPTEMBER

22

LEGION WEEK

Royal Canadian Legion Week is on at the Stouffville branch. Darts or mini putt at 7 p.m. tonight. Call 905-640-1714.

THURSDAY
SEPTEMBER

22

HOCKEY TOWN

The Stouffville Spirit hosts the Aurora Tigers in Ontario Junior Hockey League action at the Stouffville Arena at 7:30 p.m. Go to stouffvillespirit.com

THURSDAY
SEPTEMBER

22

DIG IN

Harry Bowes Public School's fall fair and apple pie sale is on at the school from 4 to 7:30 p.m. Call 905-640-9856.

FRIDAY
SEPTEMBER

23

PA DAY, EH?

The Town of Whitchurch-Stouffville is hosting skating (1 to 3 p.m.) and swimming (1:30 to 3:30) during today's PA day. Call 904-642-PLAY

FRIDAY
SEPTEMBER

23

MAKE REQUESTS

Richard Blaze plays the club room at the Stouffville legion, Mostar Street, from 6 to 10 p.m.

SATURDAY
SEPTEMBER

24

ALL NATURAL

Nature's Creation, an arts and crafts fair, is on from 10 a.m. to 2 p.m. on the Hollidge and Eldred King tracts of the York Forest, Hwy. 48. Call 1-877-464-9675.

SATURDAY
SEPTEMBER

24

OPEN HOUSE

The Town of Whitchurch-Stouffville invites the public to the opening of its new civic centre, 111 Sandford Dr., from 10 a.m. to 2 p.m.

SUNDAY
SEPTEMBER

25

BELL SOUNDS

Juno-award-winning Steve Bell plays EastRidge church in Stouffville at 7 p.m. Tickets are \$15 from the church (905-640-3911).

THURSDAY
SEPTEMBER

29

WHAT THE

Motus O dance company presents What The Heck? at Nineteen on the Park Sept. 29 and 30 and Oct. 1. Go to nineteenonthe-park.com or call 905-640-2322

For more community events, visit yorkregion.com and click on POP personal online planner

To add an event to this listing, e-mail Jim Mason at jmason@yorkregion.com. Event organizers can also register with POP at yorkregion.com to have events listed free online