




TOWN OF  
**WHITCHURCH-STOUFFVILLE**  
*celebrating 40 years*

111 Sandiford Drive  
Stouffville, Ontario L4A 0Z8  
905-640-1900 or 1-855-642-TOWN (8696)  
[www.townofws.ca](http://www.townofws.ca)

Lebovic Leisure Centre 905-642-PLAY(7529) • Public Library 905-642-READ(7323) • Museum 905-727-8954 OR 1-888-290-0337

**NOTICE OF COUNCIL MEETING**

 Council Chamber • 111 Sandiford Drive  
**TUESDAY AUGUST 23<sup>RD</sup>**  
COUNCIL MEETING at 9:00 a.m.  
COUNCIL CHAMBERS  
111 SANDIFORD DRIVE

**CONSTRUCTION NOTICE**

Please be advised that construction has started on the improvements to the intersection of Hoover Park Drive and Park Drive/Reeves Way Boulevard in Stouffville. Decorative pedestrian crossings will be constructed first, followed by the installation of new traffic control signals in August. Please consider an alternate route and exercise caution if you do travel through the construction area.

**TENDERS**

**RETRO-REFLECTIVITY INSPECTION  
WS-RFP-11-34**

The Proposal document is available at the Municipal Office located at 111 Sandiford Drive after August 3, 2011.  
*Proposals will be accepted until 3:00 p.m. on Wednesday, August 10, 2011*

**TENDER WS-RFQ-11-35  
CATCHBASIN & CURB REPAIR**

Sealed quotations, submitted on the forms and in the envelopes provided by the Town of Whitchurch-Stouffville, appropriately marked, shall be received by:

Clerk's Department  
Town of Whitchurch-Stouffville  
111 Sandiford Drive  
Stouffville, Ontario L4A 0Z8

*Prior to 3:00 o'clock p.m., local time on  
Wednesday August 10th, 2011.*

For further information on either of the above, please see our website at [www.townofws.com/bids.asp](http://www.townofws.com/bids.asp).

**RECRUITMENT**

**PERMIT INFORMATION CLERK  
PLANNING AND BUILDING SERVICES DEPARTMENT**

The Town of Whitchurch-Stouffville is one of Ontario's premier municipalities, ranked as one of the top 10 Towns in which to invest by the Real Estate Investment Network. Join our growing team in this administrative support role. Key responsibilities include updating Property Management System data; maintaining currency of building permits and property files; coordinating distribution of application submissions for review; assessing permit applications for completeness; ensuring the utilization of prescribed provincial forms; collecting fees and balancing of accounts payable. You'll also provide customer reception and liaison duties and monitor permit workflows and processes.

For more information, please see our website at <http://www.townofws.com/jobs.asp>

Please forward your resume in confidence, identifying position applied for, by August 23, 2011 to:

Executive Assistant, Human Resources Services,  
Town of Whitchurch-Stouffville,  
111 Sandiford Drive, Stouffville, Ontario, L4A 0Z8 or  
Fax: (905) 640-9259 or Email: [hr@townofws.ca](mailto:hr@townofws.ca)

**NOTICE OF STUDY  
COMMENCEMENT**

**THE BALLANTRAE - MUSSELMAN LAKE AND ENVIRONS  
SECONDARY PLAN/HIGHWAY 48  
CORRIDOR REVIEW**

The Town of Whitchurch-Stouffville is commencing a review of the Ballantrae-Musselman Lake and Environs Secondary Plan with a focus on the Highway 48 Corridor. This notice is intended to advise you about the study process and to invite your initial input through a survey or other written comments. Survey responses may be sent to Alan Drozd, Manager of Planning Services.

Your input throughout this study is welcome and valued. You can track the progress of this project by viewing updates posted and participate in the survey on the Town's website at:

[www.townofws.com/ballantrae\\_musselman\\_lake\\_sec\\_plan.asp](http://www.townofws.com/ballantrae_musselman_lake_sec_plan.asp)

**UPCOMING EVENTS**



**INSIDE**

**WHITCHURCH-STOUFFVILLE  
THURSDAY, AUGUST 25th, 2011**

Inside Whitchurch-Stouffville 2011 is being held in conjunction with the annual Moonlight Madness sale

Where: Civic Square in front of the Lebovic Centre for Arts & Entertainment - *Nineteen on the Park*.

Come meet various service groups, volunteer organizations and sports clubs that service the Town and hear how these groups help make Whitchurch-Stouffville a great place to live!

The following is a sampling of the groups and organizations that are participating:

- Town of Whitchurch-Stouffville
- Whitchurch-Stouffville Chamber of Commerce
- Terry Fox Run
- Canadian Cancer Society
- Royal Canadian Air Cadets
- Stouffville Skating Club

**CALLING ALL COMMUNITY-ORIENTED, CHARITABLE,  
NOT-FOR-PROFIT ORGANIZATIONS**

Would you like to let people know more about what YOU have to offer? It is not too late to participate. For more information, please contact Gillian Angus-Trail at [gillian.angustrail@townofws.ca](mailto:gillian.angustrail@townofws.ca).

**STOUFFVILLE BUSINESSES:  
2011 STOUFFVILLE PROFESSIONAL  
& TECHNICAL CAREER FAIR**

Are you hiring professional or technical employees? The Career Fair targets highly talented professionals seeking career opportunities with exceptional local employers. The Career Fair also celebrates and promotes local companies with professional or technical employment opportunities.

The 2011 Career Fair will be held at *Nineteen on the Park!* Wednesday October 5, 2:00pm to 8:00pm. For more information contact Rebecca Mustard at 905-640-1910 ext. 2301 or [rebecca.mustard@townofws.ca](mailto:rebecca.mustard@townofws.ca).

**NOTICES CONT'D**



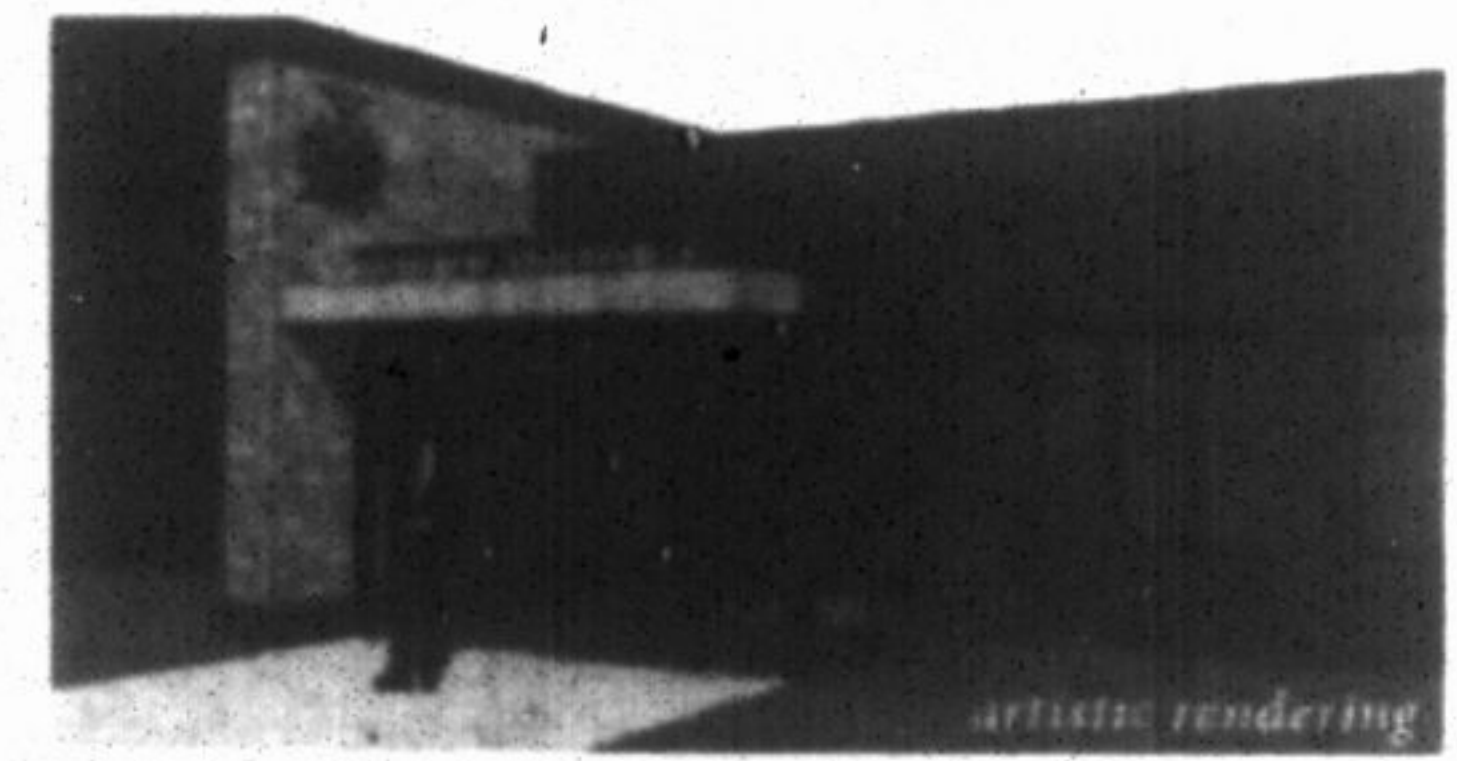
The Town of Whitchurch-Stouffville Municipal Offices have now moved to 111 Sandiford Dr.

To serve the public better, our new Customer Service Centre will be open from 8:00 a.m. to 5:00 p.m. for information and payment processing.

The Town now offers toll-free phone numbers for those living / working outside of the local calling area; these new numbers replace the previous Newmarket (895-XXXX) numbers. The local phone numbers remain the same.

- 905-640-1900 or 1-855-642-TOWN (8696) to speak with a Customer Service Associate
- 905-640-1910 or 1-855-642-TOWS (8697) for the automated attendant

Effective August 3rd, 2011, staff can be contacted via a four-digit extension number or by adding a "2" in front of their existing extension number.



**DOG TAGS**

The Town of Whitchurch-Stouffville requires owners of all dogs over the age of 16 weeks to have a current Town-issued dog tag. Dog tags can be purchased at the Town Municipal Offices at 111 Sandiford Drive. Town-authorized Dog Tag Sellers are now selling dog tags door-to-door. Sellers will be wearing photo I.D. badges. The cost of a tag is \$41.00.



If you are a new resident with a current dog tag from another municipality, please contact the Licensing and Public Services Coordinator for details on how to exchange your existing tag for a Town of Whitchurch-Stouffville tag at no cost. The Town appreciates your cooperation in licensing your dog! 905-640-1910 x2225 or 1-855-642-TOWS x2225.

**NOTICE TO RESIDENTS**

Banded fire hydrants ARE functional hydrants. The bands, "anti tamper devices", are put in place in the areas such as new developments, etc, where the hydrants are in an area historically more likely to be used without permission.

Please do NOT park in front of any fire hydrants as this is a parking violation.



**\$5 Car Wash at the Stouffville Fire Hall**

**(100 Weldon Rd)**

**August 6th, 2011 from 9 AM to 1 PM**

**Come out to support the UNITED WAY**

