

Canadian Tire
STOUFFVILLE

Sale Date: July 28 to Aug. 4, 2011

Everything To Enjoy
The Long Weekend!

15" BBQ Tongs



\$250

SAVE 50%
Reg: \$4.99
85-1728

BBQ Lighter



\$119

SAVE 40%
Reg: \$1.99
85-1409

57" Team Canada BBQ Cover



\$2999

SAVE 50%
Reg: \$59.99
85-1647

Picnic Backpack



\$2999

SAVE 57%
Reg: \$69.99
76-3438

Cuisnart Propane BBQ

• Only 6 left • Available on in stock only



\$39999

SAVE 20%
Reg: \$499.99
85-3032

Cuisnart Natural Gas BBQ

• Only 6 left • Available on in stock only



\$44999

SAVE 18%
Reg: \$549.99
85-3033

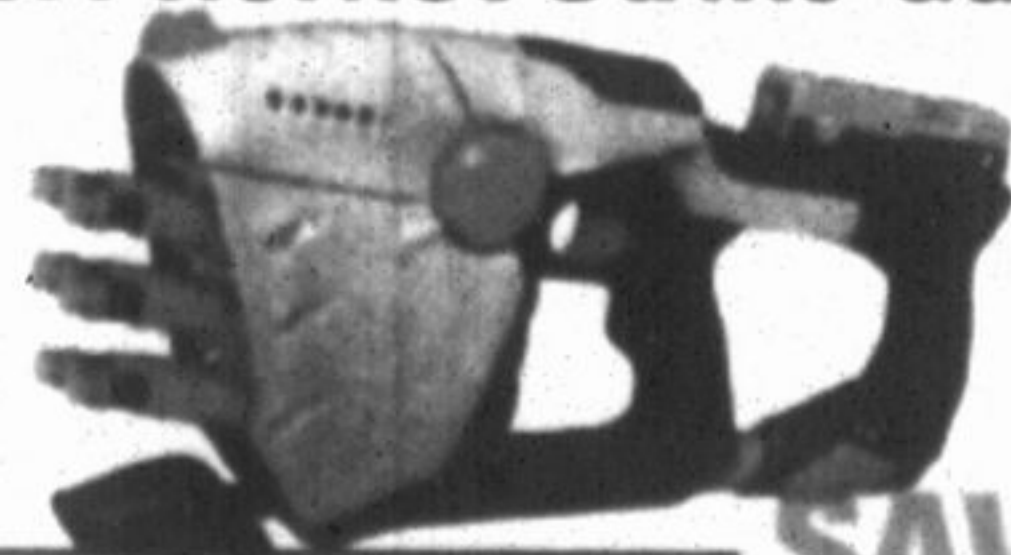
48 Can Soft Deluxe Collapsible Cooler



\$999

SAVE 71%
Reg: \$34.99
85-3558

KEEP THE KIDS ENTERTAINED Nerf Hornet Strike Gun



\$1049

SAVE 58%
Reg: \$24.99
50-1957

1090 Hoover Park Dr. • Store: 905-640-5800 • Auto Service: 905-640-5050

SUNDAY: 9-6 • MONDAY-FRIDAY: 8-9 • SATURDAY: 8-6
WHILE QUANTITIES LAST - THIS LOCATION ONLY - NO RAINCHECKS

BUSINESS: Metro location first under new drive-thru rules

Scotiabank opening new branch

BY SANDRA BOLAN
sbolan@yrmg.com

Metro and Harvey's/Swiss Chalet are getting a new neighbour.

Scotiabank has received site plan approval to open a branch midway between Sandale Road and the Metro grocery store. It will front Main Street, with a drive-thru on the north side.

Construction on the single-storey 5,000-square-foot building is anticipated to begin this summer, with the branch opening in the spring, according to Scotiabank spokesperson Robyn Harper.

The fate of the current branch, located in downtown Stouffville at 6323 Main St., remains unknown.

"We're still considering our options," Ms Harper said.

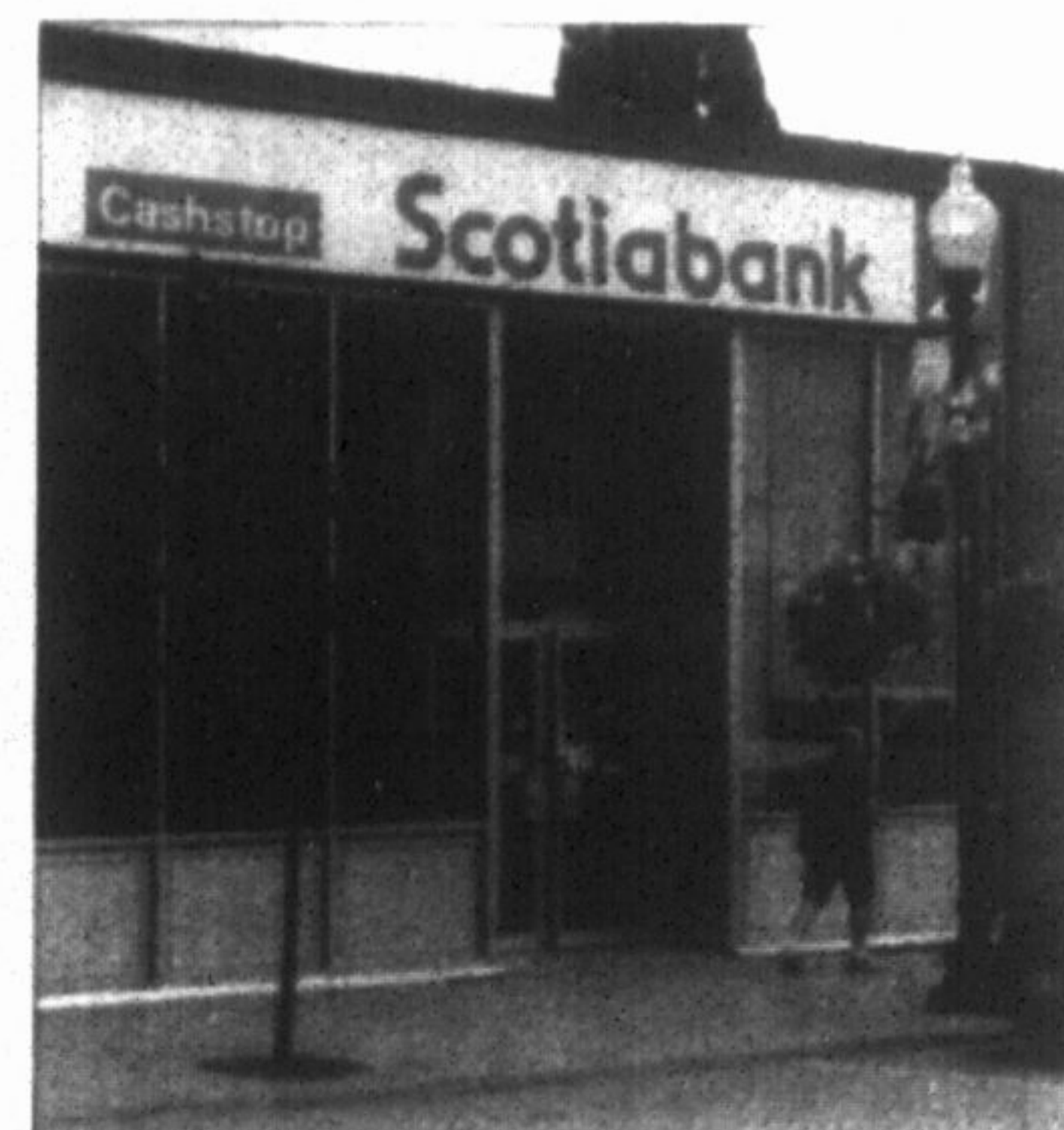
The site plan approval is the first one granted since drive-thru regulations were put into the town's new zoning bylaw earlier this year.

The stipulations, however, did not come without controversy.

When the town first tabled its new zoning bylaw in March 2010 it stated drive-thru facilities, other than those already in existence, would only be permitted by exemption.

Michael Polowin, a partner at Gowling Lafleur Henderson LLP in Ottawa and solicitor for the Ontario Restaurant Hotel and Motel Associations, McDonald's, Wendy's, A&W restaurants and TDL Group, took the ban to the OMB.

Negotiations between both parties, prior to the OMB hearing, resulted in an amicable solution approved by the OMB: drive-thrus



STAFF PHOTO/JIM MASON

The future of the downtown Stouffville Scotiabank branch has not been decided.

will be allowed, in conjunction with permitted uses in specific commercial zones throughout the town.

Drive-thrus currently in place include Main Street's McDonald's, Harvey's, Tim Hortons, Country Style, TD Canada Trust, RBC, Classic Greek and the former Burger King, as well as Tim Hortons and A&W in the SmartCentres development on Hoover Park Drive.

Prior to the new zoning bylaw, approval was given to Tim Hortons in Gormley.

UXBRIDGE HEARING CENTRE

Wittrup Audiology Corporation



WHAT WE DO

- Full service hearing clinic
- Affordable hearing aids available
- Full audiometric testing
- All make repairs
- Hearing aids come with lifetime support & service
- 60 day money back guarantee
- Wheelchair accessible-Free Parking
- Testing available for children of all ages
- Custom fit earplugs for noise protection or swimming



SUE WITTRUP
AUDIOLOGIST

UXBRIDGE HEARING CENTRE OFFERS FRIENDLY, PERSONALIZED SERVICE.

11 Main St. N. (across from T.D. Bank)
Audiologist Susan Wittrup

905.852.4722

www.uxbridgehearingcentre.com