

**LEARNING:** Wendat Village P.S. to open next year

# Aboriginal name for town's next school

BY SANDRA BOLAN  
sbolan@yrmg.com

Stouffville's newest elementary school has been named after Aboriginals who once lived in Whitchurch-Stouffville.

Wendat Village Public School will open in September 2012 at Reeves Way Boulevard and Isabella Garden Lane, adjacent to a 16th century ancestral Aboriginal community known as the Wendat Mantle site.

## 16TH CENTURY COMMUNITY

The site was discovered by subdivision developers. Most of it is now the stormwater pond, with about five per cent preserved.

In deciding what to name the school, York Region District School Board trustee Lorelea Carruthers asked for community input and what she got was an overwhelming response to honour the Wendat people.

The school board, through an archeologist, contacted leaders of the Huron-Wendat Nation in Canada in an effort to seek their endorsement and assistance in naming the school.

Ms Carruthers said she was looking for Aboriginal words that meant education, learning or teaching. But they seemed too long and difficult to pronounce, so they opted to name the school after the Wendat community.

"I wanted to make sure we were doing something that honoured them, not something we thought was respectful but actually a slap in the face," she said.

Other residents wanted the school named after the late Cedric Watson, a former Stouffville principal.

When the school opens, it is expected to have about 200 to 300 students from junior kindergarten to Grade 8, according to Ms Carruthers. It will have a capacity of 576 students.

The two storey, 63,235-square-foot building, which is situated on about five acres of land, will have 27 classrooms, including five kindergarten classrooms. There will also be a

large library, resource centre and multi-space room.

Plans also accommodate the addition of eight more classrooms.

The school is anticipated to cost just over \$10 million, according to Ross Virgo, senior manager of public affairs and communications for the York board.

The school is intended to take in students who are within the area and currently attending Oscar Peterson Public School, according to a July 19 report to council by Catherine Kerr, planner, urban design for the Town of Whitchurch-Stouffville.

The last public schools to be constructed in Whitchurch-Stouffville were built two years ago — Oscar Peterson, which was technically a rebuild of Orchard Park Public School, according to Ms Carruthers, and Harry Bowes Public School.

Whitchurch Highlands Public School was demolished following the 2008-09 school year and rebuilt on its original site at Warden Avenue and Bloomington Road. It re-opened last September.

Construction on Wendat Village is expected to start this summer.

"It's right on schedule," Ms Carruthers said.

No other schools are planned for Whitchurch-Stouffville in the next five years, according to Ms Carruthers.

## NO NEWS ON OLD HIGH SCHOOL

The old Stouffville District Secondary School, on Bramble Crescent, was demolished last year and all that remains is a parking lot and a couple of light standards.

The playing fields to the west of the site are currently being used by the town.

"There has been no further development on the site and no further development concerning the disposition of the property," Mr. Virgo said.

The school closed in June 2007 and a new high school opened that fall at Weldon Road and Hoover Park Drive.

## Fires banned across towns

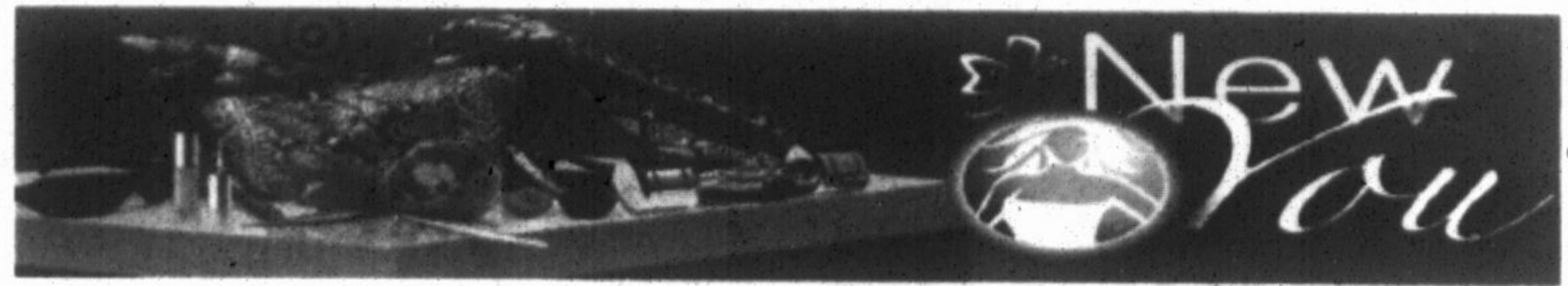
A fire ban has been issued for Georgina, East Gwillimbury, Whitchurch-Stouffville, King, Newmarket and Aurora.

The ban means all outdoor and open-air burning for any purpose, including recreational burning, is not allowed.

The ban will remain in effect until dry conditions improve.

You are strongly urged to comply with this ban as it has been issued for your property protection, safety and the safety of the firefighters who would have to respond to an incident started by the unlawful burning of materials.

For more information on the ban or other any fire safety information, contact your municipal fire service. In Whitchurch-Stouffville, call 905-640-9595.



**NEW Energy Light 2S**  
Lightweight triangle shape with Gundersen and arthro technology

Enjoy the benefits of Energy

**Pink Ribbon Boutique**  
Certified Mastectomy Fittings  
Mastectomy Bras & Bathing Suits  
Balance Shapers

Please call Marie for appointment  
377 Main St. N, Suite B, Markham  
**905-201-7371**  
www.pinkribbonboutique.ca

**Do you suffer from facial redness?**

If you experience persistent facial redness or flushing you may have a condition called rosacea.

A research study is being conducted to evaluate an investigational topical gel for the redness associated with rosacea.

Qualified participants will receive:

- Study-related skin evaluations by a study doctor
- Investigational gel medication or placebo (inactive substance);
- Potential compensation for your time and travel.

Call today to see if you may qualify:  
Dr. Charles Lynde  
5762 Highway 7 East, Suite 201, Markham  
905-471-8011 or by email [susan@lynderma.com](mailto:susan@lynderma.com)  
[www.myskinstudy.com](http://www.myskinstudy.com)

## MARKHAM STOUFFVILLE HEARING SERVICES LTD.

203-377 Church Street, Markham ON L6B 1A1  
T: 905-471-4327 F: 905-471-4338

For Your Best Hearing To Date!

Would you like to improve your hearing? *Life*

Science brings you closer to natural human hearing than ever before

**Toronto Hearing Services**

**MARKHAM**  
905-471-4327

Markham Stouffville Hearing Services  
Established 1990  
377 Church St., Suite# 203

**NORTH YORK**  
416-498-4151

The Audiology Centre  
Established 1986  
1333 Sheppard Ave. E. Suite# 340

**ETOBICOKE**  
416-233-8581

West End Hearing  
Established 1997  
1243 Islington Ave., Suite# 711

- SALES and SERVICE to ALL MAKES OF HEARING AIDS
- ADP, WSIB, DVA AUTHORIZED DISPENSERS
- Hearing Assessments - Newborn to Geriatric
- Hearing Aid Evaluations
- Batteries and Hearing Aid Accessories
- Assistive Listening Devices FM Systems
- Custom Hearing Protection - Musician and Swim Plugs

- Tinnitus Therapy
- NO CHARGE All Inclusive Loss and Damage Insurance - 1 year
- NO CHARGE All Inclusive Manufacturers Warranty - 2 years
- 34 Day Full Satisfaction Guarantee
- Associated With ENT (Ear, Nose and Throat) Doctor
- Full Time Experienced Certified Audiologists
- On Hand To Serve You

EVERY DAY IS SENIORS DAY! 10% Discount Off All Accessories & Batteries • PARKING AVAILABLE • FREE HEARING AID CLEANING