



STAFF PHOTOS/JOERD WITTEVEEN

Photographers focus on life in the York Regional Forest north of Ballantrae Saturday.

Development, bug threaten forest

From page 1.

compared to 1999, and Markham has 21 more.

Of course, forest has been lost elsewhere, with Newmarket shedding 15 hectares, Vaughan losing 177 and Georgina, more than 400.

The jewel in the region's arboreal crown is the York Regional Forest, comprised of 5,500 reclaimed hectares spread across 20 tracts in Whitchurch-Stouffville.

For nearly 15 years an advisory committee of diverse stakeholders has been meeting four times a year to discuss the forest.

Linda and Jim Bradley already rode their horses through the forest before running into Mr. Buchanan's predecessor and joining the team.

Now, Ms Bradley talks passionately about

her love for the forest, mentioning she and Mr. Bradley moved to a farm backing directly onto the forest, giving them access to 1,000 acres to explore on horseback.

"It's a beautiful place," she said. "You have to go walk in to appreciate it."

In the decade she's been involved with the team, Ms Bradley said parking lots near the forest are full most weekends.

"We don't want it overcrowded, but it's definitely being used," she said.

Development isn't the only pressure the region's trees face. There's also dwindling agricultural lands and the Emerald Ash Borer is expected to devastate ash trees that constitute as much as 10 per cent of some forest areas.

The region has a forest cover target of 25 per cent, something Mr. Buchanan sees as reasonable and sustainable, adding areas in the Oak Ridges Moraine and Rouge Park could be reclaimed.

LATE MODEL PRE-OWNED VEHICLES FULLY RECONDITIONED ALL MAKES AND MODELS

PURCHASE A CAR AND RECEIVE A FREE \$200 GAS CARD

PRE-OWNED CARS

2008 BMW 328 XI WAGON



PREMIUM PANORAMIC 4 DOOR STATION WAGON, 3.0L I-6 CYL AUTOMATIC AWD 36,674 KM

SALE \$31,995

2008 BMW 335 XI



PREMIUM PACKAGE MOONROOF 4 DOOR SEDAN 3.0L I-6 CYL AUTOMATIC DARK GREY WITH BLACK INTERIOR AWD 80,981 KM

SALE \$30,995

2008 BUICK ALLURE CXL



4 DOOR SEDAN, 3.8L V-6 CYL AUTOMATIC, LEATHER, 81,562 KMS

SALE \$13,995

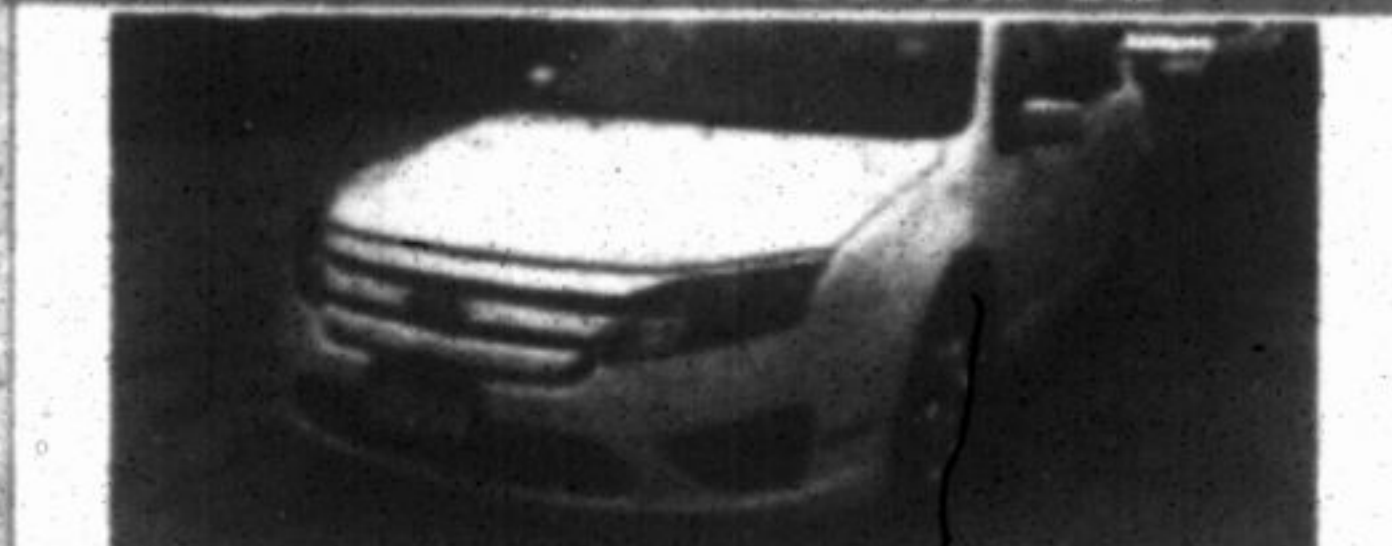
2007 INFINITI G35



AUTO, 3.5L V-6 CYL, CD / MP3, WIRELESS CONNECT LEATHER, HEATED SEATS, KEYLESS, PW, PL, MOONROOF, AIR, HOMELINK, ABS 78,881 KM

SALE \$22,995

2010 FORD FUSION SE



2.5L I-4 CYL, 6 SPEED AUTO, A/C, ABS, CD, KEYLESS, PW, PL, CD / MP3, SIRIUS SATELLITE RADIO, TRIP COMPUTER, ONE OWNER, 43,545 KM

SALE \$16,995

2009 MERCEDES-BENZ C300 4MATIC

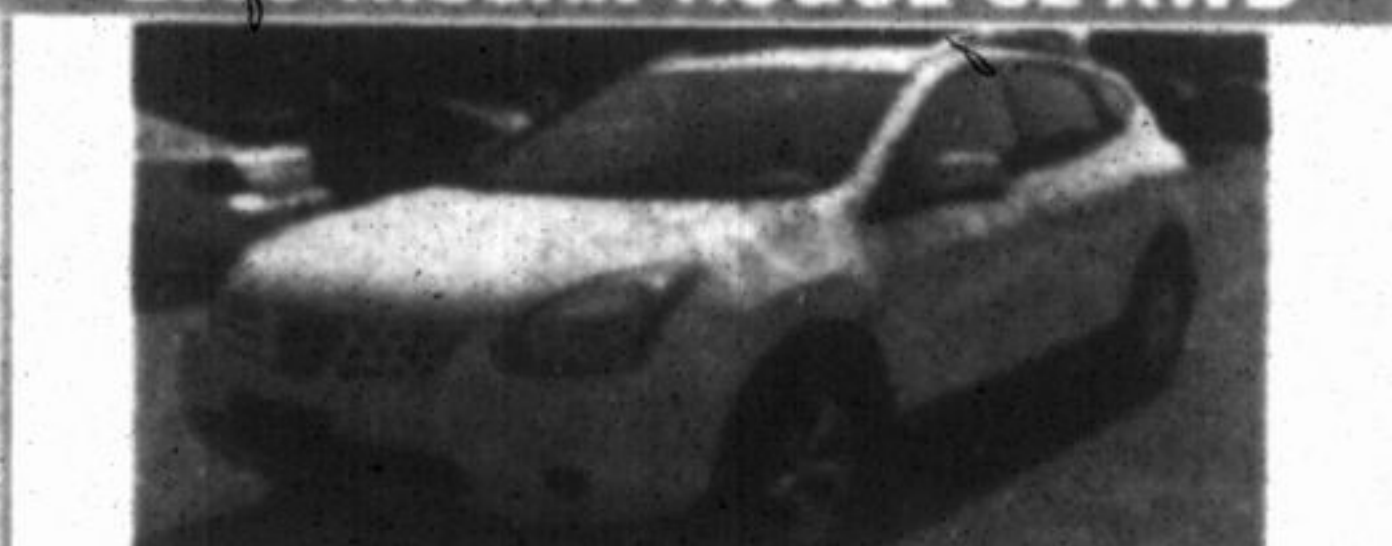


3.0L V-6 CYL, 7 SPEED AUTO, AWD, IPOD SETUP, LEATHER, SUNROOF, PREMIUM AND SPORT PKG, BLUETOOTH, 79,273 KM

SALE \$31,995

PRE-OWNED TRUCKS

2009 NISSAN ROGUE SL AWD



2.5L I-4 CYL, AUTOMATIC, AWD, BLUETOOTH, BOSE AUDIO SYSTEM, HEATED SEATS, ALLOY WHEELS 63,148 KM

SALE \$20,995

2008 KIA SPORTAGE



4 DOOR, LUXURY LEATHER, ROOF, AWD SUV, 2.7L V-6 CYL AUTOMATIC, 78,325 KM

SALE \$15,995

2008 LAND ROVER LR2 HSE



3.2L I-6 CYL, AWD, NAVIGATION, HEATED SEATS, PANORAMIC SUNROOF, LEATHER, BLUETOOTH 78,115 KM

SALE \$22,995

2008 FORD F-150 LARIAT CREW



AUTO, 5.4L V8 FLEX FUEL, MOONROOF, CD / MP3, LEATHER, HEATED SEATS, KEYLESS, AIR, ABS 93,740 KM

SALE \$23,995



LONGMAN'S MARKHAM KIA

1-877-803-1795
5396 Hwy. 7, Markham

WALMART CORRECTION NOTICE

On page 5 of the flyer distributed on July 15 the picture of the Next6 Tablet (#30143088) was incorrect. The correct picture is as follows:



We apologize for any inconvenience this may have caused.

WALMART CORRECTION NOTICE

The following items will not be available for our flyer effective July 8 - 14/11. Page 6 CoverGirl Eyelights, Get 1 Bonus Identical Product (#30144250/1/2/3...).

The cosmetic brush is not included. Page 7: The Mach3 5-Pack Cartridges with Bonus ProGlide Razor (#299506) will not be available. Mach3 5-Pack Cartridges (#260274) will be available at \$10 per pack.

We apologize for any inconvenience this may have caused.

PLEASE RECYCLE THIS NEWSPAPER

- 3M Scotchguard
- LOOSE RUGS
- BROADLOOM
- UPHOLSTERY

S

905-642-5111

Andy's 24 Hour Towing Ltd.

Serving Uxbridge & Area For Over 20 Years!

905-852-3447

235 Davis Dr., R.R.#3, Stouffville

Ballantrae Plaza Veterinary Clinic

Wishes to announce that
Dr. Karen Drewell

A 2007 Graduate of the Ontario Veterinary College has joined this veterinary practice group in order to cover extended office hours

New Patients
always welcome!

905 • 642 • 3349