

# Stouffville Sun-Tribune

THURSDAY, JUNE 30, 2011 ■ SERVING THE COMMUNITY OF WHITCHURCH-STOUFFVILLE ■ 24 PAGES/\$1 INCLUDING GST

Canadian Tire  
**STOUFFVILLE**  
**Misting Pond**  
**\$6<sup>99</sup>**  
**SAVE 86%**  
Reg: \$49.99  
43-9231

**EDITOR'S CHOICES**

## Our picks for 27th berry festival

Welcome to the Whitchurch-Stouffville Strawberry Festival, folks.

The 27th annual extravaganza, which opened last night with a concert at Stouffville United Church, continues through Sunday afternoon.

Most of the action is in or around Stouffville Memorial Park. For more details, go to [strawberryfestival.ca](http://strawberryfestival.ca)

Here are some of our choices for your things-to-do list this weekend:

- Eat. Starting with tonight's Stouffville Lions beef barbecue. Ballantrae Lions get into the act with their pancake breakfast Saturday.

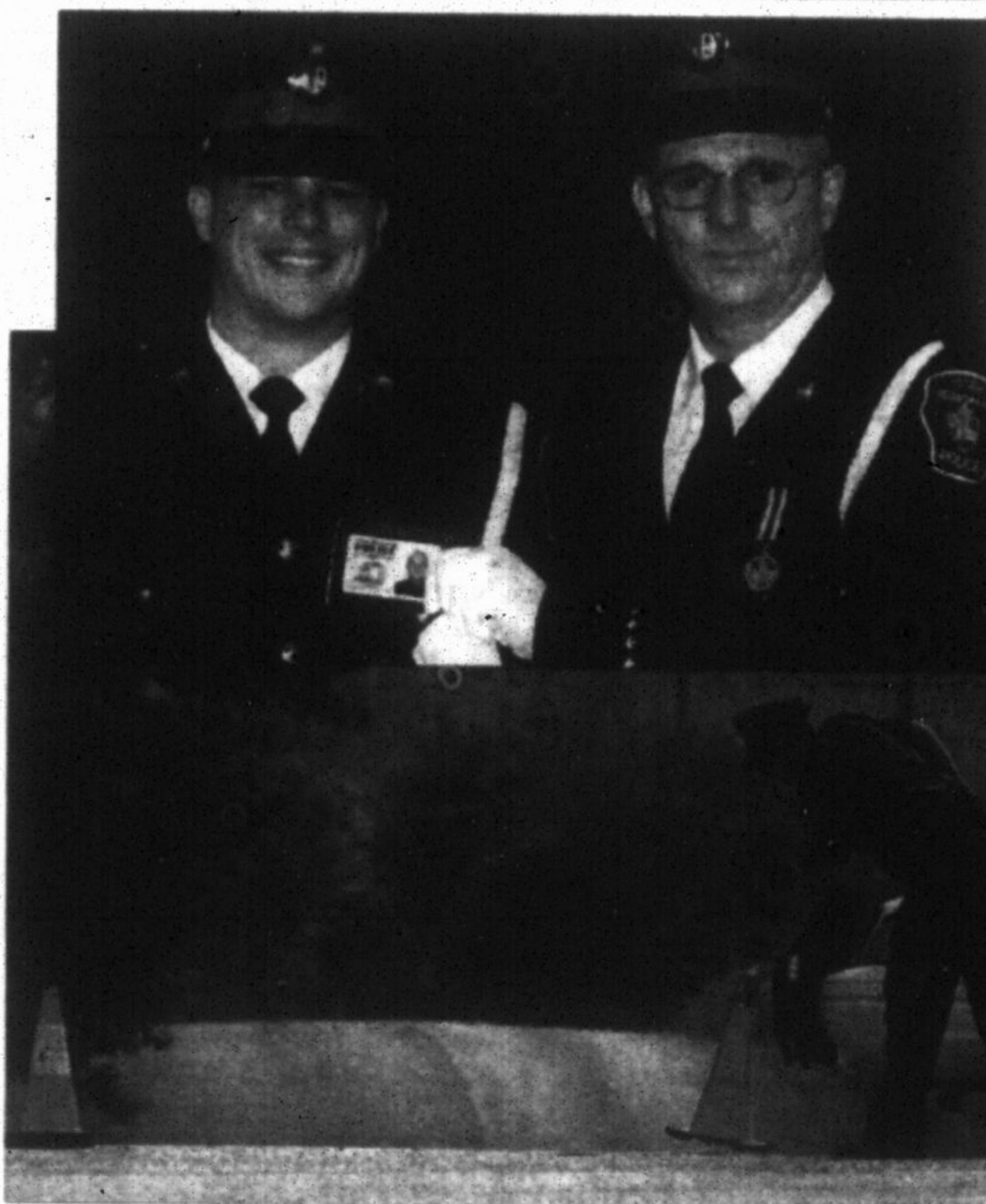
- Walk. Or at least try to, down Main Street Saturday. It will be bumper-to-bumper with people checking out more than 200 booths, offering up crafts to snacks.

- Take part. There are contests on the festival itinerary for everything from having freckles to making jam. One of our faves is tomorrow's dog contest. Woof. But, you can also decorate your bike, blow bubbles or spell words.

- Pray — and eat. End the weekend with the ecumenical church service. Then dig into the free grub at the strawberry social.

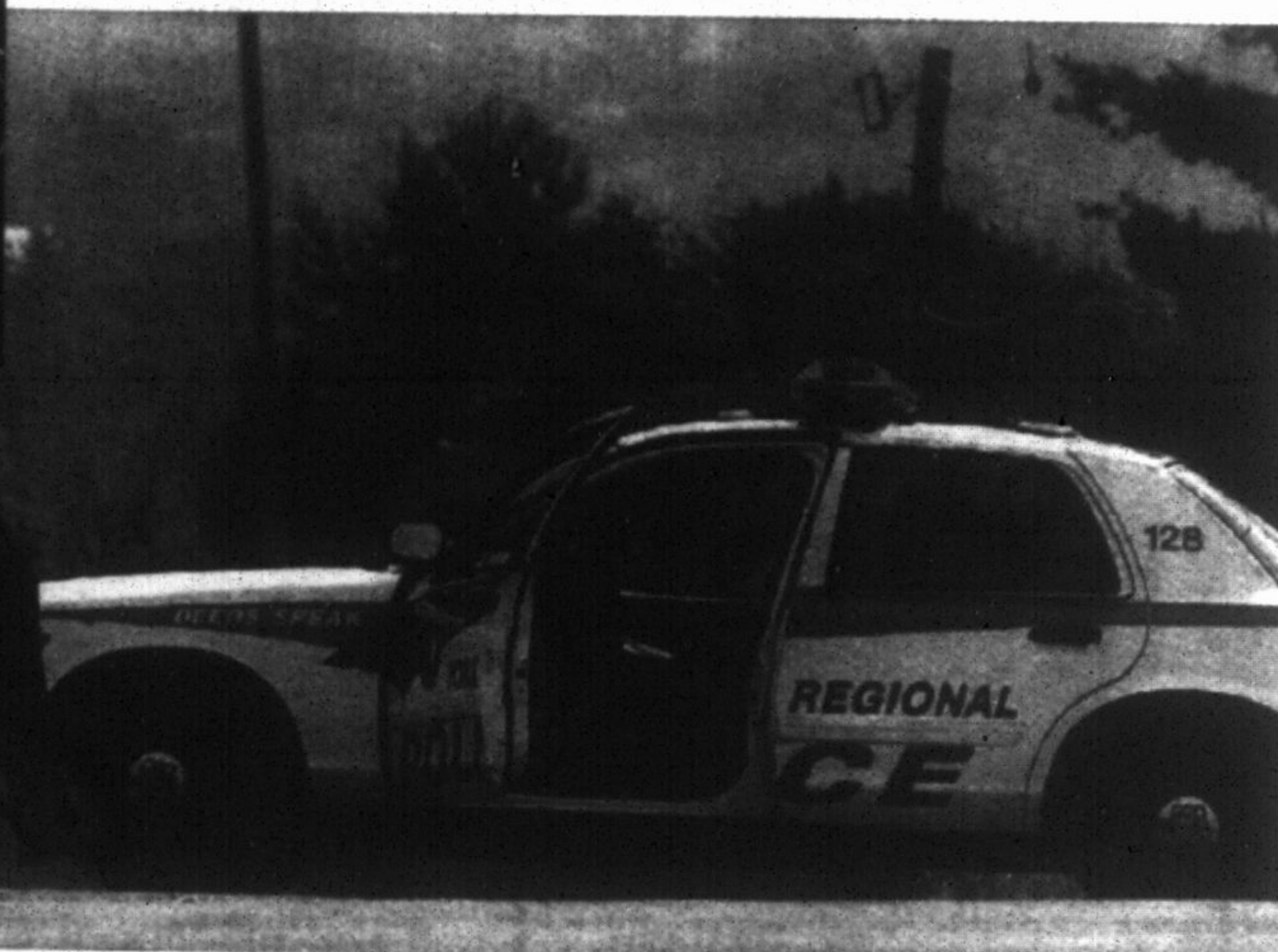
- Rest. Until next year.

— Jim Mason



## CONST. GARRETT STYLES, 1978-2011

Left, Const. Garrett Styles receives his badge in 2004 from his father, retired Staff Sgt. Garry Styles. Below, Const. Meaghan Mitchell places pylons, blocking access a site on Hwy. 48, just north of Whitchurch-Stouffville, where Const. Styles died while making a traffic stop Tuesday.



STAFF PHOTO/MIKE BARRETT

### HOSPITALIZED 15-YEAR-OLD CHARGED WITH FIRST-DEGREE MURDER

# Constable 'put life on line' for us

BY SANDRA BOLAN  
[sbolan@yrmg.com](mailto:sbolan@yrmg.com)

The two parking spots reserved for York Regional Police officers at the Main Street Community Policing Centre remained eerily empty yesterday afternoon.

In west-end Stouffville, at the Whitchurch-Stouffville fire station on Weldon Road, flags flew at half mast.

Flags were also lowered in front of Main Street's McDonald's and Southwire Canada buildings.

A 15-year-old boy has been charged with the first degree murder of Const. Garrett Styles, who died Tuesday morning after pulling over a 2005 Dodge Caravan with four occupants in it on Hwy. 48 just south of Herald Road, just north of the Whitchurch-Stouffville border,

*Thanks for doing a thankless job, officers/see Jim Mason's column on page 6.*

around 5 a.m.

Const. Styles was investigating the driver and was at the driver's side door when the vehicle accelerated. He was dragged approximately 300 metres before the vehi-

cle lost control and rolled over, pinning him beneath it.

Firefighters extricated Const. Styles and he was transported to Southlake Regional Health Centre by York Region EMS, where he succumbed to his injuries.

Three passengers in the van were not seriously injured and are co-operating with the ongoing

See **TRAFFIC**, page 20

## HAPPY CANADA DAY, STOUFFVILLE! ENJOY THE STRAWBERRY FESTIVAL

**THURSDAY & SATURDAY ONLY**

1.0ct CANADIAN DIAMOND  
**\$3,000 & WE PAY THE TAX**

**Barthau Jewellers**  
*Since 1947*

5758 Main St., Stouffville  
(LCBO & Shopper's Plaza)

**905-640-4646**

**GOING GREEN AT 410 AUTO**  
Hybrids • Electric • Gasoline • Diesel  
130 Sandford Dr., Unit 5 • 905-642-2888  
[www.410auto.com](http://www.410auto.com)

