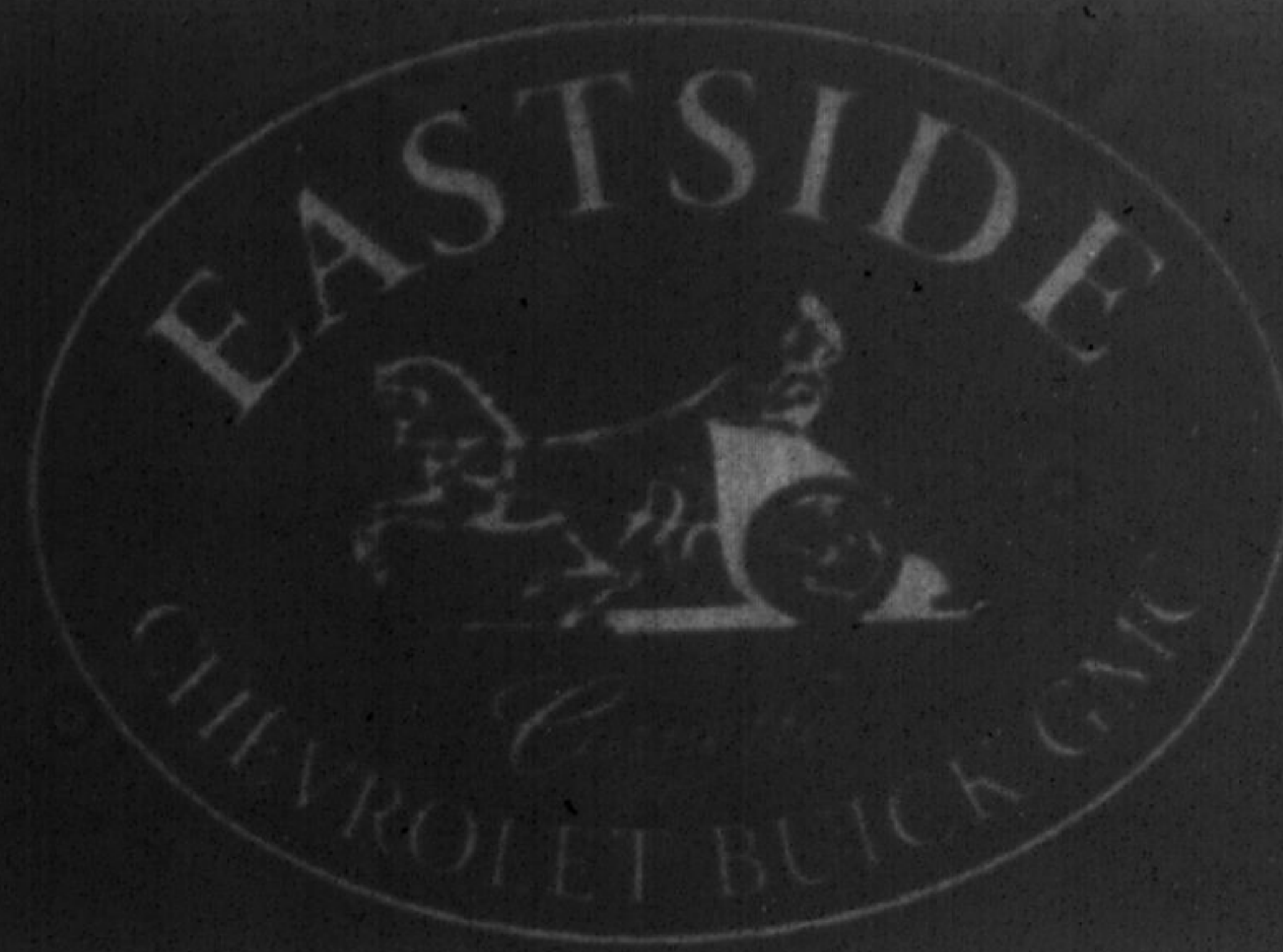


# Eastside Chevrolet Buick GMC



## 2011 Aveo LT - 5 Door

Auto, Air Cond., Power Windows & Locks, Keyless Entry.



St# BL123909

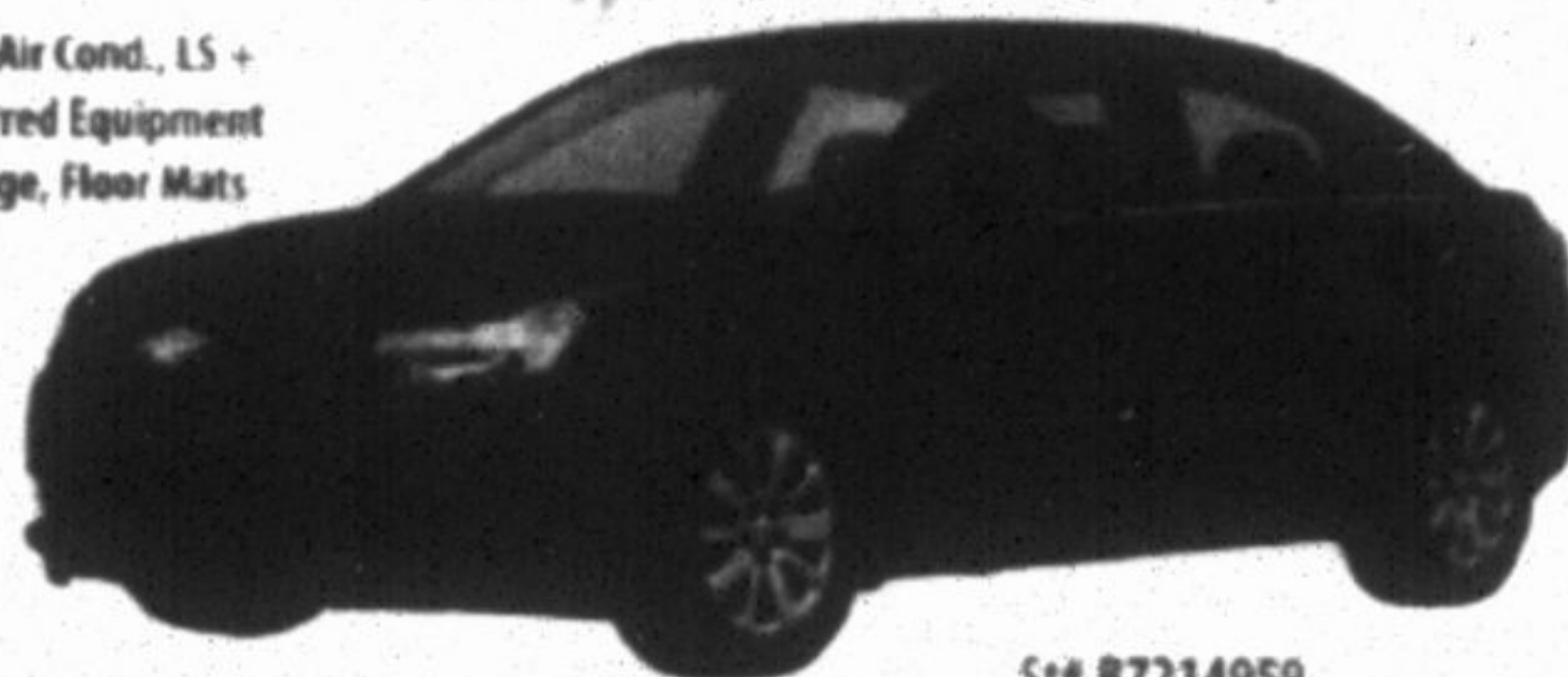
**\$129 @ 2.9%**, HST included  
BI-WEEKLY

LEASE FOR **\$199/mos.** x 60 mos. + HST  
\$1000 due on signing, 20,000km per year

**NOW ONLY \$16,888** PURCHASE PRICE

## 2011 Cruze LS+

Auto, Air Cond., LS + Preferred Equipment Package, Floor Mats



St# B7214959

**\$158 @ 4.45%**, HST included  
BI-WEEKLY

LEASE FOR **\$259/mos.** x 60 mos. + HST  
\$1000 due on signing, 20,000km per year

**NOW ONLY \$18,588** PURCHASE PRICE

## 2011 Malibu LS

Auto, air, power pkg. and more



St# BF162396

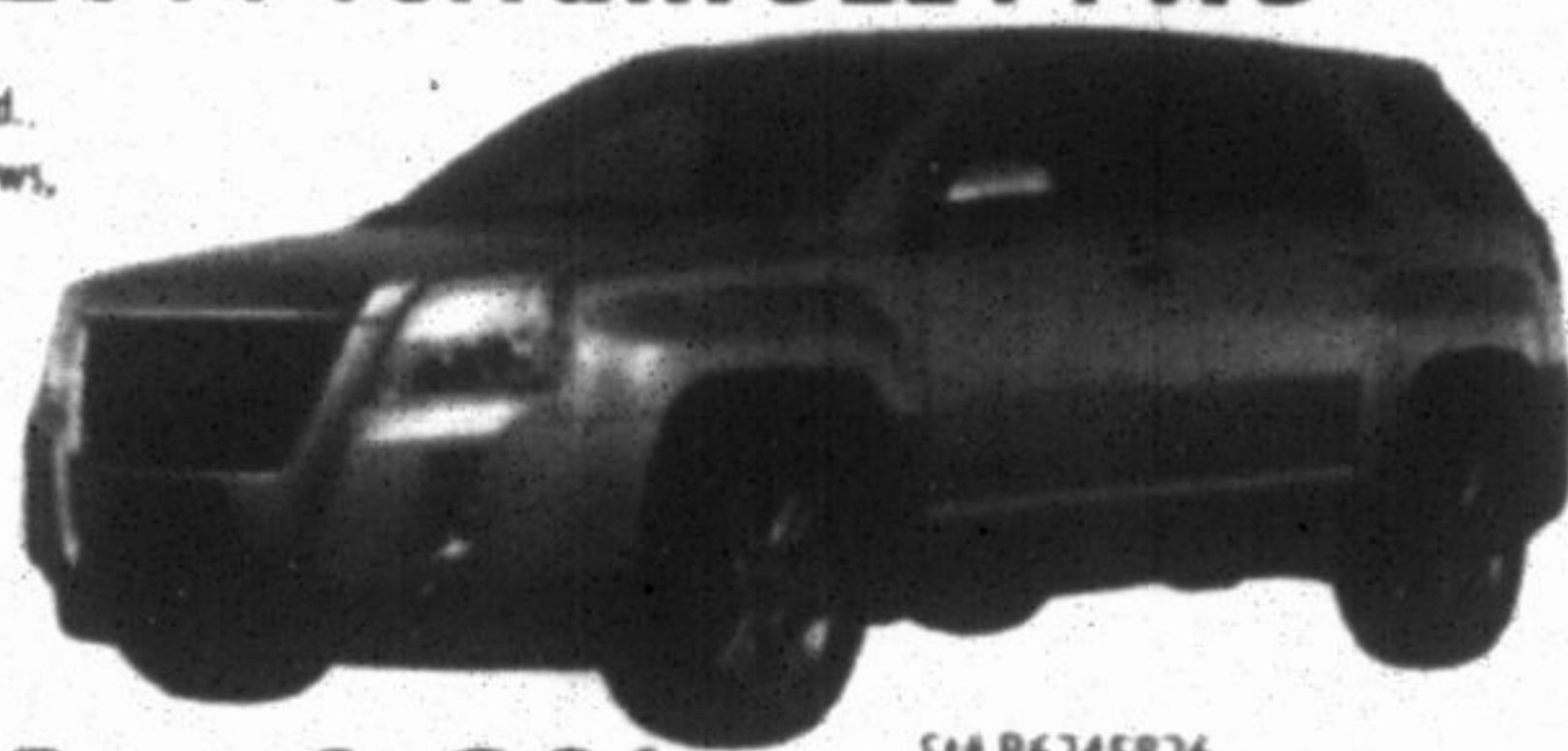
**\$248 @ 0%**, 48 Months HST included  
BI-WEEKLY

LEASE FOR **\$299/mos.** x 60 mos. + HST  
\$1000 due on signing, 20,000km per year

**NOW ONLY \$23,288** PURCHASE PRICE

## 2011 Terrain SLE1 FWD

Auto, Air Cond., Power Windows, Power Locks



St# B6245826

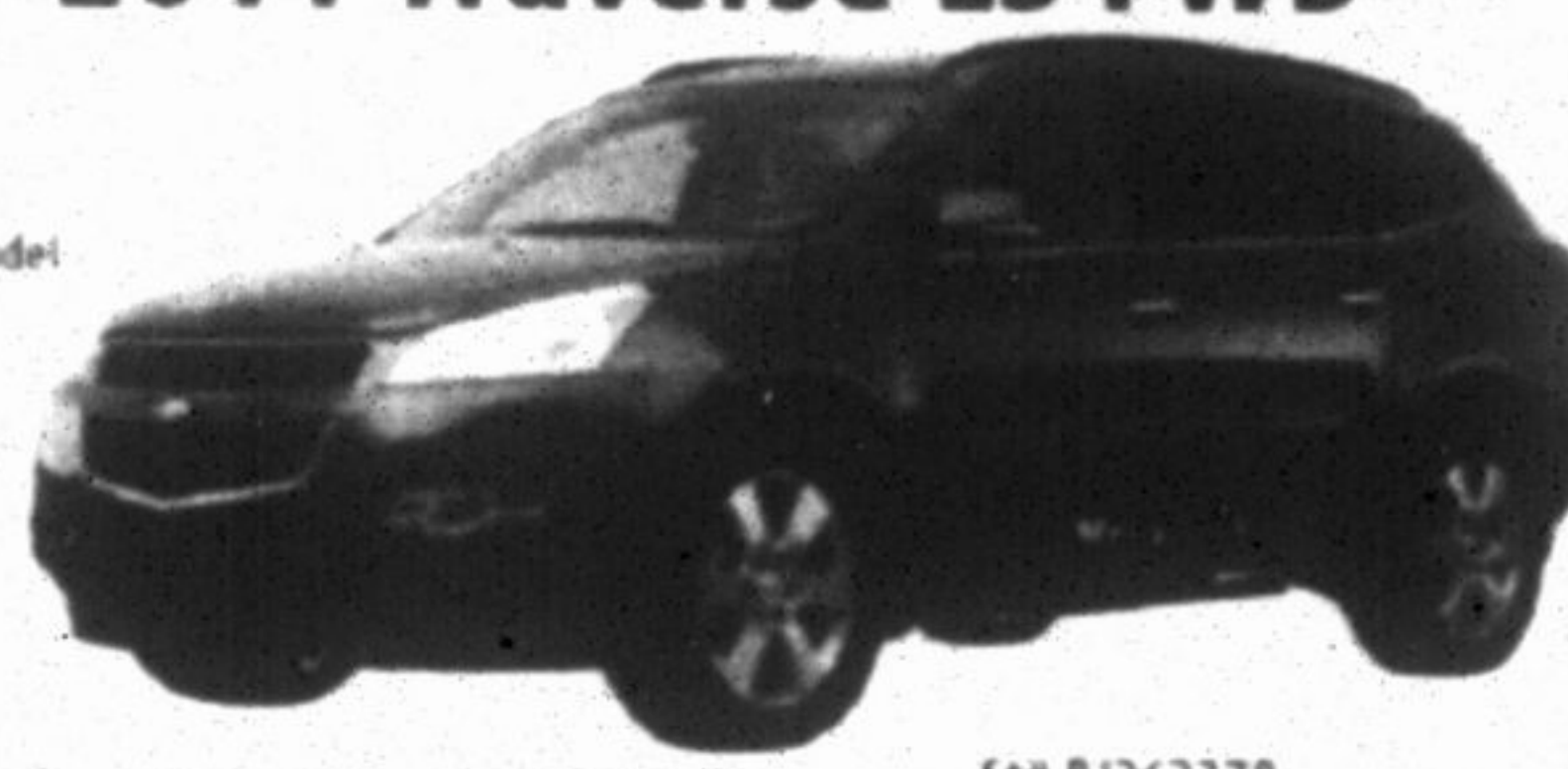
**\$214 @ 1.9%**, HST included  
BI-WEEKLY

LEASE FOR **\$399/mos.** x 48 mos. + HST  
\$2000 due on signing, 20,000km per year

**NOW ONLY \$27,707** PURCHASE PRICE

## 2011 Traverse LS FWD

1LS FWD Model



St# B1262378

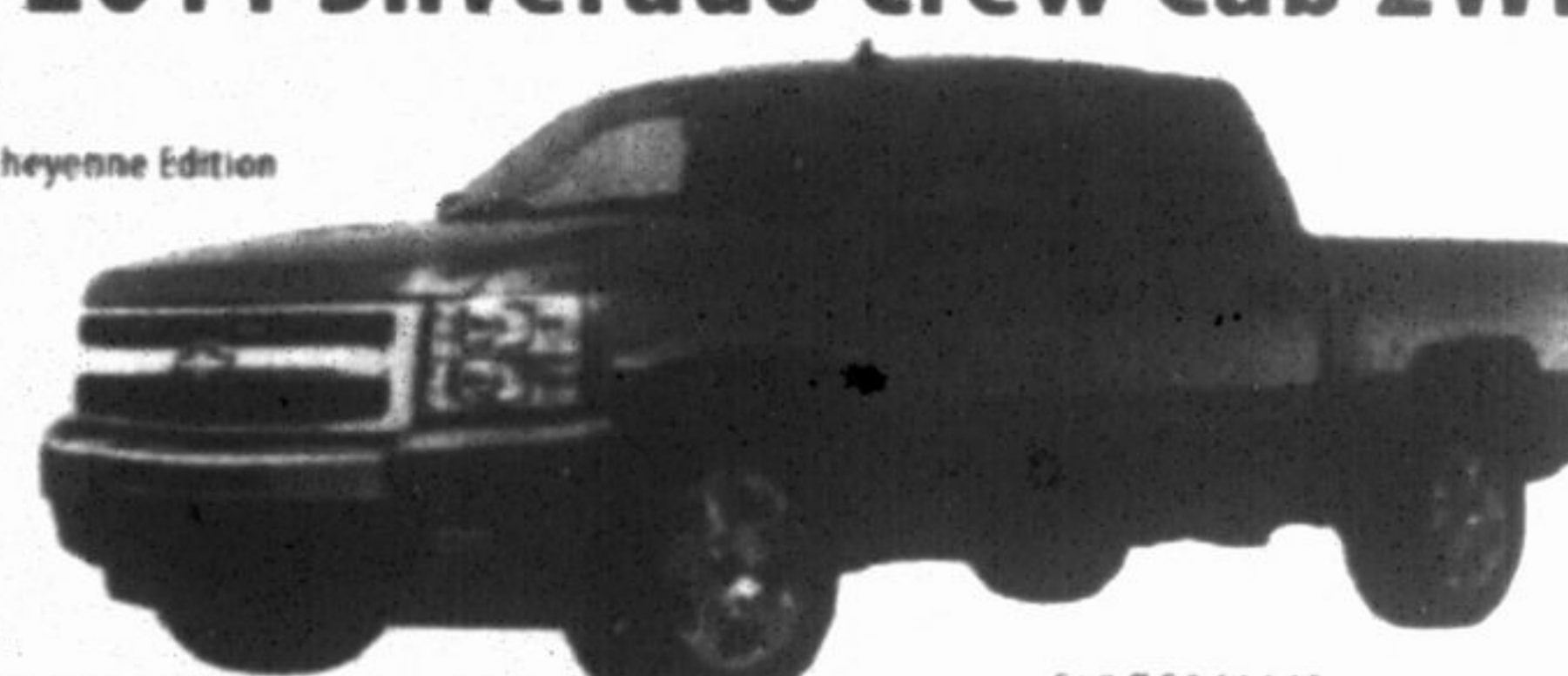
**\$246 @ 1.9%**, HST included  
BI-WEEKLY

LEASE FOR **\$468/mos.** x 48 mos. + HST  
\$2000 due on signing, 20,000km per year

**NOW ONLY \$31,257** PURCHASE PRICE

## 2011 Silverado Crew Cab 2WD

Cheyenne Edition



St# BG146643

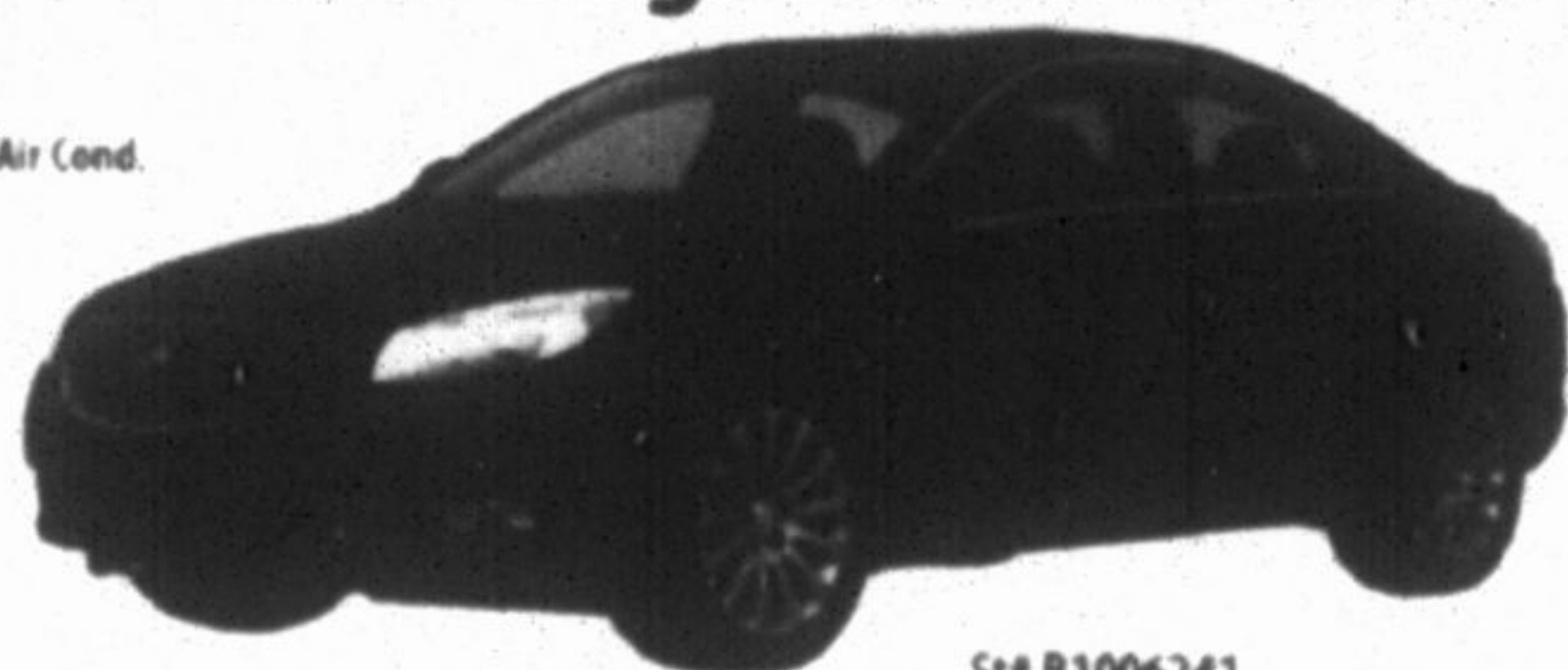
**\$228 @ 3%**, 72 months, HST included  
BI-WEEKLY

LEASE FOR **\$466/mos.** x 48 mos. + HST  
\$2000 due on signing, 20,000km per year

**NOW ONLY \$30,588** PURCHASE PRICE

## 2011 Buick Regal CXL 4 Dr Sedan

Auto, Air Cond.



St# B1006241

**\$258 @ 3.9%**, HST included  
BI-WEEKLY

LEASE FOR **\$478/mos.** x 48 mos. + HST  
\$1000 due on signing, 20,000km per year

**NOW ONLY \$31,323** PURCHASE PRICE

**Over 200 New Vehicles In-Stock  
GM LEASING IS BACK!**

RECEIVE A  
**\$250** **GAS CARD**

with a purchase of any new vehicle from Eastside Chevrolet

## 2011 Buick Lucerne CXL 1SA

Leather Appointed Seats, Heated Driver & Front Passenger Seats, Auto-Dimming Mirror



St# BU113693

**\$289 @ 4.99%**, 72 months, HST included  
BI-WEEKLY

LEASE FOR **\$300/mos.** x 48 mos. + HST  
\$2000 due on signing, 20,000km per year

**NOW ONLY \$34,688** PURCHASE PRICE

\$1000 due at signing for Aveo, Cruze, Malibu, Regal and Lucerne. \$2000 due on signing for Terrain, Traverse and Silverado. Prices include \$1450 freight, \$100 air tax, \$399 admin fee, 0.1% etching \$250, Ontario Tire Stewardship \$29.20, OMVIC \$5. All prices are plus HST and license and gas fee. Bi-weekly payments are based on 72 month term. Rates are posted per model. Vehicles may not be exactly as shown. Example financing \$20000 over 72 months @ 4.45% bi-weekly payment of \$146.32 with a cost of borrowing of \$2825.44

WE SPEAK YOUR LANGUAGE

Mandarin, Cantonese, Macedonian, Croatian, Serbian, Romanian, Hungarian, Italic, Arabic, Armenian, Russian, Greek, Hebrew, French, Portuguese, Spanish and English



**8435 Woodbine Ave., Markham**  
(Hwy #7 and Woodbine)  
**905-475-7373**  
Toronto Line **416-756-9712**



THE BEST COVERAGE IN CANADA  
**5 YEARS**  
**160,000 KM**

- POWERTRAIN LIMITED WARRANTY
- ROADSIDE ASSISTANCE
- COURTESY TRANSPORTATION

See our Complete Line up at [eastsidegm.ca](http://eastsidegm.ca)

