



TOWN OF
WHITCHURCH-STOUFFVILLE
celebrating 40 years

37 Sandiford Drive, 4th Floor

Stouffville, Ontario L4A 7X5

905-640-1900 or 905-895-2423

www.townofws.ca

Lebovic Leisure Centre 905-642-PLAY(7529) • Public Library 905-642-READ(7323) • Museum 905-727-8954 OR 1-888-290-0337

NOTICE OF COUNCIL MEETINGS



Council Chamber • 37 Sandiford Drive, 4th Floor

TUESDAY JUNE 7th

COUNCIL MEETING at 7:00 p.m.

TUESDAY JUNE 21st

COUNCIL MEETING at 3:00 p.m.

PUBLIC HEARING (if required) at 7:00 p.m.

NOTICES

**Proposed Amendment to the Sign By-law
Affecting Lands in Downtown Stouffville
Council Meeting - June 7th, 2011 7:00 pm**

Town Council at its meeting scheduled for **Tuesday June 7th, 2011**, commencing at **7:00 pm**, in the Council Chambers, Town Municipal Offices, will be considering a Staff Report and associated By-law to amend the Sign By-law affecting lands within Downtown Stouffville.

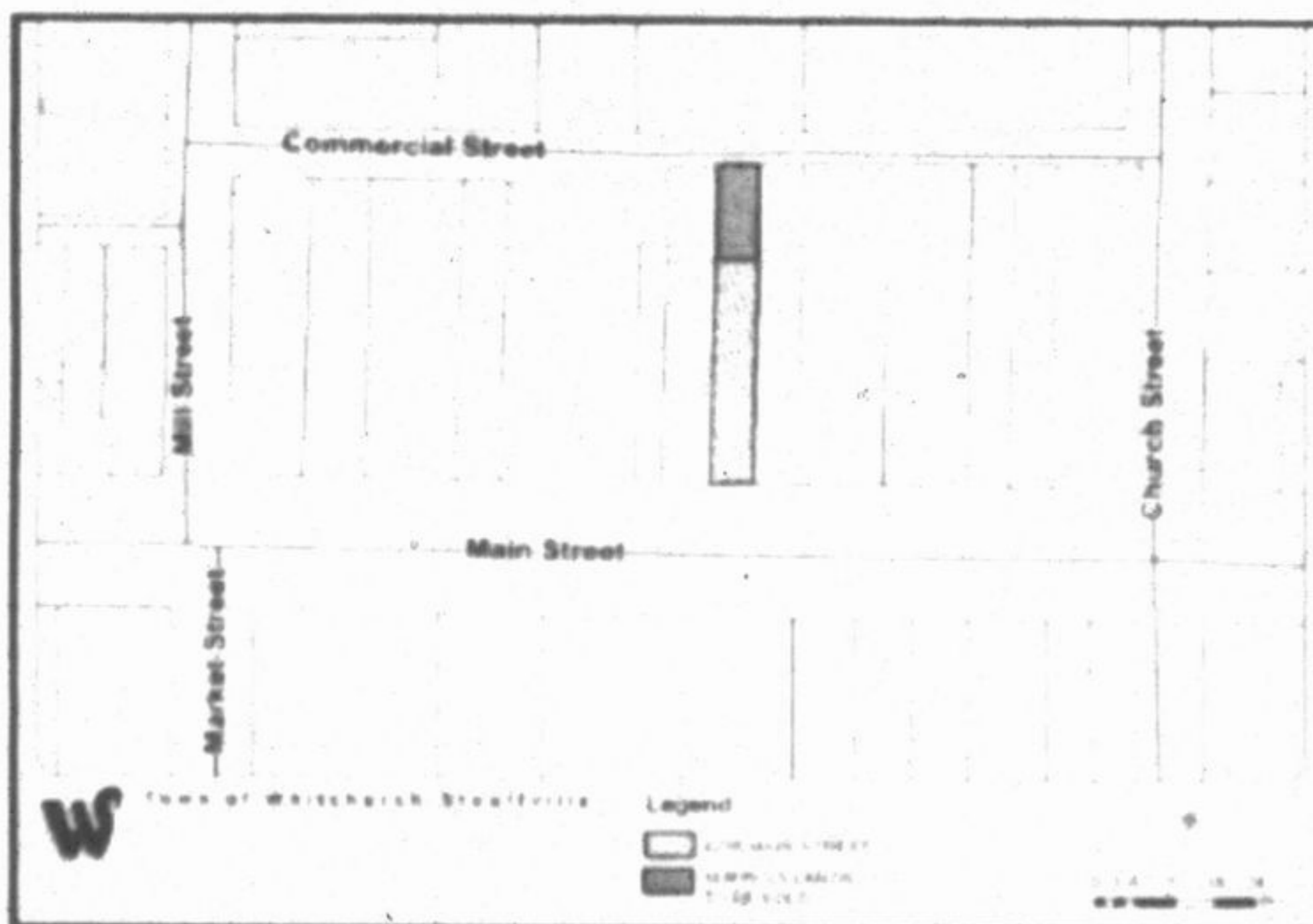
Interested members of the Public are welcome to speak to Council concerning the Staff Report and associated 'draft' Amendment to the Sign By-law. If you are not able to attend the Council Meeting, correspondence will be received by the Town Clerk up to the time of the Meeting.

Copies of the Staff Report and 'draft' By-law will be available for review as of 12 Noon on Thursday June 2nd, 2011 at the Clerk's Department, Town Municipal Offices or at the Whitchurch-Stouffville Public Library. The Staff Report and 'draft' By-law will be available for download from the Town's website [www.townofws.ca] - click on the 'Agendas, Minutes & By-laws' icon - follow the link to the June 7th Council Agenda.

For further information on the proposed Amendment to the Sign By-law affecting lands in Downtown Stouffville, please contact Andrew McNeely, Director of Planning & Building Services at 905-640-1910 or 905-895-5299 x270 or via email at andrew.mcneely@townofws.ca.

PROPOSED SALE OF PUBLIC LANDS

On June 7, 2011, Council will consider a staff report concerning the sale of approximately 86 864 square meters (935 square feet) of surplus property to the owner of the adjoining property located at 6296 Main Street, Stouffville (Part of Lot 13, Plan 70, designated as Parts 3,4,5,6,11 & 12, Plan 65R-25907).



The staff report on this matter will be available in the Clerk's Department by noon on June 2, 2011 and on the Town's web site.

NOTICES

**TAXI TARIFF BY-LAW 2011-089-LI
June 7, 2011 Council Meeting**

Council will be considering a Staff Report and associated By-law at its June 7th, 2011 meeting. The report proposes an increase to the fares charged by Taxis in the Town of Whitchurch-Stouffville. Copies of the report will be available for review at the Clerk's Department, Library and on the Town's website as of noon on June 2nd, 2011. For further information, contact the Licensing and Public Services Coordinator at ext 225.

**WATER DISTRIBUTION SYSTEMS
FLUSHING PROGRAM
COMMUNITIES OF BALLANTRAE /
MUSSELMAN LAKE AND STOUFFVILLE**

The Public Works Department reminds residents that it conducts a major watermain flushing program of the Town's water distribution systems twice annually.

The next event is scheduled to begin on or about **Monday May 16th, 2011** in the communities of Ballantrae/Musselman Lake and Stouffville and is expected to last for approximately three (3) weeks. The work is to be conducted daily, Monday to Friday, between 9:00 am and 3:30 pm.

For further information, please see our website at www.townofws.ca or contact Public Works at 905-640-1910 or 905-895-5299 ext. 306.

**REQUESTS FOR QUOTATIONS AND
PROPOSALS**

WS-RFQ-11-23

**SUPPLY & DELIVERY OF CULVERT PIPE
Closing June 1st, 2011 - 3:00 pm local time**

Questions or inquiries can be directed to Denis Chartrand, Manager of Operations at 905-640-1126 ext. 262 or denis.chartrand@townofws.ca.

WS-RFP-11-25

Terms of Reference

**Ballantrae - Musselman Lake Environs
Secondary Plan / Highway 48 Corridor Review**

The deadline for proposal submission is 3:00 PM local time on Wednesday June 1, 2011.

Any questions regarding this Request for Proposal shall be directed to Alan Drozd, Manager of Planning Services 905-640-1910 or 905-895-5299 ext. 320, or alan.drozd@townofws.ca.

For further information on the above, please see our website at <http://www.townofws.com/bids.asp>.

ATTENTION LOCAL BUSINESSES

The York Region Employment Survey is underway! Information collected is used to for Planning and Economic Development purposes including business retention, expansion, and future planning to help make WS a better place to live work and play. Please fill in the survey when you are visited by York Region over the next few weeks. Thank you!

RECRUITMENT

The Town of Whitchurch-Stouffville is currently recruiting for the following positions:

MANAGER OF CUSTOMER SERVICES

MANAGER, REVENUE AND TAXATION SERVICES

For further information, please see our website at <http://www.townofws.com/jobs.asp>

NOTICES

FOCUSING ON SERVICE EXCELLENCE

Have you completed the Community Survey yet?

The Town of Whitchurch-Stouffville is undertaking a 2011 Community Survey to assess community satisfaction with Town services, identify top of mind resident issues and address priority areas for improvement.

To ensure all residents have an opportunity to provide input, the survey period has been extended to June 3, 2011 from the original deadline of May 27th. The Telephone Survey is in progress.

The Town requests your feedback on municipal services and suggestions for enhancing our performance. The 2011 survey monitors progress since the 2008 survey, and covers other topics such as input for updating the Corporate Strategic Plan. Your input is vital.

You may be randomly selected to participate in the telephone survey that will take about 15 minutes. The survey is being conducted by an independent research firm called DPRAC Canada. Individual responses will be kept confidential and aggregate survey highlights will be made available to the public by July.

If you are not contacted, you have other options to participate...

- The survey is available through a link on the Town's website at www.townofws.ca

- Alternatively, you may pick up a survey at one of the locations below and return your feedback using the enclosed postage-paid envelope.

Municipal Office

37 Sandiford Drive, 4th Floor,

Clerks Department

(Monday to Friday, 8:30a.m. - 4:30p.m.)

Lebovic Leisure Centre

30 Burkholder Street

(Monday to Thursday, 6:00a.m. - 10:00p.m.)

Friday, 6:00a.m. - 9:00p.m.; Saturday & Sunday, 8:00a.m. - 5:00p.m.)

Please return the completed survey by June 3, 2011

For more information on both the 2011 and 2008 surveys, please access the Town website and click the 2011 Community Survey link on the home page. You may also contact Gary Sumner, Manager, HR & Strategic Initiatives, Town of Whitchurch-Stouffville, (905) 640-1910.

UPCOMING EVENTS

NEWMARKET'S LOW-COST RABIES CLINIC

Hollingsworth Arena, 35 Patterson Avenue

Sunday, May 29 10 a.m. to 2 p.m.

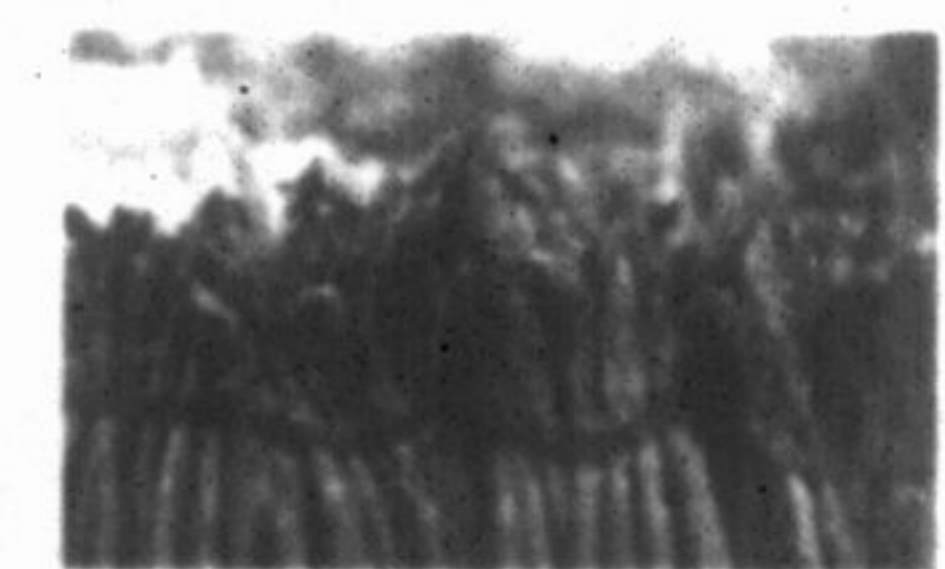
Cats must be in a carrier and dogs must be leashed, cost is \$15 cash only per animal. Notice to Pit Bull Owners - any pit bull terrier, Staffordshire terrier, American pit bull terrier or a dog that has the appearance and physical characteristics that are substantially similar to the dogs referred to must also be muzzled.

DOWNTOWN STOUFFVILLE

FARMERS' MARKET

2:00pm - 7:00pm

Every Thursday on Park Dr.



Whitchurch-Stouffville Operations Centre

5061 Bethesda Road, Stouffville • SATURDAY MAY 28th, 2011 • 9:00 am to 1:00 pm

Official Unveiling of Dedication Plaque at 10:00. Come out and see our new operations centre!

Guided tours of the operations centre, equipment displays, draws for rain barrels, tree seedling and compostable bag give-aways, hamburgers and hot dogs and more!

