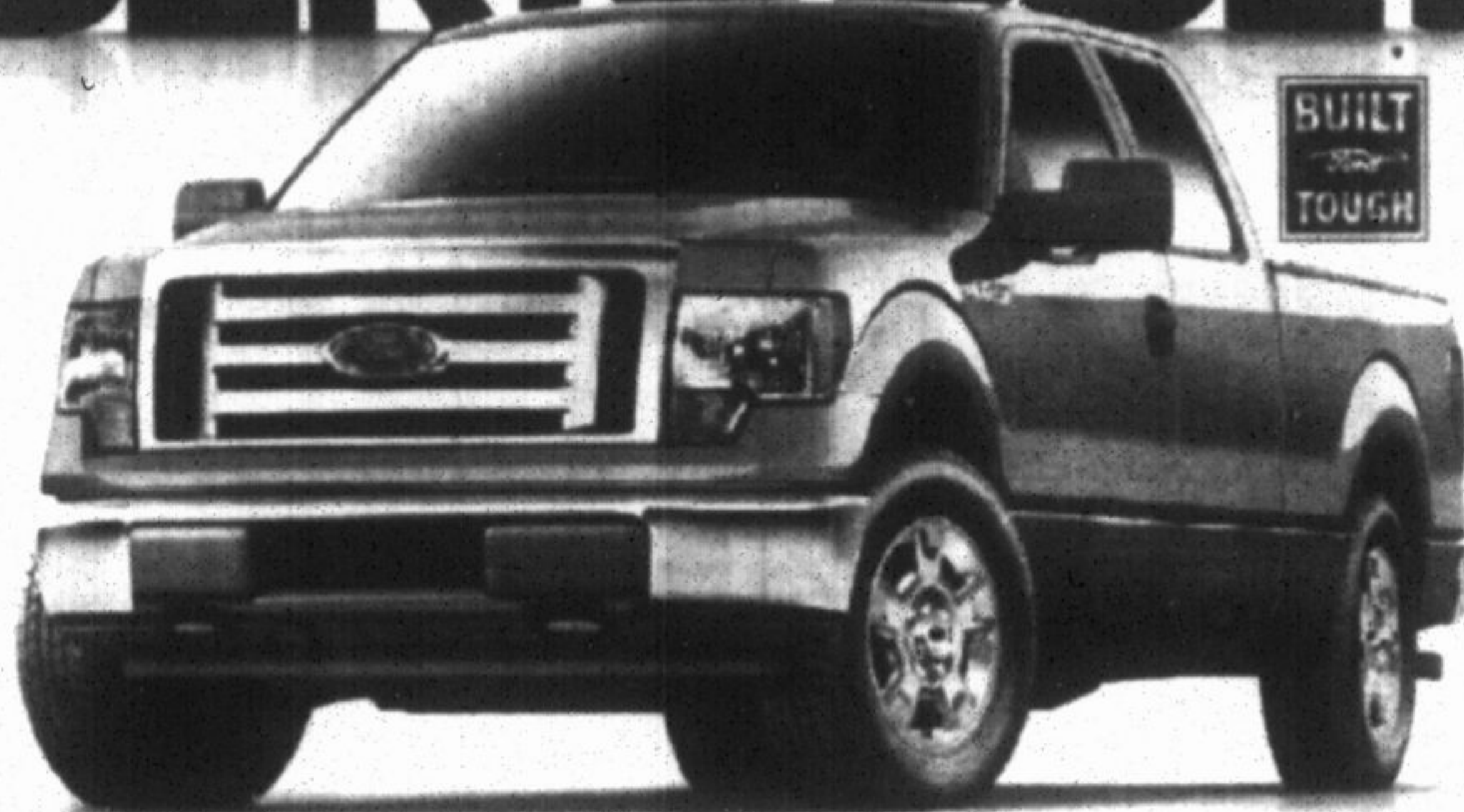


Ford offers more vehicles with  
**BEST-IN-CLASS FUEL ECONOMY**  
 than any other brand.

**GO FURTHER FOR LESS**

2011 F-150.  
**MOST FUEL EFFICIENT PICK-UP.  
 SERIOUSLY.**



2011 F-150 SUPERCAB XLT

Own for Only  
**\$25,479\***  
 Offer includes \$6,500 Manufacturer Rebate and excludes taxes.  
 + Get \$500 Ford Credit Cash\*\*

**8.9L/100km 32 MPG HWY\***  
**12.8L/100km 22 MPG CITY\***

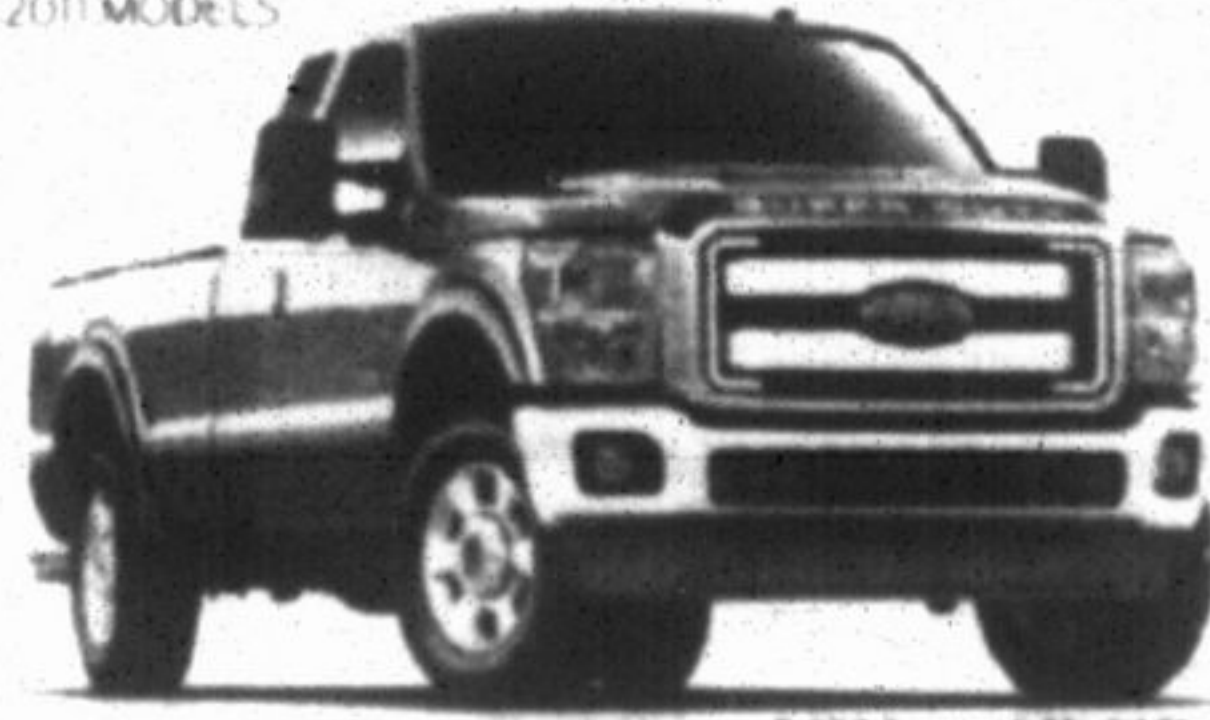
Now, not only will you go further, so will your money.

Manufacturer Rebates up to  
**\$7000\*\*** + **\$1000\***  
Eligible Costco members receive



2011 RANGER SUPERCAB SPORT

Own For Only  
**\$15,479\***  
 Offer includes \$6,000 Manufacturer Rebate and excludes taxes.  
**RANGER FEL DELIVERS AN IMPRESSIVE 37 MPG\***  
**7.7L/100km 37 MPG HWY\***  
**10.0L/100km 28 MPG CITY\***



2011 SUPER DUTY REGULAR CAB

Starting From  
**\$25,999\***  
 Offer includes \$7,000 Manufacturer Rebate and excludes taxes.  
 Factory order may be required.  
**BEST-IN-CLASS FUEL ECONOMY\***  
**BEST-IN-CLASS PAYLOAD & TOWING\***

\*MSRP. Excludes destination, freight, taxes, title, license, and dealer fees. \*\*Manufacturer rebate requires purchase of new vehicle. \*\*Offer may vary by region. ©2011 Ford Motor Company. All rights reserved.

Visit your Ontario Ford Store or [ontarioford.ca](http://ontarioford.ca) today and GO FURTHER FOR LESS.



Drive one.  
[ontarioford.ca](http://ontarioford.ca)

# your PLANNER

- MONDAY MAY 23**  
**FIRST FIREWORKS**  
 The inaugural Ballantrae Family Fireworks display begins at dusk in Ballantrae Community Park, 5592 Aurora Rd., between Hwy 48 and Ninth Line. Free admission. Updates at [www.philbannon.ca](http://www.philbannon.ca)
- FRIDAY MAY 27**  
**COWADUNGA**  
 Dottie the Cow will star at Glad Park Public School's fun fair from 4 to 8 p.m. Games, rides, crafts, food, music and dancing.
- FRIDAY MAY 27**  
**DEAL 'EM**  
 Ballantrae Lions host a fun euchre fundraiser from 6:30 to 11 p.m. at the Ballantrae Community Centre, 5592 Aurora Rd. Light refreshments. Tickets \$5 from 905-640-1930.
- SATURDAY MAY 28**  
**PLANT 'EM**  
 Stouffville Garden Club is holding a plant sale from 9 a.m. to noon at Parkview Gazebo, Weldon Road, across from Notfalls.
- MONDAY MAY 30**  
**SOUP FOR YOU**  
 Silver Jubilee 55-plus Club, Main and Market streets, hosts a soup lunch at noon. Entertainment by Jack Garson. Admission \$7. All seniors welcome.
- SATURDAY JUNE 4**  
**STEP INSIDE**  
 Doors Open Whitchurch-Stouffville is on from 10 a.m. to 4 p.m. Spend the day exploring 12 heritage sites. Free of charge. For more go to [www.doorsopenws.ca](http://www.doorsopenws.ca)
- MONDAY JUNE 6**  
**EAT, DRINK, BE...**  
 The sixth annual Ballantrae Food and Wine Festival is on from 6:30 to 9:30 p.m. at the Ballantrae Golf and Country Club. Go to [www.philbannon.ca](http://www.philbannon.ca)

For more community events, visit [yorkregion.com](http://yorkregion.com) and click on POP, personal online planner.

To add an event to this listing, e-mail Jim Mason at [jmason@yrmg.com](mailto:jmason@yrmg.com). Event organizers can also register with POP at [yorkregion.com](http://yorkregion.com) to have events listed free online.

## WALMART CORRECTION NOTICE

For our flyer effective May 13 - 19/11  
 Page 13: Tracy and Raven Ladies' Sandals and Page 18: LG Blu-ray Home Theatre-In-A-Box (#30091199) will not be available.

We apologize for any inconvenience this may have caused.

MSRP. Excludes destination, freight, taxes, title, license, and dealer fees. \*\*Manufacturer rebate requires purchase of new vehicle. \*\*Offer may vary by region. ©2011 Ford Motor Company. All rights reserved.