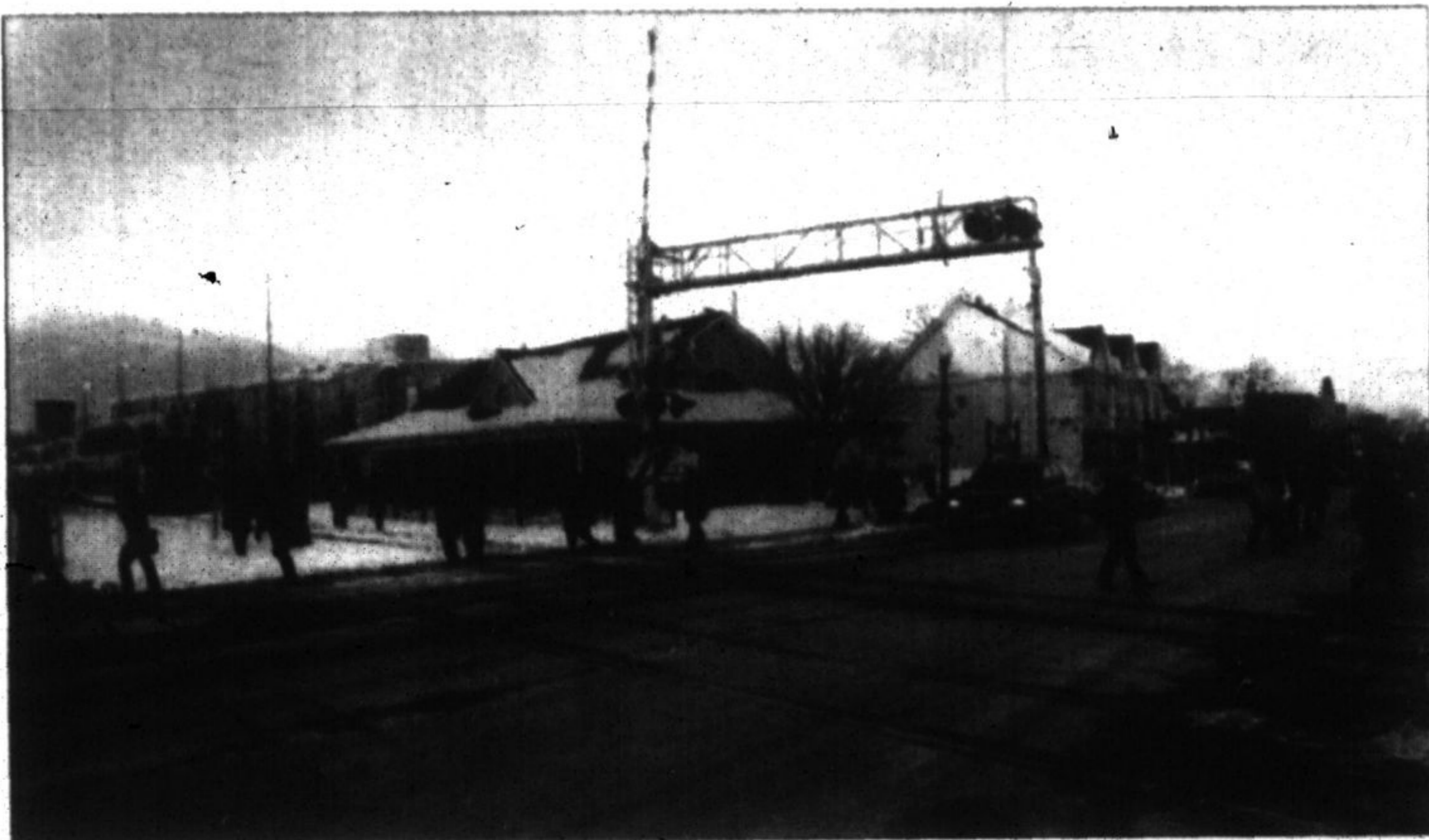


COMMUTING: Train riders, business owners petition council

# Mayor wants GO to help with Main St. station crossing



SUN-TRIBUNE FILE PHOTO

A petition is asking town council to make crossing Main Street at the Stouffville Station safer.

BY SANDRA BOLAN  
sbolan@yrmg.com

Mayor Wayne Emmerson wants a meeting between GO Transit, council and the public to take place in an effort to solve the pedestrian problem.

On Tuesday, council approved \$50,000 for curb extensions adjacent to the Main Street station, which will help to reduce the crossing distance and provide improved visibility for pedestrians and motorists. However, the solution may not be that simple.

"I want to flesh this out. It could be a long decision," Mr. Emmerson said, adding GO Transit has to be a part of the solution. "They've helped a lot of other municipalities that have the same problem."

Regular GO train rider and Stouffville resident Grace Griffiths does not want curb extensions, she wants a signal light to help riders cross Main Street safely.

"As council and mayor, you're responsible for the safety of our citizens," she said Tuesday.

Ms Griffiths also came armed with a petition that had 166 signatures on it from residents, riders and area businesses in favour of a signalled crossing.

"To put another light on Main Street, I'd be railroaded out of town," Mr. Emmerson said.

As a short-term solution, Mr. Emmerson tossed out the idea of using crossing guards.

"I think it's a great idea," Councillor Rob Hargrave said.

"I wonder what grown-ups would think of being crossed by a crossing guard," Mr. Emmerson joked.

## PACE HOPES TO ERECT SIX-STORY BUILDING

If curb extensions do become the final solution, their timeline for construction may have to wait to coincide with future Main Street projects.


One is a proposal by PACE Savings and Credit Union, which wants to demolish its current building just east of the train station, to create a six- or seven-storey condo complex with the credit union on the main floor, according to Mr. Emmerson.

In 2012, the town is also planning to resurface Main Street between Ninth Line and Edward Street.

The second phase is scheduled for 2013 and encompasses Stouffer Street to Tenth Line. The third phase, also planned for 2013 is broken into two parts: Edward Street to Church Street, then Church Street to Stouffer Street.

However, a crossing guard is not an option, according to Paul Whitehouse, director of public works for the Town of Whitchurch-Stouffville, who added they are only allowed to be used in school crossing zones.

"We would be leading edge," Mr. Emmerson joked.



**Pat Robinson INC.**  
Trustee in Bankruptcy

*Call for a free personal discussion:*

- Help with creditor problems
- Proposal to creditors
- Personal & Business Bankruptcy

**Aurora (Head Office)** 15105 Yonge St. #201 (at Church) 905-727-2577  
**Richmond Hill** 9555 Yonge St. #401 (at Wedrick) 905-508-9493  
**Sutton West** 100 High St. (at Middle) 905-722-3170

**Toll Free for any location**  
1-877-727-2577

Email: Pat@PatRobinson.com Web: www.PatRobinson.com

PAT ROBINSON TRUSTEE



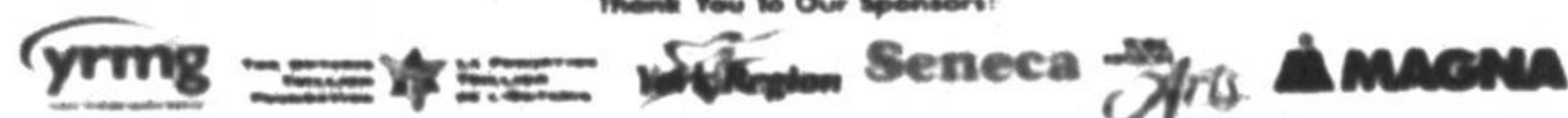
Inspiring Minds • New Ideas • Seminars • Networking • Celebrate our Culture  
 Get ready to be inspired by brilliant minds, engage in creative discussion, network, meet your municipality and learn from experts on a variety of hot topics through practical seminars.

### Meet these presenters and many more!

 <b>Dr. Richard Florida</b> renowned author of The Rise of the Creative Class	 <b>Ann Ghemah</b> celebrated CBC Radio Host of Q	 <b>Dr. Greg Bealer</b> Founder of Aurora, ON	 <b>Dr. Barbara Sellers-Young</b> Dean of Faculty of Fine Arts, York University	 <b>Dan Taylor</b> Economic Developer near Office, Prince Edward County	 <b>Doug Lindholm</b> Director of Economic Strategy & Tourism Risk Strategy	 <b>Catherine Campbell</b> Regional Advisor Ministry of Tourism & Culture
 <b>Patrick Gossage</b> Artist, Author Media Artist	 <b>Emeline Ishard</b> Artist, Author Media Artist	 <b>Bruce Grant</b> Artist, Author Media Artist	 <b>Pro Babay</b> Artist, Author Media Artist	 <b>Marsha Thibodeau</b> Artist, Author Media Artist	 <b>John Falley</b> Artist, Author Media Artist	 <b>Kevin Wagoner</b> Artist, Author Media Artist

**Also presenting:**  
 Herbert Pryke, Brandon McGowan, Linda Thomas, Jennifer Steele, Frank Viti, Kristina Abramson, Rhonda Fudge, Corina Jand, Maralynn Hammond, Nancy Rodi, Judi McIntyre, Joan Sax, Heather Fullerton, Ingo Lubbeck, Kathleen Sharpe, Grant Rosen, Sofia Andros, Adrian Dilani, Joshua Barnhill, Eric Lorraine, El Lukowitz, Steven Foster, Michael Rowe, Amara Khurshid, Sharnai Mark, Shrut Joshi, George St. Kille, Krishna Mahla, Downs Andrews, Alan Drenfeldt, Teresa Cheung, Bonnie Craig, Joey Arango, Geoff Butler, John Switzer, Sean Cabana, Shawn Shapiro, Lesley Ann Marovich, Sybilie Foster, Regmeister, Aaron Lightstone

Thank You to Our Sponsors:



HYUNDAI

## SMART RUNS IN THE FAMILY.

Get the smartest offers this month with Hyundai.



2011 TUCSON L

OWN IT FOR ONLY **\$172\*** AT **1.9%** WITH **\$0**  
 BI-WEEKLY APR/72 MOS DOWN PAYMENT

HIGHWAY 6.5L/100KM - 4.3 MPG\* DELIVERY, DESTINATION & FEES INCLUDED

# Stouffville

67 Automall Boulevard (Millard & Hwy. 18),  
 905-888-7777 • stouffvillehyundai.com

facebook.com/StouffvilleHyundai



TM The Hyundai names, logo, product names, feature names, images and slogans are trademarks owned by Hyundai Motor Canada Ltd. Finance: This vehicle is financed by Hyundai Financial Services based on new 2011 Tucson L with an annual finance rate of 1.9% for 72 months. \* Starting price for 2011 Tucson L Superdiesel \$21,995. Excludes tax, destination charges of \$1,700, fees, license charges and applicable taxes (including HST) are included. Registration, insurance and license fees are excluded. \*\* Finance available for a limited time and subject to change or cancellation without notice. See dealer for complete details. Inventory is limited. Dealer price may be less than MSRP. \$172/BI-WEEKLY, 1.9% APR/72 MOS are based on Finance Canada's fuel consumption ratings. Actual fuel efficiency may vary based on driving conditions and the actual load being carried. Fuel economy figures are used for comparison purposes only. Fuel economy figures are used for comparison purposes only. Actual fuel efficiency may vary based on driving conditions and the actual load being carried. See your dealer for eligible vehicles and full details of the Graduate Return Program. This program is subject to the Limited Warranty coverage covers most vehicle components against defects in workmanship under normal use and maintenance conditions.

Early bird registration is now open until February 28th. One day pass for the conference is \$129. Stouffville Sun-Tribune, York Region Arts Council members receive a \$30 discount. For more information, please visit [www.artsexposed.ca](http://www.artsexposed.ca)