



Town of WHITCHURCH-STOUFFVILLE

37 Sandiford Drive, 4th Floor
Stouffville, Ontario L4A 7X5
905-640-1900 or 905-895-2423
www.townofws.com

Lebovic Leisure Centre 905-642-PLAY(7529) • Public Library 905-642-READ(7323) • Museum 905-727-8954 OR 1-888-290-0337

NOTICE OF COUNCIL MEETINGS



Council Chamber • 37 Sandiford Drive, 4th Floor

TUESDAY MARCH 8TH AT 7:00 p.m.
COUNCIL MEETING

TUESDAY MARCH 29TH
ALTERNATE PUBLIC HEARING AT 7:00 p.m.
(if required)

NOTICES

LOAD RESTRICTIONS

Load restrictions will be enforced on all roads which are posted under the jurisdiction of the Town of Whitchurch-Stouffville from:

MARCH 1ST TO APRIL 30TH INCLUSIVE

Vehicle loads shall be restricted to five (5) tonnes per axle.

For further information, please contact the Public Works Department at 905-640-1910 or 905-895-5299 ext. 306.



GARBAGE & RECYCLING COLLECTION

The regular number of bags or containers placed out for garbage collection shall not exceed **THREE (3)** for each dwelling unit, commercial establishment or industrial establishment.

Garbage stickers may be purchased for each additional individual bag or container in excess of the allowable limit for a fee of \$2.00 (including tax) per bag or container.

Stickers shall be affixed to disposable plastic bags (around the neck of the bag) or on the garbage within a container in a clearly visible location and readily seen upon removal of the containers' lid.

Stickers may be purchased at the Town Offices (Treasury Department) during regular business hours or at the following convenience stores:

- B.J.'s Gift & Variety, 6416 Main Street, Stouffville
- Sunny's Variety, 14635 Ninth Line, Musselman's Lake
- Ballantrae Variety, 2 Felcher Boulevard, Ballantrae
- Petro-Canada Station (Wesley Corners), 15288 Woodbine Avenue, Vardorf

Please have green bins, blue boxes and garbage curbside by 7:00 am on the day of the collection.

NOTICES

SUMMER COMPANY-OPEN FOR 2011

Summer Company 2011 is OPEN for applications! Do you have a family member or know any students 15 to 29 years of age who require financial and mentoring assistance to start a summer business? Summer Company provides hands-on business training, mentoring and financial support of up to \$1,500 to put toward start-up costs and up to \$1,500 upon successful completion of the program. Go to www.ontario.ca/summercompany for more information. Application deadline is May 9, 2011 but act now as space is limited.

RECRUITMENT

SPRING/ SUMMER 2011

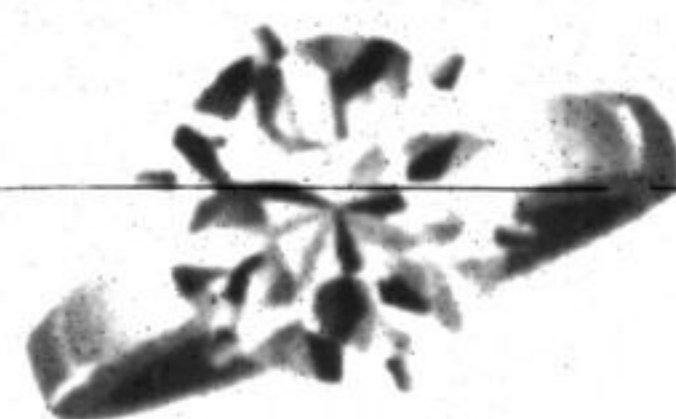
The Town is now accepting applications for various positions within its 2011 Spring / Summer operation. Hours of work per week may vary.

- Summer Youth Program Supervisor
- Summer Youth Program Assistant
- Day Camp Counselor
- Day Camp Supervisor
- Day Camp Special Needs Counselor
- Volunteer Opportunities available with Day Camp and Aquatics
- Aquatics Instructor / Lifeguard
- Deck Attendant / Cashier
- Curatorial and Programming Assistant - Whitchurch-Stouffville Museum
- Exhibit and Programming Assistant - Whitchurch-Stouffville Museum
- Parks Labourer (seasonal contract 8 months)
- Parks Labourer (part time summer)
- Facility Labourer

For further information on these positions, please see our website at www.townofws.com/jobs.asp or email leisure.services@townofws.ca. Please forward your resume in confidence, identifying position applied for, by February 25 to:

Executive Assistant, Human Resources Services,
Town of Whitchurch-Stouffville,
37 Sandiford Dr., 4th Floor • Stouffville, Ontario, L4A 7X5
Fax: 905-640-9259
or Email: chris.paule@townofws.ca

CIVIL MARRIAGES



Looking for a low-key, low cost alternative to a church wedding? The Town of Whitchurch-Stouffville offers civil marriage ceremonies in our Council Chambers on Fridays between 9:00 a.m. and 4:30 p.m. Our officiants have been trained to assist you in creating a ceremony that is tailored to your preferences. We'll meet with you and spend time discussing the details that will make your special day both relaxing and memorable.

With today's trend toward destination weddings, we strongly recommend that you consider a simple ceremony here at the Town prior to your trip to ensure that your marriage is properly registered with the Province of Ontario.

For more information and to view sample ceremony scripts, visit our website at http://www.townofws.com/civil_marriages.asp or give us a call at 905-640-1910 x225. Staff would be honoured to share in the joy and excitement of planning your ceremony.

UPCOMING EVENTS

MARCH BREAK PROGRAMS AT THE LIBRARY



Magic, Movies, and Music!!!
March Break Programs
Visit the Library now for tickets!
or call 905-642-READ(7323)

MARCH BREAK PROGRAMS

ATLAS SPORTS CAMP**

Eastridge Church (7 - 14 yrs)
Full day camp from 9:00 a.m. - 4:00 p.m.

FILM CAMP

Lebovic Centre for Arts and Entertainment
(6 - 9 yrs) & (10 - 14 yrs)
Full day camps 9:00 a.m. - 4:00 p.m.

HOCKEY CAMP

Stouffville Arena (6 - 12 yrs)
Full day from 8:30 a.m. - 5:30 p.m. and
Half day camps from 8:30 a.m. - 12:30 p.m. or 1:30 p.m. - 5:30 p.m.

WILLOWGROVE CAMP**

11737 McCowan Road (6 - 12 yrs)
Full day camp available from 9:00 a.m. - 4:00 p.m.

YOUTH/ADULT CAMP 18+

(available for 14 - 17 yrs for those who qualify)
Full day camp, 9:30 a.m. - 3:30 p.m. 1:1
Fee will apply for those requiring intense support.
Contact Cheri Evans, 905-884-9110 ext 640

THE AMAZING RACE - STOUFFVILLE EDITION

Youth (13+ years)
March 17, 1:00 p.m. - 4:00 p.m.
Pre-register at the Leisure Centre

JUNIOR POWERSKATING CLINIC

Stouffville Arena (5 - 7 yrs) & (8 - 10 yrs)
available from 5:30 p.m. - 6:30 p.m.

SKATING

Stouffville Arena
Monday - Friday 2:00 p.m. - 5:00 p.m.
Tuesday Paul Calandra MP Free Skate
Wednesday Boston Pizza Free skate

LEISURE SWIMS

Lebovic Leisure Centre
Tuesday, Thursday, Friday 1:05 p.m. - 2:30 p.m.
Tim Hortons Free swim 1:05 p.m. - 3:00 p.m.
Monday March 14 and Wednesday March 16

**Before and after care available

Register at the Lebovic Leisure Centre, online at www.townofws.ca/WSPLAY. Online or call 905-642-PLAY (7529) for details.

THE TOWN OF WHITCHURCH-STOUFFVILLE IS PARTNERING TO PRESENT:

Cashing In Through Grain Marketing:

Add to Your Business Bottom Line

Thursday, March 24, 2011

9:15 a.m. - 4:30 p.m.

Manvers Arena & Community Centre

697 Hwy 7A (at Hwy 35), Bethany

Cost: \$33.90/person (\$30.00 + \$3.90 HST)

More information: kbaxter@citykawarthlakes.on.ca

1-888-822-2225, Ext. 1270



NO OVERNIGHT PARKING

DECEMBER 1ST TO MARCH 31ST
INCLUSIVE

Parking rules ensure that our streets are clear to accommodate traffic flow, emergency vehicles and snowplows.

Parking is prohibited on Town streets between 2:00 am and 6:00 am.

Vehicles parked on the street during this period will receive a fine of \$ 50.00

Please do not park so as to interfere with snow plowing; cars parked on town streets that have not yet been serviced may be subject to a fine.

Do not park in such a manner to cause a vehicle to overhang onto the roadway or the sidewalk.



DOG TAGS - BUY NOW AND SAVE!

Last call for *reduced rate dog tags!* The rate is \$26/tag if purchased on or before February 28th. Effective March 1st the rate is \$36.00 per tag. Tags are available at the Town office or at Town-authorized outlets and vet clinics.

For locations, see <http://www.townofws.com/dogtags.asp>.

For inquiries, contact the Licensing and Public Services Coordinator at x225.