

Latcham Amped Up for new show

Robert Hengeveld's solo exhibition Amped Up is now showing at the Latcham Gallery.

Amped Up is a tongue-in-cheek look at our relationship with nature and our penchant for replacing the natural with man-made objects.

Mr. Hengeveld will be on hand for a public reception Jan. 15 at the gallery from 1 to 3 p.m.

Mr. Hengeveld is a University of Victoria and OCAD graduate. In 2006, he was the artist-in-residence at the Banff Centre for the Arts in Alberta.

The show runs until Feb. 12. Latcham Gallery is at 6240 Main St.

For more information, go to www.latchamgallery.ca

Haggis on menu

You can celebrate the life of Robbie Burns next Saturday.

And try some haggis. Stouffville's St. James Presbyterian Church is hosting its annual Burns supper at the Parkview Village auditorium on Ninth Line.

Burns fans will be served up a meal and an evening of Scottish song, dance and poetry.

Ticket are \$16 for adults and free for children under 12.

Call 905-640-3151 or 905-640-2481 for more information.

ENVIRONMENT: Post-Walkerton notices to residents

Development stressing Stouffville's water

BY SANDRA BOLAN
sbolan@yrmg.com

► Go to www.ctcswp.ca for more information.

Whitchurch-Stouffville's water is moderately stressed.

That is what the CTC Source Protection Committee discovered last year during its assessment of the area's water.

"It could be partially from development, it could be from climate change, it could be any number of factors," said Susan Self, chairperson of the CTC Source Protection Committee. "We know that Stouffville is destined for growth, so in planning and protecting the water, you not only have to protect it for today, but plan for it tomorrow."

Hearing Whitchurch-Stouffville's water levels are somewhat stressed is not news to Tom Parry, the town's director of engineering and capital projects.

He also noted because former farmlands are being paved over, the amount of water returned to the aquifer is lessened.

"I tend to look at the data on the aquifer levels and it shows they are down," Mr. Parry said.

It was 10 years ago when seven people died and 2,500 became ill from a contaminated town water system after cow manure washed into Walkerton's water system following heavy rains.

While residents mourned their loved ones, the Ontario government convened an inquiry led by the Supreme Court of Ontario's Justice Dennis O'Connor.

Two years later, a pair of reports were released, the second of which looked at water safety across the province. The report also made recommendations to prevent another Walkerton.

As part of the recommendations, a number of source water protection committees were created throughout the province.

The CTC is currently wrapping up the second of its three-phase source water protection plan for Whitchurch-Stouffville.

The first phase was the creation of reference terms. The second phase is the assessment report.

"That is purely scientific analysis of the

conditions," Ms Self said.

As part of that research, letters went out to a number of residents living within the Wellhead Protection Area of the Stouffville Wellfield last September.

The purpose of the letter, according to Ms Self, was to bring an awareness of what the CTC was doing, but to also educate homeowners on what they could do to help protect the water.

For people living within close proximity to the wells, things that may constitute a significant threat to drinking water include oil/gasoline tank storage, septic systems as well as manure or chemical storage.

Recipients of the letter were also asked to contact the CTC or attend an open house meeting in order for the committee to better understand past, present and future land uses in the affected areas.

"This is the critical piece of it. This is the source work," Ms Self said. "We get extra information from the people who live in the area."

In October, Stouffville-area resident Tom Winters, who received a CTC letter, attended one of the committee's meetings.

"We might be affecting them and they might be affecting us," Mr. Winters said of the information he gained by attending the information session. "I think it was leaning more towards we might be affecting them."

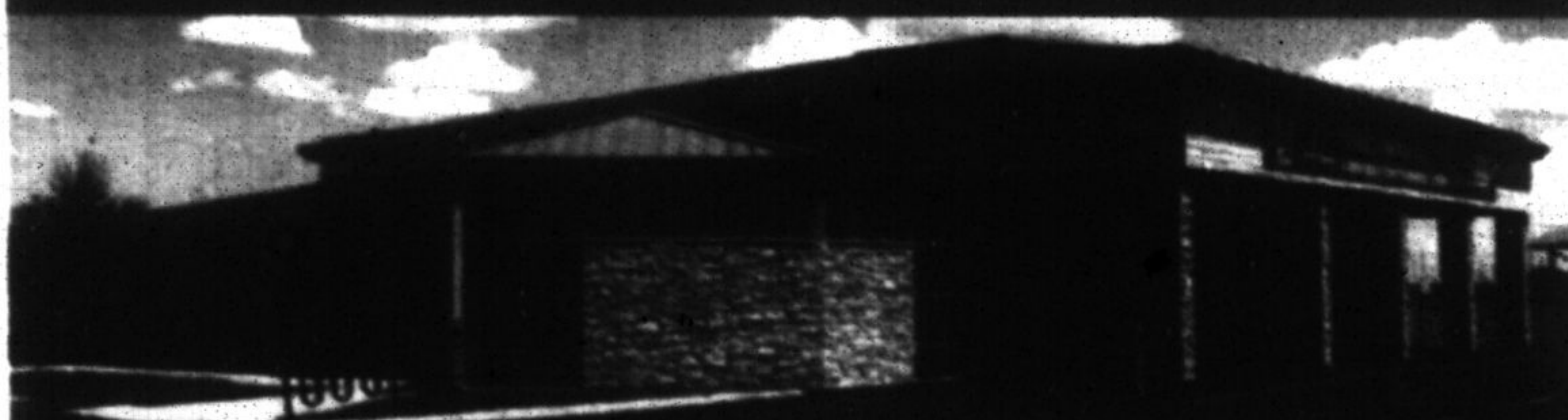
According to Mr. Winters, attendees were also informed that some business owners and residents may have to test their wells and septic systems and potentially replace them.

Once the assessment report is complete and approved by the Ontario Ministry of the Environment, the CTC will move onto the final phase, the actual source water protection plan, which are "policies that will mitigate existing threats on the landscape and prevent them from happening in the future," Ms Self said.

With files from Torstar News Service

Recycle Your Unwanted Items!

MCCLEARY COURT
Community Environmental Centre



A convenient location for York Region residents to drop off a wide range of items for reuse, recycling and disposal.

Materials accepted include:

REUSABLE GOODS

- Clothing
- Books, CDs & DVDs
- Paintings & mirrors
- Windows, doors & cabinetry
- Plumbing & lighting fixtures

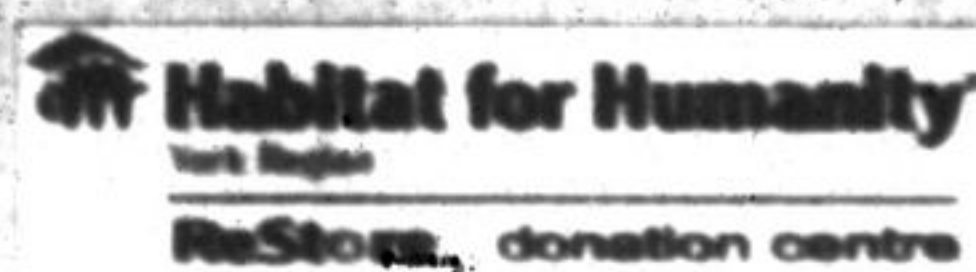
RECYCLABLES

- Small household batteries
- Energy efficient light bulbs
- Shredded paper
- Electronics
- Blue Box recyclables

BULKY RECYCLABLES

- Styrofoam
- Drywall
- Clean fill
- Scrap metal
- Non-treated lumber

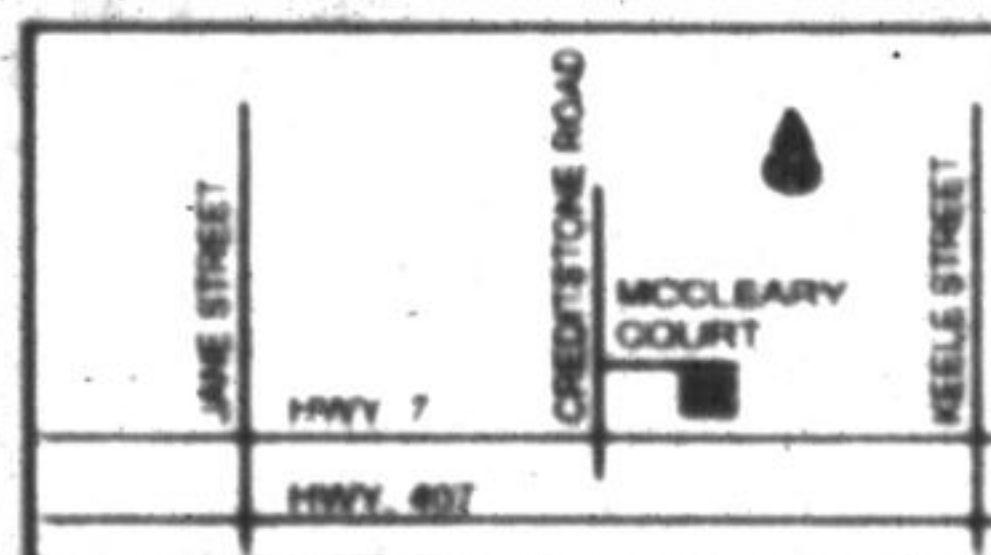
Yard Waste, Household Hazardous Waste and Green Bin organics are not accepted at this location.



HOURS: THURSDAY TO MONDAY - 9:30 a.m. to 4:30 p.m.

**McCleary Court
Community Environmental Centre**

730 McCleary Court (at Hwy 7 & Creditstone Road)
City of Vaughan



For more information, please contact York Region at 1-877-464-9675 or visit www.york.ca/waste

WE HAVE EMPLOYERS WITH JOBS! 70% of our clients will get hired.

RESUME & COVER LETTER HELP

DAILY JOB POSTINGS FOR YORK REGION & GTA

INTERVIEW QUESTIONS & PRACTICE

37 Sandiford Drive | Stouffville, ON | Suite 211
CALL 905 640-2252 VISIT www.yorkworks.ca



The Employment Ontario project program of service is funded by the Ontario government.

