

# your PLANNER

TUESDAY  
JANUARY

11

## SKATE NIGHT

You can take part in the Stouffville Adult Skating Group's weekly session at the Stouffville Arena at 7:15 p.m. Admission is \$6 at the door.

SATURDAY  
JANUARY

15

## HAGGIS, ANYONE?

St. James Presbyterian Church holds its annual Robbie Burns' supper in the auditorium of Parkview Village in Stouffville. For tickets and more information, call 905-640-3151 or 905-640-2481.

SATURDAY  
JANUARY

15

## FOLK FEST

Stouffville's Jim Priebe presents a sneak preview of Toronto's ninth annual Winterfolk Festival at The Earl of Whitchurch at 8 p.m. For more information go to [www.abetterworld.ca](http://www.abetterworld.ca)

For more community events, visit [yorkregion.com](http://yorkregion.com) and click on POP, personal online planner. To add an event to this listing, e-mail Jim Mason at [jmason@yrmg.com](mailto:jmason@yrmg.com). Event organizers can also register with POP at [yorkregion.com](http://yorkregion.com) to have events listed free online.

### UPCOMING PROFESSIONAL SERIES EVENTS!



A MASTERFUL FINGERSTYLE GUITARIST - WHO PLAYS WHOLE NOTE  
**FOLK SERIES**  
**ANDY SHEPPARD**  
FRIDAY, JANUARY 21 / 8PM  
\$35 regular / \$18 student



WINNER OF 4 JUNO AWARDS - BEST CHILDREN'S ALBUM  
**FAMILY SERIES**  
**JACK GRUNSKY**  
SUNDAY, JANUARY 30 / 2PM  
\$20 regular / \$10 student



WINNER OF 2 NATIONAL JAZZ AWARDS!  
**JAZZ SERIES**  
**LAILA BIALI**  
FRIDAY, FEBRUARY 11 / 8PM  
\$35 regular / \$18 student



WORLD CLASS CONCERTS IN DOWNTOWN STOUFFVILLE  
Call (905) 640-2322 or visit [www.nineteenonthePark.ca](http://www.nineteenonthePark.ca)

COMING UP: Desserts N Learn group effort

# Survival Networking introduces new series

BY SANDRA BOLAN  
[sbolan@yrmg.com](mailto:sbolan@yrmg.com)

How many times have you gone to an event to make new business contacts but ended up spending all your time chatting with people you have known for years?

We all know engaging strangers in a conversation is akin to having a root canal without the laughing gas. But in order to succeed and grow a business, it has to be done.

### ENGAGING STRANGERS

"You know how to do that when you're kids, where do we lose that as adults?" said Mardi Taylor, executive director of the Whitchurch-Stouffville Chamber of Commerce. "It's an opportunity. When you walk into a room of 45 people, that can be a room of 40 contacts."

As an organization that hosts a number of networking functions, the chamber decided it was time to show people how to do it right.

However, chamber executives knew they could not do this on their own and reached out to two other local organizations.

The chamber, yorkworks and the Town of Whitchurch-Stouffville are presenting Survival Networking Jan. 17. It is the first workshop in the new Desserts N Learn series.

"We're leveraging the strengths and resources of each other ... and producing something together better than individually," said Rebecca Mustard, economic development officer for the Town of Whitchurch-Stouffville.

Added Ms Taylor: "The town wants to grow a strong business community and you do that by providing the information they need."

This, however, will not be just a regular workshop with someone at the front telling you how to do it. Participants are expected to get out of their seats and be involved.

"We wanted to differentiate the workshops you would get from other partnerships," Ms Mustard said.

The workshop will cover such topics as how to introduce yourself and describe your company clearly and succinctly; how to remember names, faces and occupations; how to remember what the other person said; how to disengage from a conversation so you can meet other contacts; and what to do with all those business cards jammed into your pocket at the end of the night.

### THREE ORGANIZATIONS

"Once you meet somebody, it's not the end of it. It's a process," said Karen Cashin, job developer for yorkworks and workshop facilitator. "(Relationship building) is a time thing. You have to put some effort into it."

The workshop takes place at the Lebovic Centre for Arts and Entertainment - Nineteen on the Park from 6 to 7:30 p.m. The cost is \$25 for chamber members and \$30 for non-members. Dessert, coffee and tea will be served.

To register, call 905-642-4227 or e-mail [chamber@whitchurchstouffville.ca](mailto:chamber@whitchurchstouffville.ca)

## Whitchurch-Stouffville Minor Hockey Association

### Town Hall Meeting

**When:** Monday, January 10, 7:30pm

**Where:** Nineteen on the Park, 19 Civic Avenue, Stouffville

**Who Should Attend:** Minor hockey parents and team officials

#### What's It About:

The Ontario Minor Hockey Association has recently announced a number of proposed changes to regulations re: player movement and residency which could have significant implications for Stouffville players and the programs offered by the WSMHA. These proposals are scheduled to be ratified by a Special Meeting of OMHA member associations on January 23.

The primary objectives of the Town Hall Meeting are to:

- update Stouffville hockey parents and volunteers re: the proposed changes.
- discuss the potential implications to Stouffville players and the WSMHA.
- provide delegates to the OMHA Special Meeting with some direction as to the proposed changes.
- consider WSMHA options based on the outcome of the OMHA Special Meeting.

The Town Hall Meeting will also represent an opportunity for attendees to raise other minor hockey-related topics and to:

- provide the Board with their thoughts and recommendations.
- obtain answers from Board members on specific issues.

Whitchurch-Stouffville Minor  
Hockey Association  
PO Box 976  
Stouffville, ON  
L4A 8A1  
905-642-2835

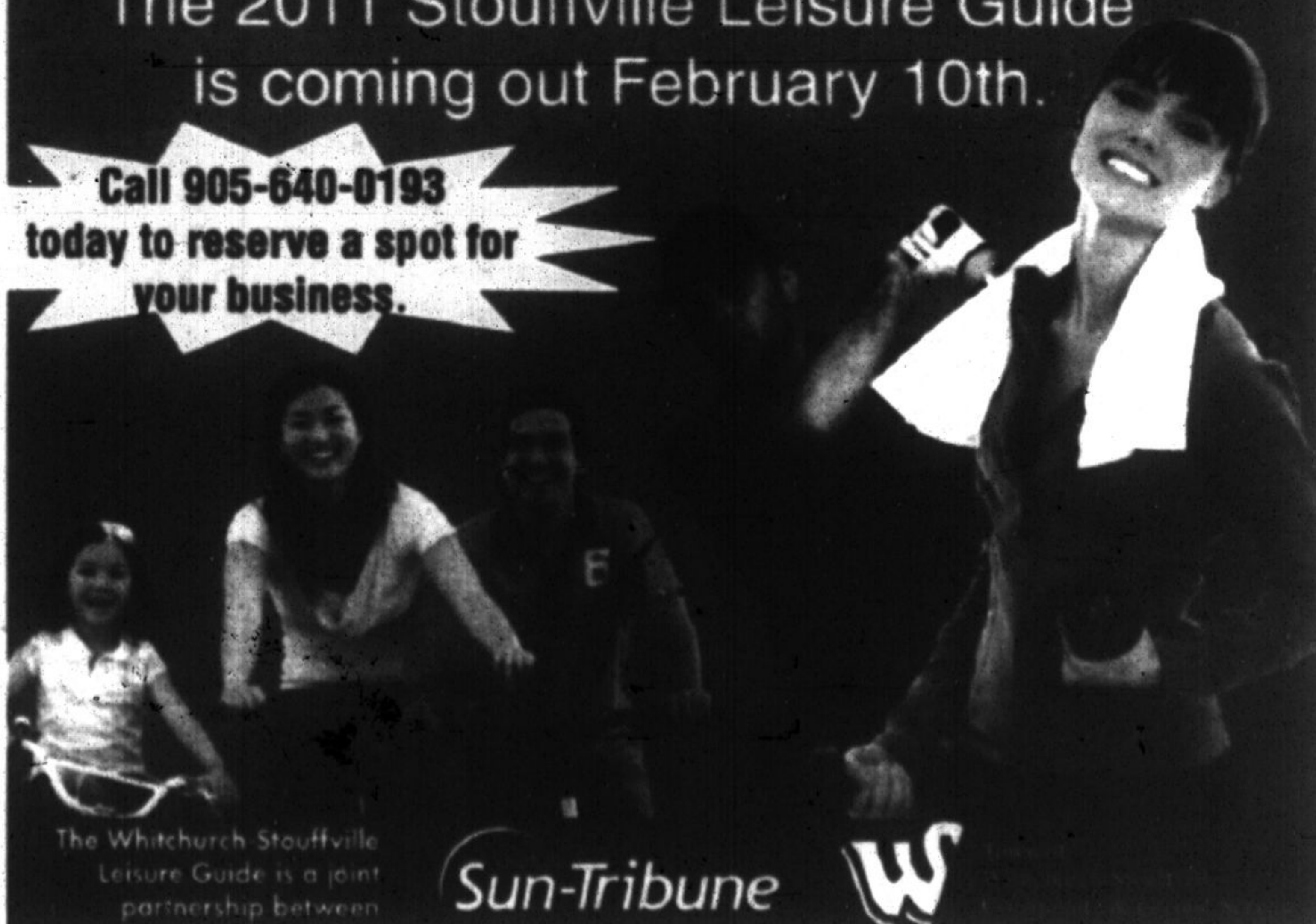


# Get the LEISURE GUIDE

SPRING & SUMMER 2011

The 2011 Stouffville Leisure Guide is coming out February 10th.

Call 905-640-0193 today to reserve a spot for your business.



The Whitchurch-Stouffville Leisure Guide is a joint partnership between

Sun-Tribune

