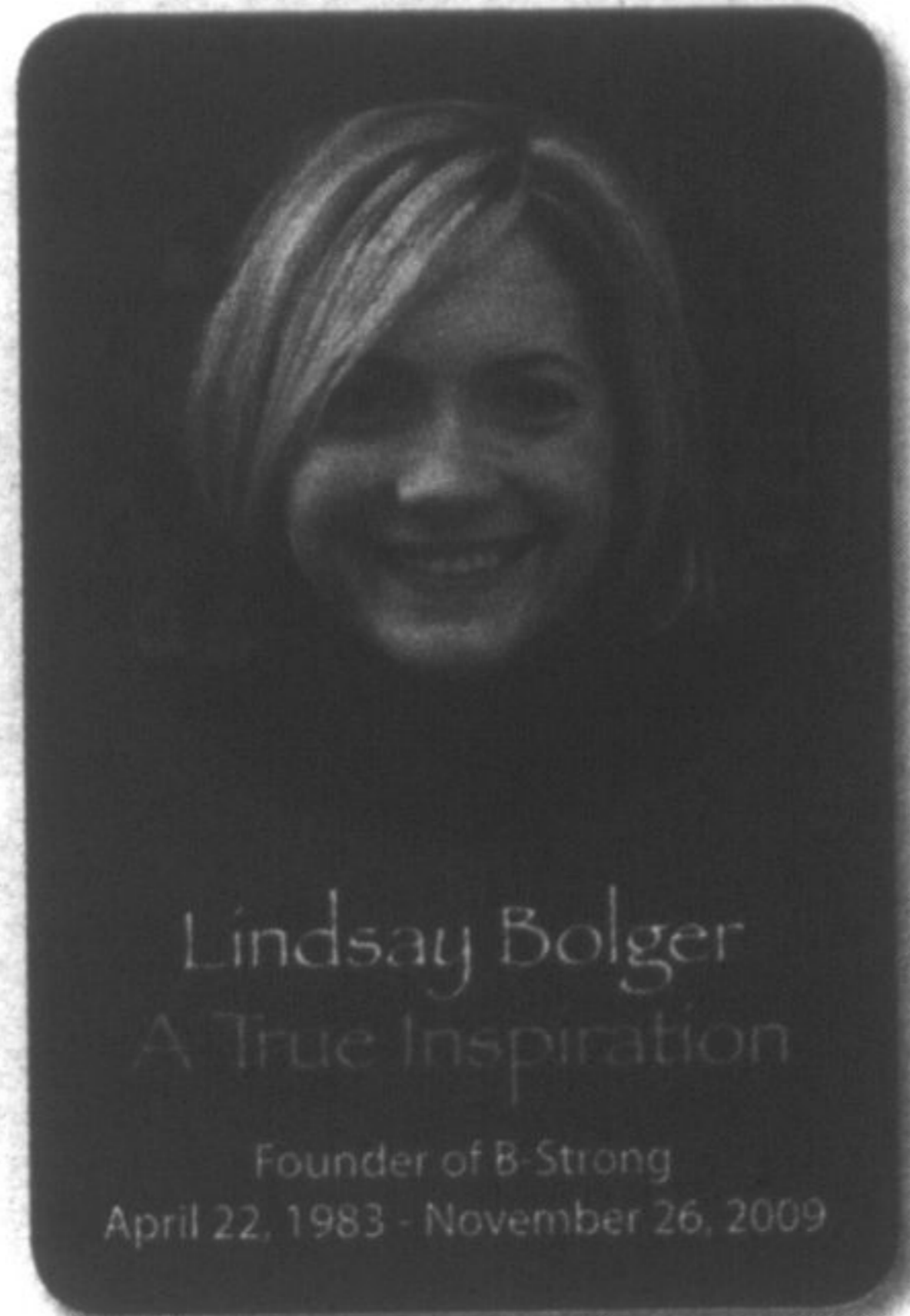


# B-Strong Bash

Thanks to the generosity of all our sponsors, donors, volunteers and a very supportive community, the 4<sup>th</sup> annual B-Strong Bash, held on Friday, October 1, 2010, proudly raised more than

## \$100,000

for brain tumour research



## You can keep helping!



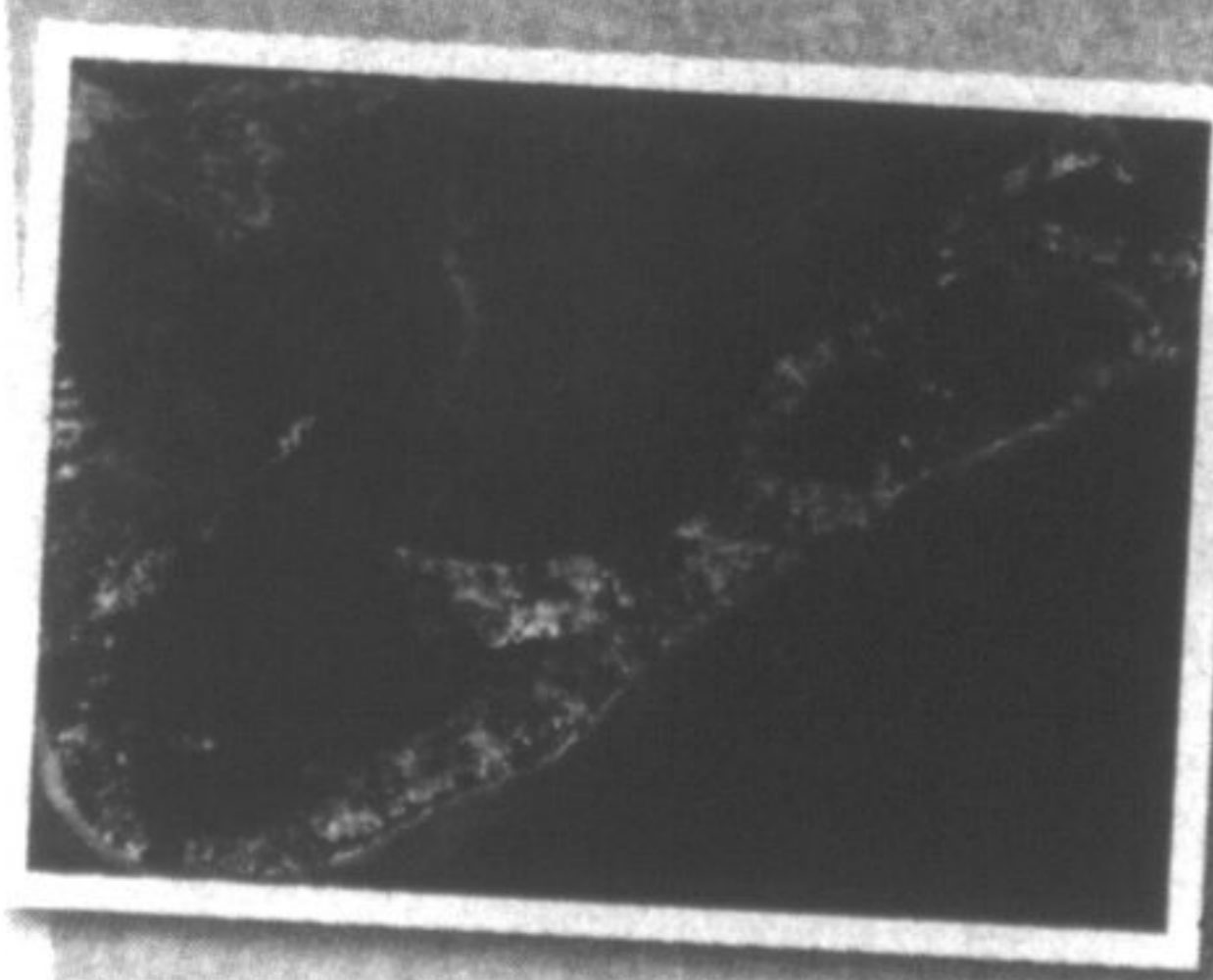
Please visit [www.bstrong.ca](http://www.bstrong.ca) to view Bash pictures, make donations and purchase Lindsay Bears and Caps.



There's still time to join the 2011



## B-Strong CRUISE



7-night Bermuda Cruise  
Departs New York May 1, 2011  
A portion of your ticket value will be donated to B-Strong

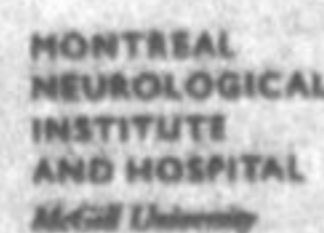


905-709-4055  
[www.gocruising.ca](http://www.gocruising.ca)

## Save the date!

Next year's B-Strong Bash is Friday, Sept. 30, 2011

Your support will help make breakthrough research and innovative treatments possible.



## FLYERS

Inserts for Thursday, Dec. 2, 2010

- |                          |                           |
|--------------------------|---------------------------|
| BUDGET BLINDS*           | PJ'S PET CENTRE*          |
| 2001 AUDIO VIDEO*        | T&T SUPERMARKET*          |
| CIBC*                    | CANEAST*                  |
| EAST SIDE CHEV OLDS*     | FIRST CHOICE SUPERMARKET* |
| GIANT TIGER*             | GREAT WALL FURNITURE*     |
| COSMO MUSIC*             | FOODY MART*               |
| SOBEYS GARDEN MARKET*    | SPORT CHEK*               |
| M&M MEATS*               | MARKS WORK WAREHOUSE*     |
| DISTINCT LIVING*         | PANASONIC*                |
| EVANGELO'S*              | STAPLES - BUSINESS DEPOT* |
| MODERN HOME FURNITURE*   | HOME OUTFITTERS*          |
| GET BENTO*               | HOME DEPOT*               |
| SOL ESCAPE SALON*        | CANADIAN TIRE*            |
| LITTLE CAESARS*          | KITCHEN STUFF PLUS*       |
| MAGIC NEEDLE*            | SEARS*                    |
| MARKHAM MED SPA*         | BOUCLAIR*                 |
| PHARMASAVE*              | BASKIN ROBBINS*           |
| LOWES*                   | PERSONAL EDGE*            |
| LONGO'S FRUIT MARKET*    | BLACKS*                   |
| METRO*                   | WALMART*                  |
| NATIONAL SPORTS*         | PET VALUE*                |
| PRICE CHOPPER*           | PEOPLE'S JEWELLERS*       |
| ZELLERS*                 | ZEHRS*                    |
| THE BAY*                 | REAL CANADIAN SUPERSTORE* |
| RONA*                    | DOT PATIO*                |
| SPORT MART*              | BEST BUY*                 |
| PARTY PACKAGERS*         | TSC STORES*               |
| FOOD BASICS*             | FUTURE SHOP*              |
| LEON'S FURNITURE*        | PAYLESS SHOES*            |
| STOUFFVILLE IDA*         | NO FRILLS*                |
| FOODLAND*                | LOBLAWS*                  |
| THE BRICK*               | TOYS R US*                |
| HENRY'S CAMERA*          | MICHAEL'S ARTS & CRAFTS*  |
| XS CARGO*                | THE SOURCE*               |
| MERCEDEZ BENZ SOLUTIONS* | WALMART SUPER CENTRE*     |
| ARROW FURNITURE*         | SHOPPERS DRUG MART*       |
| ORIENTAL FOOD MART*      | MAPPINS*                  |
| REXALL*                  | COMBO WRAP*               |

No one delivers results like we do!  
To find out more about how to reach your target market and get the same great response from your flyer distributions as these customers, call us today! \*Selected areas only

Stouffville  
**Sun-Tribune**  
visit [flyerland.ca](http://flyerland.ca)

**905-294-2200**

CHRISTMAS: East Side Mario's drive

## Restaurant serving up toys for hospital

Stouffville's East Side Mario's is hoping to put a little budda boom budda bing into the holiday season for the children spending it at Markham Stouffville Hospital.

Until Dec. 21, the Main Street eatery is holding a toy drive, with all items going to the Markham Stouffville Wish List for Children, which helps ease the stress of being in the hospital.

"Having kids myself, it bothers me seeing kids in the hospital at Christmas. I think 'Oh my God, it could be my kids,'" said Corey Smith, kitchen manager at the Stouffville restaurant and organizer of the toy drive. "Hopefully (it will) make their stay a little bit easier in the hospital."

### WISH LIST FOR PATIENTS

Toys on the wish list include Barbie, action hero figures, Lego, books, teen and children's DVD movies, movie theatre or iTunes gift cards for teenagers, multi-cultural card games, Slinkies, Fisher Price medical kits, crayons and colouring books, Playdough and puzzles.

A full list is available at [www.msh.on.ca/programs\\_and\\_services/paediatrics](http://www.msh.on.ca/programs_and_services/paediatrics)

Toys to be avoided include those with small chokable and/or sharp pieces or items that easily fall apart.

All items being donated to East Side Mario's toy drive must be new and unwrapped.

- Sandra Bolan

### ENTER YOUR FRIENDS & NEIGHBOURS



20<sup>th</sup> ANNUAL

## Stouffville Outdoor Christmas Display Contest

\$325 in CASH PRIZES

Deadline for Entries  
Monday Dec. 13

Stouffville  
**Sun-Tribune**

To enter call 905.640.2612 ext 23  
or e-mail [jmason@yrmg.com](mailto:jmason@yrmg.com)

