

Stouffville Sun-Tribune

SATURDAY, OCT. 9, 2010 ■ SERVING THE COMMUNITY OF WHITCHURCH-STOUFFVILLE ■ 20 PAGES/\$1 INCLUDING GST

PRADA • GUCCI • DIOR • OAKLEY • RAYBAN • ARMANI
VIVID OPTICAL
FREE EYE EXAM
 20% OFF ALL SUNGLASSES offer cannot be combined
 6292 Main Street, Stouffville
 905.640.3537 | www.vividoptical.ca
 PRADA • GUCCI • DIOR • OAKLEY • RAYBAN • ARMANI

THE ARTS

Tour has come long way in 10 years

BY SANDRA BOLAN
 sbolan@yrmg.com

The Whitchurch-Stouffville Studio Tour and Sale didn't start out as a tour, but a pottery sale at the clock tower with a couple of local artists in the mix.

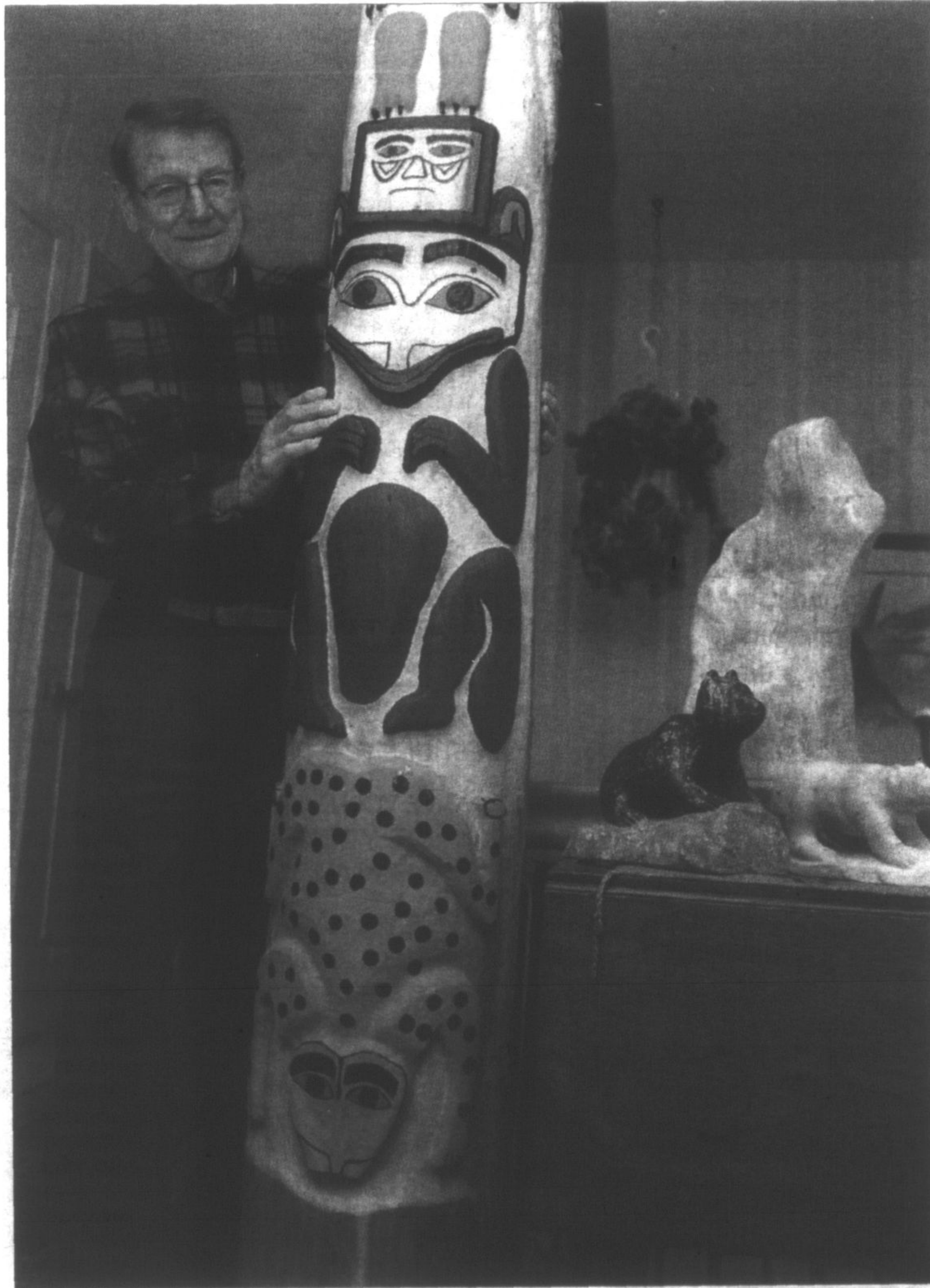
Ten years later and the tour really is a tour, with 36 local artists exhibiting their work in 24 locations throughout town.

Next weekend, artists will be showcasing and selling work in everything from oil to water colour, jewelry making and yes, there is even a potter, Marie Messina, who was part of the original show in 2000.

The studio tour, which takes place Oct. 16 and 17 throughout Whitchurch-Stouffville, has gained a reputation for being a 'must-see tour' not only because of the quality of the work being offered for sale, but because it takes people into the artists' studios.

"We still feel it's the most important thing we do," said Ray McNeice, a watercolour artist who has been a part of the tour since its second year. "We

See **FORMER**, page 11.



STAFF PHOTO/SUSIE KOCKERSCHIEDT

Dean Axelson, with a seven-foot cedar totem pole, has been sculpting in wood and stone for 20 years. The Ballantrae artist will take part in next weekend's Whitchurch-Stouffville Studio Tour.

BUYERS CONFRONT BUILDER

Recession helped delay Stouffville condo project

BY SANDRA BOLAN
 sbolan@yrmg.com

What was supposed to be a quick photo-op of developers, investors and local politicians putting shovels into the ground at Terrace on Rouge Creek in west-end Stouffville, turned into a confrontation between disgruntled condo buyers and the landowner.

The purchasers were angry because they say for upwards of two years, the property owner, Rocco Rossi, has not provided enough information regarding the project's delays. Mr. Rossi is not the Rocco Rossi running for mayor of Toronto.

Nancy Anderton and her husband, Rolie, are among roughly 80 buyers who put a down payment on a condo at Terrace on Rouge Creek that was originally scheduled for occupancy this past June.

Many of the purchasers showed up at the ground-breaking ceremony Tuesday afternoon to confront Mr. Rossi.

The group had one simple question for him: why all the delays?

The answer is a complicated one.

Terrace on Rouge Creek, which is on Baker Hill Drive, just north of Main Street, is branded as a luxury condominium building for empty-nesters and comes complete with 24-hour concierge service, a fitness centre, guest suite, party room and underground spray-off bay for vehicles.

Units went on the market in early 2008

See **'NAIVE'**, page 3.

ELECTION OPINIONS? E-MAIL LETTERS TO THE EDITOR TO JMASON@YRMG.COM

Sutton
 GROUP

Town and
 Country
 Realty Ltd.
 Brokerage
 905-640-0888

Worry Free Snow Removal for Business & Home

Fall Special

Up to 30% in Discounts
 Before Oct. 15

Will not be undersold

Call or E-mail for your competitive
 same day quote!

Proudly Serving Markham & Stouffville

Chaplin
 PROPERTY SERVICES

1877-404-4CPS (4277)
 Info@ChaplinGroup.com

Registered & Insured

Seaway
 Pools &
 Hot Tubs
 27 HERITAGE RD.,
 MARKHAM
294-8030
 beachcomber
 HOT TUBS