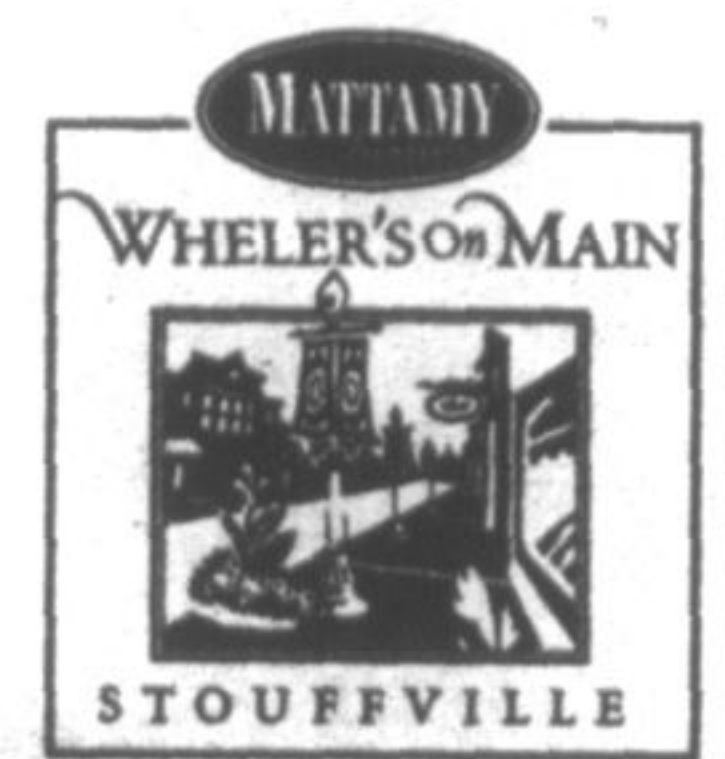




mattamyhomes.com

Come And See Where Style And Affordability Meet In Stouffville.



Model Home Interior In Wheler's Community

We are proud to announce that both our established Wheler's communities are wide open. You will find our elegant 45' and 50' WideLot™ homes in Wheler's Mill as well our very final release of 36' detached WideLot™ homes in Wheler's on Main. Once these homes are gone, our Wheler's communities will be complete.

We invite you to visit us today and drive around these communities to see first-hand the many family benefits of life in Wheler's. All of the things that have made our communities so highly regarded are readily available in our Stouffville neighbourhoods. There's even a splash pad, which helps make this a very cool place. Visit us today to see more of our Wheler's communities.

Detached Homes From \$399,990

	Main St.	
Marlham Rd.	Hoover Park Dr.	9th Line
	Sales Centre	10th Line
	19th Ave.	



36' WideLot™, The Laketon 'C',
1,945 Sq.Ft., \$416,990



50' WideLot™, The Winfield 'C',
3,426 Sq.Ft., \$575,990

BILD 2009 Home Builder Of The Year.

Presentation Centre Hours: Monday to Thursday 1pm-8pm;
Friday 1pm-6pm; Saturday, Sunday and Holidays 11am-6pm

All illustrations are artist's concept. All dimensions are approximate. Prices, specifications, terms and conditions subject to change without notice. E.&O.E.