



mattamyhomes.com

Come And See Stouffville's Best Variety Of New Home Styles.

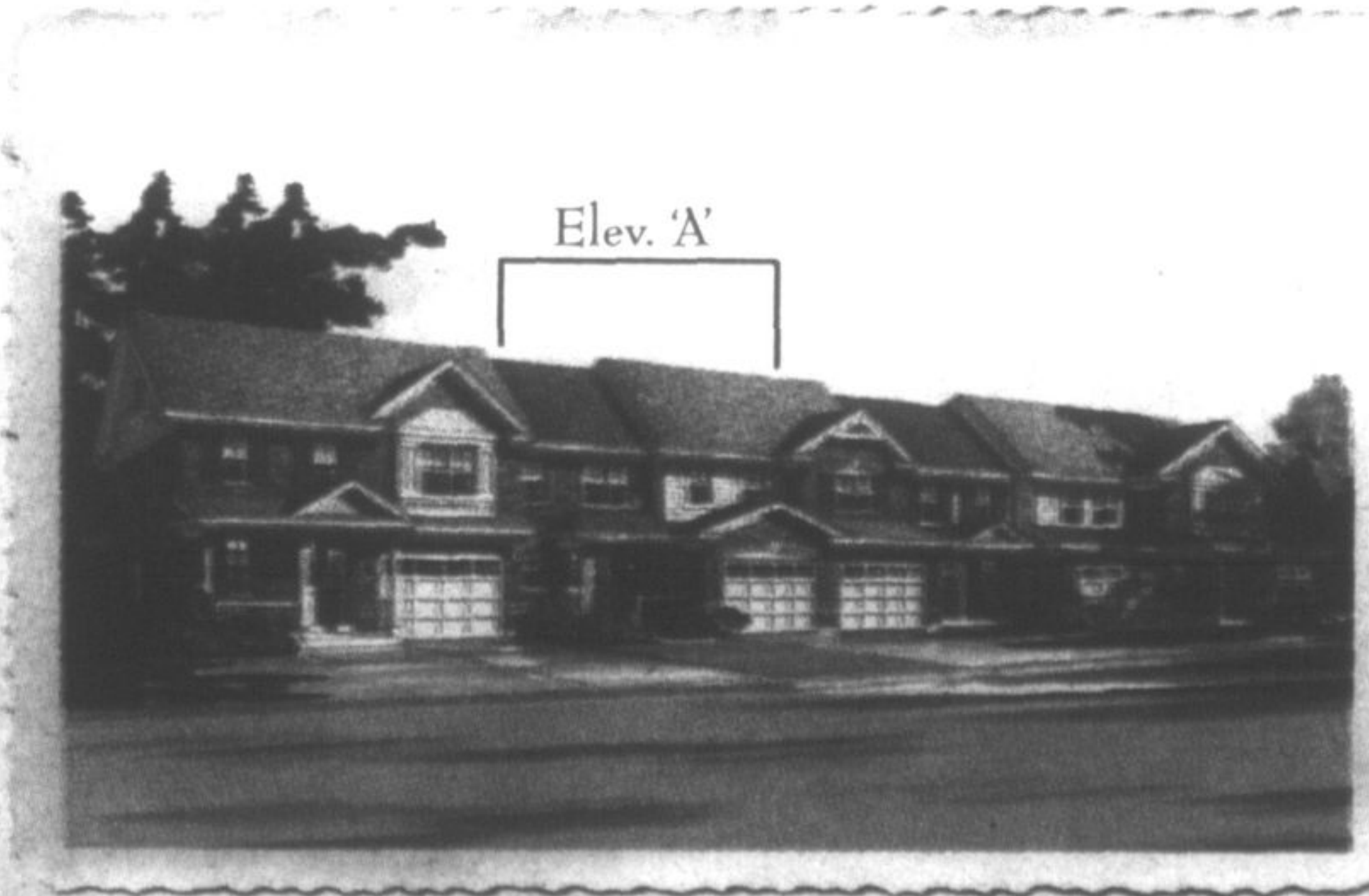


Wheeler's 36' Model Home

Today we are proud to announce that both our established Wheeler's communities are wide open. You will find our elegant 45' and 50' WideLot™ homes in Wheeler's Mill as well our very final release of WideLot™ Townhomes, as well as 30', 36' and 40' detached homes in Wheeler's on Main. Once these homes are gone, our Wheeler's communities will be complete.

We invite you to visit us today and drive around these communities to see first-hand the many family benefits of life in Wheeler's. - All of the things that have made our communities so highly regarded are readily available in our Stouffville neighbourhoods. There's even a splash pad, which helps make this a very cool place. See you this weekend.

WideLot™ Townhomes From \$282,990
Detached Homes From \$335,990



WideLot™ Townhome, The Dalton 'A',
 1,304 Sq.Ft., \$290,990



50' WideLot™, The Leawood 'C',
 3,386 Sq.Ft., \$574,990

BILD 2009 Home Builder Of The Year.

**Presentation Centre Hours: Monday to Thursday 1pm-8pm;
 Friday 1pm-6pm; Saturday, Sunday and Holidays 11am-6pm**

All illustrations are artist's concept. All dimensions are approximate. Prices, specifications, terms and conditions subject to change without notice. E.&O.E.