



mattamyhomes.com

This Saturday We Release Our Final Selection Of Homes In Wheler's On Main.

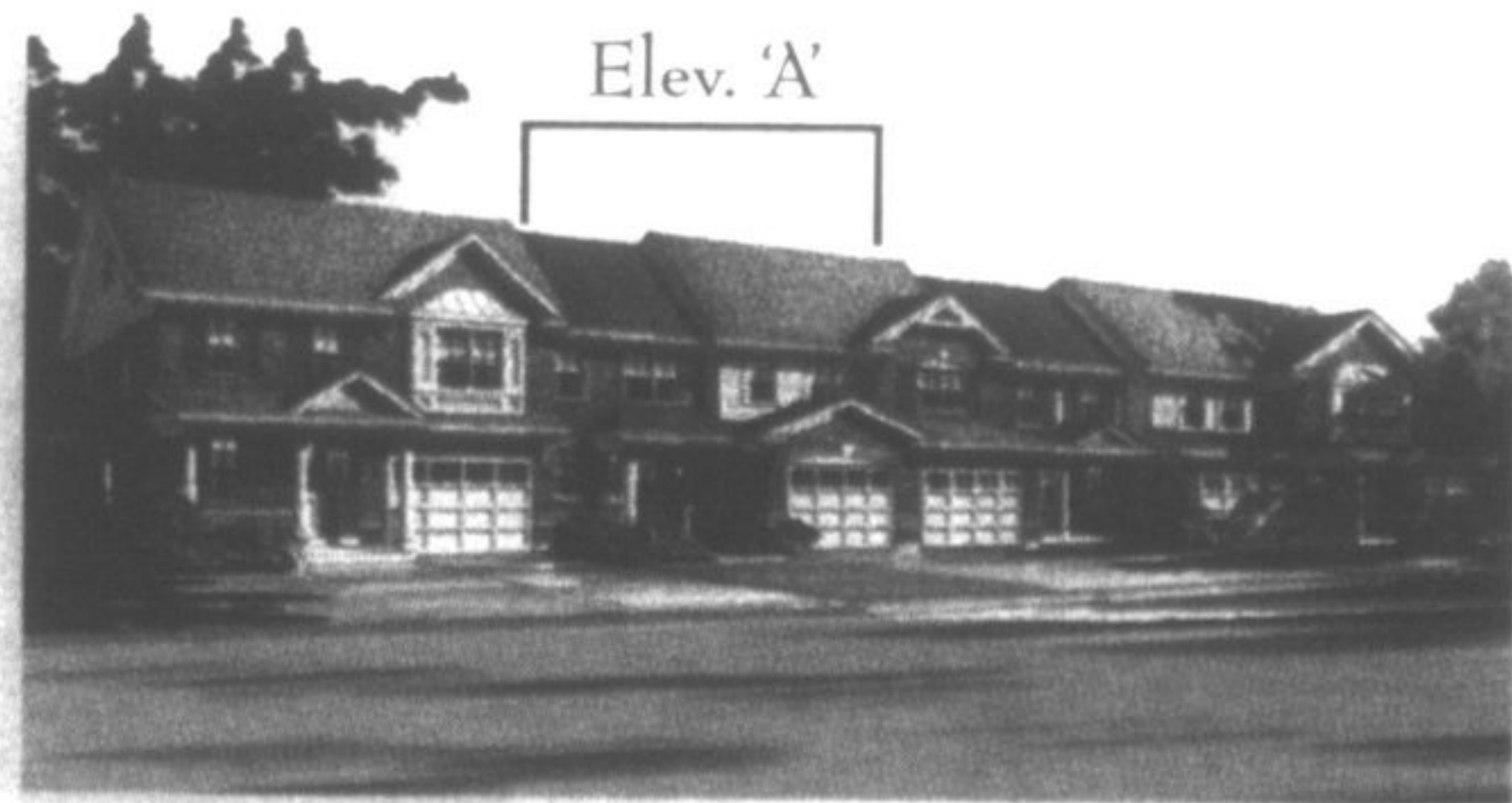


Wheler's Community Park And Basketball Court

Now, as well as our recently released elegant 45' and 50' WideLot™ homes in Stouffville, we are presenting our very final release of WideLot™ Townhomes, as well as 30', 36' and 40' detached homes in Wheler's on Main. Once these homes are gone, our Wheler's communities will be complete.

We invite you to join us this weekend and drive around these communities to see first-hand the many family benefits of life in Wheler's. All of the things that have made our communities so highly regarded are readily available in our Stouffville neighbourhoods. There's even a splash pad, which helps make this a very cool place. See you this weekend.

WideLot™ Townhomes From The \$270's
Detached Homes From The \$330's



WideLot™ Townhome, The Dalton 'A',
1,304 Sq.Ft.



30' WideLot™, The Matheson 'B',
2,032 Sq.Ft.



Now Open In Wheler's Mill.

A New Release Of Elegant 45' and 50' WideLot™ Homes Starting From \$477,990



BILD 2009 Home Builder Of The Year.

Presentation Centre Hours: Monday to Thursday 1pm-8pm;
Friday 1pm-6pm; Saturday, Sunday and Holidays 11am-6pm

All illustrations are artist's concept. All dimensions are approximate. Prices, specifications, terms and conditions subject to change without notice. E & O E.