

**MATTAMY**  
homes

BILD 2009 Home Builder Of The Year.

[mattamyhomes.com](http://mattamyhomes.com)

5, Stouffville Sun-Tribune ■ Thursday, July 1, 2010

# Coming Soon, Our Final Collection Of Well-Appointed Homes In Stouffville.

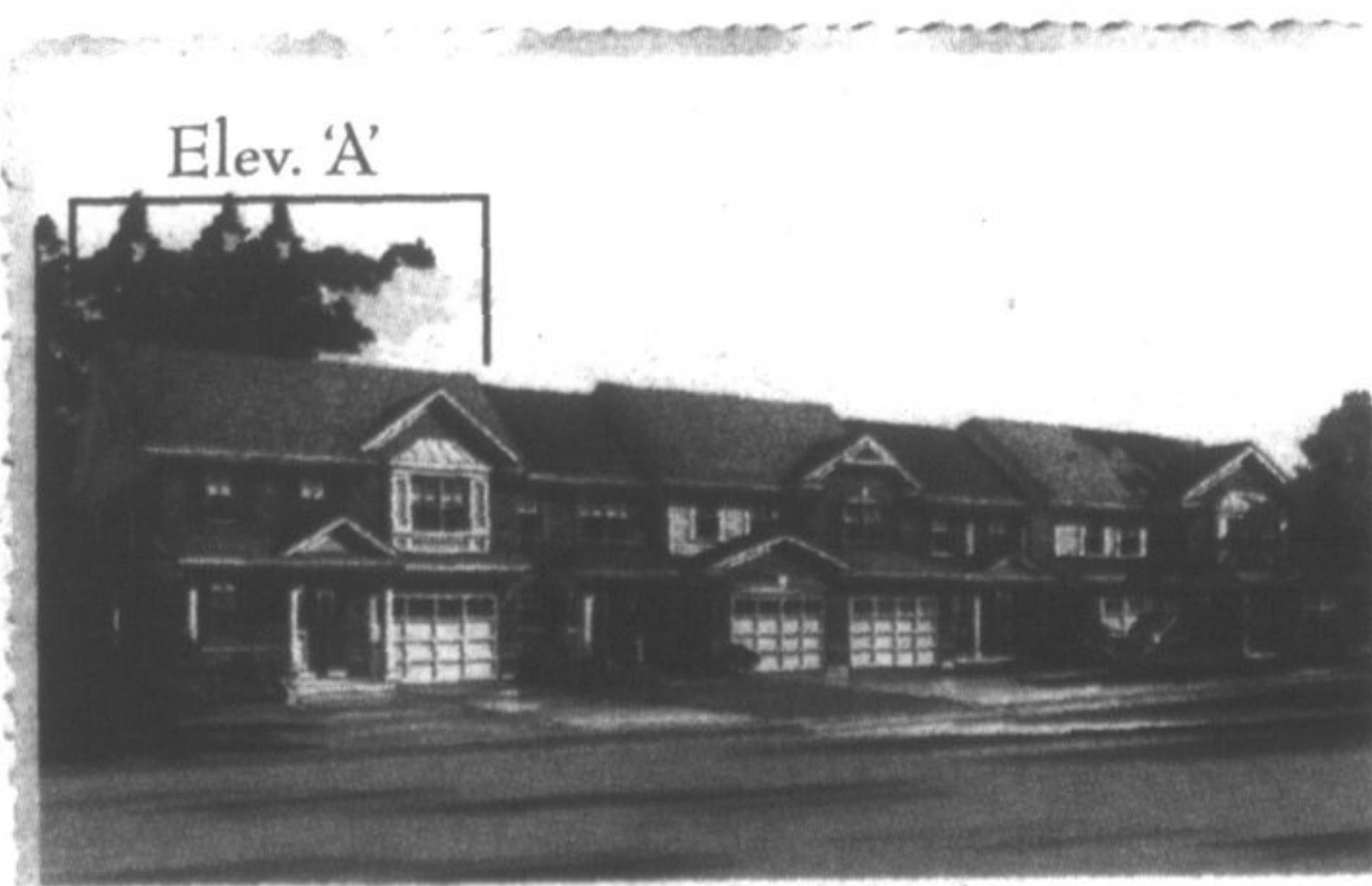


Wheeler's Mill 45' WideLot™ Kitchen

Our Wheeler's communities are well-regarded family neighbourhoods right in the heart of Stouffville. There is a pleasant family ambience, many homes that include front porches and special neighbourhood features such as lots of park space, gently winding streets, walking/biking trails and a great variety of homes so each street has a unique identity. There's even a new high school and elementary school built into the community. Shopping is conveniently located just minutes away in both Stouffville and Markham.

Soon we'll open our final collection of homes which includes very affordable Townhomes, 30', 36', 40', 45' and 50' detached WideLot™ homes. We invite you to take a drive through both of our Stouffville communities and discover the many compelling reasons for considering your new home in our Wheeler's neighbourhoods.

*To Pre-Register For This Community, Please Visit [www.mattamyhomes.com](http://www.mattamyhomes.com)*



Elev. 'A'  
WideLot™ Townhome, The Fullwood 'A',  
1,492 Sq.Ft.



45' WideLot™, The Lakeview 'B',  
3,122 Sq.Ft.

[mattamyhomes.com](http://mattamyhomes.com)

★★★★★ "Ranked Top 3 Or Higher In The J.D. Power  
Customer Satisfaction Study Five Years In A Row" ★★★★★

All illustrations are artist's concept. All dimensions are approximate. Prices, specifications, terms and conditions subject to change without notice. E&OE.

Presentation Centre Hours:  
Monday to Thursday 1pm-8pm; Friday 1pm-6 pm;  
Saturday, Sunday and Holidays 11am-6pm