

**WILD SIDE**



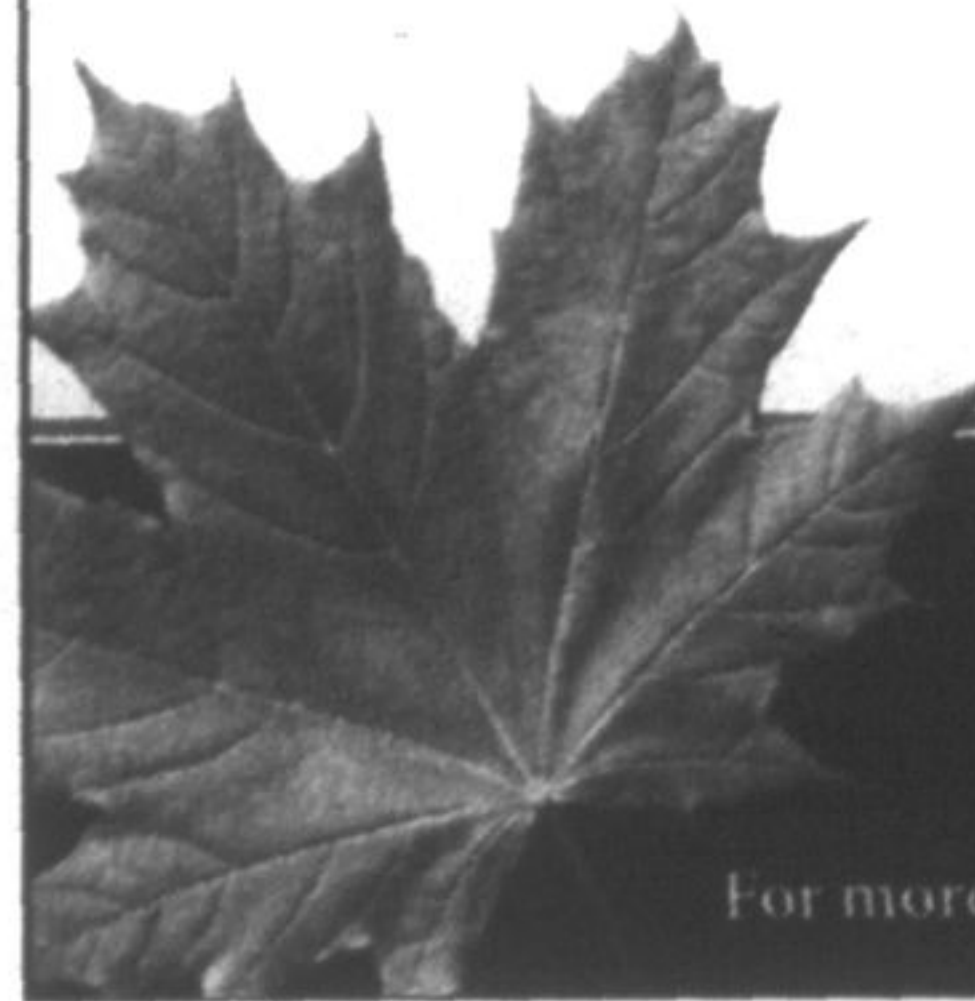
Whitchurch-Stouffville resident Elizabeth Johnston took this photograph of what's believed to be a coyote or wolf on Aurora Road near the railway tracks, between Woodbine and Warden avenues.

# Tap into Spring

**Sugarbush Maple Syrup Festival  
at Kortright and Bruce's Mill**

*March 6 - April 11, 2010*

- Guided maple syrup walks
- Old fashioned and modern maple syrup demonstrations
- Live kids' entertainment
- Wagon rides



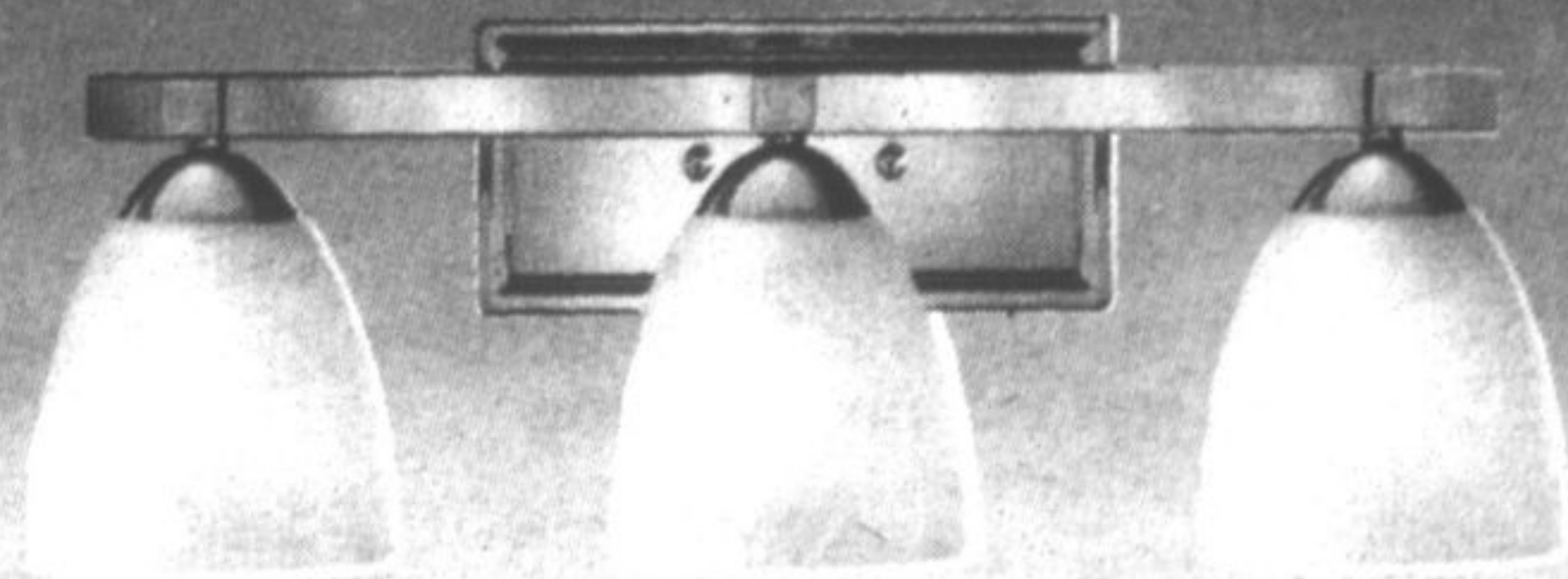
**Bruce's Mill**

**Kortright**

**Conservation  
for The Living City**

For more information visit [www.maplesyrupfest.com](http://www.maplesyrupfest.com) or call 416-667-6299

11, Stouffville Sun-Tribune ■ Thursday, March 11, 2010



**Classic  
yet current.**

save on all in-stock  
*vanity lights*

**Spring  
Collection**  
Arriving Daily!  
Come See!

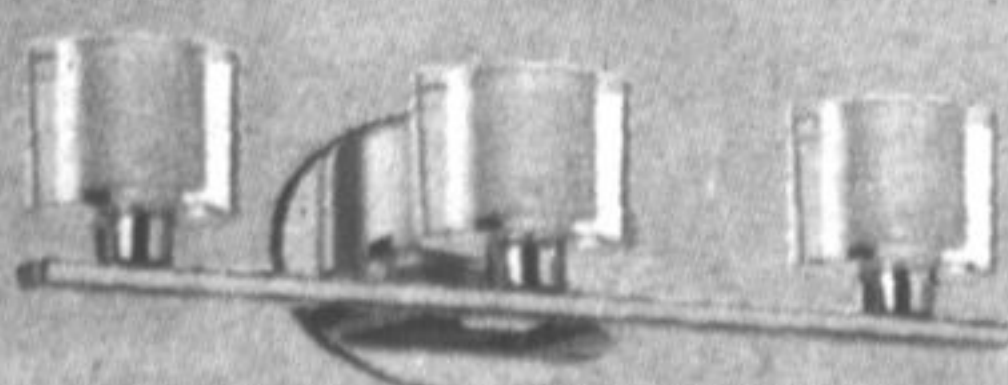


**Sleek &  
sophisticated.**

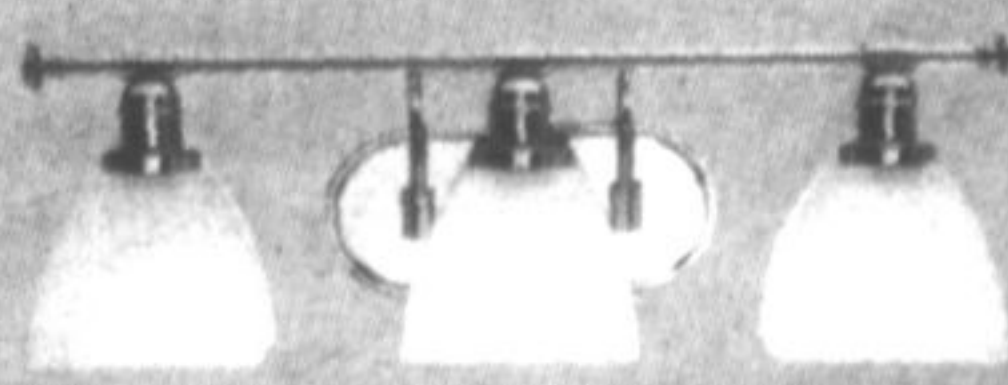
# Vanity SALE

Create the spa-like retreat you've been dreaming about with a few key lighting updates. They'll totally transform your room – on a budget that's totally affordable. Especially now, when all in-stock vanity lights are on sale at our best prices of the season. With so many styles, you'll find just what you're looking for. **Living Lighting. It's light for living.**

ASK THE EXPERTS AT [WWW.LIVINGLIGHTING.COM](http://WWW.LIVINGLIGHTING.COM)



**Clean & crisp.**

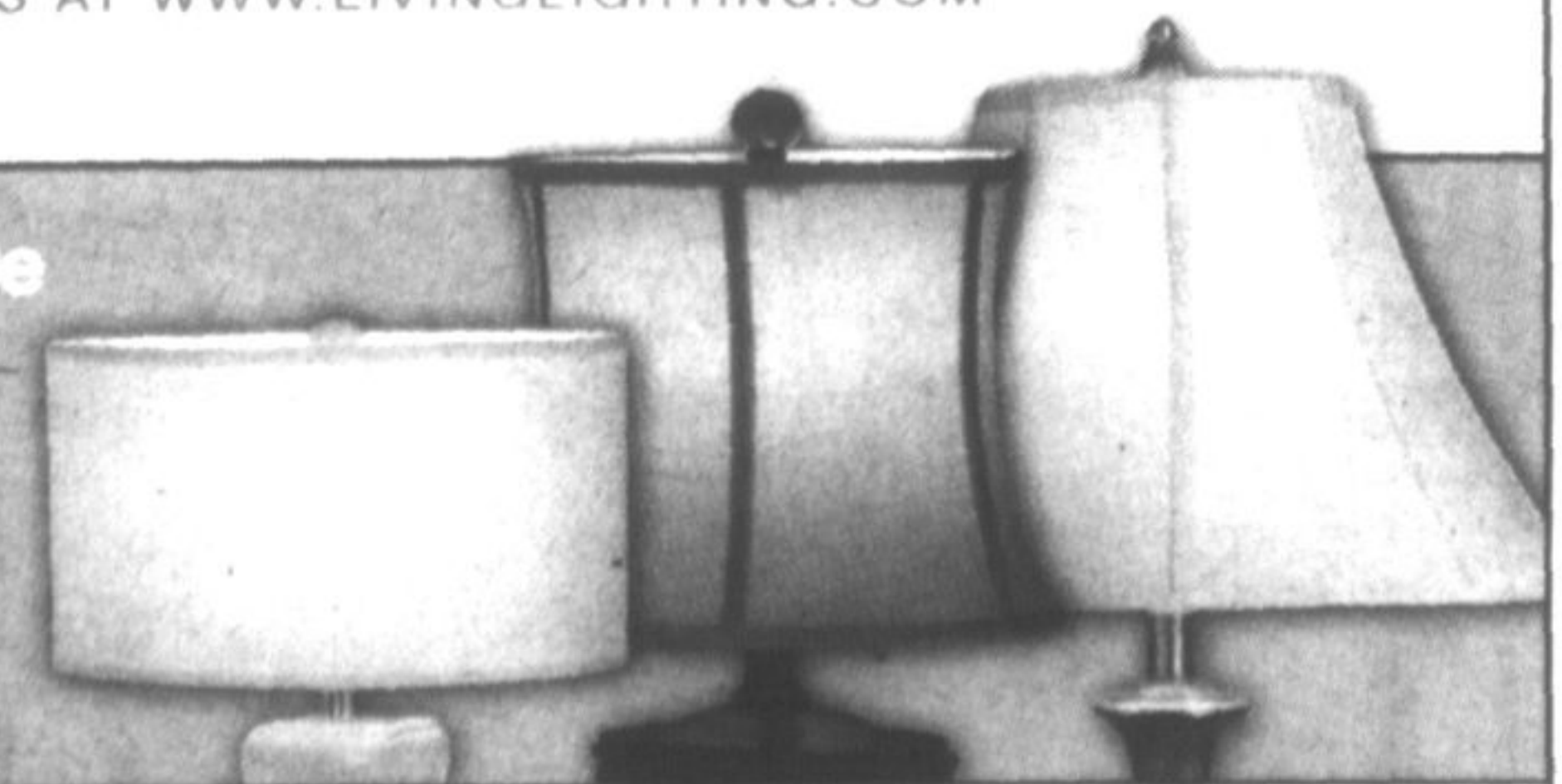


**Elegant ambiance.**



**Modern  
interpretation.**

**Save even more  
with 20% OFF  
all in-stock  
lamp shades**

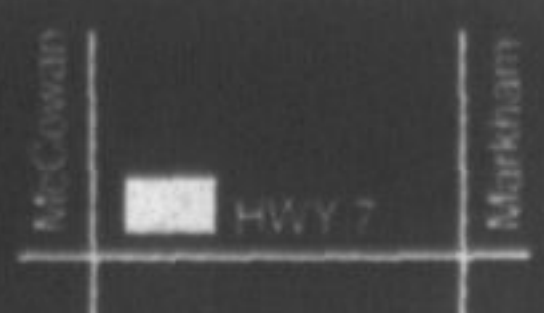


**LIVING LIGHTING** *Home Décor*

5308 Highway 7, Markham  
905.294.9557

Ask the experts at [www.livinglighting.com](http://www.livinglighting.com)

Mon-Wed 10 - 6  
Thurs & Fri 10 - 9  
Saturday 10 - 6  
Sunday 12 - 5



SALE ENDS APRIL 3, 2010 OR WHILE QUANTITIES LAST. BULBS EXTRA. MAY NOT BE AVAILABLE IN ALL STORES.