

This expansion will double the size of the existing hospital and improve its ability to meet the needs of its growing communities. The new facility will offer residents a new and expanded emergency department, an improved ambulatory care centre, an enhanced maternal child centre capable of delivering 4,000 babies a year, an expanded diagnostic imaging centre, an expanded mental health centre, over 100 new inpatient beds and eight new operating rooms.

"We are very excited about this next step in the future of the hospital," explains Janet Beed, president and CEO of Markham Stouffville Hospital. "Our communities, staff, physicians and volunteers have all been waiting for this expansion. They have seen us deliver care in cramped conditions with limited resources and the prospect of a new, expanded facility is highly anticipated."

Over the past few years, as Markham Stouffville Hospital has moved closer to expansion, the hospital has received significant support municipally, regionally and provincially. Mayor Frank Scarpitti has continued to be a vocal supporter of the hospital and in May 2009 the hospital was given site plan approval by the Town of Markham.

"The Town of Markham is very supportive of the hospital's expansion and of the enhanced services it will bring to our communities," says Mayor Scarpitti. "We are committed to working with the hospital to make this expansion a reality."

In October 2009, York Region approved a motion to extend the capital support being provided to the hospitals in the region. Without this support, the expansion would not be possible here or in other areas of York Region.

The province has also shown its support for the project and in June 2009, Premier Dalton McGuinty visited the hospital to announce a \$35.5 million capital planning and design grant. This grant allowed the hospital to continue the planning work that was already well underway.

"We were thrilled to have the premier visit the hospital," says Beed. "It was an important acknowledgement of the

work that we do and the urgent need for expansion. Our two MPPs, Michael Chan and Dr. Helena Jaczek, have been active supporters of the hospital in the community and at Queen's Park and we certainly appreciate their ongoing support."

"In order to ensure the project can be completed on time and within budget, the hospital is in the process of completing a number of its "enabling works" projects. These projects will prepare the site for construction of the new building and will reduce the overall construction costs and construction time by approximately six months. The projects, which are expected to be completed later this year, include the construction of a new staff parking lot on the north side of Church Street, new parking lots on the west near Ninth Line, relocation of the storm sewer and redevelopment of the courtyard adjacent to the emergency department to provide for additional capacity during the expansion.

"An expansion project of this size and scope isn't completed in a few months or a year," explains Beed. "Our project is measured in milestones - some large and some small and we have had our share of both. Later this month, we expect to reach another significant milestone when our project goes out to the market and a request for proposals (RFP) is issued."

The RFP process will invite the companies that have been pre-qualified to submit a bid to build and finance the hospital's expansion.

"The next major milestone, after this, will be our groundbreaking and we expect construction to begin later this year and take approximately four years to complete," says Beed. "When the new building is complete, it will be a state-of-the-art facility that really will allow us to provide our community with most of their health care needs close to home."

Patients, visitors, staff, physicians and volunteers will also benefit from the hospital's connection to the soon to be built East Markham Community Centre and Library. Together, the

hospital and community centre will form a unique health and wellness campus for patients and residents to develop and use the skills they will need to stay healthy throughout their lives.

The community centre will feature a competition-sized pool, therapeutic pool, gymnasium and wellness lounge, an indoor children's playground, a rehearsal hall and several multi-use spaces along with a full library with a medical section. The centre will link directly to the hospital, giving patients and staff direct access to the facilities and services provided.

"We believe that working with the town to create a health and wellness campus will be tremendously beneficial to our entire community," says Beed. "We want to provide the community with all the programs, services and support they need - when they are sick and when they are well."

The hospital will also be looking to the community to support the expansion.

"These exciting plans will not be possible without the financial support from our community. It is vital that we raise \$50 million toward the cost of our expansion," says Suzette Strong, CEO of the hospital's foundation.

This year will be a watershed year for the hospital's expansion campaign - *We're Growing Together*. Under the leadership of the foundation's campaign co-chairs, Mayor Scarpitti and Peter Mason, the foundation has been working closely with business and community leaders on the capital campaign focused on raising money for this much-needed expansion.

"It's important to know that while the government pays for the 'bricks and mortar,' the community is responsible to share the cost of the project by paying for furniture, fixtures and equipment," says Strong. "Our communities have always been very generous and we know that we can count on everyone to rally around the hospital. Together, we can make great things happen."

**For more information on the hospital's expansion, visit [www.msh.on.ca/expansion](http://www.msh.on.ca/expansion)**

## HOME ADVANTAGE APPLIANCE EVENT

**UP TO \$4,500<sup>†</sup>**  
**SAVINGS ON LEADING HOME APPLIANCES**  
See in-store for details.

the **MAYTAG** store.  
You Can Depend On Us!

MAYTAG JENN-AIR KitchenAid Insignia Whirlpool

Store Hours: Mon-Fri: 10-8 pm • Sat: 10-6 pm • Sun: 11-5 pm

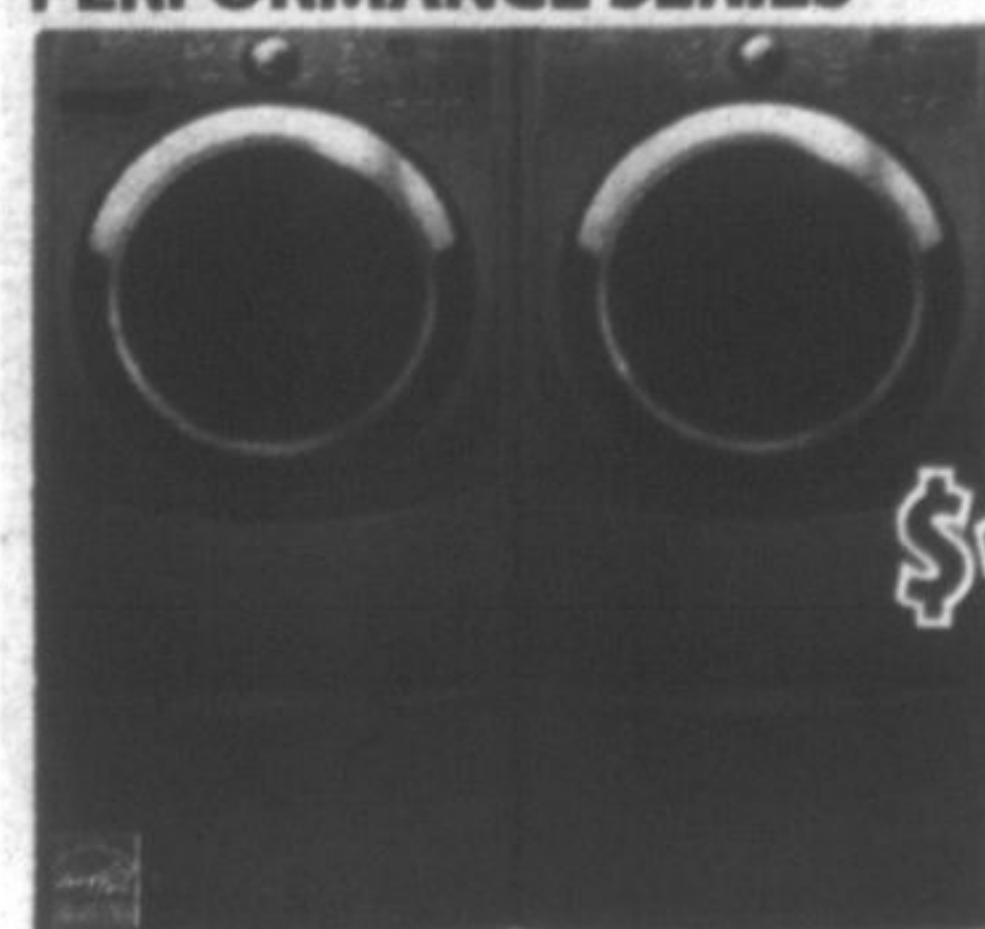
5328 Hwy, 7 East,  
Unit #3, Markham  
905 472-6507

255 Bass Pro Mills Dr,  
Unit #703, Vaughan  
905 761-0444

We also carry parts, filters & cleaners

**LIMITED TIME ONLY! • LIMITED TIME ONLY! • LIMITED TIME ONLY!**

### PERFORMANCE SERIES



### High-Efficiency Front-Load Laundry

- WASHER**
- 4.5 Cu. Ft.
  - 1300 RPM Spin
  - FreshSpin™
  - Water Heater
- DRYER**
- 7.2 Cu. Ft.
  - Steam Cycle
  - Wrinkle Prevent
  - Stackable

**\$1699**  
FOR THE PAIR

AFTER \$400 MAIL-IN REBATE

Maytag® Performance Series Pairs are built with commercial-grade parts, delivering years of dependable performance.  
New Maytag® Performance Series washers include a 10-Year warranty on the washer motor and the stainless steel wash basket.

Pedestals are not included in the price.

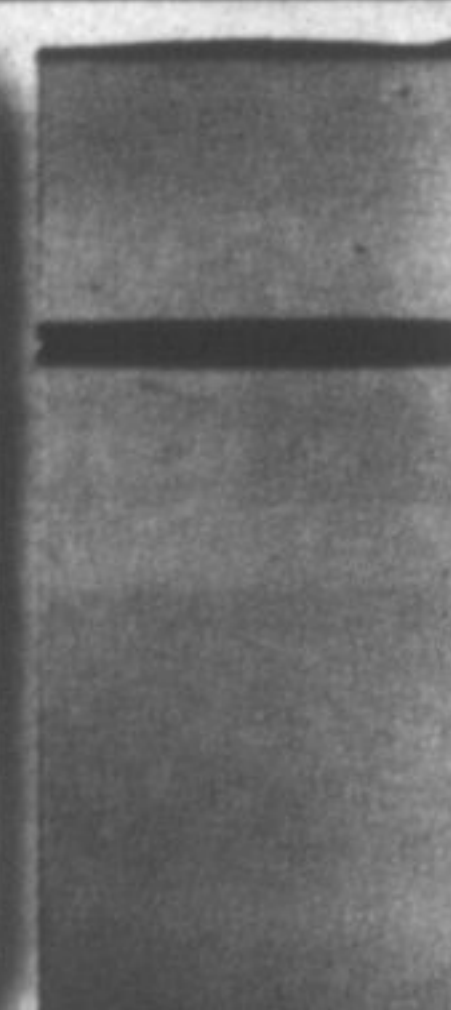
### This 3-PIECE AMANA

listed on the right is

**\$1399** INCLUDES \$200 INSTANT REBATE

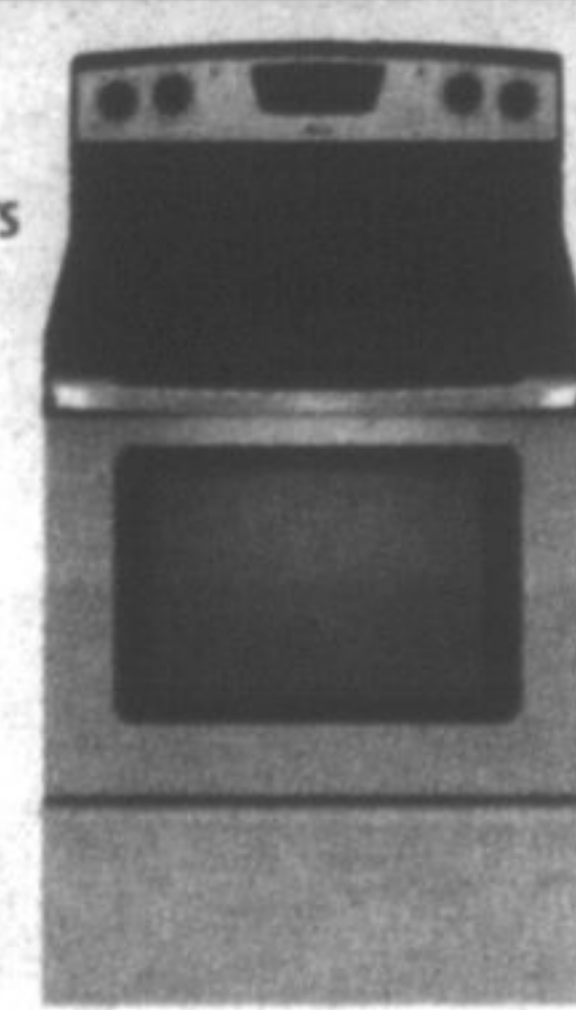
On the purchase of this 3-piece Amana® kitchen suite.

Available in White at **\$1199** \*See store for details



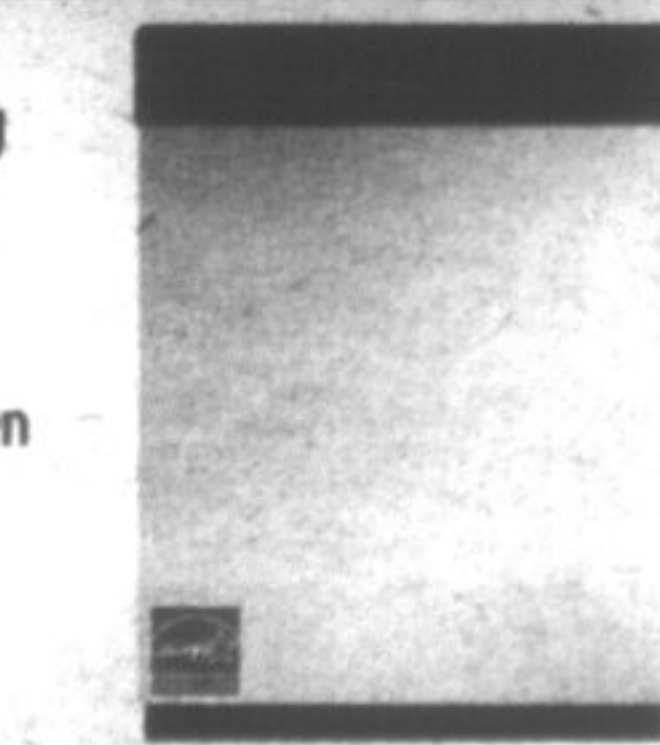
### Top-Freezer Refrigerator

- 2 Clear Crispers with Humidity Control
- 2 Full Width Adjustable Spillmizer Glass Shelves
- Gallon Door Storage



### Electric Freestanding Range

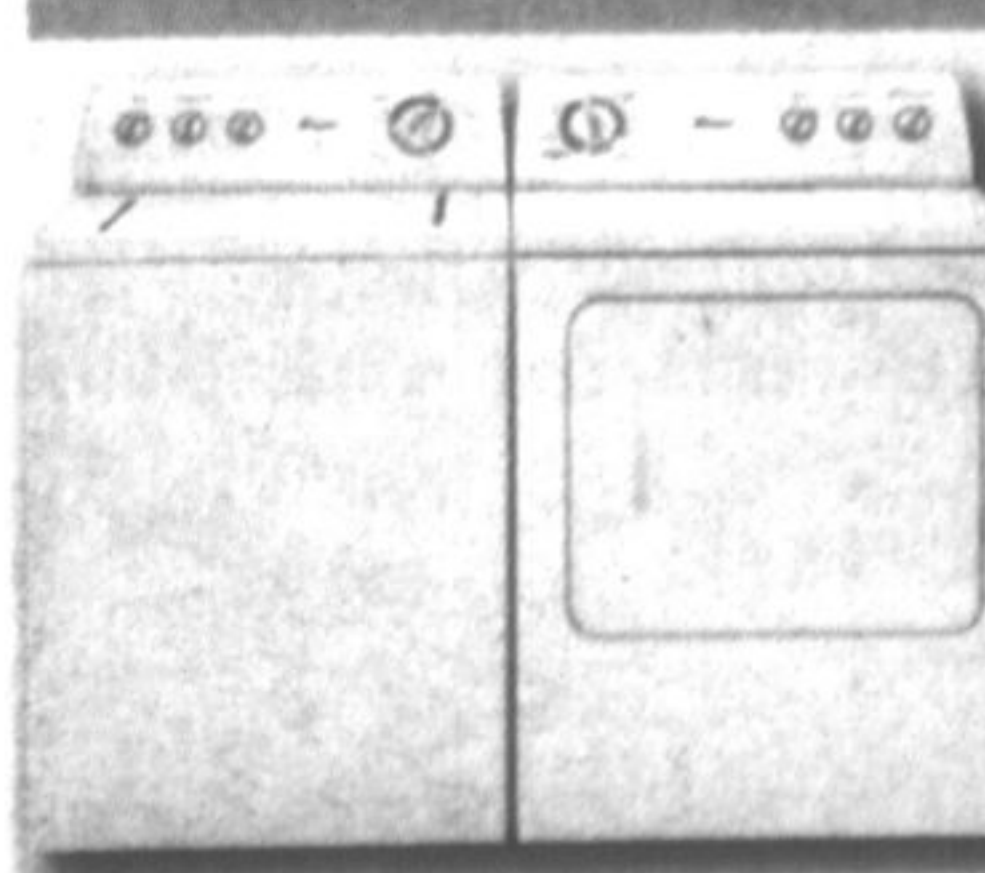
- Glass Ceramic Cooktop
- Self-clean Oven
- Delay Bake Setting
- Extra Large Oven Window



### Tall Tub Dishwasher

- MasterClean™ Plus Wash System
- Twice as Nice™ Silverware Baskets
- 4 Options • 3 Cycles

## BLOWOUT SPECIAL

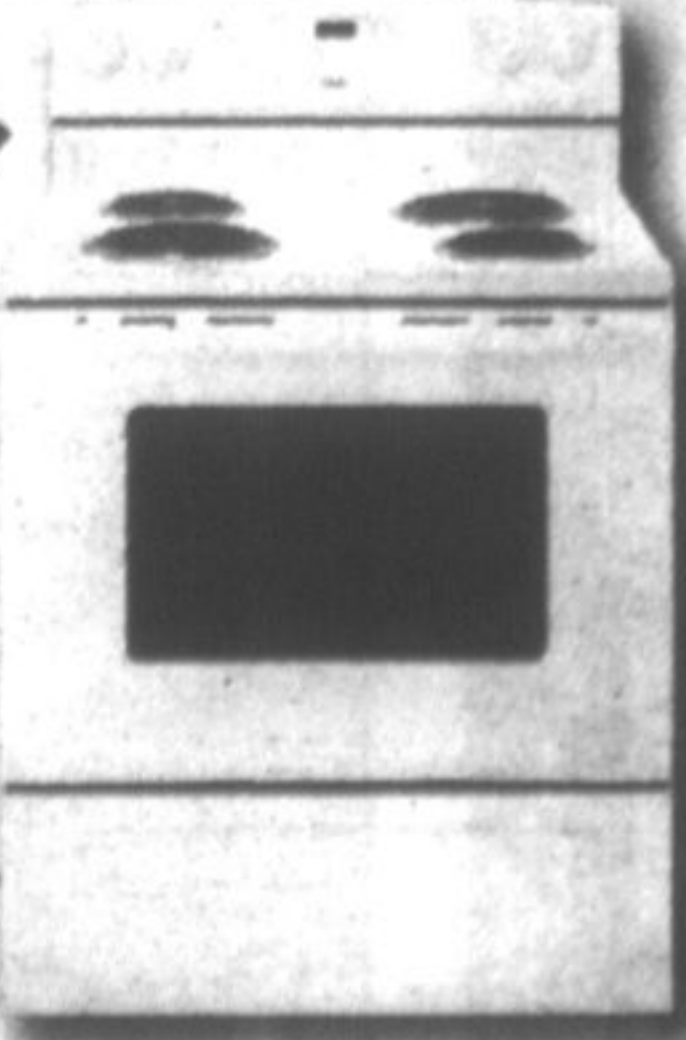


- WASHER**
- 3.2 Cu. Ft.
  - 14 Cycles
  - 4 Temp Settings
- DRYER**
- 7.1 Cu. Ft.
  - 3 Temp Settings
  - 3 Drying Levels

**\$599**  
FOR THE PAIR

**WOW!**

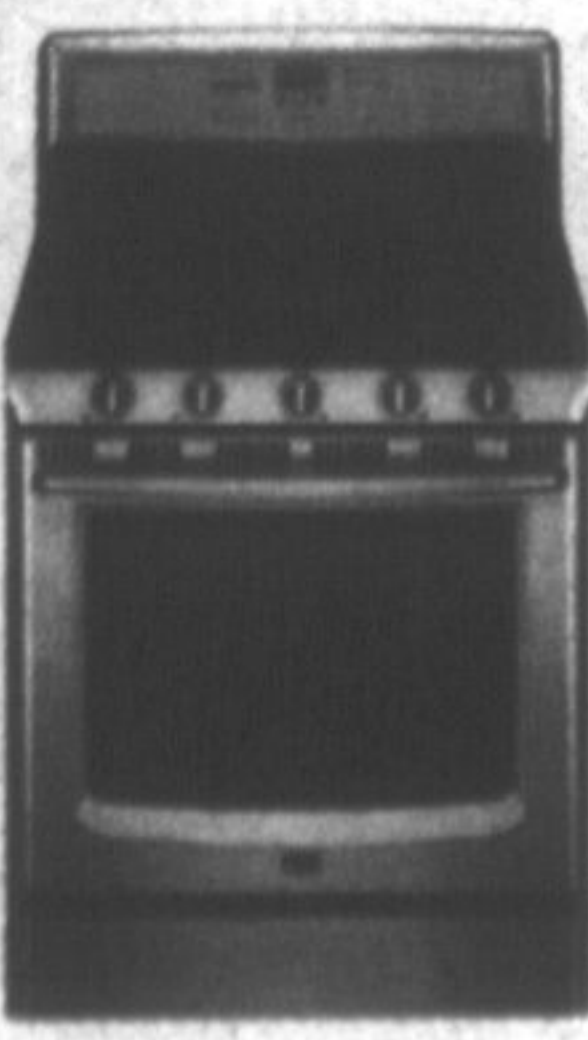
## POWER BUYS LIMITED QUANTITIES! RANGES



### Inglis Electric Free Standing Range

- Coil
- Extra Large Window
- Glass Door
- Easy Clean

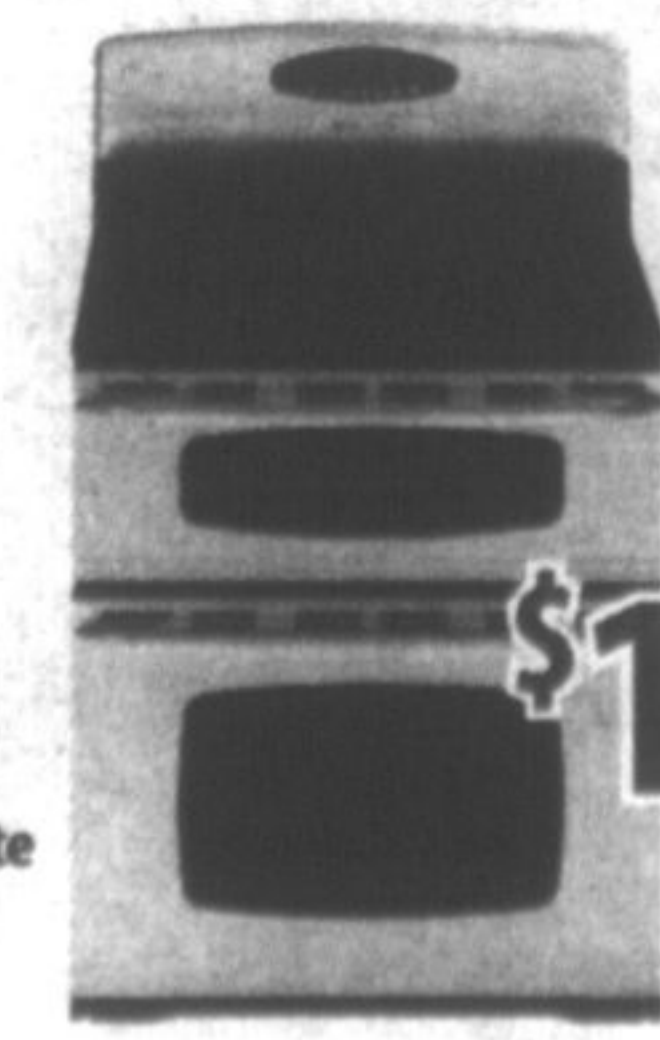
**\$299**



### Maytag Gas Range

- 1-17000 Btu Speed Heat Burner
- 1-5000 Btu Burner
- Centre Griddle
- True Convection with Auto Conversion

**\$1099**  
After \$300 Mail-in Rebate



### Maytag Double Oven Gas Range

- Stainless Steel
- Self-cleaning
- Double Oven
- 5 Burners

**\$1480**  
After \$300 Mail-in Rebate

