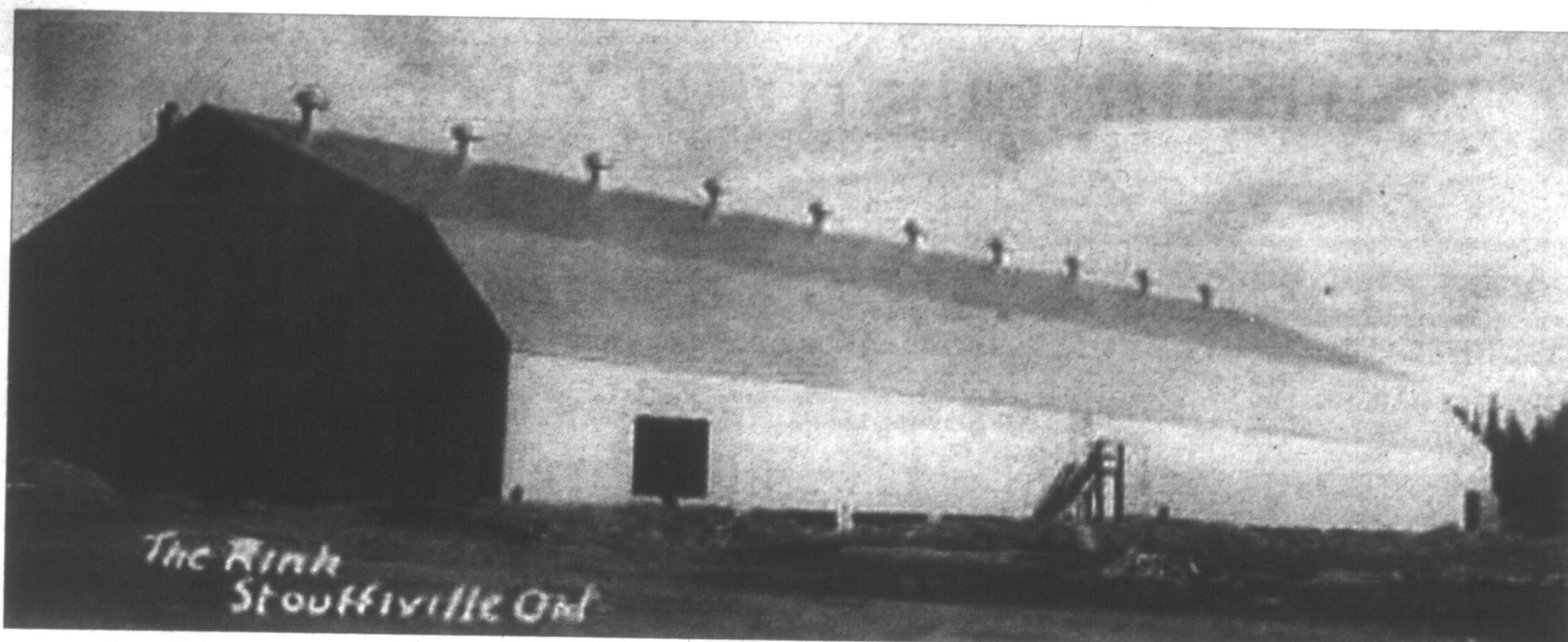


DID YOU KNOW? Clippers Sports Complex home to rinks No. 8 and 9 in Stouffville

3, Stouffville Sun-Tribune ■ Thursday, Feb. 25, 2010



PHOTOS COURTESY WHITCHURCH-STOUFFVILLE MUSEUM

This is believed to be the old Stouffville Arena. Located across from Latcham Hall, it was demolished in the 1980s and replaced by the new Stouffville Arena.

Our love of ice skates back into 1800s

BY FRED ROBBINS

The Clippers Sports Complex may be the new kid on the block, but since the late 1800s, Stouffville has been home to numerous ice rinks and recreation complexes.

They've been home to girls, boys and men's Ontario championship hockey teams, figure and speed skating stars and Stouffville's Stanley Cup winners, Bob Hassard, Keith Acton and Brad May.

They've been places of recreation and socializing.

The pond at Stouffer's Mill and another pond located just to the south of Duffin Creek - Boyer's Pond - were the town's first two outdoor rinks.

Besides being used for skating, the possibility of curling with a few rocks may well have occurred.

The first indoor ice pad was owned by R.J. Daley, a sports promoter in the village who built Daley's Hall at the corner of Main and Mill streets where the Silver Jubilee Club is now located, in 1885. Skating and curling took place in the basement of this facility.

The town's second rink was built on the second floor of Daley's Hall, according to Stouffville: 1877/1977 A Pictorial History of a Prosperous Ontario Community compiled by Jean Barkey.

Rink No. 3, also known as the Stouffville Skating Rink or Princess Rink, was also established by R.J. Daley in 1895 and it was the largest covered ice surface in the province, at 150 feet by 225 feet, according to Stouffville: 1877/1977.

The building also included a gym and practice room for the brass band.

The Ontario Hockey Association played in this rink in 1904. It was destroyed by fire two years later.

The demand for skating time in Stouffville was great and popular at the turn of the century.

Nathan Forsyth, a prominent builder, decided to construct the town's fourth ice surface - the Maple Leaf Rink - in 1901 on Park Street between Mill and Church streets.

The small ice surface - 50 feet by 150 feet - made it impossible for the OHA to play its games there.

However, a lot of other activities took place in that arena, including Ernie Button Day, according to Stouffville: 1877/1977.

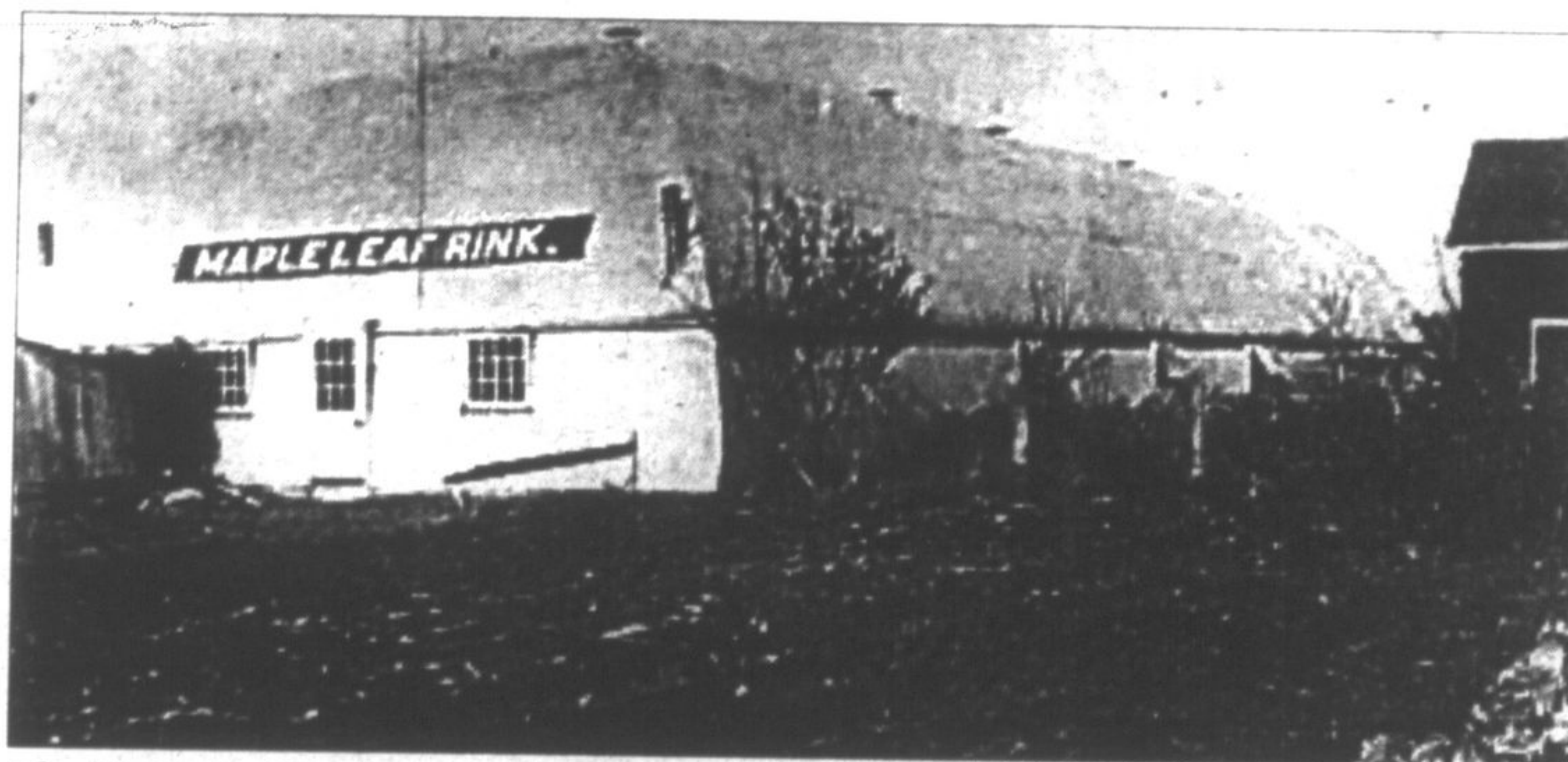
One Saturday afternoon every winter, Ernie Button, a hardware merchant, would treat every child on the rink to a hotdog and soda pop. For many, it was the only bottle of pop they received.

On Dec. 25, 1926, the Clayton Baker Arena opened, which was just two months after its announcement was made.

Located in Memorial Park, where the outdoor pool sits, it became the town's fifth arena.

The parks commission gave free use of the land for two months of summer use.

The Baker Arena was designed for both hockey and recreational skating and was described as having 'superior ice space to that of Markham and Uxbridge rinks for hockey



The Maple Leaf Rink was located north of Main Street between Mill and Church streets.

purposes.'

The arena was used until 1949 when it was dismantled and reconstructed in Cambay.

The Stouffville Athletic Club initiated the development of the Stouffville Arena in 1949. Located in Memorial Park across from where Latcham Hall stands, it became arena No. 6.

People bought shares and had a vested interest in the project that had a goal of \$100,000.

Not wanting to miss an opportunity, the local village council became involved.

In June 1949, council granted a life lease for the land to the Arena Company.

Local government decided to get in on

the action of building arenas and the Recreation Complex, now the Stouffville Arena on Ninth Line, was opened in the mid-1980s at a cost of around \$2 million. The old arena was demolished.

It had just one ice pad until 1996, when a second one was added for \$1 million.

This month, two more ice pads, making them Nos. 8 and 9, opened at the Stouffville Clippers Sports Complex on Weldon Road. The cost of the complex and neighbouring fire hall, which opened last November, was \$24 million.

Fred Robbins is a Stouffville historian.

OVER 100 EXHIBITORS, GUEST SPEAKERS AND HOW-TO DEMOS!

CANADA'S 1ST ZERO WASTE HOME SHOW

MARKHAM ECONOMIST & SUN presents

YORK REGION MEDIA GROUP

Sponsored By: **Craftsman** Custom Built SHUTTERS & BLINDS
www.craftsmanshutters.com



MARKHAM SPRING HOMESHOW

March 19, 20, 21, 2010
Markham Fairgrounds

[McCowan & Elgin Mills]

\$3 adults • \$2 seniors • Children & Parking FREE

Mark Cullen
Featured Speaker

Fri., March 19 @ 5:00pm • Sat., March 20 @ 2:00pm & 4:00pm

www.markhamhomeshow.com