

GIMME SHELTER



STAFF PHOTO/SJOERD WITTEVEEN

Heavy horses sport moustaches as they seek shelter from the biting north wind at a farm along Stouffville Road east of Woodbine Avenue.

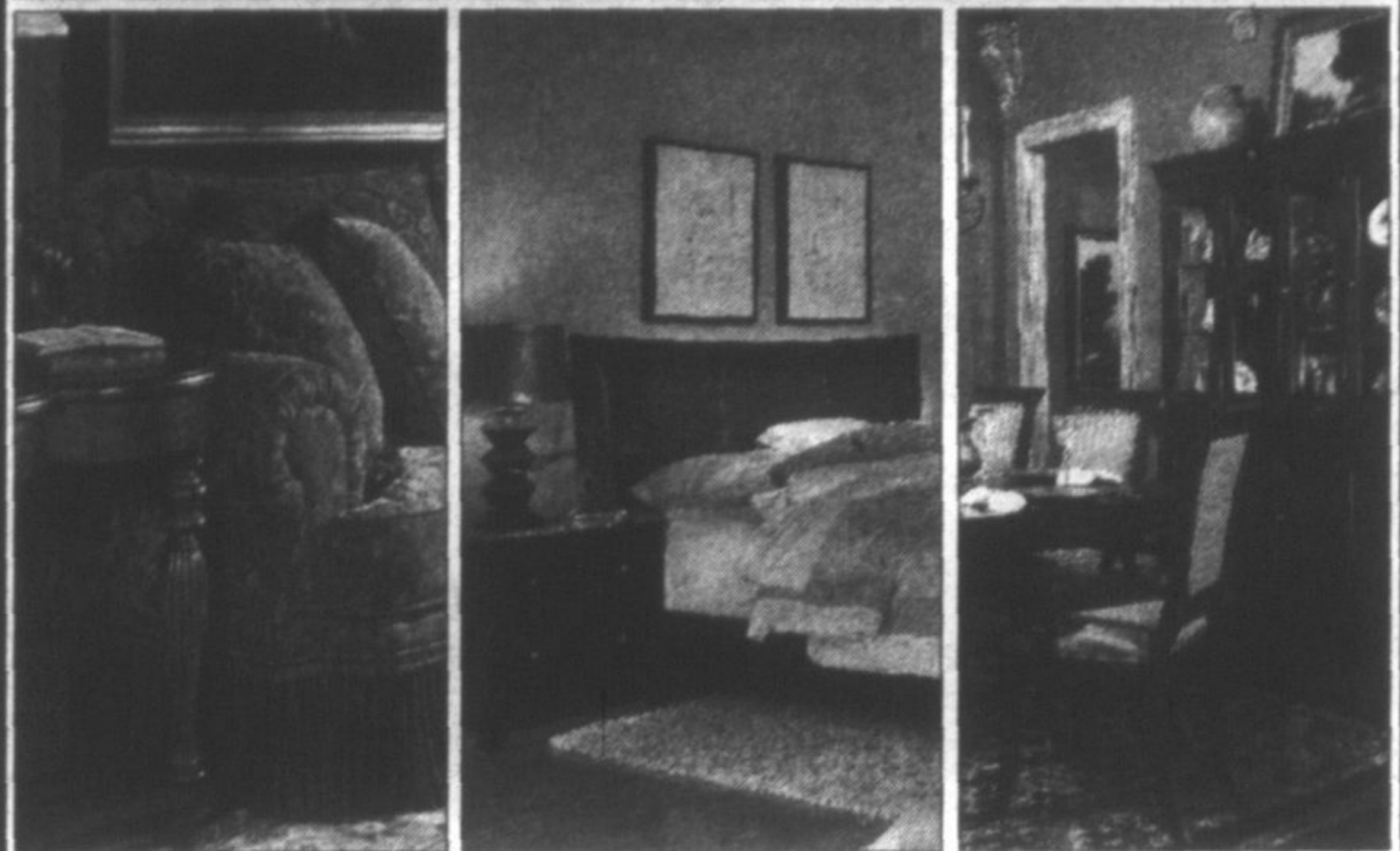
Torchmen singing Sunday

This month's Stouffville United Music concert features the Torch-

men Quartet tomorrow at 7:30 p.m. at Stouffville United Church, Church Street. A free-will offering will be collected.

5 Stouffville Sun-Tribune ■ Saturday, Jan. 30, 2010

Winter Sale

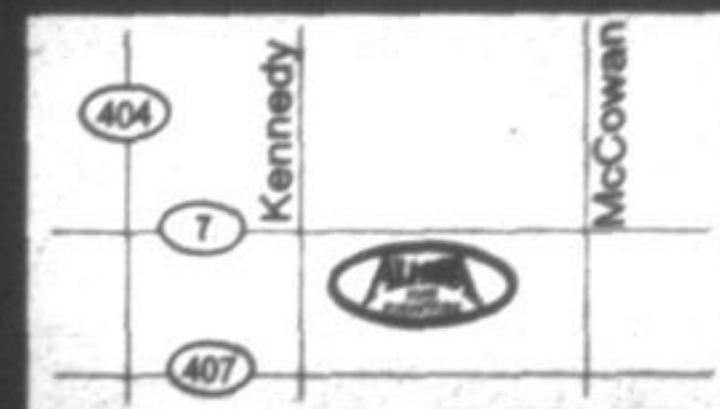


SAVE Up to 60% on Select Display Items
* 25% on Custom Orders *

Dining Room - Bedroom - Upholstery - Plasma Consoles
Occasional - Kitchen Sets - Mattress Sets - Home Office



4747 Hwy #7 East
Markham
905.477.5524
www.almira.com



Mon-Wed 10:00-6:00, Thu-Fri 10:00-9:00, Sat 10:00-5:30



JOIN THE MOVEMENT.
END MS.

Markham - Stouffville
Sunday April 18th, 2010

MS WALK
EVERY STEP MATTERS.

Register at mswalks.ca or 1.888.822.8467



Chatelaine



The BEST in Arts & Entertainment
in Downtown Stouffville

TOMORROW AFTERNOON!
PERFECT for kids ages 5 to 12!



FIZZICAL FIZZICKS - Jan. 31 / 2pm

What do you get when you cross circus skills, science and wacky characters? You get this action-packed show about the science of motion!

Tickets: \$20 regular / \$17 subscriber / \$10 student

NEXT WEEK!

BEST COMEDY - Montreal Fringe Festival



"Chris Gibbs' performance...is near flawless." CBC

ANTOINE FEVAL - Feb. 4 & 5 / 8pm

A dim-witted Englishman becomes the sidekick to detective Antoine Feval, not realizing his partner is robbing the city blind!

Tickets: \$35 regular / \$30 subscriber / \$18 student



WORLD PREMIERE / PRE-TORONTO RUN

sex, pies & a few white lies

(a one-woman-and-a-half, mostly true story)

WRITTEN BY & STARRING MONICA PARKER

Feb. 17, 18, 19 - 8pm / Feb. 20 - 2pm & 8pm

Five (or fifty) pounds too many brings on a menu of psychosis from obsessively stalking bakers to avoiding mirrors to ignoring the judgment of toned gym rats. This show will make you laugh, wince a little and celebrate every single flaw - whatever they may be.

Tickets: \$35 regular / \$30 subscriber / \$18 student

PERFECT FOR A LADIES NIGHT OUT! CONTAINS MATURE SUBJECT MATTER

Call (905) 640-2322 or visit www.townofws.com/nineteen