

### 1.5 million people expected

The passing of York Region's official plan is getting closer with Regional Council's endorsement of updated master plans for transportation and water and wastewater Thursday.

Both plans outline infrastructure planning between now and 2031, by which time the region's population is expected to be 1.5 million.

The total estimated cost of the water and wastewater projects is \$6.6 billion, excluding operation and maintenance for new water-

mains, pumping stations and treatment facilities.

Developed in concert with that is the \$18.3 billion transportation master plan. Much of its price tag, which includes new and widened roads and upgrades to rapid transit, is expected to be picked up by the provincial and federal governments.

Councillors point out that while some major projects, such as Viva and the Spadina subway, already have funding in place others, such as the Yonge subway extension, are in limbo.

You can learn more about both plans at [www.york.ca](http://www.york.ca)

## Salvation Army donations help kids, families

From page 1.

"We're still going to provide the meal and socialization and a gift. But we're prepared for maybe having to go shopping on the 23rd."

Since 1982, Blue Door Shelters has been providing essential emergency shelter service, food and supportive counselling. The majority of financial support comes from the region and United Way of York Region. Still, public generosity is a welcome and necessary pillar, executive director Patti Bell said.

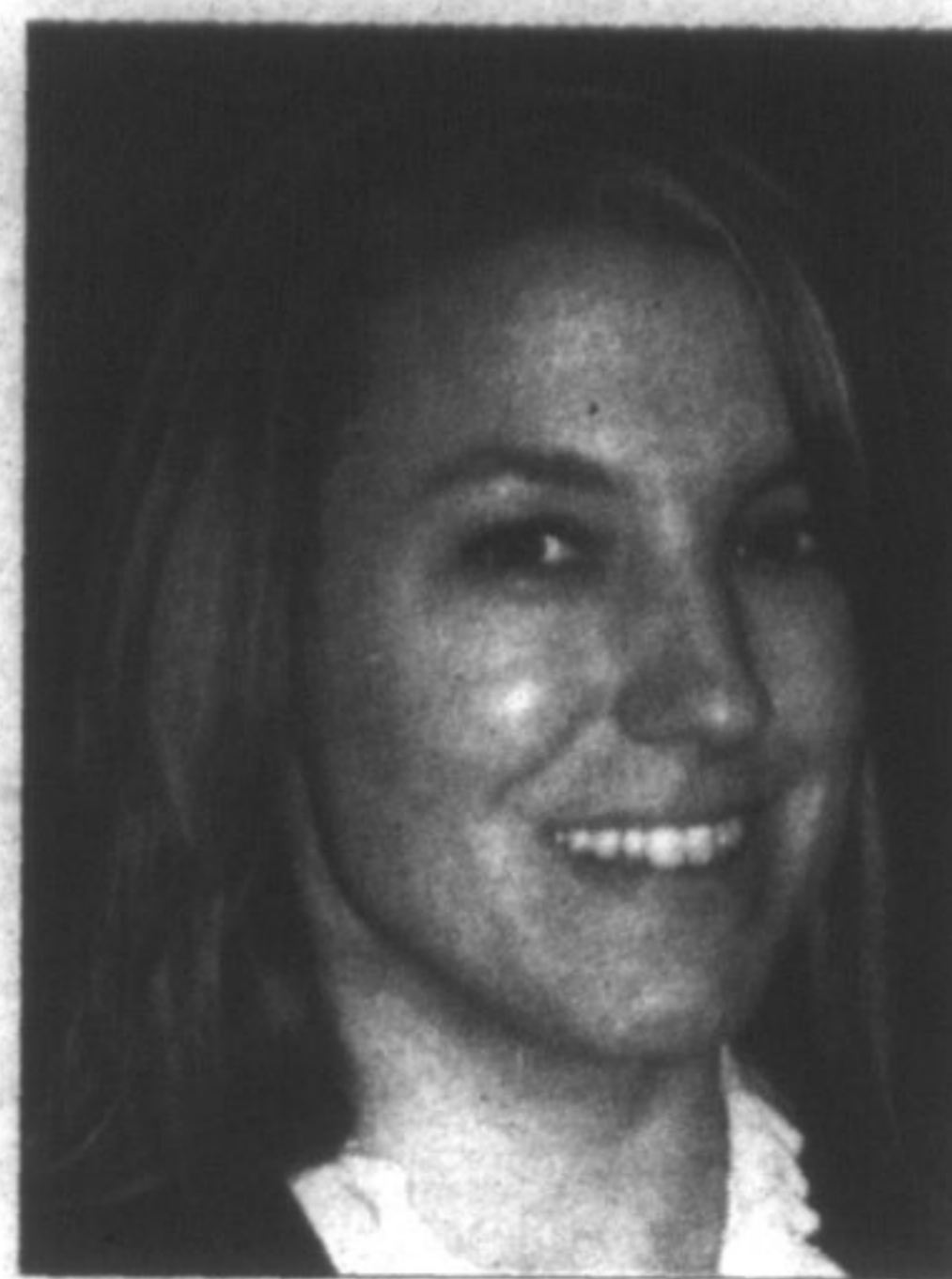
"We're experiencing fewer corporate donations and individual giving is down," she said. "The region and United Way is very supportive. So far, compared to our last fiscal, (public) donations have dropped. If the pattern holds true, we'll see fewer individual donations with less amounts."

Surprisingly, Blue Door Shelters has experienced more largesse from faith groups, Ms Bell said.

"It's remarkable," she said. "They're really stepping up to the plate and recognizing the need in our community."

Demand for help was illustrated in early autumn. A new 15-suite family shelter opened Sept. 25.

"By the second week we were full with 60 people and it's remained that way," she said.



**TANYA SHUTE:** Krasman Centre executive director confirms philanthropic momentum has slipped.

In a time where need seems greater than ever before, the Salvation Army's Christmas kettle campaign, Nov. 19 to Dec. 24, returns to spread some holiday cheer.

"Demand is up some 30 per cent," community and family services coordinator Kim Morrison said.

"People are coming to us with deeper needs than in previous years."

Accordingly, kettle volunteers aim to fill donation boxes to the brim and surpass last year's total of \$109,000.

Aside from gifts and food, money

raised by the Salvation Army goes to crisis intervention, sponsors children to attend camps, pays for recreation programs for children from low-income families and buys emergency clothing.

"It's too soon to tell if there will be a shortfall or not," said Ms Morrison, who is responsible for Salvation Army initiatives in Richmond Hill and Maple. "Donations affect programs in 2010. We need to have faith that it will all come together."

Statistics Canada said the median donation among Canadians stood at \$250 in 2008, the same as 2007.

For the ninth straight year, the most generous donors were those of Nunavut, with a median donation of \$500, the agency said.

Donors in Prince Edward Island had the second highest median at \$370, followed by Alberta with \$360.

To donate funds, gifts or volunteer hours contact:

- Krasman Centre, 10121 Yonge St., Richmond Hill, Ont., L4C 1T7, 905-780-0491 or visit [www.krasmancentre.com](http://www.krasmancentre.com) on line

- Blue Door Shelters, 835 Gorham St., Newmarket, Ont., L3Y 1L7, 905-830-0121 or visit [www.blue-doorshelters.ca](http://www.blue-doorshelters.ca) on line.

- Salvation Army, 905-737-0496 or visit [www.salvationarmy.ca](http://www.salvationarmy.ca) on line.

**RON JAMES**

"a comedic tour de force" - Globe & Mail  
★★★★★ - Ottawa Sun

[www.shantero.com](http://www.shantero.com) [www.ronjames.ca](http://www.ronjames.ca)

**MARKHAM THEATRE**  
Thursday & Friday, Feb. 25 & 26 - 8:00 pm  
Reserved Seating: \$54.00  
(plus \$3.50 s/c, tax incl.)  
Box Office:  
**905 305-7469 / 866 768-8801**  
[www.markhamtheatre.ca](http://www.markhamtheatre.ca)

**ON SALE THIS MON NOV 23!**

# This is my car!



Wheels.ca – smart tools for smart buyers, backed by relevant expert editorial. Visit Ontario's fastest growing automotive website today!

**Shop. Compare. Drive.**

Find yours at  
**Wheels.ca**