

# E-books big at library

From page 1.

was up 27 per cent this past summer, according to the Ontario Library Association.

Locally, circulation has increased eight per cent from 104,802 in 2008 (January to August) to 114,038 during the same time span this year. Participation in the summer reading program jumped by 13.4 per cent.

"In bad economic times, library use increases," Ms Sword said. "The bad times may have brought them in, but when times get better we don't lose them because they realize what a good thing we have."

Yes, there are lots of printed books to be found in the library, but they are not just the out-of-date-the-minute-they-are-written reference books, there are current best sellers and oldies but goodies — fiction and non-fiction.

There are also a lot of electronically-based offerings such as e-books, which are electronic text-based books read on a computer or handheld device. When they were introduced a few years back, they were lamented as a major blow to the library system.

However, instead of fearing the e-book, libraries, including Whitchurch-Stouffville, embraced them and provide them alongside the old-school paperbacks.

The library also offers books on CD and some titles can be downloaded to an MP3 player.

The willingness to offer more than just printed books enables the library to broaden its reach. For example, visually impaired residents can enjoy the latest Stephen King release right along with sighted people because it is also available in an audio format, while people who are not that mobile, don't have to worry about getting to the library to borrow a book because they can download it for free onto their computer through the net-library.

Other electronic offerings include everything from the catalogue to auto repair manuals, career information and consumer reports.

"People hear electronic and think Internet," Ms Sword said. "And what people don't realize is that I'm talking about credible sources all packaged together so you don't have to do the Wild West search."

For example, Career Cruising provides information on potential careers via a questionnaire and has job-searching capabilities across Canada.

The consumer health portal has information on more than 1,000 drug journals and 2,700 patient fact sheets.

For people who still love the sound of a book's spine cracking open for the first time, the library still has those, as well as an e-mail alert program called Next Reads.

"They get this list at home once a month and if you (find a book you like, based on inputted data) click on the library link and see if it's available," Ms Sword said.

## Reading celebrated

October is Canadian Public Library Month and Oct. 19 to 25 is

Ontario Public Library Week. The Whitchurch-Stouffville Public Library is at 30 Burkholder St., Stouffville. Call 905-642-

READ(7323) or go to whitchurch-library.on.ca

Events include: Food for Fines

Bring in an overdue item and a non-perishable food item and charges for this item will be waived.

**Ford**  
**2010 RIGHT HERE RIGHT NOW EVENT**

**NO EXTRA CHARGE**  
**WINTER SAFETY PACKAGE\***  
YOU CAN'T PUT A PRICE ON SAFETY. SO WE DIDN'T.

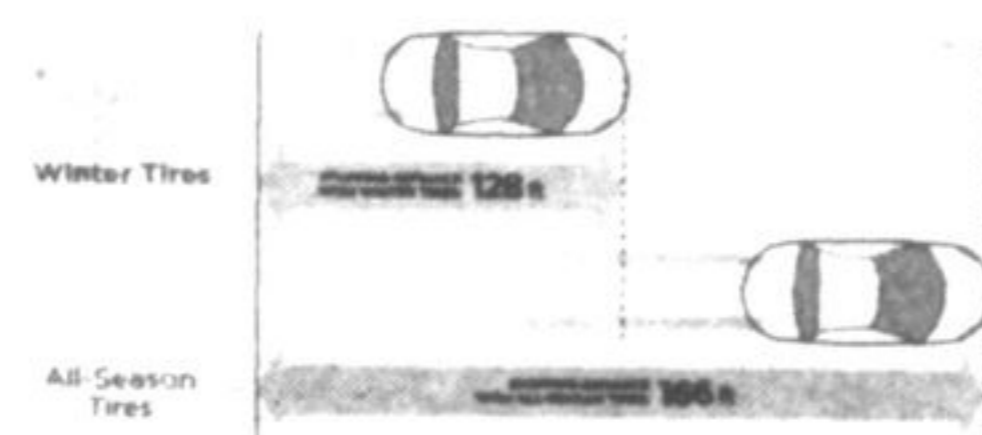
FOR A LIMITED TIME ONLY

GET A NO EXTRA CHARGE WINTER SAFETY PACKAGE FROM YOUR ONTARIO FORD STORE WITH THE PURCHASE OR LEASE OF ALL 2009 AND 2010 FOCUS, ESCAPE, OR FUSION.

Safety package includes select brand name winter tires, winter rims, and a tire pressure monitoring system.

**NO EXTRA CHARGE 4 WINTER TIRES**

Winter tires allow for better traction, handling, and braking on snow and ice. This improved grip allows for 23% shorter stopping distance versus all-season tires.

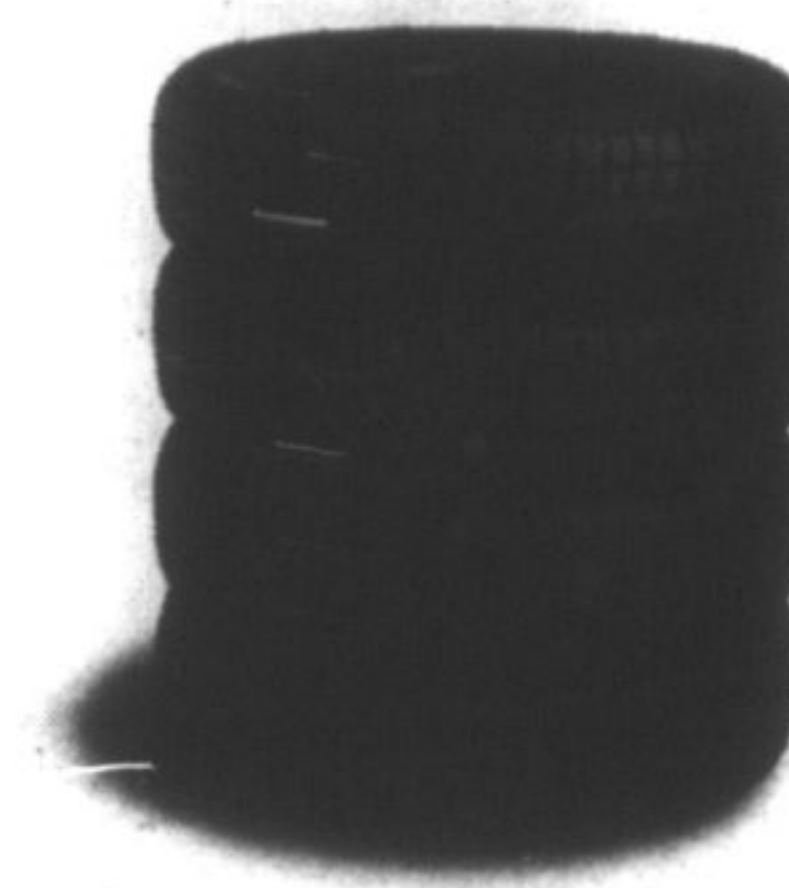


**NO EXTRA CHARGE TIRE PRESSURE MONITOR SYSTEM**

This system will warn you if your tires require inflation. Proper inflation ensures a longer life for your tires, improves fuel-economy, and allows them to perform optimally and safely.

**NO EXTRA CHARGE 4 RIMS**

Protect your aluminum or chrome wheels and install winter rims. They're designed by Ford engineers to fit your Ford vehicle perfectly.



2010 Ford Focus SE  
OWN FOR ONLY

**\$138 @ 3.99%<sup>†</sup>**  
APR

Twice a month financed over 72 months with \$0 Down. Offer excludes freight.

OR GET **0%<sup>†</sup>** APR Up To **48** Months

On Most 2010 Focus models.  
50 mpg and 6.9L/100km (hwy)\*\*  
33 mpg and 8.5L/100km (city)



2010 Ford Escape XLT  
OWN FOR ONLY

**\$21,999<sup>†</sup>**  
offer excludes freight.

**Canada's Best Selling Compact SUV\*\***



2010 Ford Fusion SE  
OWN FOR ONLY

**\$178 @ 3.99%<sup>†</sup>**  
APR

Twice a month financed over 72 months with \$0 Down. offer excludes freight

OR GET **0%<sup>†</sup>** APR Up To **48** Months

On Most 2010 Fusion models.

41 mpg and 6.9L/100km (hwy)\*\*  
30 mpg and 9.4L/100km (city)

**HURRY IN FOR YOUR NO EXTRA CHARGE WINTER SAFETY PACKAGE. ONLY AVAILABLE UNTIL NOVEMBER 13<sup>TH</sup> FROM YOUR ONTARIO FORD STORE.**

ontarioford.ca

**Ford Drive one.**

\*Receive a winter safety package which includes: four (4) Winter Tires, four (4) steel rims, and one (1) Tire pressure monitoring system when you purchase, purchase finance or lease any new 2009 or 2010 Ford Focus / Fusion / Escape on or before November 13th 2009. If a consumer chooses to opt out of the no extra charge winter safety package they will qualify for \$300 in additional delivery allowance applied to the purchase, purchase finance or lease price of a new 2009 or 2010 Ford Focus/Fusion/Escape. This offer is not applicable to any Fleet (other than small fleets with an eligible FPO) or Government delivery and not combinable with CPA, GPC, FIP or Daily Rental Allowances. Some conditions apply. See Dealer for details. Vehicle handling characteristics, tire load index and speed rating may not be the same as factory supplied all season tires. Winter tires are meant to be operated during winter conditions and may require a higher cold inflation pressure than all season tires. Consult your Ford of Canada dealer for details including applicable warranty coverage. \*\*2009 A.P.R. purchase financing on new 2010 Ford Focus (excluding S) / Fusion (excluding S and Hybrid models) for a maximum of 48 months to qualified retail customers, on approved credit (DAC) from Ford Credit. Not all buyers will qualify for the lowest APR payment. E.g., \$20,000 purchase financed at 0% P.A.P.R. for 48 months, monthly payment is \$416.67, cost of borrowing is \$0 or P.A.P.R. of 0% and total to be repaid is \$20,000. Down payment on purchase financing offers may be required based on approved credit. †Purchase finance a new 2010 Ford Focus SE Sedan with manual / Ford Fusion SE Manual with 3.99% APR purchase financing for 72 months to qualified retail customers, on approved credit (DAC) from Ford Credit. Not all buyers will qualify for the lowest APR payment. Purchase financing monthly payment is \$276/\$356 (Monthly payment divided by two gives payee a twice monthly payment of \$138/\$178) with a down payment of \$0 or equivalent trade-in. Cost of borrowing is \$2,173/\$2,833 or APR of 3.99% and the total to be repaid is \$19,827/\$25,652 (after delivery allowance of \$0 deducted). Taxes payable on full amount of purchase price after price adjustment is deducted. Twice a month payments are only available through internet banking and telephone banking, if offered by your financial institution. The customer is required to sign a monthly payment contract and to ensure that the total monthly payment occurs by payment due date. Twice a month payments can be made by making two (2) payments of 50% of the monthly payment by the monthly payment due date. Dealer may sell for less. Down payment on purchase financing offers may be required based on approved credit. †Purchase a 2010 Ford Escape XLT 4 Manual for only \$21,999. Taxes payable on full amount of purchase price (after Delivery Allowance of \$2,500 deducted). All offers exclude freight (2010 Escape/2010 Fusion/2010 Focus freight of \$1,400/\$1,350/\$1,350), license, and insurance, registration, PPSA, Fuel Fill charge, administration fees and all applicable taxes. \*\*Fuel efficiency figures based on the Ford Motor Company (Canada) 2009 ratings. Actual fuel consumption may vary based on road conditions, vehicle loading, and vehicle equipment and driving habits. \*\*Based on 2008 combined sales figures from Dealers Automotive Consultants Inc. (DAC), Association of International Automobile Manufacturers of Canada (AIAMC), and Canadian Vehicle Manufacturers' Association (CVMA). Dealer may sell or lease for less. Offers are subject to change and may be cancelled at any time without notice. See dealer for details. ††