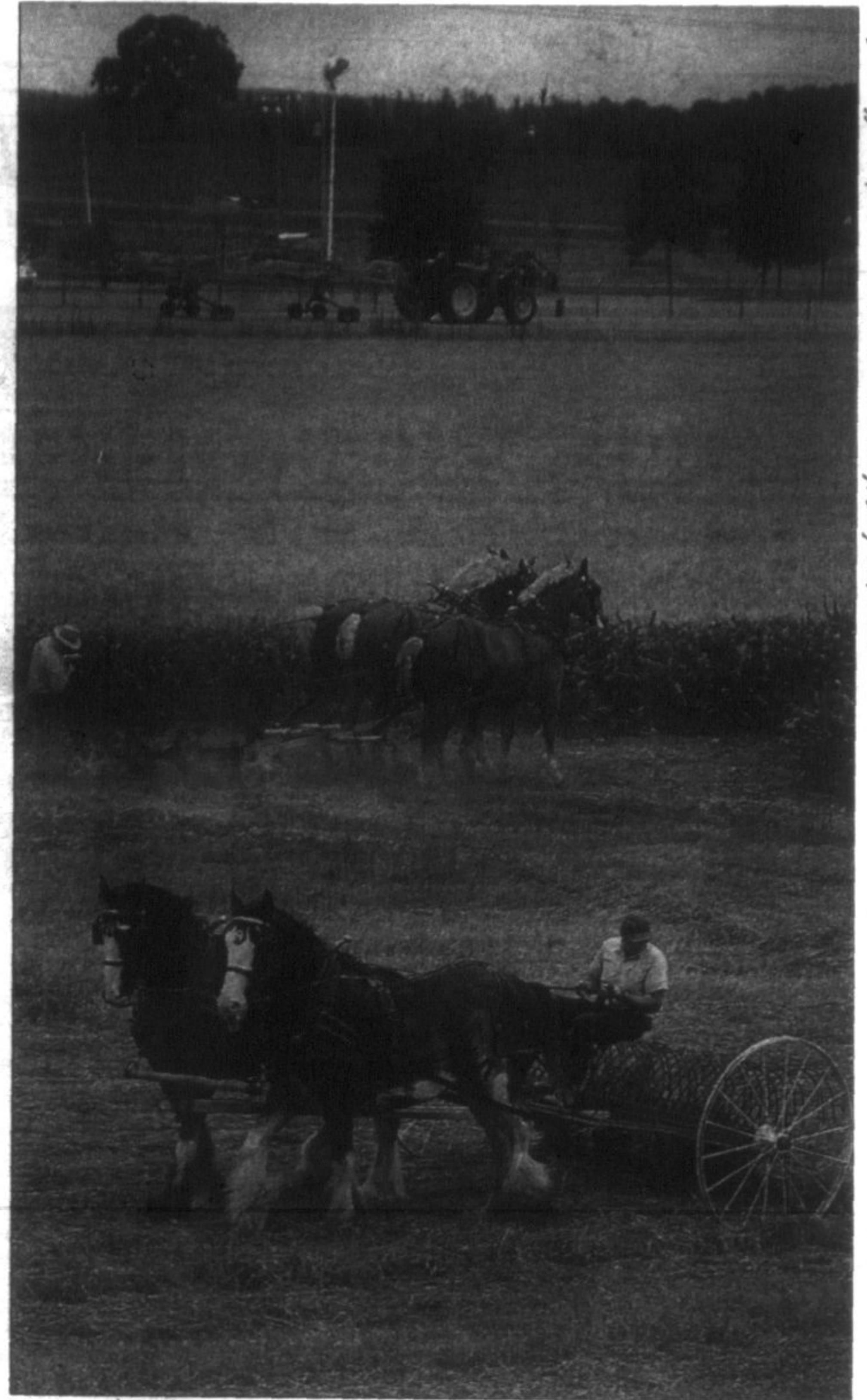




Ted English guides his triple team of Belgians with the binder through a field of wheat during Gord and Harry Lewis' demonstration of old farm machinery on the Lewis Farm on McCowan Road in northern Markham last week.



As a modern tractor drives by on McCowan Road, Ted English uses his team of Belgians and a plough and Steve Lewis works a dumprake with his Clydesdales.

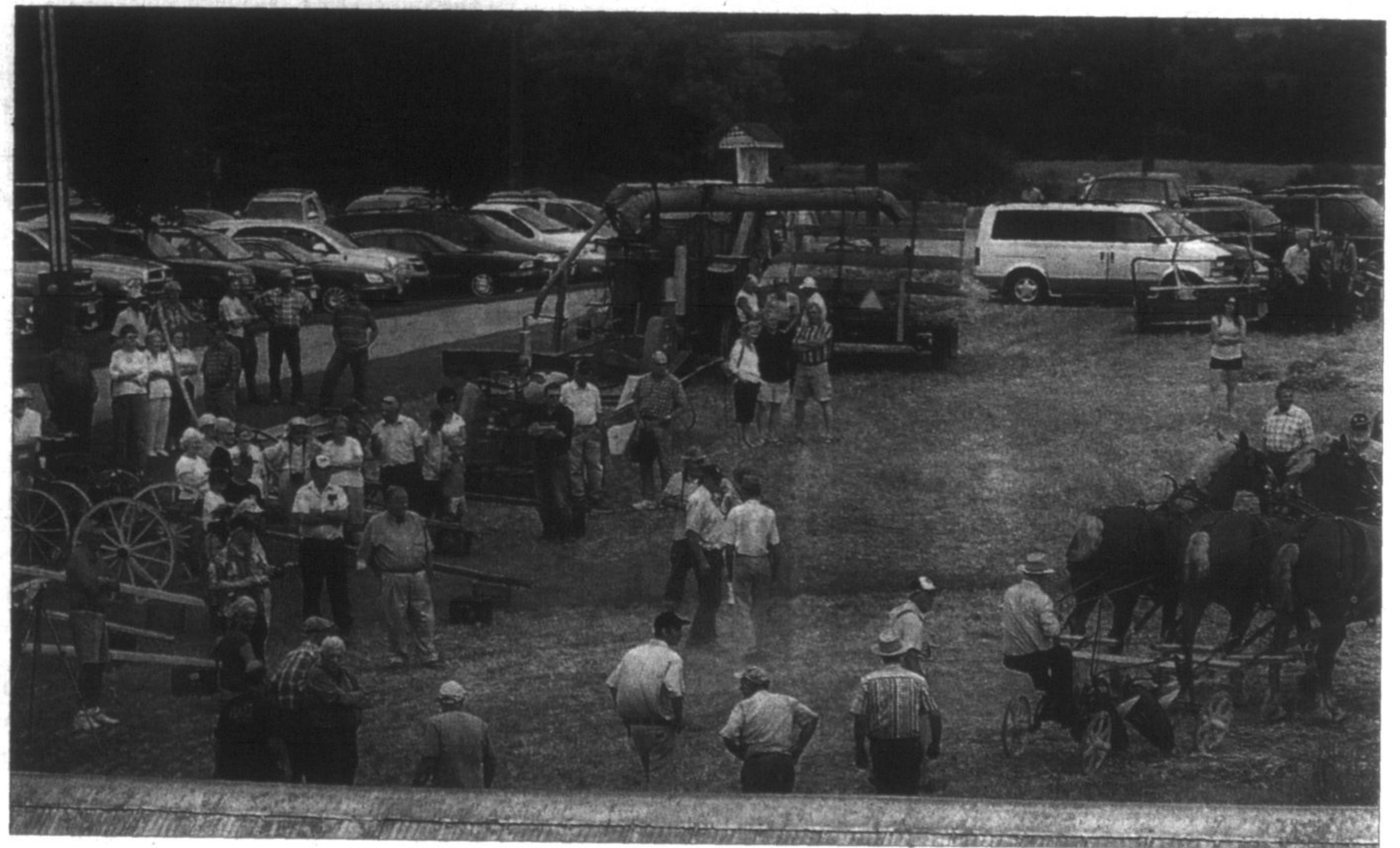


Lynda Goodwin brings in the sheaves at the annual event.

## Horse power

*Farmers from the Markham and Stouffville area turn the clock back with some four-legged help*

PHOTOGRAPHY BY SJOERD WITTEVEEN



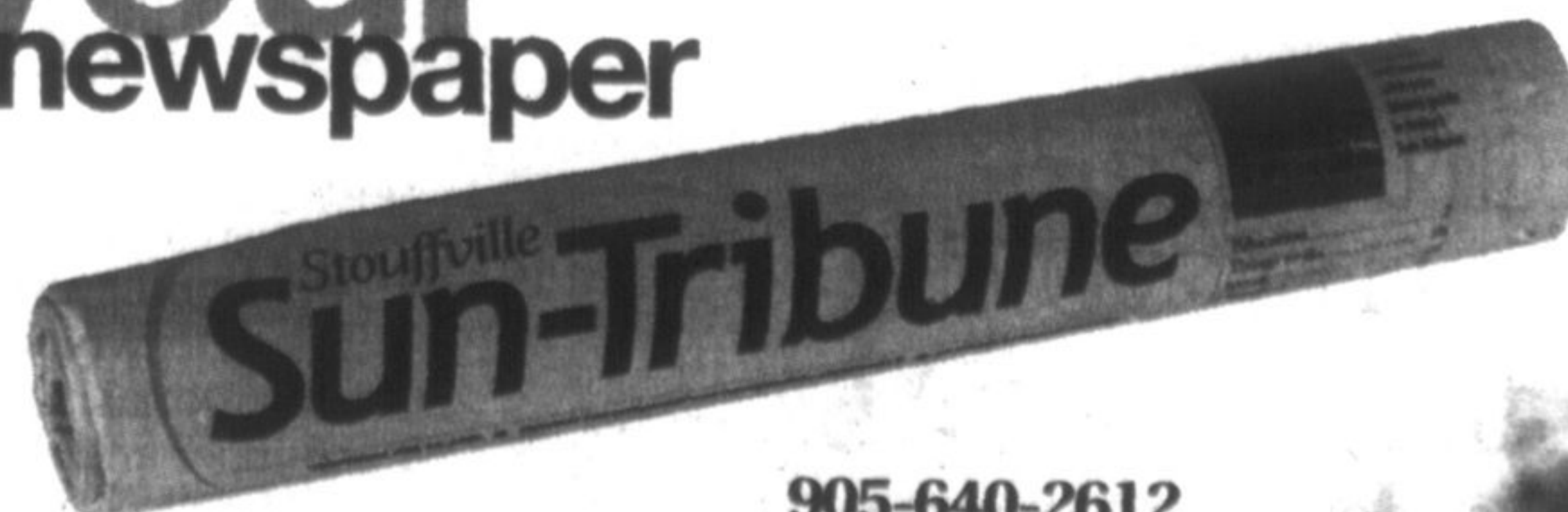
Area farmers check out the old farm machinery. See Jim Thomas column, on page 7, for more information.

*"It definitely makes me feel more informed about the community in which I reside."*

"I enjoy receiving and reading each issue of the Stouffville Sun-Tribune. It definitely makes me feel more informed about the community in which I reside."

CONNECTING TO YOUR COMMUNITY  
YOUNG READERSHIP SURVEY, 2008

**YOUR**  
newspaper



905-640-2612

