

For the latest information, visit us at chevrolet.com.ca, drop by your local Chevrolet Dealer or call us at 1-800-GM-DRIVE. *\$6,500 is a manufacturer to dealer delivery credit (tax exclusive) available on cash purchases of 2009 Chevy Silverado/GMC Sierra 1500 pickups. **\$1,000 is a manufacturer to consumer incentive (tax inclusive) and is reflected in offers in this advertisement. Example: \$10,000 purchase price, after tax price is \$11,200 (\$10,000 plus \$1,200 applicable taxes). After applying \$1,000 credit, after tax price is \$10,200. (2009 model year vehicles only. See dealer for details.) ***Offer applies to current owners of any GM vehicle. Example: \$10,000 purchase price, after tax price is \$11,200 (\$10,000 plus \$1,200 applicable taxes). After applying \$1,000 credit, after tax price is \$10,200. (2009 model year vehicles only. See dealer for details.) ****Offer applies to current owners of any GM vehicle. Example: \$10,000 purchase price, after tax price is \$11,200 (\$10,000 plus \$1,200 applicable taxes). After applying \$1,000 credit, after tax price is \$10,200. (2009 model year vehicles only. See dealer for details.) *****Offer applies to current owners of any GM vehicle. Example: \$10,000 purchase price, after tax price is \$11,200 (\$10,000 plus \$1,200 applicable taxes). After applying \$1,000 credit, after tax price is \$10,200. (2009 model year vehicles only. See dealer for details.)

another step in our reinvention

a simple **clearance**
up to **\$8,500** cash credit*



MPG 24/31/40 - 20 MPG
CITY 1.8L/100KM - 28 MPG

★★★★★
FIVE-STAR SAFETY RATING*

Aveo 5-door LS model shown with PG9 and UE1**

2009 CHEVROLET AVEO LT

STARTING FROM \$10,745*
\$12,495*

VALUE LEADER CASH PURCHASE PRICE
Offer Includes \$1,000 Loyalty Bonus Available to current GM owners.*

INCLUDES
\$3,125
CASH CREDIT

- Value Leader Includes:**
- Your choice of 5-door or Sedan • Sunroof • Air Conditioning
 - AM/FM/CD with MP3 Playback • Auxiliary Audio Input Jack
 - Power Windows/Locks/Mirrors • Remote Keyless Entry System
 - Cruise Control • 60/40 Split-Folding Rear Seat • Heated Side Mirrors • OnStar® with 1 year of the Safe and Sound Plan*



MPG 24/31/40 - 20 MPG
CITY 1.8L/100KM - 28 MPG

★★★★★
FIVE-STAR SAFETY RATING*

Cobalt SS Coupe model shown with 29U**

2009 CHEVROLET COBALT LT

STARTING FROM \$10,995*
\$13,995*

VALUE LEADER CASH PURCHASE PRICE
Offer Includes \$1,000 Loyalty Bonus Available to current GM owners.*

INCLUDES
\$4,000
CASH CREDIT

- Value Leader Includes:**
- Your choice of Coupe or Sedan • 4-Speed Automatic Transmission • Power Windows/Locks/Mirrors • Air Conditioning
 - Remote Keyless Entry System • 4-Wheel ABS Brakes
 - 16-in. Aluminum Wheels



MPG 24/31/40 - 20 MPG
CITY 1.8L/100KM - 28 MPG

★★★★★
FIVE-STAR SAFETY RATING*

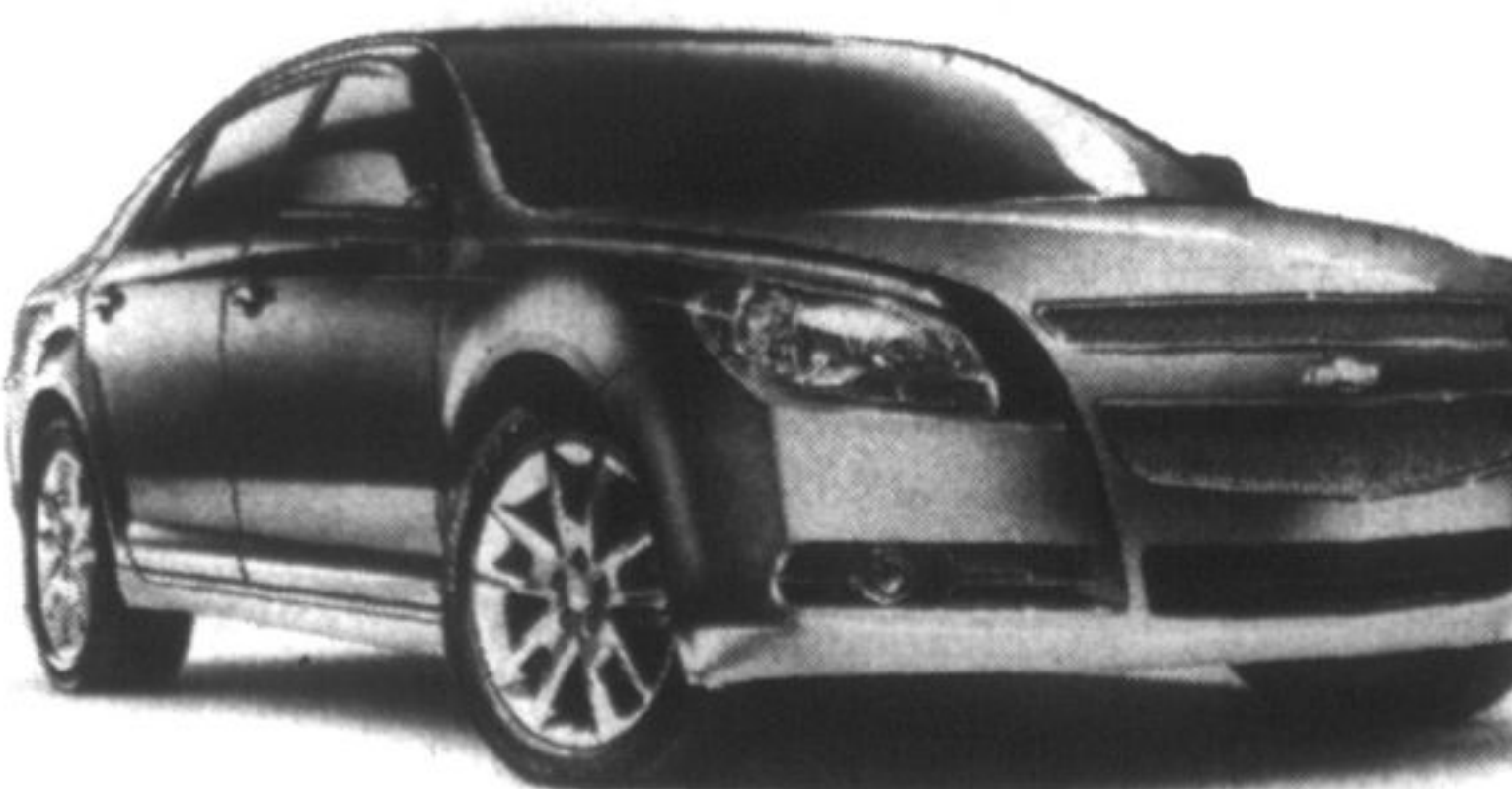
2009 CHEVROLET HHR

\$15,895*

VALUE LEADER CASH PURCHASE PRICE
Offer Includes \$1,000 Loyalty Bonus Available to current GM owners.*

INCLUDES
\$3,400
CASH CREDIT

- Value Leader Includes:**
- Air Conditioning • StabiliTrak™ Electronic Stability Control System
 - 16-in. Wheels • Auxiliary Audio Input Jack • Cruise Control
 - 60/40 Split-Folding Rear Seat • Power Windows & Locks
 - Remote Keyless Entry System



MPG 24/31/40 - 20 MPG
CITY 1.8L/100KM - 28 MPG

★★★★★
FIVE-STAR SAFETY RATING*

Malibu LTZ shown.**

2009 CHEVROLET MALIBU

\$19,995*

VALUE LEADER CASH PURCHASE PRICE
Offer Includes \$1,000 Loyalty Bonus Available to current GM owners.*

INCLUDES
\$3,000
CASH CREDIT

- Value Leader Includes:**
- 2.4 L ECOTEC 4-cylinder VVT 169 hp. • 17-in. Wheels • 4-Speed Automatic Transmission • Power Windows/Locks/Mirrors • Air Conditioning • 6-Speaker Premium Sound System • Cruise Control
 - OnStar® with 1 year of the Directions and Connections Plan*

ask your dealer about our **fully backed Warranty** or **0%** on select purchase* financing models

visit: ontariochevroletdealers.com

GM Canada
THE BEST COVERAGE IN CANADA
5 YEARS POWERTRAIN COMPONENT LIMITED WARRANTY
160,000 KM* ROADSIDE ASSISTANCE
COURTESY TRANSPORTATION

GREEN by DESIGN
GM HAS MORE VEHICLES WITH 7.0/100KM (40 MPG) OR BETTER HIGHWAY FUEL CONSUMPTION THAN ANY OTHER AUTOMAKER.
greenbydesign.gm.ca

STUDENT RIBBON
GM pays the first 2 monthly payments*

