

Expand library, amalgamate seniors centres: report

From page 1.

Stouffville Memorial Park and move it adjacent to the Lebovic Leisure Centre (2011 - 2014)

- expand the Lebovic Leisure Centre (2012)

- build a second fitness/wellness centre with an indoor pool and indoor track (2013 - 2014)

- add two lit soccer pitches to Bethesda Park (2013)

- approximately seven mini soccer fields will be required (after 2010)

- refurbish ball diamond No. 1 and Memorial Park's grandstand (2010)

- refurbish the five-pitch ball diamond at Thicketwood Parkette (2010 - 2014)

- retire the existing Ballantrae and Silver Jubilee facilities for seniors and create one dedicated location (2010 - 2012)

"This facility should be built as part of the integral use building, i.e. Lebovic Leisure Centre, where cross-over programming opportunities exist and utiliza-

tion of multipurpose rooms can occur for specialized programming requirements," according to the report.

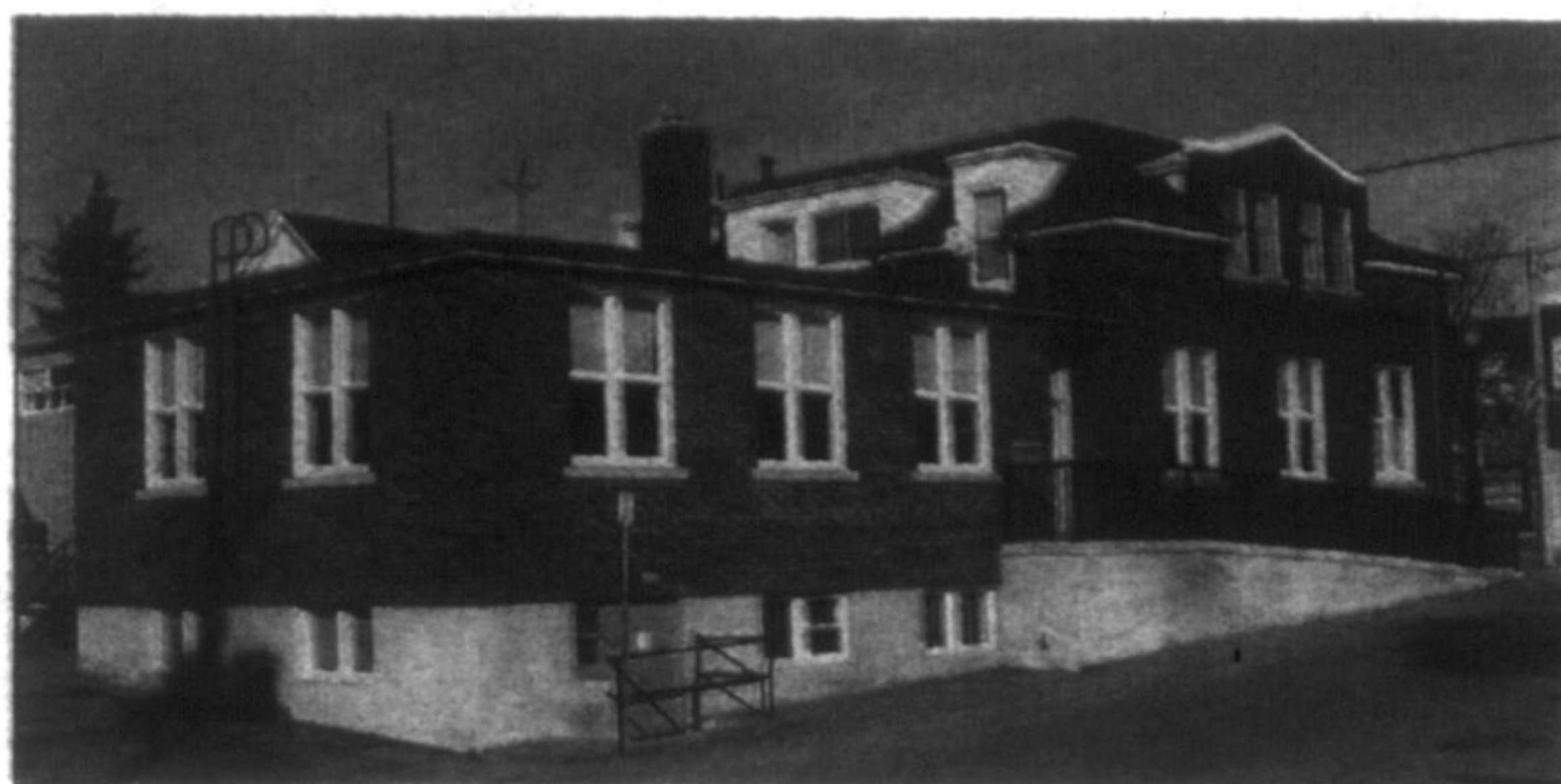
The study also noted a total of 42,400 square feet of multipurpose space will be required by the time Whitchurch-Stouffville reaches full build-out. There is currently 25,000 square feet available.

The facilities study was one of four components that make up the leisure service master plan. The other components, which still need to be completed, are a cultural master plan/strategy, volunteer engagement strategy and leisure programming strategy.

"The need for a program review is really necessary," said Dave Cash, the town's chief administrative officer. "It doesn't make sense for us to build space if we don't have a comprehensive look at all programming needs."

That report is expected to be done by the end of this year.

Also included in the strategy report was the Whitchurch-



STAFF PHOTO/JIM MASON

The Silver Jubilee Club would give way to a new seniors centre.

Stouffville library, which it stated will require an additional 7,119 square feet of space by 2023 if it is to remain in line with the provincial guideline of 0.65 square feet of gross floor area per capita.

"The consultants believe that the 0.65 square feet gross floor area per capita represents a standard that will maintain the current level of service and reflects the requirements of the community," according to Mr. Raycroft's summary report.

The strategy also recommended there be only one central library and that it be integrated with other town facilities in order to maximize space efficiencies.

"The original premise, dating back to 2004, was the creation of a satellite facility in Ballantrae at approximately 6,600 square feet in size. By maintaining a central facility, staff believe that overall space allocations may be reduced through building efficiencies," according to the report.

Less interest predicted for your team sports, guys

Leisure trends, according to rethink group. Interest will gradually be lessened and may even decline for:

- many team sports and large group activities
- many rugged, strenuous activities
- activities with fitness-only focus, as opposed to holistic wellness
- consumptive activities like hockey in the summer
- indoor pursuits, other than at home

Interest in the following areas will subsequently increase:

- gentler, more passive activities
- individualistic, self-directed, self-scheduled pursuits
- activities that support flexibility and convenience
- pursuits that provide a cultural experience
- casual, informal pursuits that take less time
- team and personal sports for women and girls

Learning Disabilities?

If you or your child suffers from LEARNING DISABILITIES then attending this free symposium may be the most important thing you do this year. You will discover the true cause of these conditions and natural solutions and options you can use right away to overcome them.

Many children and adults with ADD and Dyslexia have seen significant improvement without medication. Dr. Turner is an international speaker and lecturer who has been featured on the *Dini Petty Show*, *National News*, *Canada AM*, *CFTO News*, *Marilyn Denis CITYLINE* and *Riley Live*. He will present a free symposium on Thurs. Mar. 19th at 7:30 pm at the Stouffville Health Centre, 6219 Main Street.

Call 905-640-4440 to reserve your seats today!



Stouffville Clinic
of Naturopathic Medicine

Breast Thermography Clinic

Saturday, March 21st
9-3pm

Thermography is a non-invasive screening tool for assessing breast health.

FOR INFORMATION CONTACT:

Dr. Brandy Pridham ND.

904.642.8555

37 Sandiford Dive, Suite 105



Are you a victim of impaired driving?

We're here to help.

MADD Canada

Tel.: 1-800-665-MADD



MADD

Mothers Against Drunk Driving
Les mères contre l'alcool au volant

www.madd.ca

HOUSTON FORD HUGE SAVINGS ON FOCUS!

GREAT COLOUR AND MODEL SELECTION



OUR PRICE \$21,655



OUR PRICE \$19,476



OUR PRICE \$18,068



OUR PRICE \$19,776



OUR PRICE \$19,776

WITH 0%
FINANCING
AVAILABLE

up to 60 mths OAC

BILL HOUSTON FORD LTD.

5786 Main St. S., Box 1589

Stouffville, Ontario L4A 8A4

E:info@billhouston.com • W:www.billhoustonford.com

905-640-4541



To advertise your business call your local
Stouffville Sun-Tribune Advertising Consultant
at 905-640-2612