



Town of
WHITCHURCH-STOUFFVILLE
"Country Lifestyle Close to the City"

Town Office: 905-640-1900 OR 905-895-2423
Museum: 905-727-8954 OR 1-888-290-0337

www.townofws.com

Lebovic Leisure Centre: 905-642-PLAY(7529)
Public Library: 905-642-READ(7323)

NOTICE OF CANCELLATION OF COUNCIL MEETING

THE COUNCIL MEETING SCHEDULED FOR TUESDAY FEBRUARY 17TH, 2009 HAS BEEN CANCELLED

PUBLIC NOTICE

2009 INTERIM PROPERTY TAX BILLS
1st Installment Due - February 20, 2009
2nd Installment Due - April 24, 2009

INTERIM TAX bills have now been mailed. Ratepayers who have not received their bills should contact the Municipal Tax Department as soon as possible. Failure to receive a tax bill does not eliminate the responsibility for payment of taxes or the penalty charges for late payment.

TAX PAYMENTS may be made by mail, or in person at the Town Office, 37 Sandiford Drive, 4th Floor, and at most Financial Institutions through tellers, banking machines and by telephone and Internet banking. Banking fees may apply. After hours, tax payments may be made in the drop box at the front west entrance door at 37 Sandiford Drive.

APPEALING THE CURRENT MARKET VALUE ASSESSMENT on your property must be done before the deadline of **March 31, 2009**. Please direct questions regarding assessments to the Municipal Property Assessment Corporation (MPAC) at 1-866-296-6722. Appeal forms are available at the Town offices.

VACANCY REBATE APPLICATIONS are available at the Town offices during business hours, for any commercial or industrial properties that have been vacant for 90 consecutive days. The deadline for submitting the application for the 2008 taxation year is **February 27, 2009**.

PUBLIC NOTICE

The Town of Whitchurch-Stouffville Municipal Office & Library will be closed Monday February 16th, 2009.

For Public Works/Leisure Services Emergencies please call 1-800-997-9377

FIRE & EMERGENCY RESPONSE: 911

The Lebovic Leisure Centre is open from 8:00 a.m. - 2:00 p.m.

ALL REGULAR PROGRAMS ARE CANCELLED
For information, please call 905-642-PLAY (7529)

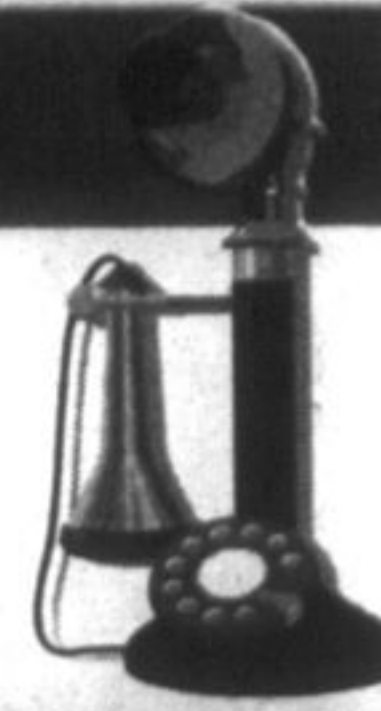
FAMILY DAY ACTIVITIES:

FITNESS SCHEDULE LEBOVIC LEISURE CENTRE	
8:30 - 9:30 a.m.	Vari Training
9:35 - 10:35 a.m.	Gentle Fit
POOL SCHEDULE LEBOVIC LEISURE CENTRE	
9:05 - 10:00 a.m.	Aquafit
10:05 - noon	Leisure Swim
12:05 - 1:00 p.m.	Lane Swim
PUBLIC SKATE STOUFFVILLE ARENA	
2:00 - 4:00 p.m.	
MUSEUM 905-727-8954 1-888-290-0337	
10:00 a.m. - 4:00 p.m.	

The Municipal Office reopens on Tuesday February 17th, 2009 at 8:30 a.m.

DID YOU KNOW?

The Town has added additional phone lines to provide better customer service. For faster service, try the Town's automated line. Dial 905-640-1910 then enter your party's extension number to be directly connected.



RECRUITMENT

The Town is now accepting applications for various positions within its 2009 Spring/Summer operation. Hours of work per week may vary.

Leisure Services Department

- Day Camp Counselor
- Day Camp Supervisor
- Day Camp Special Needs Counselor
- Volunteer Opportunities available with Day Camp and Aquatics
- Aquatics Instructor/Lifeguard
- Deck Attendant/Cashier
- Parks Labourer (seasonal contract 8 months)
- Parks Labourer (part-time summer)
- Facility Labourer (part-time summer)

Whitchurch-Stouffville Museum

- Curatorial and Programming Assistant
- Exhibit and Programming Assistant

For further details on these opportunities, please refer to our website.

Interested persons are invited to submit their résumé/application appropriately marked as to position(s) applying for no later than Friday March 6, 2009 (Museum positions no later than Friday March 27, 2009) to:

Executive Assistant, Human Resources Services
37 Sandiford Drive, 4th Floor, Stouffville, Ontario, L4A 7X5
For more information please call the
Department of Leisure Services, 905-640-1910 ext. 292

Personal information is collected under the authority of the Municipal Act, R.S.O. 1990, C.M. 45, as amended and will be used to determine eligibility and suitability for employment with the Town of Whitchurch-Stouffville. We thank all candidates in advance but only those being considered for an interview will be contacted.

VOLUNTEER RECRUITMENT

The Town of Whitchurch-Stouffville has a vacancy on the Lemonville Community Centre Committee.

Applications will be received until February 27th

Applications forms and the mandates are available in person at the Town Office and Library during regular business hours or online at www.townofws.com/town_committees.asp.

NOTICE

TOWN REQUESTS RESIDENTS' CO-OPERATION

The Town requests that you consider same-side parking on residential streets.

Some residential streets are impassable due to the number of vehicles parked on both sides of the street. This creates a potentially dangerous situation if Emergency Services Vehicles are unable to get through due to vehicles being parked on both sides.

Please be aware of potential access problems when you or your visitors are parking on the street. We appreciate your co-operation.

NOTICES

TOWN OF WHITCHURCH-STOUFFVILLE ELECTION WARD BOUNDARY REVIEW

The Town is conducting a comprehensive review of the municipal ward boundaries.

Your views are important and will help shape the future of the ward boundaries in Whitchurch-Stouffville. Please take a few moments to visit our website and complete the online survey at www.townofws.com/ward_boundary_review.asp

NON-DESTRUCTIVE FIREFIGHTING TRAINING

Where: 5859 Main Street,
When: Saturday February 14, 2009
Time: 8:00 a.m. - 1:00 p.m.



Whitchurch-Stouffville Fire & Emergency Services would like to notify the public of this training exercise taking place this Saturday. If you have any questions please call 905-640-9595.

UPCOMING EVENTS

FAMILY DAY at the WHITCHURCH-STOUFFVILLE MUSEUM
Monday, February 16, 2009
10:00 a.m. - 4:00 p.m.

Drop in and create some heritage crafts to take home. Tour the buildings. Visit the gift shop. A great family experience!
Admission: \$2.00 per youth.

SHOWCASE OF STOUFFVILLE IN THE ARTS
February 19th, 2009

EastRidge Evangelical Missionary Church
6:30 p.m. - Visual Arts / 7:15 p.m. - Concert

Featuring Local Talent in Various Artistic Disciplines including: Vocalists, Dancers, Instrumental Soloists, Bands and Visual Artists to benefit the Lebovic Centre for Arts & Entertainment - *Nineteen on the Park*

Opening and Closing Act - Jack de Keyzer, Juno Award winning blues musician, songwriter and producer and his six-piece band
Tickets are \$15.00 and available at: We Rock School of Music/York Dance Academy/Latcham Gallery/Lebovic Leisure Centre or call Winnie Layland at 905-640-1910/905-895-5299 ext 227.

BICYCLE SAFETY

Are you concerned about bicycle safety and the number of riders NOT wearing helmets?

Leisure Services is proposing a HELMET PATROL PROGRAM. We want to raise the profile of wearing a helmet and create a safe cycling community in Stouffville!

Find out more information or how you can get involved at our first information meeting.

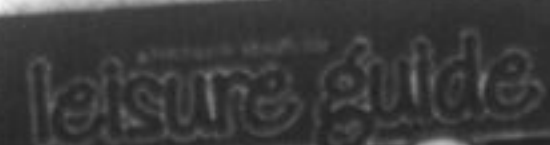
Tuesday February 24 - 7:00 p.m., Lebovic Leisure Centre

For further information contact Barb Armstrong 905-642-7529 ext. 328 or barb.armstrong@townofws.com.



Starting February 15, 2009, YRT/Viva is revising select bus schedules/routes within the Town - Route 9 (Ninth Line), Route 414 (Unionville/Brill Crothers School Special). On Monday February 16th, the YRT, Route 77 and TTC routes operating in York Region will be on Sunday/Holiday service.

For more information, visit their website at yrt.ca or call 1-866-MOVE-YRT or 905-762-2100.



LOOK FOR OUR SPRING/SUMMER LEISURE GUIDE INCLUDED IN TODAY'S PAPER!