

Region home to some of GTA's best employers

BY CHRIS TRABER
Staff Writer

A half dozen of the top 75 GTA employers are in York Region, a survey by Media Corp Canada Inc. revealed.

American Express Canada, Digital Rapids and Seneca College in Markham joined State Farm Insurance headquartered in Aurora and Newmarket-based Regional Municipality of York and Southlake Regional Health Centre on the list announced Saturday.

The prestigious award recognizes employers throughout the GTA that work to create a positive and rewarding work environment for their employees.

Southlake, with 1,435 employees, is a 305-bed full-service hospital in Newmarket.

The award is a reflection of how far the hospital has progressed as an organization and its commitment to make Southlake a great place to work, practise, volunteer and receive care, president Dan Carriere said.

Southlake's people and culture is what continuously sets the organization apart, human resources and paramedical services vice-presi-

dent Gary Ryan said.

"This award is a true tribute to our talented workforce and unsurpassed corporate values," he said. "We've worked hard to create an environment where our people feel comfortable and respected and this award proves that Southlake truly is a great place to work."

The municipality's employees can be proud, York Region chairperson and CEO Bill Fisch said.

"York Regional council works hard to ensure our taxpayers' needs are met by creating and fostering workplace programs that instil a sense of pride and commitment to service excellence among all of our staff," he said. "This accolade demonstrates our residents and businesses are receiving high quality programs and value-added services by highly professional and dedicated regional employees."

"York Region is a desirable place to work and build a career," York Region chief administrative officer Bruce Macgregor said.

"Our employees have told us that they are very satisfied with their workplace and the

employee programs we offer. This, in turn, has resulted in strong employee job performance and makes York Region an employer of choice."

This is the third year the competition has recognized the GTA's top 75 employers.

The competition is organized by the editors of Canada's top 100 employers.

Entrants completed an extensive application that outlined various aspects of the organization, including workforce, physical environment, work and social atmosphere, compensation, vacation and personal day policies, health, financial and family-friendly benefits.

In addition, internal communications, performance management, continuing education, and professional development were examined.

American Express Canada, issuer of the familiar American Express cards, is a leading provider of financial and travel-related services and has 3,786 employees.

The organization manages a development program that gives employees the chance to work on company projects at any of their offices worldwide.

The Regional Municipality of York

NOTICE OF COMPLETION

CLASS ENVIRONMENTAL STUDY REPORT ADDENDUM
NINTH LINE (Regional Road 69) IMPROVEMENTS
NORTH OF MAJOR MACKENZIE DRIVE TO NORTH OF MAIN STREET (STOUFFVILLE)
Towns of Markham and Whitchurch-Stouffville

The Regional Municipality of York has completed a Class Environmental Study Report Addendum for the improvements to Ninth Line (Regional Road 69) from north of Major Mackenzie Drive to north of Main Street (Stouffville) in the Towns of Markham and Whitchurch-Stouffville.

The study has been conducted as a **Schedule C Municipal Class Environmental Assessment** (October 2000, as amended in 2007) under the *Ontario Environmental Assessment Act*.



Subject to the comments received as a result of this Notice and the receipt of approvals; The Regional Municipality of York intends to proceed with the detailed design and construction of this project.

The purpose of this project is to implement improvements within the Ninth Line Corridor. The recommended design includes extending the four lanes on Ninth Line north of Major Mackenzie Drive, providing turn lanes at sideroad intersections, improving drainage, rehabilitating pavement and eliminating jogs at the intersections of Elgin Mills Road, 19th Avenue and Main Street (Stouffville).

A **Schedule C** Environmental Study Report Addendum has been prepared for this project. The Report describes the problem, the assessment of alternatives and the preferred solution, as well as the consultation conducted during the Study.

This Notice places the Environmental Study Report Addendum on public record, which is available for review at the following locations during normal business hours:

**The Regional Municipality of York
Clerk's Department**
17250 Yonge Street
Newmarket, ON
(905) 895-1231 ext 1300

**The Regional Municipality of York
Transportation Services Department**
90 Bales Drive East
East Gwillimbury, ON
(905) 830-4444

**Town of Markham
Clerks Department**
101 Town Centre Boulevard
Markham, ON
(905) 475-4744

**Town of Whitchurch-Stouffville
Clerk's Department**
37 Sandiford Drive, 4th Floor
Stouffville, ON
(905) 640-1900 ext. 224

Whitchurch-Stouffville Public Library
30 Burkholder St
Stouffville, ON
L4A 4K1
(905) 642-7323

Town of Markham Public Library
6031 Highway 7
Markham, ON
L3P 3A7
(905) 513-7977

The public review period will commence on November 4th, 2008. Interested persons may provide written comments to the Region representative listed below within the review period:

**Richard So, P.Eng.
Project Manager**
Regional Municipality of York
Transportation Services
17250 Yonge Street, Box 147
Newmarket, Ontario
L3Y 6Z1

Phone: (905) 764-6345 ext. 5263
fax: (905) 836-4590
e-mail: Richard.So@york.ca

If concerns cannot be resolved through discussions with The Regional Municipality of York, a person may request the Minister of the Environment issue a Part II Order to this project. **A Part II Order request must be received by the Minister at the address below no later than December 4, 2008.**

The Honourable John Gerretson, Minister of the Environment
12th Floor, 135 St. Clair Avenue West, Toronto, Ontario M4V 1P5

A copy of the Part II Order request shall be sent to:

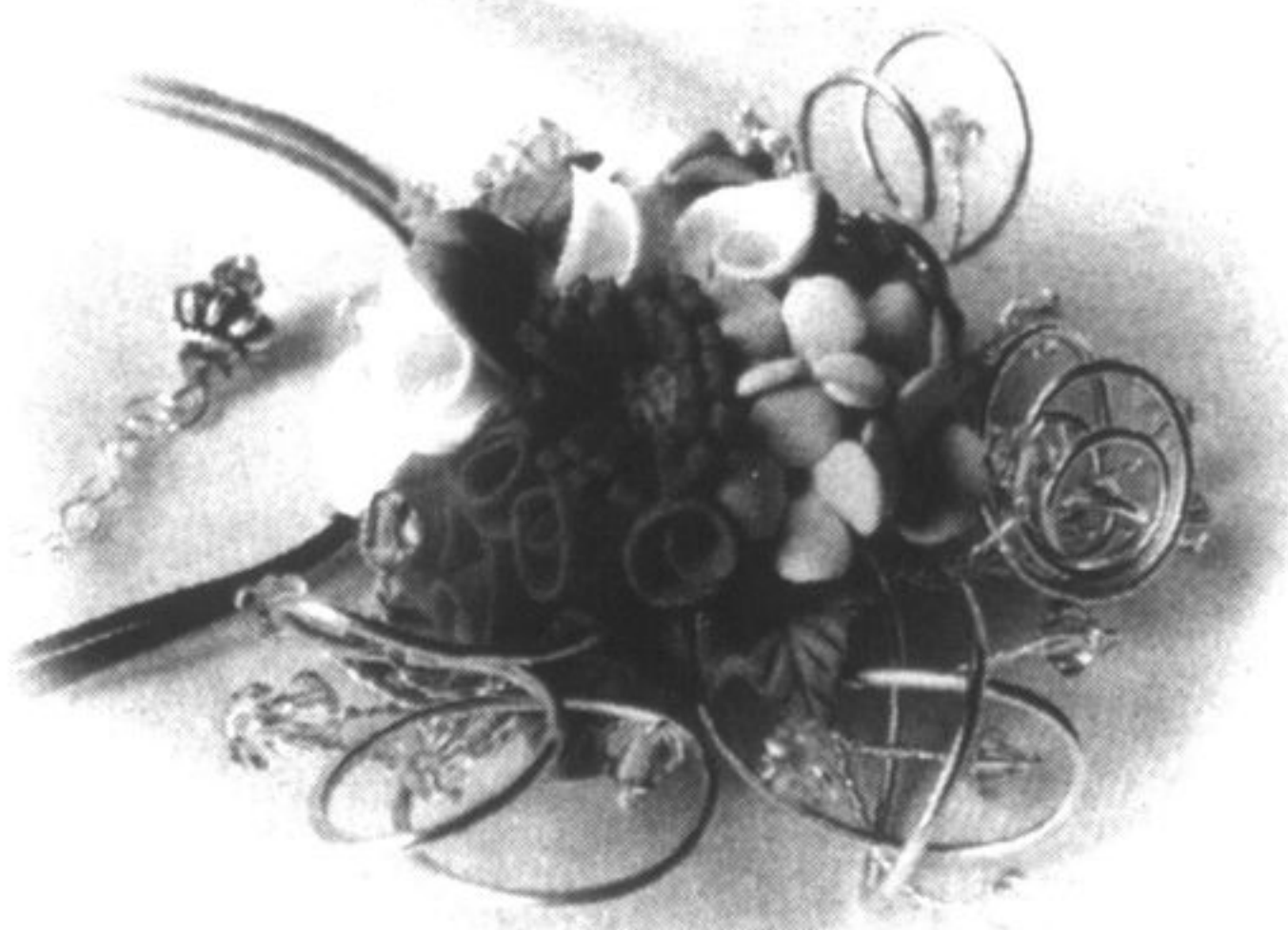
**The Regional Municipality of York
Clerk's Department**
17250 Yonge Street
Newmarket, ON L3Y 6Z1

Bill Fisch York Region Chairman and CEO
Kathleen Llewellyn-Thomas Commissioner of Transportation Services

Thank you for your participation in this study

This notice issued on November 4, 2008.

the heart of country craft show



The best selection of handmade country treasures and folk art, jewelry, florals, holiday season home décor and gourmet delights brought to you by some of Canada's finest crafters, artisans and gift suppliers.

distinct designs from premier crafters & artisans



simply unique

Oct 25 from 10am - 5pm & Oct 26 from 10am - 4pm

Richmond Green Sports Centre

1300 Elgin Mills Road East • Richmond Hill

2008

For more information please contact **905-881-3373**
www.heartofthecountry.ca

York Region