

# your PLANNER

MONDAY  
OCT.  
**20**

**FOR THE BIRDS**  
Kirt Christ from The Backyard Naturalist talks about birds in the garden at the Stouffville Horticulture Society meeting at Stouffville United Church tonight. Results of the photo contest will be featured.

FRIDAY  
OCT.  
**24**

**OPEN MIC NIGHT**  
Hype Muzik is hosting a Halloween-themed open mic at For the Love of Jo Coffee House on Main Street from 7 to 9 p.m. For more information call 647-988-9728 or 905-591-HYPE.

WEDNESDAY  
OCT.  
**22**

**LEGION LUNCH**  
Stouffville's Royal Canadian Legion's hosts its roast beef and roast pork Fall Luncheon from 11.30 a.m. to 1 p.m. at its hall on Ninth Line just north of Main Street. Tickets are \$12 from the branch, members, the door or 905-640-1714.

SATURDAY  
OCT.  
**25**

**SWEET SOUNDS OF FALL**  
Christ Church Anglican, 254 Sunset Blvd., hosts its Harvest Harmony concert at 3 and 7:30 p.m. Featured are Ontario Heartland Sweet Adelines, Barons of Barbershop and Spartan Sound from Stouffville District Secondary School. Tickets are \$15 at the door.

For more community events, visit [yorkregion.com](http://yorkregion.com) and click on POP personal online planner.

To add an event to this listing, e-mail Jim Mason at [jmason@yrmg.com](mailto:jmason@yrmg.com). Event organizers can also register with POP at [yorkregion.com](http://yorkregion.com) to have events listed free online.

THURSDAY  
OCT.  
**16**

**EUCHRE, ANYONE?**  
The Lemorville Euchre Club begins its fall season tonight at 7:30 p.m. at the Lemorville Community Centre, McCowan Road south of Bloomington Road. For more information, call 905-640-4429.

SUNDAY  
OCT.  
**19**

**...AND A MOVIE**  
The Whitchurch-Stouffville Public Library's Sunday afternoon movie and discussion features Heather Rigby showing a 23-minute film on Tibet at 1 p.m. Call 905-642-READ.

FRIDAY  
OCT.  
**24**

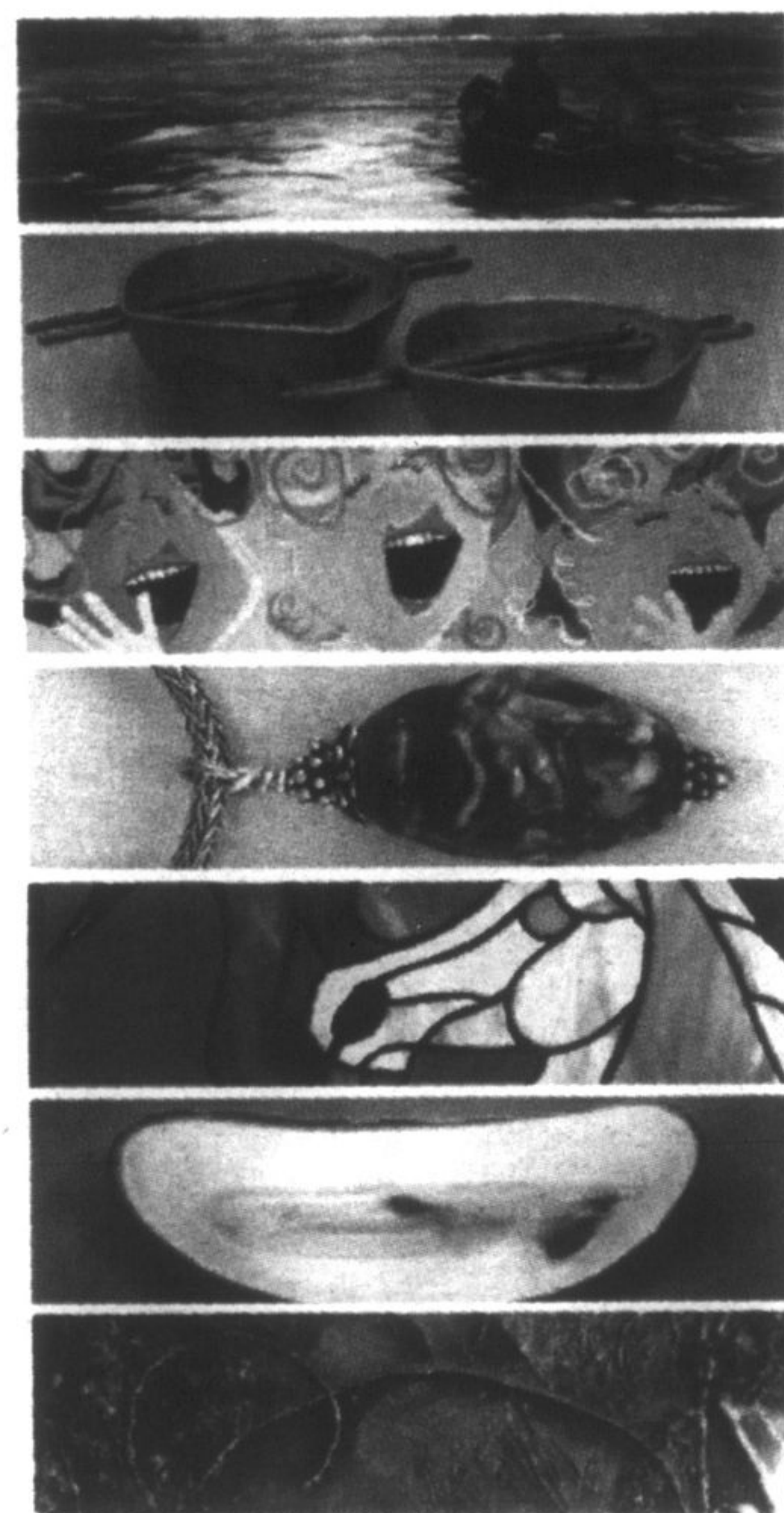
**PA DAY, EH?**  
The Town of Whitchurch-Stouffville holds PA day events, including a movie, skating, swimming and art program at the Stouffville Arena, public library and Lebovic Leisure Centre. Call 905-642-PLAY and 905-642-READ.

## 8th ANNUAL WHITCHURCH STOUFFVILLE Studio TOUR & SALE

Saturday, Oct. 18  
Sunday, Oct. 19

10:00 am - 5:00 pm

FREE ADMISSION  
FREE DRAW



**30 / 20**  
Artists / Venues

Oils • Acrylics • Watercolours • Pastels  
Pottery • Raku • Stained Glass • Jewellery  
Woodblock • Graphite • Wood Turning

Follow the signs,  
grab a brochure,  
JOIN THE TOUR!

For more information call (905) 642-1721 or  
E-mail [info@stouffvillestudiotour.com](mailto:info@stouffvillestudiotour.com)

Visit us at

[stouffvillestudiotour.com](http://stouffvillestudiotour.com)

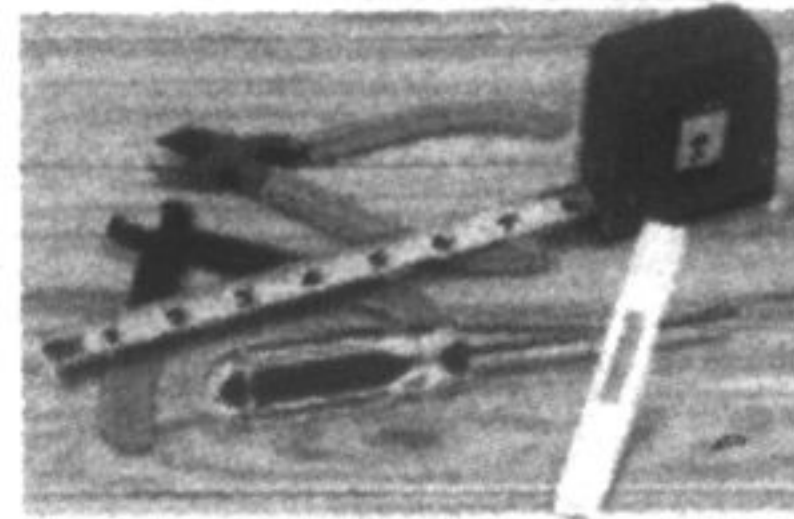
## SCHELL Building Centres

OVER 85 YEARS IN YOUR TOWN!

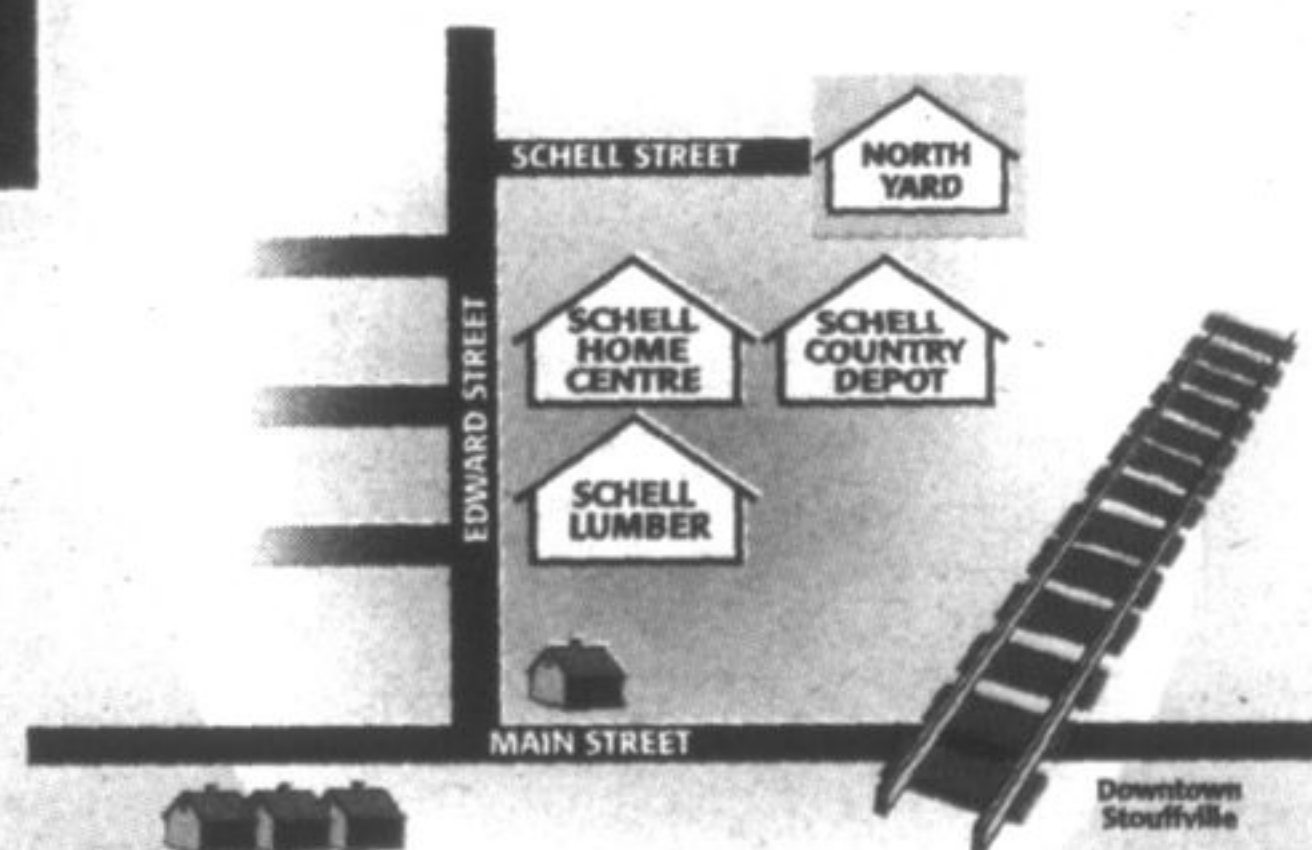
Since 1922



All your lumber  
&  
building supplies!



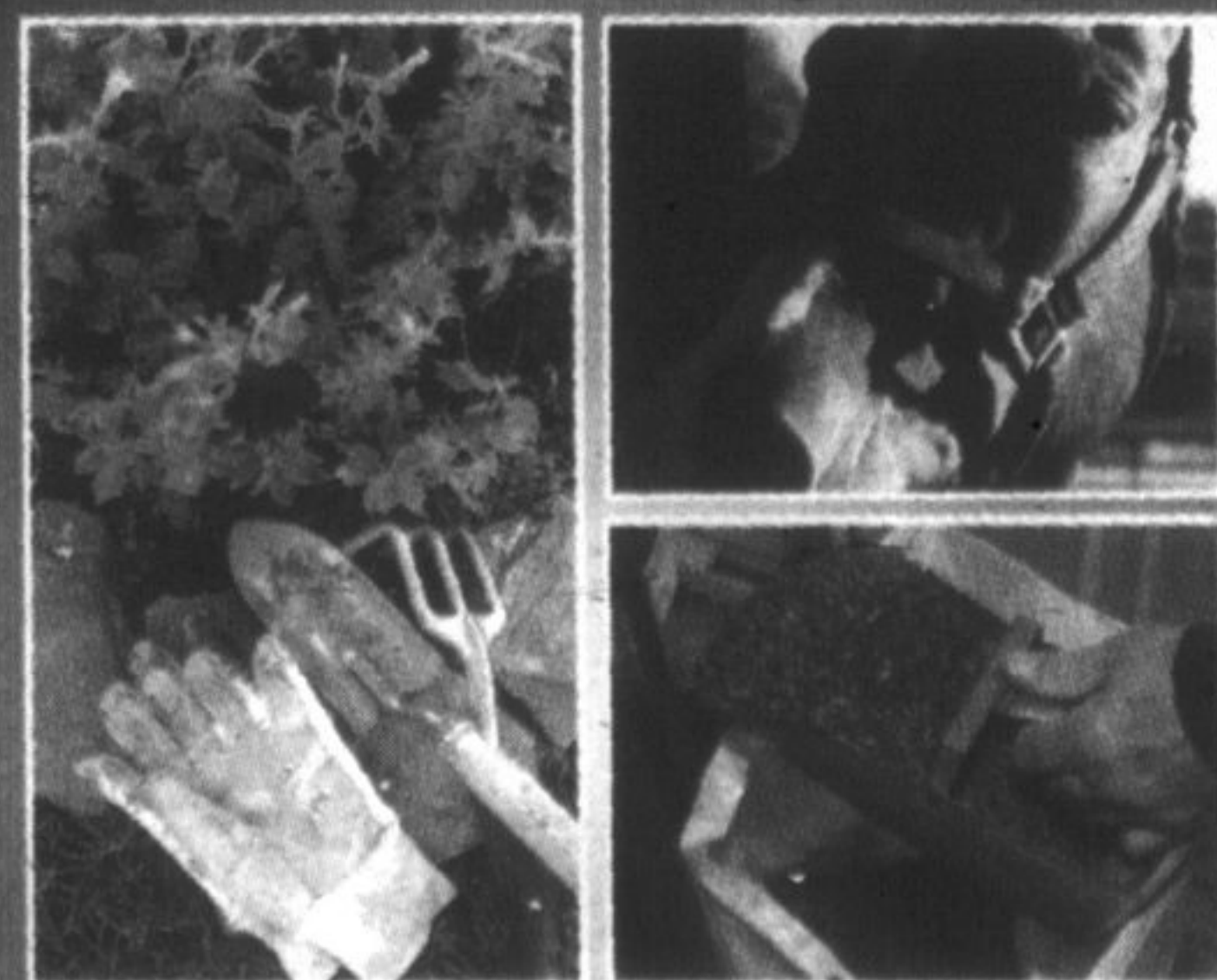
33 Edward St,  
Stouffville  
905-640-3440



20971 Dalton Rd.  
Sutton  
905-722-6561

FREE DELIVERY FROM STOUFFVILLE LOCATION

### SCHELL Country Depot



Lawn & Garden  
Farm Supplies • Tack Pet  
Supplies • Work Wear • Feed

47 Edward St., Stouffville  
905-640-1550

### SCHELL Design Centre



Specializing in Home Design  
Needs • Windows • Doors  
• Roofing & More!

47 Edward St., Stouffville  
905-640-3440

THE ARTHRITIS SOCIETY

### TOMORROW'S GIFT

Whether it's a bequest, a gift of life insurance or a charitable annuity, you can plan to ensure continuing support for arthritis research. Nearly four million Canadians who have arthritis are counting on you.

For more information about our planned giving program, contact The Arthritis Society.

GIVE... to give HOPE

Richmond Hill

580-5177

This message brought to you as a community service of The Economist & Sun/Sun-Tribune