

Business Owners

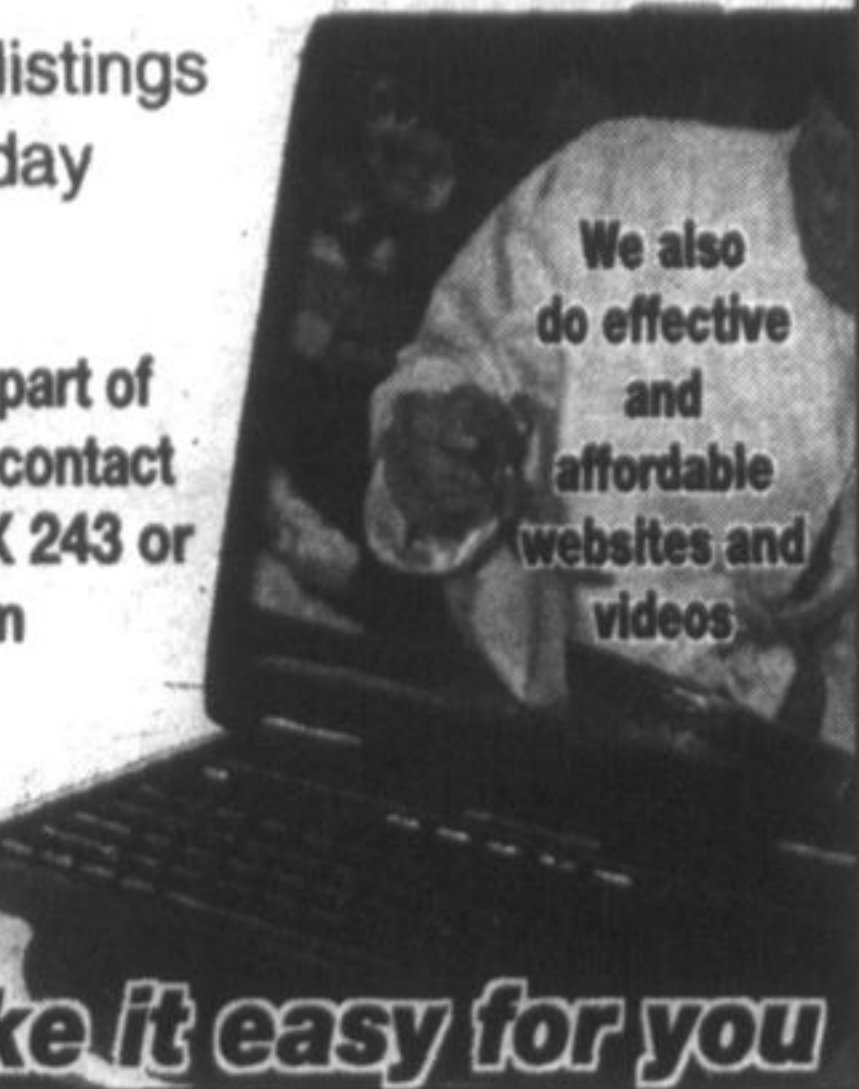
Find out why our users feel that yorkregion.com is the #1 Community website in York Region.

- York Region's best business directory
- Handy events calendar
- POP • Jobs • Real estate listings
- Breaking news 3 times a day and much more!

Make yorkregion.com an essential part of your marketing mix. For information contact Dawna Andrews 1-877-362-8970 X 243 or email dandrews@yrmg.com

yorkregion.com
YOUR COMMUNITY

...we make it easy for you



Dishwashers more of a headache

They sit so benignly under the counter, spraying water and soap everywhere to restore your pots, plates and porcelain to something resembling pristine condition.

But dishwashers are much more than that, I've discovered.

Indeed, I believe they are part of a long list of cultural touchstones — such as monster truck rallies and gigantic TVs (male), Sex and the City and changing your hair

because it's boring (female) — that mark the dividing line between the genders.

I didn't know this until I got married. Who, after all, ponders dishwashers unless they're leaking on the kitchen floor?

But since walking down the aisle to a new life with my lovely wife and charming and talented stepchildren, I see dishwashers in a whole new light.

Here's the thing, from what I figure is the perspective of most males: I have a

machine designed to clean and dry pots, pans, plates, glasses, plastic cutting boards and cutlery.

Because I have this machine, I no longer have to fill up the sink with soapy water and do the job manually.

Sounds simple, right? Wrong.

First off, I've been taught I must rinse, rinse, rinse all sorts of stuff before it goes in.

Otherwise, it won't get clean.

Really?

Then why use this machine, which apparently does its job as well as Maxime Bernier handled the foreign affairs ministry?

OK, I can deal with rinsing. I can change, if I have to, I guess (thanks for the pep talk, Red Green).

But then there's the matter of how much to put in.

Eyes are averted, then protests begin as I jockey items around and squeeze in one more ice cream bowl.

It's overloaded, I'm told. It won't get clean.

My response is gloriously guy-like: then leave it in there for another go-round.

Makes perfect sense, right fellas?

It's not like most households are short of bowls, right?

Well, you'd think I'd just suggested we invite the members of Judas Priest over for an evening of Beethoven and howling guitar solos.

A second go-round won't clean it, I'm told.

It'll just get baked on.

Well, I say, leave it in six or seven times if need be.

Why? Because I have a



Frank King

► Frank King is an assistant editor with the York Region Media Group. You can e-mail notes of sympathy to fkking@yrmg.com

dishwasher and that means I don't have to manually wash and dry anymore.

And if it's still baked on after that, toss it out.

Am I dogged on this, like a brain-dead pit bull and his bone?

You bet I am.

Either we do it the old fashioned way, in the sink, or we use a dishwasher. There ain't no middle ground for this guy.

Or at least I thought there wasn't.

Married life has a wonderful/disturbing ability to wear away at the edges and mold a knuckle-dragging man into something respectable.

And by respectable, I mean acceptable to women.

So I'm thinking about keeping the peace and swallowing another round of Possum Lodge philosophy.

But if you ever saw the classic Red Green program, you'll notice the guys never said that mantra with enthusiasm, did they?

VILLAGE NISSAN

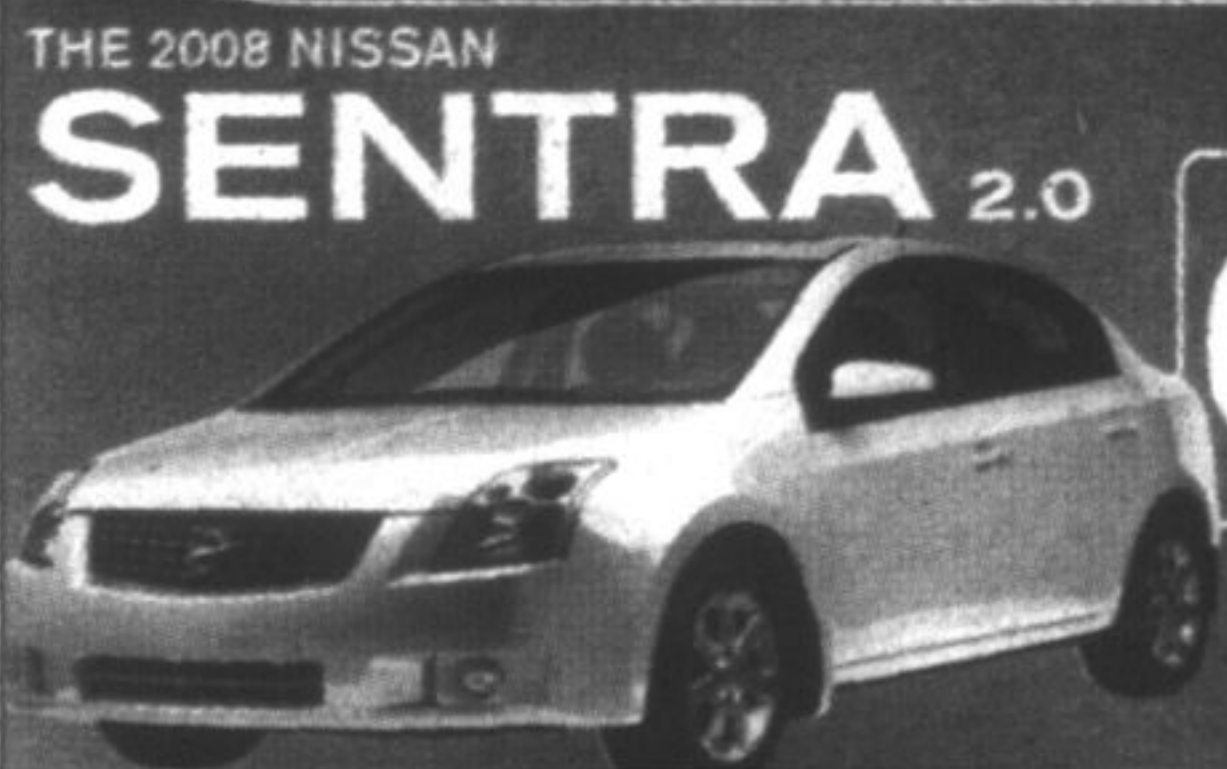
100 DAYS OF GRACE.

ON EVERY TRUCK, CAR, AND SUV.

DON'T PAY FOR 100 DAYS **0% PURCHASE FINANCING**

FOR UP TO 60 MONTHS.

HURRY! OFFERS END JUNE 30TH!



THE 2008 NISSAN SENTRA 2.0

0% PURCHASE FINANCING FOR UP TO 60 MONTHS.	LEASE FOR \$198** PER MTH FOR 60 MTHS EXCLUDES \$1,225 FREIGHT AND PDE	LEASE RATE 1.9% \$0 SECURITY DEPOSIT	\$0 DOWN PAYMENT	CITY: 8.3L/100KM (34MPG) HIGHWAY: 6.4L/100KM (44MPG)
---	--	--	-------------------------	---

THE 2008 NISSAN PATHFINDER LE

\$5000 FREE GAS!*

*ONLY APPLICABLE TO THIS 2008 NISSAN PATHFINDER LE (4WD) WITH 2.5L



THE 2008 NISSAN ALTIMA 2.5 S CVT



THE 2008 NISSAN VERSA 1.8 S HATCHBACK



THE ALL NEW 2008 NISSAN ROGUE 2.5 S FWD

NO CHARGE \$2000 CANADIAN EXTRA PACKAGE INCLUDES 16" ALLOY WHEELS, 8-WAY POWER DRIVER'S SEAT, STEERING WHEEL, AUDIO CONTROLS, HEATED FRONT SEATS, PLUS 4 ADDITIONAL FEATURES	
LEASE FOR \$268** PER MTH FOR 48 MTHS EXCLUDES \$1,300 FREIGHT AND PDE	LEASE RATE 2.5% \$0 SECURITY DEPOSIT \$2,937 DOWN PAYMENT
CITY: 9.4L/100KM (31MPG), HIGHWAY: 6.3L/100KM (45MPG)	

LEASE FOR \$179** PER MTH FOR 60 MTHS EXCLUDES \$1,175 FREIGHT AND PDE	LEASE RATE 1.5% \$0 SECURITY DEPOSIT
\$0 DOWN PAYMENT	\$600 GRAD PROGRAM REBATE
CITY: 7.9L/100KM (35MPG), HIGHWAY: 6.3L/100KM (45MPG)	

LEASE FOR \$268** PER MTH FOR 48 MTHS EXCLUDES \$1,400 FREIGHT AND PDE	LEASE RATE 3.9% \$0 SECURITY DEPOSIT \$2,999 DOWN PAYMENT
\$1000 eCOAUTO REBATE	
CITY: 9.1L/100KM (31MPG), HIGHWAY: 7.2L/100KM (35MPG)	

VILLAGE NISSAN

4600 Hwy. 7, Markham (905) 477-3337

www.villagenissan.com



A not-for-profit organization that provides a peer support program for children, youth and adults that have had a separation, divorce or death within their family. In York Region our program is offered free of charge in over 60 school and community sites. To locate a site near you or for further information contact:

1-877-403-2733

www.rainbows.ca

This message brought to you as a community service of The Economist/Sun-Tribune.