

# GARDENING

## Landscaping a Street Corner: a real challenge!

It's not always easy to landscape your property when it's situated on a street corner. Not only do you have to respect municipal regulations and think about the neighbours, but you also have to take into account the presence of pedestrians and cars as well as the snow and calcium that will be thrown up on your property. All that, as well as ensuring that your garden is aesthetically pleasing from both sides of the corner.

Two options are open to you. You could decide to leave the front as well as the backyard open or opt for some privacy. A basic requirement is to always have a well maintained lawn. A genuinely beautiful garden, open for the world to see, can only be achieved by meticulously planning your landscape design. By drawing up a plan to scale or resorting to the services of a landscaping specialist, you can determine where to place the trees, shrubs, flowerbeds and rockeries. A good balance must be maintained between the two sections of the garden as well as creating an overall harmony.

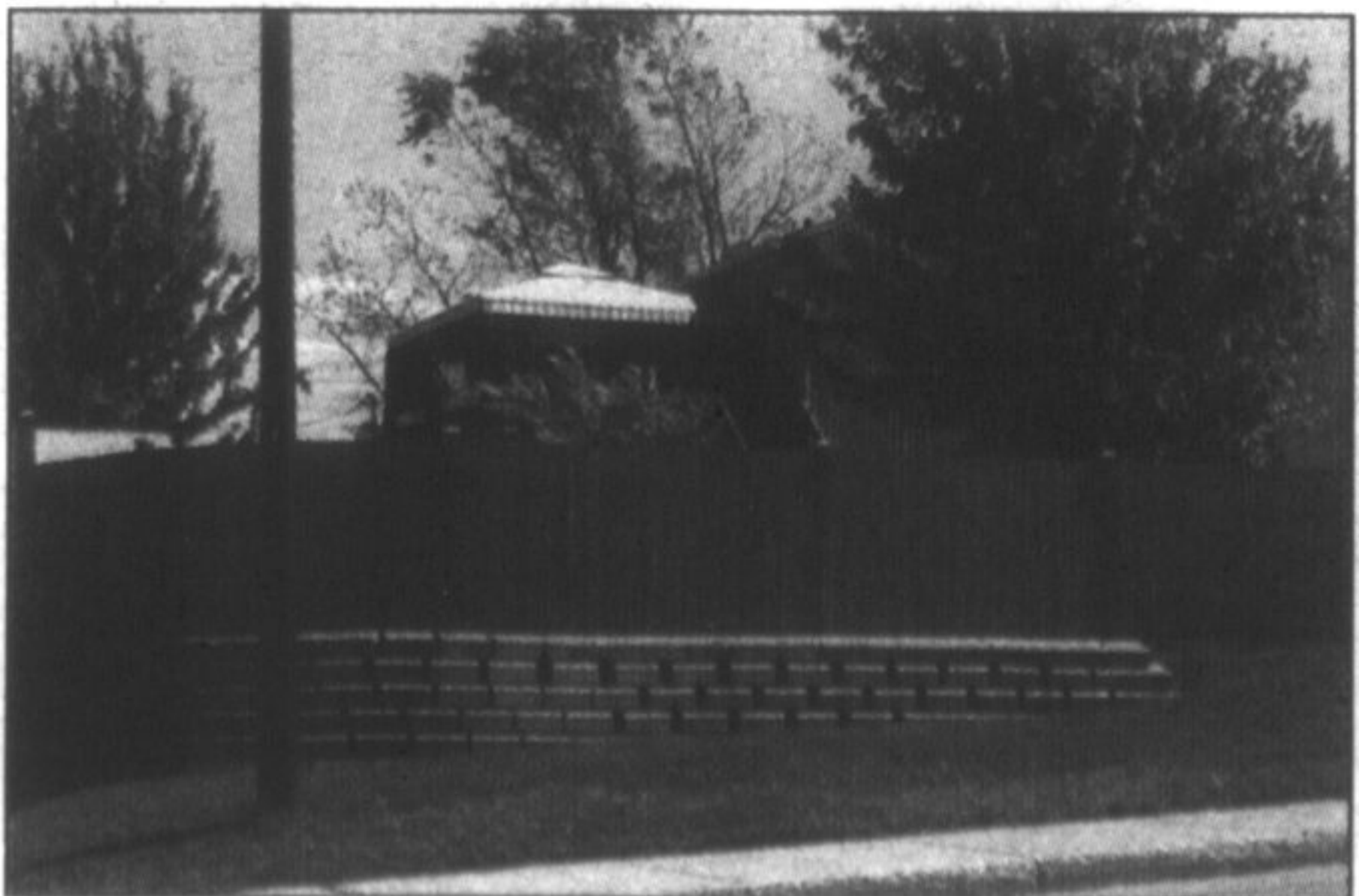
If you prefer to have more privacy, you will have to enclose the property its entire length, in both directions. This implies choosing an aesthetically pleasing enclosure. The two main categories available to you are fencing or hedging. A privacy fence protects from curious looks,

allows a certain intimacy and ensures greater security. A cedar, or other evergreen hedge ensures privacy year round as well as adding a more natural and agreeable note to the envi-

ronment. Closing the frontage also allows for the worry-free installation of a pool or a gazebo. It's always possible to plan a small arrangement outside the enclosure to embellish the view.



A privacy fence allows the installation of a pool or a gazebo protected from curious looks. A low wall completes the arrangement of this street corner.



A hedge and a tree create a beautiful, natural corner.

## BALLANTRAE STONE



- Flagstone • Ledgerock • Interlocking Stone • Patio Stone
- Cultured Stone • Reclaimed Brick • Stone Steps
- Retaining Walls • Sand & Gravel • Garden Soils & Mulches



**Triple Mix**  
**Bulk Bag**  
over 1 yard  
**\$115<sup>00</sup>**  
Delivered



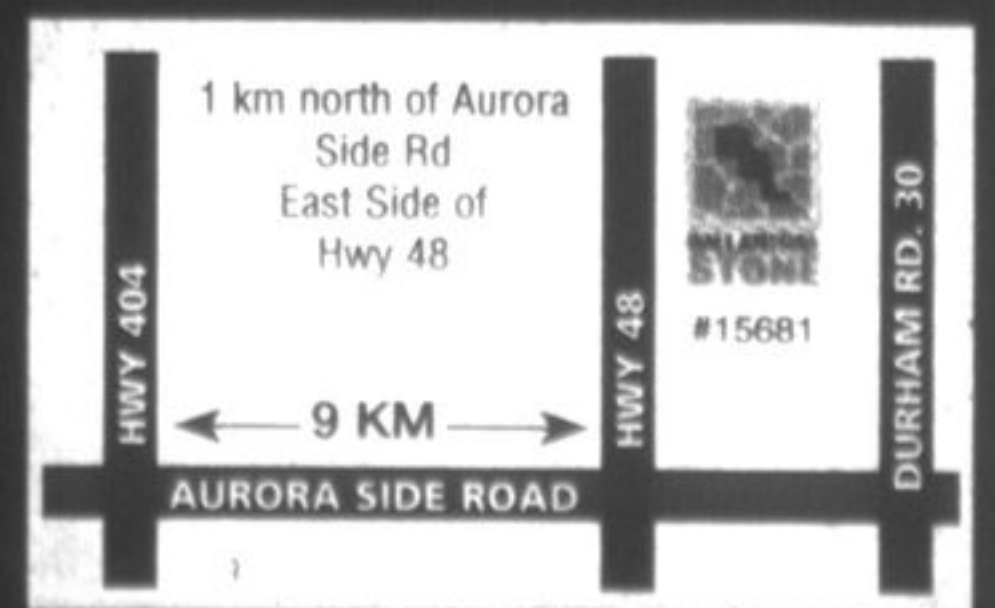
CULTURED STONE  
DESIGN SOLUTIONS® FOR HEARTH AND HOME



**BALLANTRAE**  
STONE & BUILDING SUPPLIES

1-866-888-9442

**905-642-5113**



MON-FRI: 7-5 • SAT: 8-2