

# COMING UP

The week ahead in  
Whitchurch-Stouffville

EDITOR'S PICK



STAFF PHOTO/STEVE SOMERVILLE

A.J. de Boer auditions for the Stouffville Has Talent finals being held Friday night at Latcham Hall during Youth Week.

## Young talent to shine

BY HANNELORE VOLPE  
Staff Writer

Young performers, who have sung and danced their hearts out at auditions earlier in the week, find out if they are winners in tomorrow night's Stouffville Has Talent competition.

The competition is the highlight of Youth Week in Stouffville, for young people 13 and older.

The activities, which include a scavenger hunt Saturday, were organized and presented by members of the Mayor's Youth Council. Erik Fraunberger is council chairperson, with Carlo Cilia as co-chairperson.

The competition takes place in Latcham Hall, on Park Drive south of Main

Street, from 7:30 to 11 p.m. The show will open with a performance by the Stouffville Steppers, who have taken their skipping talents to locations in York Region and beyond.

The mayor's youth council meets every second Thursday in the Stouffville Arena from 4:30 to 5:30 p.m. The next meeting is May 22. All young people are welcome to attend.

Saturday's scavenger hunt runs from 1 to 3 p.m., starting off from Latcham Hall. Forms for the hunt are available by visiting townofws.com

Donations to the Whitchurch-Stouffville Food Bank are welcome.

For more information on youth week, call 905-640-1910, ext. 288.

## your PLANNER

FRIDAY  
MAY

9

### STOUFFVILLE'S STARS ON ICE

The Stouffville Skating Club's biennial show is on tonight at 7 p.m. and tomorrow at 2 and 7 p.m. at the Stouffville Arena. Tickets are \$10 for adults and \$5 for seniors and children under 12.

SATURDAY  
MAY

10

### GARDENERS' DELIGHT

St. James Presbyterian Church, 6432 Main St., presents Through the Garden Gate from 9 to 11:30 a.m. Browse for garden magazines, tips, plants, books and gifts. Bake table and refreshments at the Good Earth Cafe.

SATURDAY  
MAY

10

### GOOD FOOD, GOOD CAUSE

M & M Meat Shoppes, at 5758 Main St., joins stores across Canada in a fundraising barbecue from 10 a.m. to 4 p.m. for Crohn's and Colitis research. Hamburger or hot dog, drink and chips for minimum donation of \$2.50.

SATURDAY  
MAY

10

### FAITHFUL SPEAKERS

Ahmadiyya Muslim Youth Association presents an interfaith seminar at Christ Church Anglican, 254 Sunset Blvd., from 4 to 6 p.m. Hear Hindu, Christian and Islamic speakers. Discussion, refreshments follow. Call 416-562-0596.

SATURDAY  
MAY

10

### PARTY WITH PURPOSE

Latcham Gallery hosts its 6th annual Arty Party fundraiser from 7 p.m. at the Cedar Beach Pavilion on Musselman's Lake. Silent auction, live music, art and cash bar. Get tickets from 905-640-8954.

THURSDAY  
MAY

15

### SAYING GRACE

The fifth annual Whitchurch-Stouffville Prayer Breakfast takes place at 7 a.m. at Station Creek Golf Club, in Gormley. Tickets are \$20 from Candlelight and Memories or 905-642-3632.

FRIDAY  
MAY

16

### A CHILD'S VIEW OF HISTORY

The Whitchurch-Stouffville Museum's summer exhibition, Fast Forward: Through a Child's Eyes, opens today and runs until Sept. 12. The museum is on Woodbine Avenue in Vandonf.

For more community events, visit [yorkregion.com](http://yorkregion.com) and click on POP, personal online planner.

To add an event to this listing, e-mail jim Mason at [jmason@yrmg.com](mailto:jmason@yrmg.com). Event organizers can also register with POP at [yorkregion.com](http://yorkregion.com) to have events listed free online.

## MARKHAM MITSUBISHI #1 VOLUME DEALER FOR 2007\*\*\*



Go far

# MARKHAM MITSUBISHI

BEST WARRANTY IN THE BUSINESS

BEST BACKED CARS IN THE WORLD	10	Year/160,000 km Powertrain Ltd Warranty*
	5	Year/100,000 km New Vehicle Ltd Warranty*
	5	Year/Unlimited km Roadside Assistance*

## Chance to win a \$5,000 Best Buy Gift Card



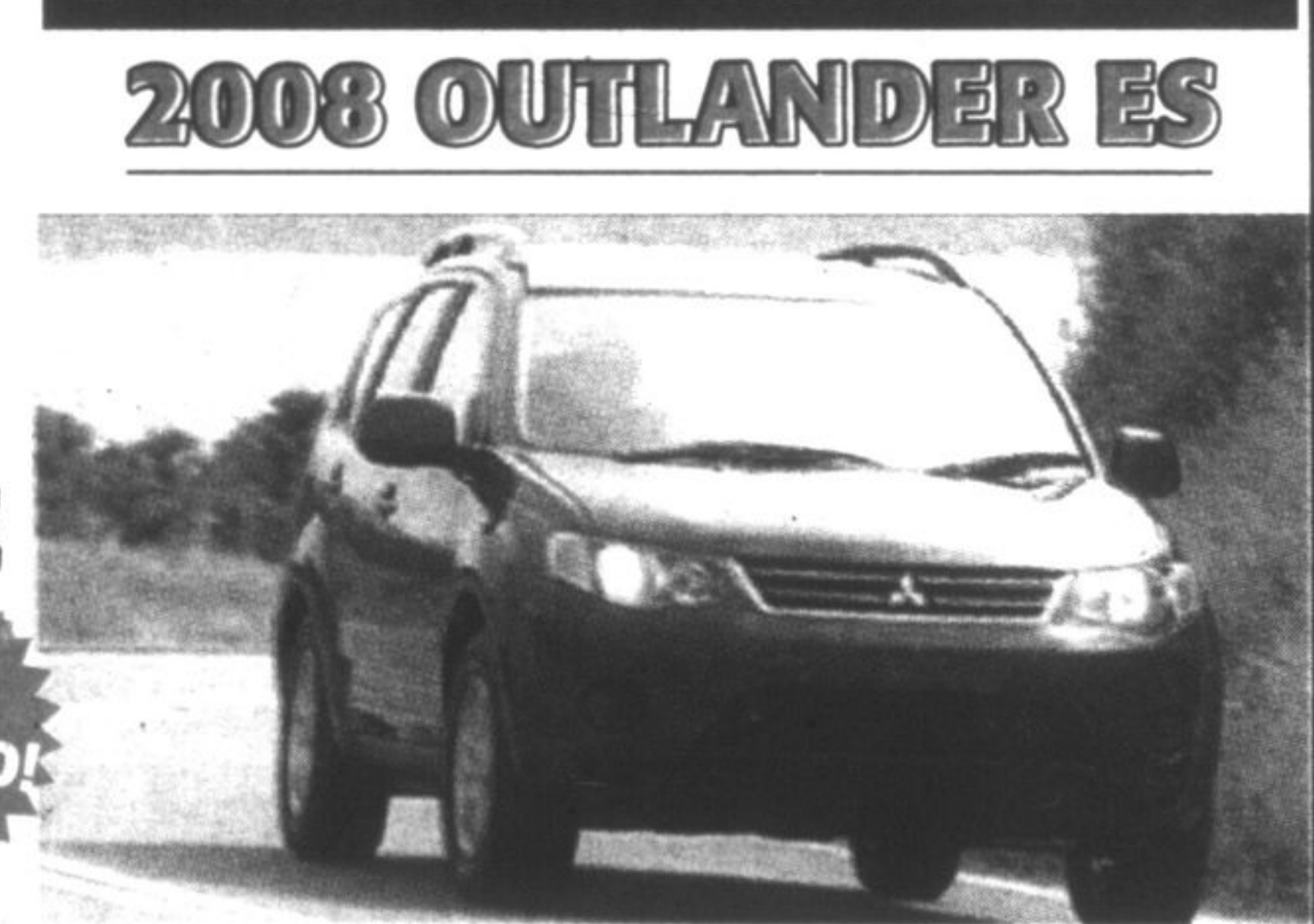
## THE NEW 2009 LANCER SE



**0%**

ON MOST NEW 2008 MODELS\*

**2008 OUTLANDER ES**



Plus  
\$1000  
ACCESSORIES  
CASH\*



SE MODEL STARTING AT **\$19,998\*\*** OR LEASE FOR **\$288** STARTING AT **\$24,998\*\*** AND **0%**

**DOWN** FINANCING UP TO 36 MTHS

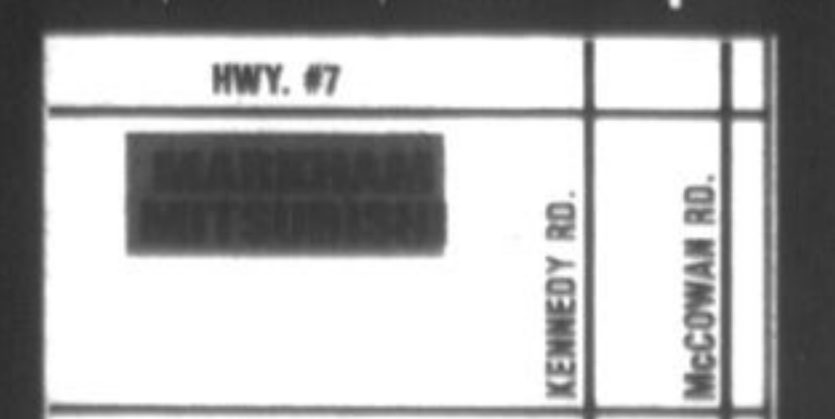
## \$\$\$ TRADES WANTED! \$\$\$ WE WILL PAY TOP VALUE! \$\$\$

0% finance rate up to 36 months term on selected 2008 Outlander. \*\*Sale price and lease payment are based on freight, PDI, admin, reg fee, locks and all applicable taxes upfront. License, gas and PPSA extra. Leases are based on a 36 month term and 20,000km per year (Lancer 2.8%) O.A.C. \*\$1100 swiss army gift pack available only on Eclipse and Spyder. Purchase or lease a new or used Mitsubishi delivered between April to June for a chance to win a \$5,000 Best Buy Gift Card. See dealer for more details. \*\*\* #1 Volume Dealer for 2007 (Ontario)

# MARKHAM MITSUBISHI

(866) 833-5365 [www.markham-mitsubishi.ca](http://www.markham-mitsubishi.ca)  
4611 Hwy. #7, Markham (West of Kennedy) in Unionville

SALES HOURS  
Monday-Thursday 9am - 9pm  
Friday-Saturday 9am - 6pm



**642-5111** **852-6711**

**Durham Steam Cleaning**

LOOSE RUGS  
BROADLOOM  
UPHOLSTERY  
3M Scotchguard

Caring for someone  
**over age 55?**  
We can help.

**CHATS**  
CHATS - Community Home Assistance to Seniors

905.713.6596 or 1.877.452.4287  
[www.chats.on.ca](http://www.chats.on.ca)