

# 0% OR UP TO \$10,000

**FINANCING FOR 72 MTHS** **IN SAVINGS**

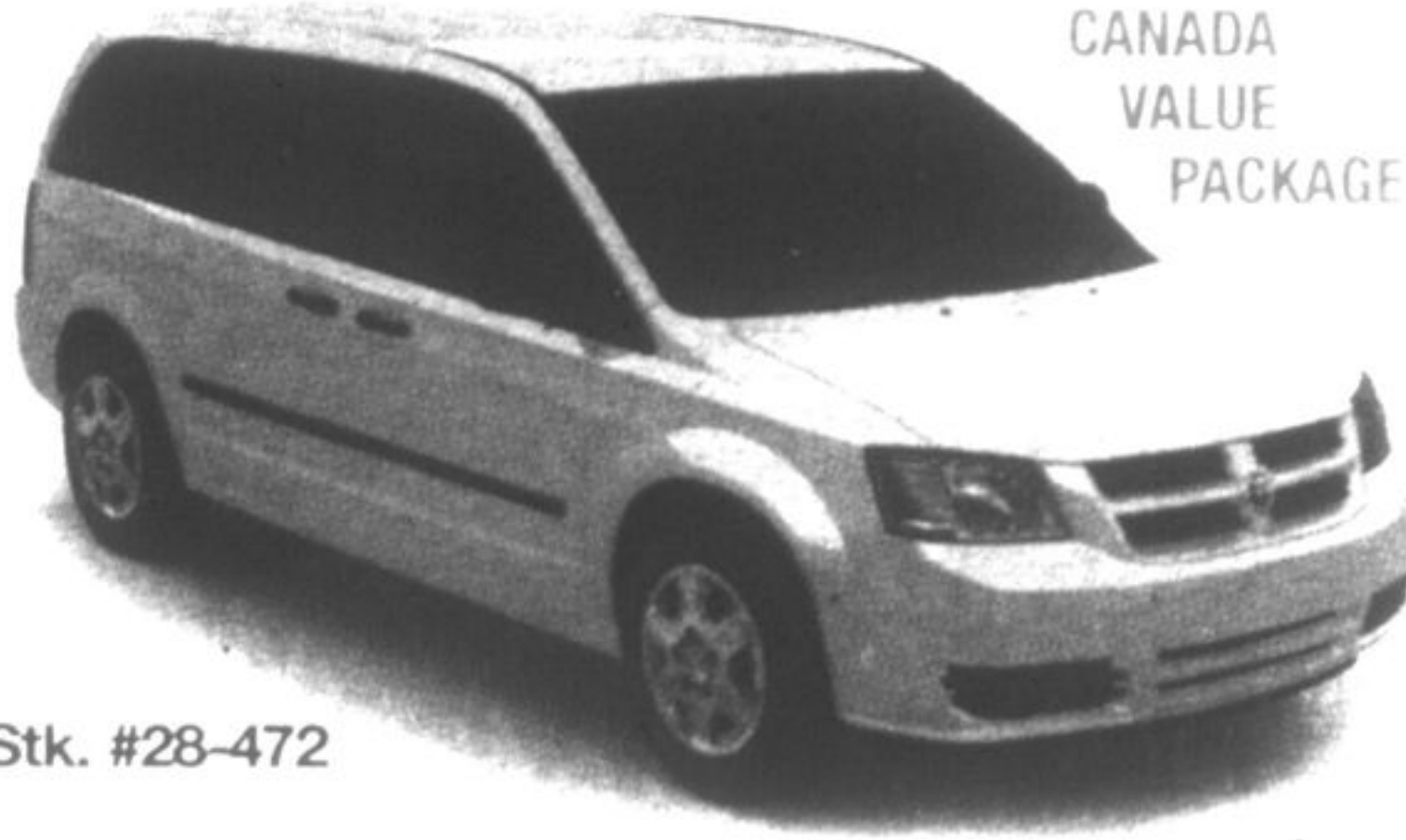
**BRAND NEW 2008 DODGE RAM  
1500 ST 4X4 QUAD CAB**



Stk. #28-388

HEMI V8, 5 SPEED AUTO, TRAILER TOW, ANTI-SPIN, PW, PL, CRUISE, TILT, KEYLESS ENTRY, CLOTH 40/20/40 SPLIT BENCH, A/C, AND SO MUCH MORE!

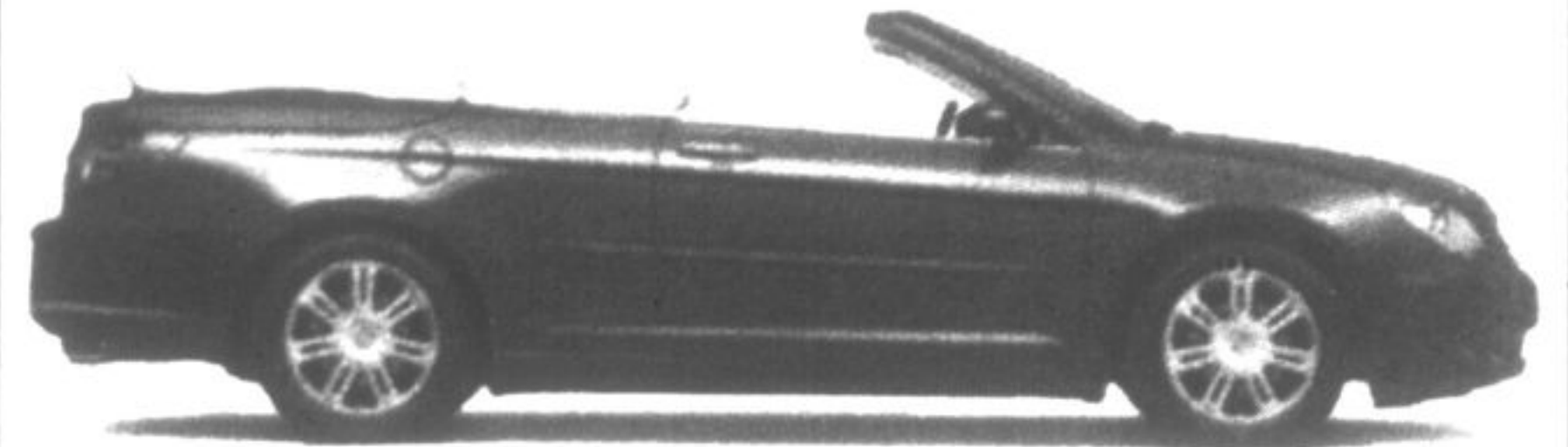
**BRAND NEW 2008 DODGE  
GRAND CARAVAN**



Stk. #28-472

3.3L V6, AUTO, 7 PASSENGER, ESP, ABS, STOW 'N' GO, PW, PL, PM, SIDE AIR BAG, DEEP TINT GLASS

**BRAND NEW 2008 CHRYSLER  
SEBRING CONVERTIBLE LTD.**



Stk. #28-453

6-SPD AUTOMATIC, 3.5L H.O. V6, HARD-TOP, PREMIUM LEATHER, MYGIG™ MULTIMEDIA WITH NAVIGATION, 18" CHROME WHEELS AND SO MUCH MORE!

**BRAND NEW  
2008 CHRYSLER 300 LIMITED**



Stk. #28-462

3.5L V6 H.O., 4-SPD AUTO, LEATHER, A/C, SUNROOF, KEYLESS ENTRY, PW, PL, CHROME WHEELS AND SO MUCH MORE!

**BRAND NEW  
2008 DODGE CALIBER SXT**



Stk. #28-536

CVT AUTOMATIC, PWR SUNROOF, 17" ALUM WHEELS, CRUISE, FOG LAMPS, LEATHER WRAPPED STEERING WHEEL, KEYLESS ENTRY, PW, PL, AM/FM/CD PLAYER

**BRAND NEW  
2008 DODGE VIPER**



Stk. 28-556

6-SPD MANUAL, 8.4L V10 600HP, SUEDE WITH LEATHER, NAVIGATION, TWO-TONED INTERIOR  
**IN-STOCK NOW! IMMEDIATE DELIVERY!**

0% APR financing for up to 72 mths on selected vehicles. OAC with Chrysler Financial. Ex \$10000 borrowing financed for 60mths - \$166.66/mth with \$0 cost of borrowing. See dealer for details.

## PRE-OWNED SPECIALS

<p><b>'05 FORD F150 XLT</b> SUPER CLEAN 4 DOOR WITH TONNEAU COVER, P/WINDOWS, P/LOCKS, KEYLESS ENTRY, CHROME WHEELS, SIDE STEPS, BED LINER, TRITON V8 AND SO MUCH MORE!</p> <p><b>ONLY \$19,998</b></p> <p><b>SALE</b></p>	<p><b>'04 DODGE RAM 2500</b> DIESEL 4X4 QUAD CAB, LEATHER, SPORT APPEARANCE, ELEC SHIFT ON THE FLY, TRAILOR TOW, HEATED SEATS, ANTI SPIN DIFF, POWER PEDALS, STEERING AUDIO CONTROLS, A/C WITH DUAL ZONE TEMPERATURE, 7 INFINITY SPEAKERS, FIFTH WHEEL READY AND SO MUCH MORE!</p> <p><b>ONLY \$19,998</b></p> <p><b>SALE</b></p> <p><b>MANAGER'S SPECIAL</b></p>	<p><b>'05 DODGE GRAND CARAVAN SXT</b> BALANCE OF FACTORY WARRANTY, LEATHER, DUAL POWER SLIDING DOORS, HEATED SEATS, POWER 8 WAY DRIVER SEAT, POWER LIFTGATE, TRIP COMPUT-ER, STOW 'N' GO, POWER SUNROOF, SECURITY ALARM, PARKSENSE REAR PARK ASSIST &amp; SO MUCH MORE!</p> <p><b>ONLY \$17,888</b></p> <p><b>SALE</b></p>	<p><b>'08 CHRYSLER PT CRUISER</b> BALANCE OF FACTORY WARRANTY, SUPPLEMENTAL FRONT SEAT SIDE AIR BAGS, POWER 6 WAY DRIVERS SEAT, LUMBAR ADJUST, P/WINDOWS, P/LOCKS, KEYLESS ENTRY, FORMER DAILY RENTAL</p> <p><b>ONLY \$13,988</b></p> <p><b>SALE</b></p>	<p><b>'04 DODGE CARAVAN</b> EXTENDED SERVICE CONTRACT (APRIL 09) &amp; BALANCE OF FACTORY WARRANTY, BUCKET SEATS, KEYLESS ENTRY, AM/FM/CD, P/WINDOWS, P/LOCKS, P/MIRRORS, ROOF RACK, TINTS AND MORE.</p> <p><b>ONLY \$10,998</b></p> <p><b>SALE</b></p>	<p><b>'07 JEEP COMMANDER SPORT</b> BALANCE OF FACTORY WARRANTY, LETAHER, PARKING SENSORS, PWR PEDALS, TRAILOR TOW PACKAGE, PWR SUNROOF, HEATED SEATS, RIMS, TINTS, KEYLESS ENTRY, SECURITY ALARM, FORMER DAILY RENTAL.</p> <p><b>ONLY \$29,998</b></p> <p><b>SALE</b></p>
--	---	--	--	---	---

\*Prices plus admin, PDE, E-Test, GST, PST, and licensing.

**CELEBRATING  
20  
YEARS  
In Markham**

# WOODBINE

**CHRYSLER DODGE JEEP**

905-415-2260 8280 Woodbine Ave. Markham  
(south of Hwy. 7, west side, across from Costco)

✓ online [www.woodbinechrysler.ca](http://www.woodbinechrysler.ca)

