

HONOUR GUARD



STAFF PHOTO/JIM MASON

Stouffville Spirit Jr. A hockey players past and present formed an honour guard at the funeral of their former coach and team president Pat Madigan Tuesday at St. Mark Roman Catholic Church in Stouffville. See story on page 1.

GREENBELT FOUNDATION ADVERTORIAL

Love your farmer, love the Greenbelt

Valentine's Day reminds us of the things we love – family, friends and chocolate.

Chocolate is made with milk, which is produced by farmers, many of whom are in the Greenbelt. Regardless of their product – dairy, livestock, fruits and vegetables – farmers look to the successful Greenbelt Farm Stewardship Program to help them improve their environmentally friendly farm practices.

The Program has been granted \$2.4 million by the Friends of the Greenbelt Foundation, a non-profit organization committed to creating leading and innovative practices that make the world a better, healthier place to live.

"This Program is world-leading and was created by Ontario farmers," says Shelley Petrie of the Greenbelt Foundation. "It recognizes that farmers need clean water and healthy soils to farm. We all benefit from farmers taking action to protect and improve the environment and the land."

With 480 completed projects to date, farmers in the Program have protected the quality of source water by erecting fences around ponds and stream banks, planting 20,000 trees for clean air, reducing the volume of pesticides sprayed annually on participating fruit acreage by 30%, and creating safe and secure storage of fertilizer and livestock manure.

"Farmers' concern for the land is important to the Greenbelt and Ontarians," says Petrie.

The Greenbelt, 1.8 million acres of protected land wrapping around the Golden Horseshoe, includes over 7,000 farms protected from development. Greenbelt farmers produce over 100 varieties of vegetables, all types of meat, fruits, specialty products like herbs and honey -- and milk for chocolate -- for you and your loved ones!

www.OurGreenbelt.ca



Looking for Stouffville Events?

yorkregion.com
it clicks home

Go to where the most are listed!

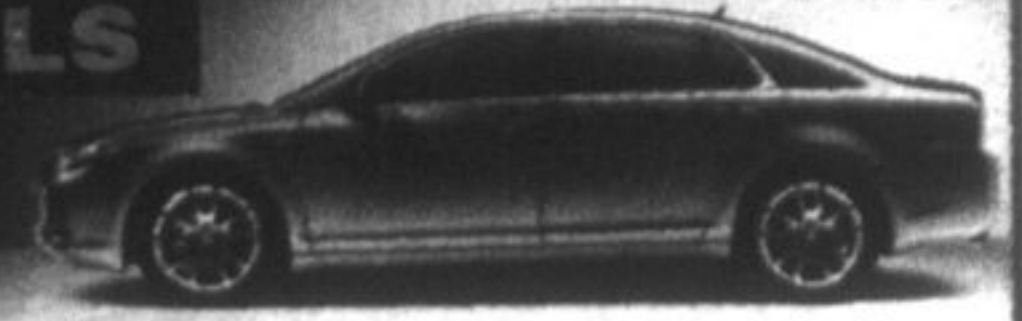
NICK'S PICK'S

'08 MALIBU LS

All new re-designed Malibu

\$22,995

Plus freight, air and applicable taxes



4 Door Sedan, Auto, A/C, PW, PL, PM, Halogen Headlamps, AM/FM/CD, Keyless Entry, OnStar* and more.

Available for immediate delivery!



'08 UPLANDER LS

FREE remote start this week only

\$18,998

Plus freight, air and applicable taxes

7 Pass, A/C, PW, PL, PM, ABS Brakes, AM/FM/CD, Keyless Entry, OnStar* and more.

Markville 5336 Hwy #7, Markham
CHEVROLET • CORVETTE INC. 905-294-1440

Town of WHITCHURCH-STOUFFVILLE Country Lifestyle Close to the City

TENDER WS-T-08-08

SUPPLY OF TWO (2) NEW HALF TON PICK-UP TRUCKS FOR THE TOWN OF WHITCHURCH-STOUFFVILLE

Tender documents for the supply of two (2) new half ton pick-up trucks are available at the Municipal Offices, Clerk's Department, 37 Sandiford Drive, 4th Floor, Stouffville.

Tenders will be accepted until 3:00 pm, Wednesday, March 5, 2008.

TENDER WS-T-08-06

JANITORIAL CLEANING SERVICES AT THE TOWN OF WHITCHURCH-STOUFFVILLE PUBLIC LIBRARY; MUNICIPAL OFFICES; MUSEUM; BALLANTRAE COMMUNITY CENTRE; LEMONVILLE COMMUNITY CENTRE; VANDORF COMMUNITY CENTRE AND STOUFFVILLE TRAIN STATION

Tender documents for janitorial cleaning services at the Town of Whitchurch-Stouffville Public Library; Municipal Offices; Museum; Ballantrae Community Centre; Lemonville Community Centre; Vandorf Community Centre and Stouffville Train Station, are available at the Municipal Offices, Clerk's Department, 37 Sandiford Drive, 4th Floor, Stouffville.

Tenders will be accepted until 3:00 pm, Wednesday, March 5, 2008.

If further information is required on the above tenders, please contact Mr. Rob Raycroft, Manager of Facilities and Parks, at (905) 640-1910, ext. 290.

The Corporation of the Town of Whitchurch-Stouffville reserves the right to accept or reject any tender and also reserves the right to accept other than the lowest tender.

INTERNATIONAL WOMEN'S DAY LUNCHEON

Presented by the Whitchurch-Stouffville Chamber of Commerce

Thursday, March 6th, 2008

Sleepy Hollow Golf & Country Club
13242 10th Line

Networking 11:30 am

Luncheon 12:15

Guest Speaker

Hon. Jean Augustine

'First Black Women elected to the Parliament of Canada'

Call to register

\$35.00 members or non-members

to be paid prior to the event

905-642-4227

(sponsored by Whitchurch-Stouffville Women of Distinction)

Featured Guest Speaker Saturday & Sunday

of Breakfast Television

MARKHAM SPRING
HOMESHOW
www.markhamhomeshow.com

Are you looking for remodelling ideas for your home or a new landscape design?
We've got it all at the Markham Spring Home Show
Over 100 Exhibitors
Guest Speakers & How-To Demo's
MANY PRIZES TO BE WON, INCLUDING...

- \$1000 CASH each day compliments of YRMG Events Management
- 1 of 2-\$2500 Gift Certificates towards your landscaping compliments of

A GUNBERT
LANDSCAPING & GARDEN MAINTENANCE

- A General Aire 1042 Humidifier valued at \$375.00 compliments of Sheridan Heating & Air
- 1 of 3 \$500 gift certificates towards a bathroom renovation compliments of ultimaterooms.ca Ltd.

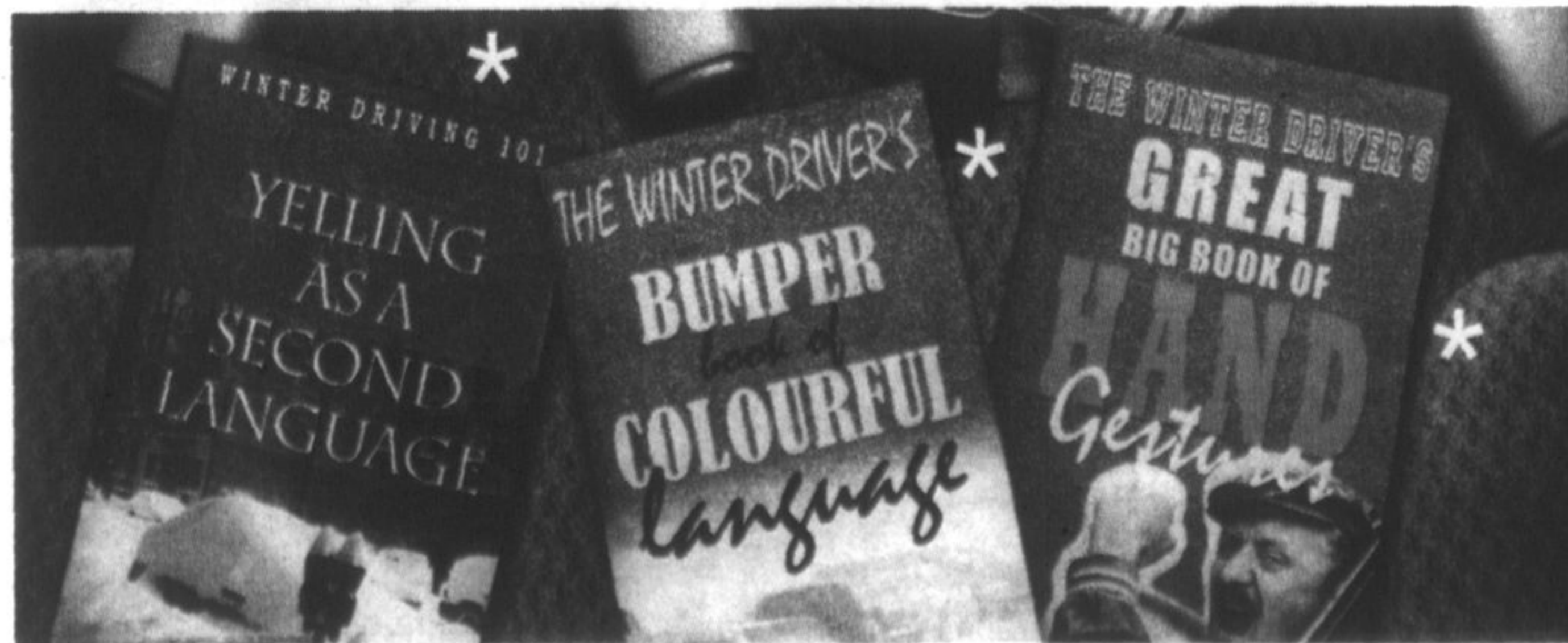
EXHIBIT SPACE STILL AVAILABLE

If you would like to be part of this event, please call
Judy 905.294.2200 ext 226 • jheffernan@yrmg.com
Susan 905.294.2200 ext 239 • sobrien@yrmg.com
Linda 905.294.2200 ext 262 • lstrong@yrmg.com

Friday February 29 1:00pm-9:00pm	Saturday March 1 10:00am-7:00pm	Sunday March 2 10:00am-5:00pm
---	--	--

yrmg
events management
YORK REGION MEDIA GROUP

Markham Fairgrounds • McCowan Road & Elgin Mills



* Not required reading for bus riders.

Winter driving isn't pleasant. Neither are winter drivers.
This winter, discover a nicer you. Ride.

York, connected. yrt.ca

