

**Town still wants to know how it's doing**

If you've received a call from the Town of Whitchurch-Stouffville asking how well doing and you haven't responded yet, it is still waiting to hear from you.

The town is about half way

through a customer satisfaction survey and "we wanted to encourage residents who receive a call to participate," the deputy clerk, Andrew Brouwer, said.

The information being gathered from local residents will help the town to understand residents' satisfaction with services and programs.

Data will be used to develop

and improve programs and services and as a benchmark for measuring improvements.

Since not all residents can be phoned, you can fill out a survey at the town offices and the Lebovic Leisure Centre in Stouffville, the Whitchurch-Stouffville Museum in Vandorf, during regular business hours, or online at [wscmunitysurvey.dpra.com](http://wscmunitysurvey.dpra.com) to have

your say.

The surveys are being conducted by DPRA, the town's independent consultant. All survey responses are confidential.

The results will likely be released late in April.

For more information, contact the town at 905-640-1900, ext. 321.

# Nominate businesses for awards

If you know of a talented young entrepreneur in town, have gotten great service from a business or want to pay tribute to a long-standing business, the Whitchurch-Stouffville Chamber of Commerce needs to hear from you by Feb. 22.

All residents and businesses are eligible to nominate outstanding individuals and businesses for the 2008 Business Awards.

The categories are business of the year, business entrepreneur of the year, corporate citizen of the year, young entrepreneur of the year and the heritage award.

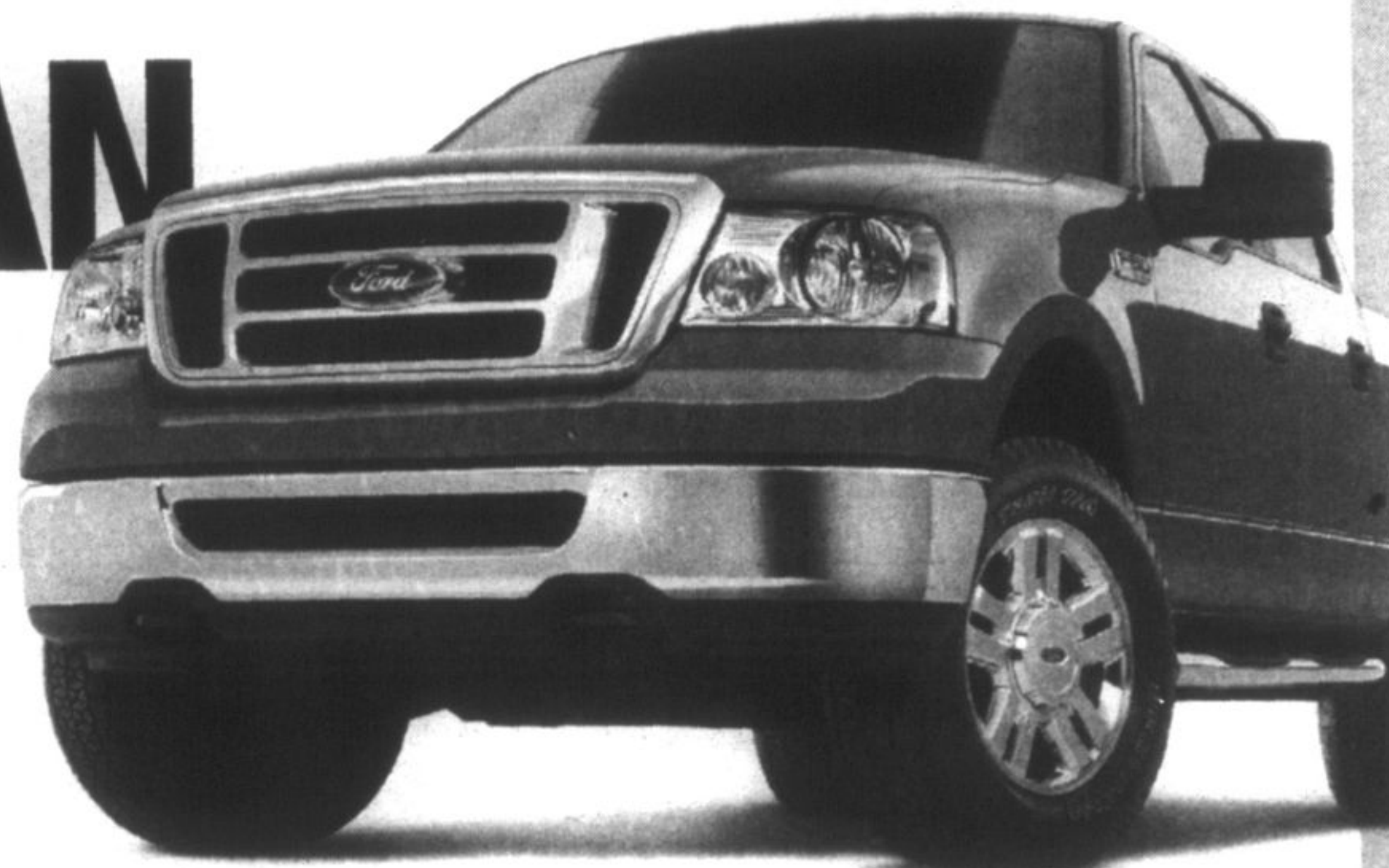
Nomination forms have already been mailed to all chamber members and many non-member businesses, as well.

The winners will be honoured at an awards dinner April 24. It takes place at the Meadowbrook Golf and Country Club, 11939 Warden Ave., south of Stouffville Road.

For a nomination package, call the chamber at 905-642-4227.

For more information on the chamber, visit [whitchurchstouffville.ca](http://whitchurchstouffville.ca)

# THE GREAT CANADIAN DEAL



**Get a truck as strong as the Canadian dollar.**  
2008 Ford F-150 SuperCrew XLT Standard Features include:

- 4.6L V8 Engine
- Power Windows, Locks and Mirrors
- AM/FM Stereo with CD Player
- Remote Keyless Entry
- Air Conditioning
- Automatic Transmission

**XTR PACKAGE INCLUDES:**

- CHROME 18" WHEELS
- LEATHER WRAPPED STEERING WHEEL
- 5" CHROME RUNNING BOARDS
- ALL-TERRAIN TIRES
- CHROME GRILLE
- CHROME EXHAUST TIP

DISCOUNT OF \$600

**2008 FORD F-150 SUPERCREW XLT 4X4 WITH XTR PACKAGE**

**\$399\*** WITH **0.5% APR**  
LEASE FOR ONLY

per month for 36 months with \$3,500 down payment or equivalent trade after delivery allowance of \$3,575 and XTR package discount of \$600 deducted. Freight \$1,250. **\$0 SECURITY DEPOSIT.\*\***

Or purchase the **2008 F-150 REGULAR CAB XL**

starting at **\$19,699†**

F-Series is Canada's Best-Selling line of pick-ups for 42 years.™

DOWN PAYMENT	MONTHLY PAYMENT*
\$0	\$497
\$1000	\$469
\$2500	\$427

**A price and truck impossible for Canadians to resist.**

2008 Ford Ranger Sport Standard Features include:

- CD/MP3 with Audio Input
- SIRIUS Satellite Radio with 6-Month Prepaid Subscription††
- SecurILock® Passive AntiTheft System
- Tailgate with Quick Release
- Tire Pressure Monitoring System
- Fog Lamps
- 15" Machined Aluminum Wheels
- Tie Down Hooks (Cargo Box)

Or purchase the **2008 FORD RANGER FEL** starting at **\$13,989†**

**2008 FORD RANGER SPORT SUPERCAB**

**\$292\*\*** WITH **\$0** AND **0% APR**  
OWN FOR ONLY DOWN PAYMENT

per month for 60 months after delivery allowance of \$1,000 deducted. Freight of \$1,200.

Get **0%\*\*** 60 MONTH purchase financing on ALL 2008 Ranger



Hurry into your Ontario Ford Store for your Great Canadian Deal.



[ford.ca](http://ford.ca)

**Built for life in Canada**



WISER BUYERS READ THE LEGAL COPY: Offer Valid in Ontario only. †Purchase a new 2008 Ford F-150 Regular Cab XL / 2008 Ford Ranger Regular Cab FEL starting from only \$19,899/\$13,989 (after delivery allowance of \$2,500/\$500 and FEL Discount of \$0/\$910 deducted). Taxes are payable on full amount of purchase price after delivery allowance of \$2,500/\$500 deducted. \*\*Purchase Finance a 2008 Ford Ranger SuperCrew XLT 4x4 for \$292 per month for 60 months with 0.0% APR purchase financing and \$0 down payment (after delivery allowance of \$1,000 deducted) to qualified retail customers, on approved credit from Ford Credit, or purchase a 2008 Ford Ranger SuperCrew Sport for \$17,520 (after delivery allowance of \$1,000 deducted). 0% APR Purchase Financing for up to 60 months is available on ALL 2008 Ford Ranger models. E.g., \$20,000 purchase financed at 0.0% purchase APR for 60 months, monthly payment is \$333.33, cost of borrowing is \$0 or APR of 0.0% and total to be repaid is \$20,000. Down payment on purchase financing offers may be required based on approved credit. †Lease a new 2008 Ford F-150 SuperCrew XLT 4x4 with XTR Package for only \$399/\$427/\$469/\$497 per month (after delivery allowance of \$3,575 and XTR Package discount of \$600 deducted) based on an annual lease rate of 0.5% and a 36 month lease from Ford Credit to qualified retail lessees, on approved credit. Total lease obligation is \$17,864/\$17,872/\$17,884/\$17,892. Optional buyout is \$17,819.56. Some conditions and mileage restrictions of 60,000km over 36 months apply. A charge of 12 cents per km over mileage restrictions applies, plus applicable taxes: \$3500/\$2500/\$1000/\$0 down payment required. All lease payments are calculated with no trade-in. First month's payment and \$0 security deposit required. All offers exclude freight (2008 Ford F-150 \$1,250 / 2008 Ford Ranger \$1,200) license, insurance, registration, PPSA, administration fees and all applicable taxes. ††Based on Canadian Vehicle Manufacturers' Association statistical sales report, December 2007. ††No Security Deposit on all 2008 Ford vehicles (excluding the 2008 Ford Shelby GT 500, Ford GT, Econoline Cutaways and Stripped Chassis, Ford F-Series Chassis Cabs, Ford Medium Trucks and LCF) effective January 6, 2008 until March 31, 2008. Security Deposit may be required by Ford Credit based on customer credit terms and conditions. Dealer may sell or lease for less. Limited time offers. Offers may be cancelled at any time without notice. †See your Ford of Canada Dealer or contact SIRIUS at 1-888-539-7474 for more information. \*SIRIUS and the SIRIUS dog logo are registered trademarks of SIRIUS Satellite Radio Inc. Includes 6 month prepaid subscription. \*\*Some conditions may apply to the Graduate Recognition Program. See Dealer for details. Ontario FDA, P.O. Box 2000, Oakville, Ontario L6J 5E4

**ATTENTION**  
Community Organizations!  
Are You Looking for Free Materials?

**ReUseful**  
Check out ReUseful, [yorkregion.com](http://yorkregion.com)'s Free Online Trading Post for gently used items.

**yorkregion.com**  
it clicks home

**Attention Community Organizations:**

**Post your events FOR FREE!**

**IT'S EASY REGISTER TODAY!**  
go to <http://pop.yorkregion.com> or email us [scclark@yrmg.com](mailto:scclark@yrmg.com) or [nmoore@yrmg.com](mailto:nmoore@yrmg.com)

**pop.yorkregion.com**  
Your single source for local events