

Chamber hopes to heal rift with BIA

BY HANNELORE VOLPE
Staff Writer

This is the year for change for the Whitchurch-Stouffville Chamber of Commerce.

It intends to forge a closer working relationship with the Stouffville Business Improvement Area, local merchants and the town.

NEW CHAIRPERSON

So says new board chairperson Karen Cashin of the YMCA Stouffville Employment Resource Centre.

A rift had appeared this fall between the chamber and the BIA after chamber president Helene Johnson criticized

local merchants for some of their business practices.

Mrs. Cashin was one of three executive members elected at the chamber's annual general meeting this month. The others are the treasurer, Dave Bolan of Southwire Canada, and secretary, Vicki Wilhelm of Visual Perspective.

The annual meeting had the largest attendance Mrs. Johnson had ever seen. "Everyone was positive," she said.

The chamber represents the interests of businesses throughout the municipality, Mrs. Cashin said, and welcomes input from all of them.

The chamber plans to launch a lunch-and-learn series for businesspeo-

ple, as well as other initiatives.

Business retention is another important issue the chamber will be working on in co-operation with town staff.

LAUNCHING PROGRAMS

The chamber has around 145 corporate members.

It offers benefits for its members and networking and speaker events.

The chamber operates an information centre in the Stouffville Train Station and also sells GO Transit tickets.

For more information on the Whitchurch-Stouffville Chamber of Commerce, visit whitchurch-stouffville.ca or call 905-642-4227.

MERCHANTS NETWORK

The Whitchurch-Stouffville Chamber of Commerce is hosting the following events:

► A networking breakfast will be held Feb. 14 from 8 to 9 a.m. at Buckingham Manor, 6257 Main St.

► The chamber's annual pancake breakfast is on March 27 from 8 to 9 a.m. at Bruce's Mill Conservation Area, 3291 Stouffville Rd.

Free to members, the cost is \$15 for non-members to each event.

Call 905-642-4227 for reservations.

If the liver, acute hepatitis failure, Alagille's syndrome, Anderson's disease, Biliary fistula, Biliary disease, cancer of the liver, cirrhosis, disease, Cholangiocarcinoma, Cholelithiasis, Cholelithiasis, Cholesteryl ester storage disease, Cystic disease, Crigler-Najjar syndrome.

FIGHT OVER 100 DISEASES WITH ONE DONATION

These are just a few of the over 100 liver-related diseases that threaten the lives of more than 2 million Canadians men, women and children. For 25 years now, the Canadian Liver Foundation has been leading the fight against liver disease and to continue, we need your help. One simple act of kindness can go so very far.

1320 Yonge Street, Suite 301, Toronto, Ontario
M4T 1X2 1-800-563-5483
This message brought to you as a community service of The Economist & Sun Tribune

0% up to 72 months
\$139 Bi-Weekly, Tax included
\$ ZERO DOWN!

4 Door Sedan, PW, PL, AC, AM/FM/CD player, and much more.

0% EQUINOX LS
\$1000 Down Smart Lease Special!

\$329 per month + tax @ 0.5% APR

Keyless entry with remote start, PW, PL, PM, AM/FM/CD, ABS brakes, OnStar 17" alum. wheels, deep tinted glass, cruise & more.

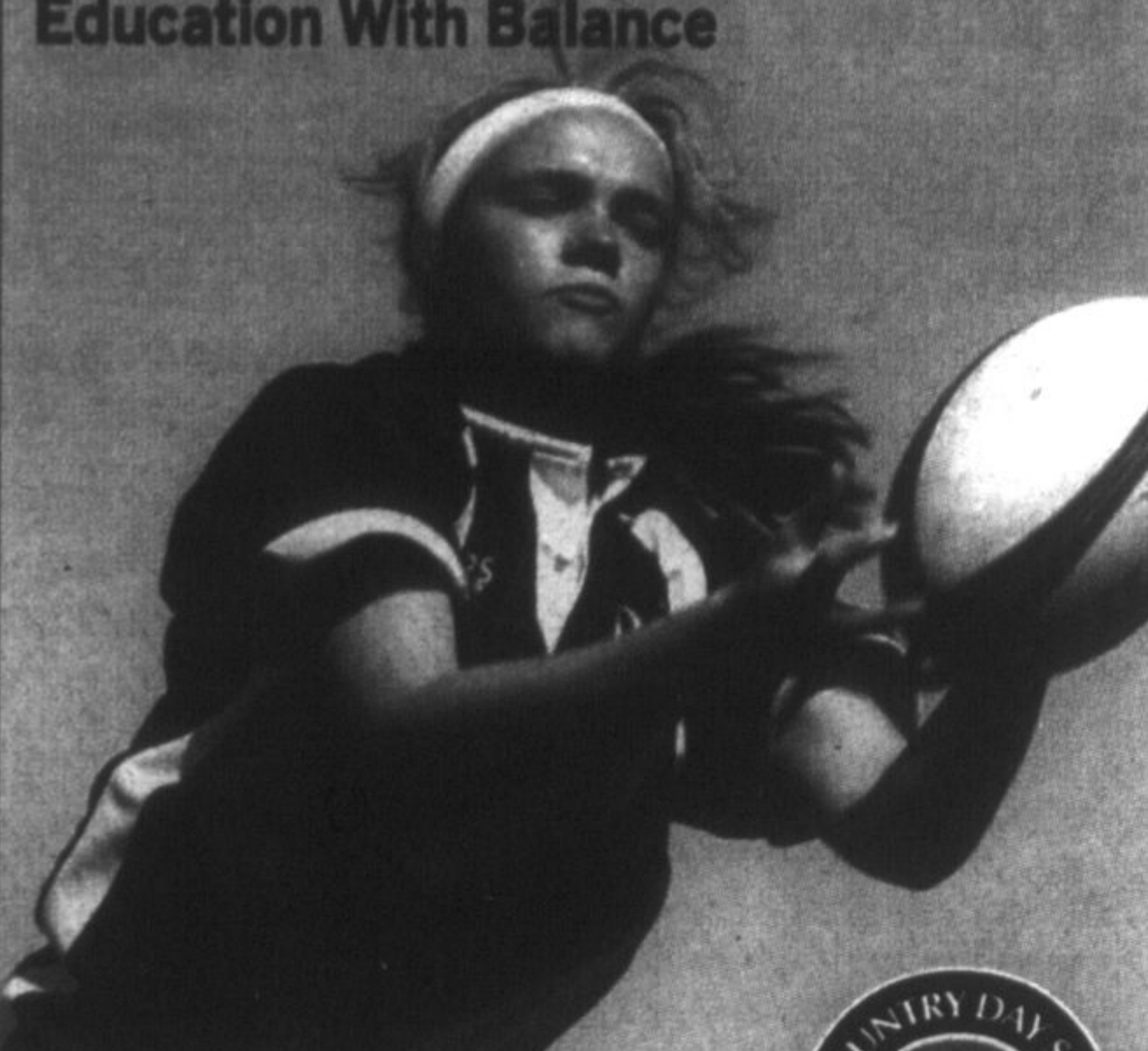
Markville
CHEVROLET • CORVETTE INC.


NICK'S PICK'S

5336 Hwy #7 Markham
905-294-1440

ASTHMA?
We can help. Call The Lung Association
THE LUNG ASSOCIATION

Education With Balance






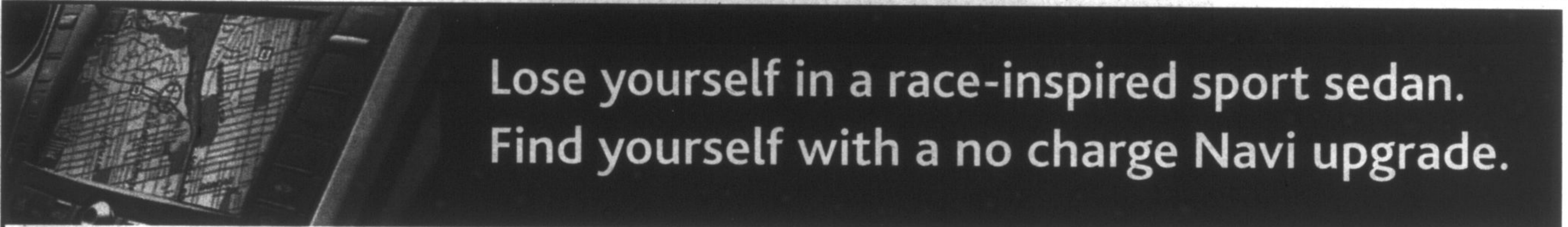
The Country Day School offers a superior, balanced education that challenges the student, develops the mind, and strengthens the character, all in a safe and natural setting. A co-ed, university-preparatory school offering JK to Grade 12.

Open House
Saturday, February 9, 2008 9am-12pm
Application deadline: February 15, 2008

13415 Dufferin Street
King, ON L7B 1K5
905.833.1220
admissions@cds.on.ca
www.cds.on.ca

Please contact us at any time to arrange a personal tour.





Lose yourself in a race-inspired sport sedan.
Find yourself with a no charge Navi upgrade.

TSX 0.9% LEASE APR 36 MONTHS †
\$368 /MONTH \$4,850 DOWN PAYMENT
PLUS: ACURA NAVI UPGRADE AT NO CHARGE
A \$2,800 VALUE **



TL 0.9% LEASE APR 36 MONTHS †
\$398 /MONTH \$4,850 DOWN PAYMENT
PLUS: ACURA NAVI UPGRADE AT NO CHARGE
A \$3,100 VALUE **

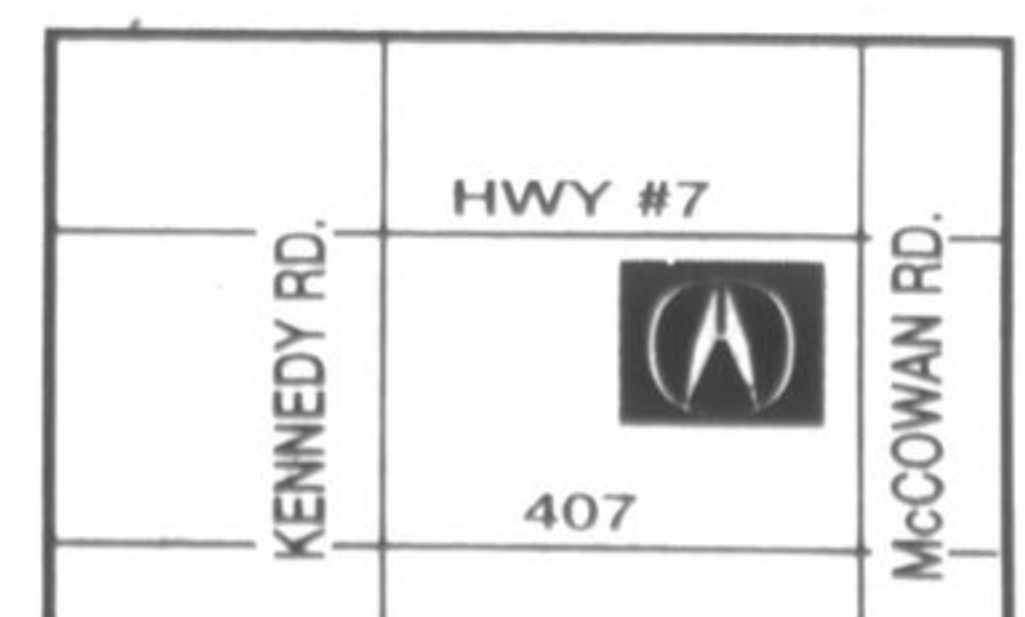


† Limited time lease offers on a new 2008 Acura TSX (Model CL9588) // TL (Model UA6628) available through Honda Financial Services Inc. on approved credit. Taxes, licensc, insurance, and registration are extra. 0.9% lease APR for 36 months. Monthly payment is \$368 // \$398 with \$4,850 down payment, \$1,725 // \$1,825 freight and PDI, first monthly payment, 50 security deposit, and \$75 gas conservation tax due at lease inception. Total lease obligation is \$19,898 // \$21,078. 72,000-kilometer allowance, charge of \$0.15/km for excess kilometers. Retailer may sell/lease for less. Retailer order/trade may be necessary. **\$2,800 // \$3,100 value is the difference between the MSRP of a new 2008 Acura TSX (Model CL9588) // TL (Model UA6628) and a new 2008 Acura TL (Model CL9588) // TL Navigation Package (Model UA6628K). No charge Acura Navigation Package offer valid until January 31, 2008. Honda Canada Inc. reserves the right to cancel or amend this offer at any time without notice or incurring obligation. Cannot be combined with any other offer. See your Acura retailer for full details.

ACURA IN MARKHAM

5201 Highway #7 East
across from Markville Mall

905-948-8866
AcuraInMarkham.ca



Prices are plus applicable taxes, licence, registration and insurance. Vehicles may not be exactly as shown. 0.9% financing on \$10,000 payment \$331.21 cost of borrowing \$164.19. Please contact Acura in Markham.