

# Two pastors share 5-point country charge

LEMONVILLE — Rev. Arnold Foster and his student assistant, Robert Thompson of Trent University, call the five churches, under their ministry, their 'Bugle Charge'.

Included are points in Ballantrae, Utica, Goodwood, Lemonville and Epsom.

Their 'expanded ministry' is not an inter-denominational program, but a 3-year experiment by the United Church in serving its smaller rural parishes.

Rev. Foster is sure that other churches, concerned by the effects of economic and social change on their rural parishes, are conducting similar studies.

The congregation totals 225 in the 5 churches. The largest membership is at Lemonville and a strong 'youth group' flourishes there.

"Another group is starting up in the Utica area," the pastor comments. "The church is not dead by any means."

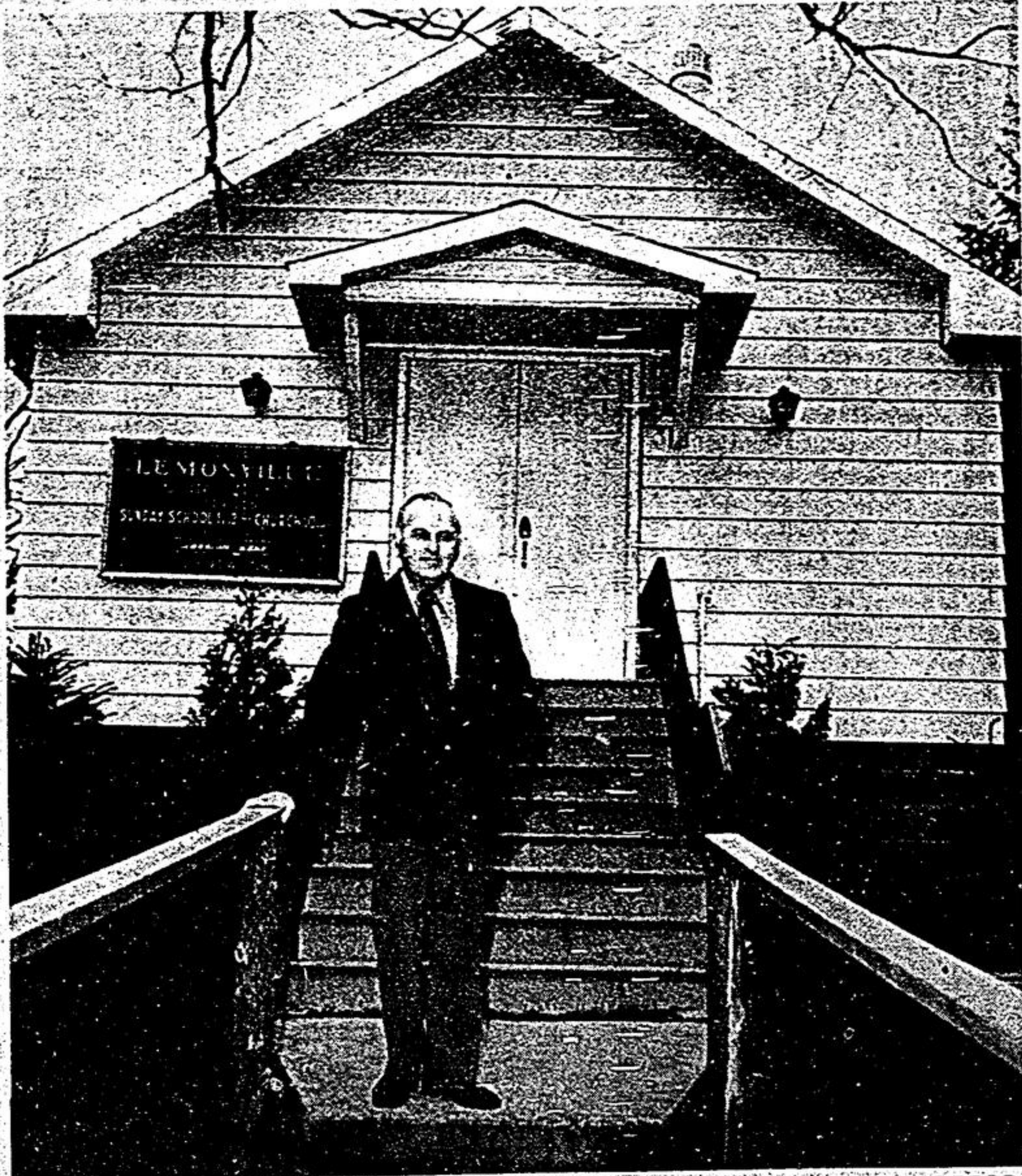
He concedes, however, that denominational services are changing. "The key word now is 'celebration' rather than 'worship'. Young people are looking for a religion with more emotional expression, or for the mysticism bit. Neither," he concludes, "fits old, traditional churches."

Rev. Foster is a minister with a city background. His home church is High Park Avenue United. He graduated from Emmanuel College; was ordained in 1948; was involved in inter-denominational Christian education and youth work throughout Ontario and served for 15 years in urban-suburban parishes. His last charge was Sheridan-Park Royal, Mississauga.

In assessing the one church ministry, against a pastorate of five, he comments, "There's a little more continuity in one church. Now, I may start one thing and it becomes frustration at times to retain contacts."

What would his sentiments be if the small community church was phased out of the rural scene, like the little red schoolhouse, and regionalized?

"I find it hard to see why people who travel 15 miles for shopping would not do the same for church worship. At the same time, I realize and appreciate the amount of sentimental attachment people in rural communities have for their church," he replied, and added, "The only positive thing I can say is, I don't think the church can stand still in its present status."



Rev. Arnold Foster is the pastor of Lemonville United Church, one point in a charge that includes five churches. His student assistant is Robert Thompson of Goodwood. The cooperative ministry is an experimental program, adopted by the United Church, in an effort to serve the smaller parishes in rural areas.

## NOW APPEARING



through to  
**SAT. NOV. 25**  
**GRAHAME HARRIS**  
**DUO**  
Instrumentalists

ENTERTAINMENT TUES. THROUGH SAT. 9 P.M. TO 1 A.M.  
ALSO SUNDAYS 7 P.M. TO 10 P.M.  
Good Food — Reasonable Prices — Great Entertainment.  
Licensed by the L.C.B.O.



SHERWOOD PLAZA — MARKHAM — 297-2590

### Ladies Lg.

STOUFFVILLE Doris Dunstall rolled a high single of 225, while Barb Morley and Rose Kennedy had high triple scores of 563, Nov. 7, in the Tuesday Afternoon Ladies Bowling League.

Over 200 were Doris Dunstall, 225; Rowena Lehman, 218; Barb Emmorey, 214; Jean Dart, 214; Barb Morley, 205-203.

### ALTONA MISSIONARY CHURCH

**SPECIAL SERVICES**  
WED., NOV. 15, 1972 — 8 P.M.  
Evangelist: Rev. Geo. Peck of Port Hope

Thurs. & Fri., 8 p.m.  
Youth Nights with the Tyme Singers  
Sunday, Nov. 19, Morning Service, 11:15 a.m.  
Evening Service 7:30 p.m. with the Ambassadors singing and Rev. Geo. Peck Preaching.

**YOU ARE CORDIALLY INVITED**  
Pastor: Donald P. Pugh

### BARKER ROOFING and SIDING



REPAIRS —  
**RE-ROOFING OUR SPECIALTY**  
Free Estimates 640-4966

## Nothing Runs Like a Deere



**JOHN DEERE SNOWMOBILES**  
have the features to prove it.  
Accessories — Parts — Service  
No Finance Charges Until March 1st

### Hutchinson Farm Supply

Hwy. 48 3 1/2 miles N. of Ringwood  
Phone 640 2699

# You're probably losing 20% a year in interest on your savings account.

Most savings accounts pay you only 4% interest on your minimum monthly balance. Guaranty Trust pays 5%. That means for every \$1,000 in your savings account you're losing over \$10 a year in interest.

There's just one other difference between a Guaranty Trust savings account and other savings accounts: Until November 30, Guaranty Trust will pay you a full month's interest no matter what day of the month you open up your savings account as long as you leave the money with us for 90 days.

Even if you open your account on the last day of the month, you still get paid 5% interest for the whole month.

That way you don't lose one cent of interest by moving your savings account to Guaranty Trust.

What is more, you don't even have to come in to Guaranty Trust to open up a savings account. Just give us a phone call and we'll take care of everything for you by mail.

## Guaranty Trust

Where the smart money goes.

81 Main Street West 640-4000  
Member of Canada Deposit Insurance Corporation

# Missionaries return to Africa

STOUFFVILLE — A 'bon voyage' dinner for Albert and Annie Drudge was held at the home of Mr. and Mrs. Frank Burkholder, Main St. West, Nov. 12.

Mr. and Mrs. Drudge were returning to Nyanga, 600 miles east of Kinshasa, the capital of Zaire (Belgium Congo), the following day.

The couple have been volunteer missionaries there for two years and returned a month ago on a business-holiday trip.

Mr. Drudge said his first impression of Canada, on returning from the warm weather of underprivileged Zaire, was that it was 'cold and rich'.

He explained that he and his wife are with

the Mennonite Central Committee, a social relief agency. They were active for many years in Steeles Avenue Mennonite Church and first became interested in missionary work after an overseas trip in 1965.

Consequently, they left their farm, lot 17, conc. 10, Markham, to join the Nyanga mission, where he took charge of maintenance and construction work.

Their assignment ends in another year.

Frank Burkholder is Mrs. Drudge's brother-in-law. Other relatives present to bid the couple farewell were Mr. and Mrs. Ken Drudge and Kelly, Oshawa; Mr. and Mrs. Frank Barkey and Mrs. Mary Pickering; Mr. and Mrs. Wade Brown, Locust Hill.

### Drama tickets available

Tickets for the coming performance of "Look Back in Anger" by the Stouffville Drama Club, Nov. 16-17-18, can be purchased at either Card's Hardware or Tribune office Supplies store.

## STORE WIDE FLOOR MODEL CLEARANCE SALE

CHESTERFIELD BEDS, KITCHEN SETS, UNPAINTED FURNITURE, CHESTS, DRESSERS, NIGHT TABLES, ETC.

**Save Save Save**  
THURS., FRI., SAT. ONLY

**JOHN'S HIDEAWAY**  
26 MAIN ST. N., MARKHAM — 294-3352

### RE LIQUOR LICENCE ACT VOTE.

ONTARIO FORM 405

# PROCLAMATION

THE MUNICIPALITY OF  
THE TOWN OF WHITCHURCH-STOUFFVILLE

## Portion Of The Former Township of Whitchurch and Former Village of Stouffville

Public notice is hereby given, that in accordance with the provisions of The Liquor Licence Act, and in pursuance of a by-law passed by the municipal council of the said Municipality on the 28th day of September, 1972, I require the presence of the voters at the Council Chambers of the said Municipality on the 20th day of November, 1972:

at one o'clock in the afternoon, Standard Time, at which time I will announce the names of the persons appointed to act for the Affirmative and for the Negative respectively upon the poll to be held under Section 73 of The Liquor Licence Act, upon the following question:

Are you in favour of the sale of liquor under a dining lounge licence for consumption on licensed premises with food available?	Yes
	No

And further, that for the purpose of revising the list of voters, as directed by the Chief Election Officer, I shall be at my office at The Municipal Offices 19 Civic Avenue, Stouffville on Tuesday, November 21st, 1972 from the hour of 9:00 A.M. until 5:00 P.M. and from 6:00 P.M. until 8:00 P.M. Standard Time

And notice is further given that the vote will be taken upon the same question in the manner provided by law at a poll to be opened on the

## 4th DAY OF DECEMBER, 1972

from the hour of 11:00 a.m. until 8:00 p.m. (Standard Time) at the following places:

See follow sheet for Description of Polling Subdivisions and Location of Polling Places

The Preliminary List of Electors as posted for the year 1972 will be used for taking of this Vote. The List should be checked. Only Residents of the Areas (referred to above) are entitled to vote on the question.

ADVANCE POLL will be held at the same time and at the same places as the Advance Poll for the Municipal Elections namely on November 27th and December 2nd from the hour of 11:00 A.M. until 8:00 P.M. on each day.

See follow sheet for Location of Polling Places.

And further, that at the Municipal Office of the Town of Whitchurch-Stouffville on December 5th, 1972 at the hour of 12 noon (Standard Time) I shall open the ballot boxes, add up the votes given upon the said question, or questions and declare the result of the said vote in the said Municipality of which all persons are hereby required to take notice and govern themselves accordingly. Given under my hand at Stouffville this 9th day of November, 1972.

### GOD SAVE THE QUEEN

Every person who wilfully destroys, injures or obliterates, or causes to be destroyed, injured or obliterated a Will of Election, Return to a Will of Election, Poll Book, List of Voters, Polling List, Certificate or Affidavit, or other document or paper made, printed or drawn according to or for the purpose of effecting the requirements of the Election Act, or any of them, is guilty of an offence and of a corrupt practice and on summary conviction is liable to a fine of not more than \$1,000.

R. E. CORNER  
RETURNING OFFICER

### Two advance poll locations:

#### WARD 1, WARD 2 & WARD 3

Polling Place - Vander Hall  
November 27th & December 2nd - Hours 11 a.m. - 8 p.m.

#### WARD 4, WARD 5 & WARD 6

Polling Place - Municipal Office, Stouffville  
November 27th & December 2nd - Hours 11 a.m. - 8 p.m.

### POLLING SUBDIVISIONS

#### WARD ONE (1)

Polling Subdivision No. 1  
Consisting of Lots 26 to 28 inclusive in Concessions 1 and 2 and Lot 29 in the Township of Whitchurch.

Polling Place: Cedar Valley Pool Office

Polling Subdivision No. 2  
Consisting of Lots 26 to 28 inclusive in Concessions 3 and 4 and Lot 29 in the Township of Whitchurch.

Polling Place: Pine Orchard Union Church

Polling Subdivision No. 3  
Consisting of Lots 26 to 28 inclusive in Concessions 5 and 6 and Lot 29 in the Township of Whitchurch.

Polling Place: Vander Hall

Polling Subdivision No. 4  
Consisting of Lots 26 to 28 inclusive in Concessions 7 and 8 and Lot 29 in the Township of Whitchurch.

Polling Place: Cedar Valley Pool Office

Polling Subdivision No. 5  
Consisting of Lots 26 to 28 inclusive in Concessions 9 and 10 and Lot 29 in the Township of Whitchurch.

Polling Place: Cedar Valley Pool Office

Polling Subdivision No. 6  
Consisting of Lots 26 to 28 inclusive in Concessions 11 and 12 and Lot 29 in the Township of Whitchurch.

Polling Place: Cedar Valley Pool Office

Polling Subdivision No. 7  
Consisting of Lots 26 to 28 inclusive in Concessions 13 and 14 and Lot 29 in the Township of Whitchurch.

Polling Place: Cedar Valley Pool Office

#### WARD (5)

Polling Subdivision No. 1  
Consisting of that part of the former Village of Stouffville, an area bounded on the north by Main Street, on the east by Highway No. 4, on the south by South Street and on the west by Main Street.

Polling Place: Cedar Valley Pool Office

Polling Subdivision No. 2  
Consisting of that part of the former Village of Stouffville, an area bounded on the north by Main Street, on the east by Highway No. 4, on the south by South Street and on the west by Main Street.

Polling Place: Cedar Valley Pool Office

Polling Subdivision No. 3  
Consisting of that part of the former Village of Stouffville, an area bounded on the north by Main Street, on the east by Highway No. 4, on the south by South Street and on the west by Main Street.

Polling Place: Cedar Valley Pool Office

Polling Subdivision No. 4  
Consisting of that part of the former Village of Stouffville, an area bounded on the north by Main Street, on the east by Highway No. 4, on the south by South Street and on the west by Main Street.

Polling Place: Cedar Valley Pool Office

Polling Subdivision No. 5  
Consisting of that part of the former Village of Stouffville, an area bounded on the north by Main Street, on the east by Highway No. 4, on the south by South Street and on the west by Main Street.

Polling Place: Cedar Valley Pool Office

Polling Subdivision No. 6  
Consisting of that part of the former Village of Stouffville, an area bounded on the north by Main Street, on the east by Highway No. 4, on the south by South Street and on the west by Main Street.

Polling Place: Cedar Valley Pool Office

Polling Subdivision No. 7  
Consisting of that part of the former Village of Stouffville, an area bounded on the north by Main Street, on the east by Highway No. 4, on the south by South Street and on the west by Main Street.

Polling Place: Cedar Valley Pool Office

Polling Subdivision No. 8  
Consisting of that part of the former Village of Stouffville, an area bounded on the north by Main Street, on the east by Highway No. 4, on the south by South Street and on the west by Main Street.

Polling Place: Cedar Valley Pool Office

Polling Subdivision No. 9  
Consisting of that part of the former Village of Stouffville, an area bounded on the north by Main Street, on the east by Highway No. 4, on the south by South Street and on the west by Main Street.

Polling Place: Cedar Valley Pool Office

Polling Subdivision No. 10  
Consisting of that part of the former Village of Stouffville, an area bounded on the north by Main Street, on the east by Highway No. 4, on the south by South Street and on the west by Main Street.

Polling Place: Cedar Valley Pool Office