

Tribune Classified

Housing shortage 'disaster'

YORK REGION - If the Region of York

does not lower its housing standards, it will be contributing to a "disaster", a spokesman for the Urban Development Institute told Council, March 23. A study has been completed, the official said, that clearly indicates a shortage of useable residential

sites in Metro Toronto. The Institute put forward four major proposals to cope with the problem: (1). Reduction of lot sizes. (2). Reduction of living space and finishing standards. (3). Lower servicing standards. (4). The redesignation

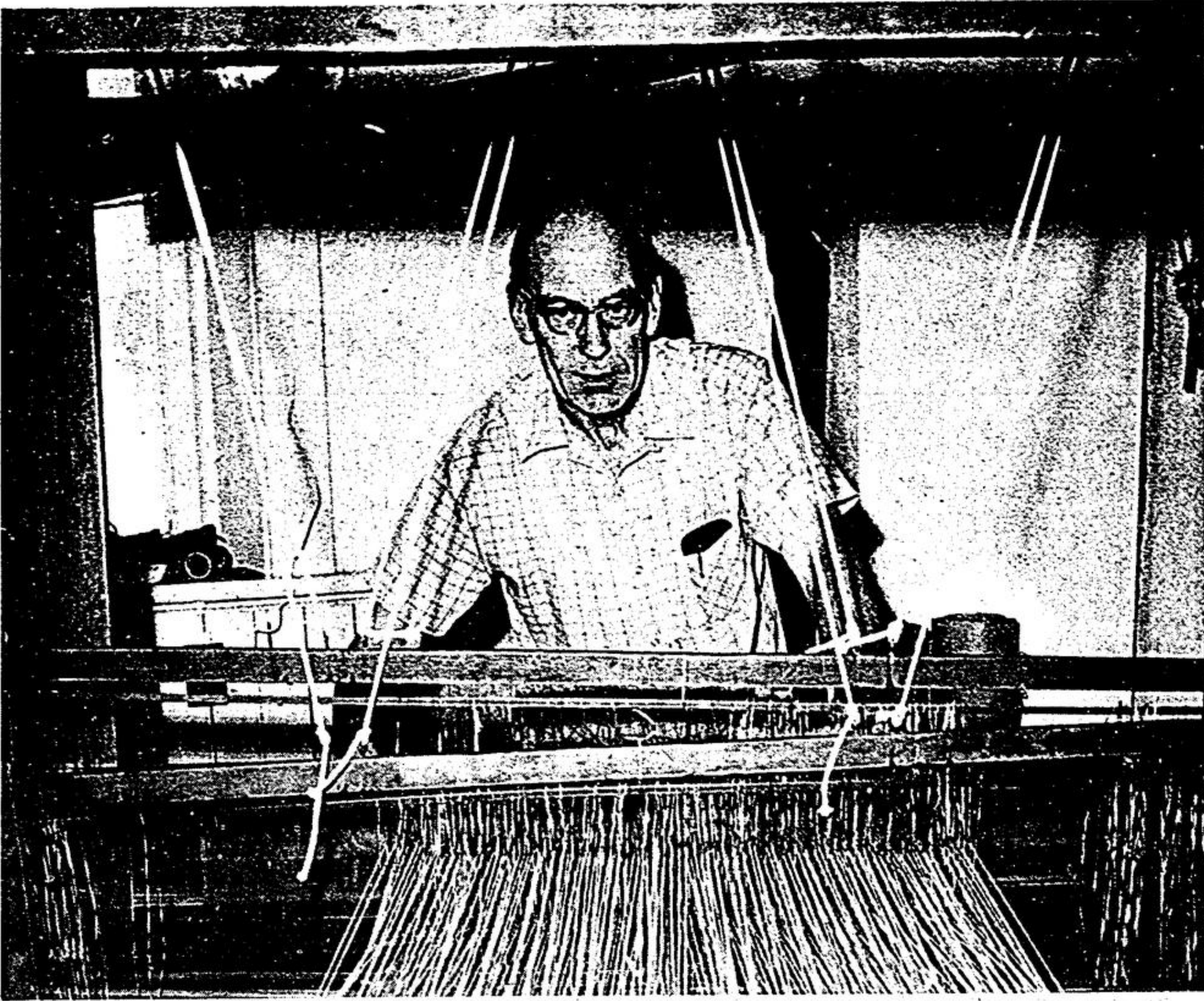
of excess industrial land for residential development. Members of Regional Council appeared unimpressed and offered no comment. The report was referred to the Planning Department for consideration.

Traffic 'red tape'

MUSS LAKE - The Case of the Vanishing Bylaw has been solved - but residents at Musselman's Lake are no closer to gaining relief from truck traffic.

Council received a letter from the Department of Transportation & Communications, at a meeting March 14. The Department had been asked to approve bylaw 71-59, which restricts heavy trucks on the roads around Musselman's Lake. The bylaw was passed last August, and nothing had been heard of it since. Letters finally produced this reply. The Department advised that York Region's assumption of roads was responsible for the delay, and promised consideration when officials determine which roads have been taken over. The roads were assumed by the Region in December. Council members noted that the eastern road, part of the 9th Concession, is now Regional.

"We might have to ask the Region to do their part on this," observed Councilor Gordon Ratcliff. Mayor Ken Lausway agreed, noting that a meeting has been set up



Saturday was 'Pioneer Day' at the Markham Museum. In addition to regular displays, many on-the-spot activities were carried on by local citizens. One of these was the operation of a 100 year old loom by Tom Rimmer, Talisman Crescent, Markham —Jim Thomas

The Regional Municipality of York Tenders For Industrial Tractors

SEALED TENDERS properly marked as to contents will be received by the undersigned until 11:00 a.m. E.S.T. on

TUESDAY, APRIL 11th, 1972

for the supply of: Three (3) — Industrial Type Tractors with Front End Loaders and Three-point Hitch

Specifications, tender forms and information to Bidders may be obtained at the office of the Engineering Department on the Don Mills Road, one and one-quarter miles north of the Aurora Road (Mailing Address: P.O. Box 296, Newmarket) on and after 12 noon Tuesday, March 28th, 1972.

The lowest or any tender not necessarily accepted.

Tenders shall be delivered to the Clerk's Office, 62 Bayview Avenue, Newmarket, Ontario.

Garfield E. Wright Chairman Robert N. Vernon Regional Clerk

The Regional Municipality of York Tenders For Gasoline & Lubricants

SEALED TENDERS properly marked as to contents will be received by the undersigned until 11:00 a.m. E.S.T. on

TUESDAY, APRIL 11th, 1972

for the supply of: Approximately 203,000 Gallons of Gasoline yearly and Lubricants

Specifications, tender forms and information to Bidders may be obtained at the office of the Engineering Department on the Don Mills Road, one and one-quarter miles north of the Aurora Road (Mailing Address: P.O. Box 296, Newmarket) on and after 12 noon Tuesday, March 28th, 1972.

The lowest or any tender not necessarily accepted.

Tenders shall be delivered to the Clerk's Office, 62 Bayview Avenue, Newmarket, Ontario.

Garfield E. Wright Chairman Robert N. Vernon Regional Clerk

The Regional Municipality of York TENDERS FOR MATERIALS

SEALED TENDERS properly marked as to contents will be received by the undersigned until 11:00 a.m. E.S.T. on

TUESDAY, APRIL 11th, 1972

for the following materials: Crushed Stone (Various Sizes) (F.O.B. plant) Crushed Gravel (Various Sizes) (F.O.B. plant) Sand (F.O.B. plant) Coldmix and Hot-mix Asphalts (F.O.B. plant) Asphalt Emulsions — RS-1, RS-2 and RS-2K Cut-back Liquid Asphalts — Prime, M.C., R.C. Calcium Chloride — bags and liquid Guide Rail Paints (Various colours) Chemical Weed Killer Tires and Tubes (truck, tractor and car) C.I.P. Culverts Snow Fence Sign Posts (steel and wood) Sign Blanks (wood, steel and aluminum) Sign Reflecting Materials

Prices shall be submitted on bidder's own letterhead and the prices shall be F.O.B. Regional Engineering Yard, Newmarket (except those items indicated F.O.B. plant) and shall include all fees, tariffs and, where applicable, Federal and Provincial Sales Tax must be indicated as included or extra. Information on the above materials may be obtained at the office of the Engineering Department on Don Mills Road, one and one-quarter miles north of the Aurora Road or P.O. Box 296, Newmarket, Ontario. The lowest or any tender not necessarily accepted. Tenders shall be delivered to the Clerk's Office, 62 Bayview Avenue, Newmarket, Ontario.

Garfield E. Wright Chairman Robert N. Vernon Regional Clerk

COUNTY OF ONTARIO TENDERS FOR EQUIPMENT

Sealed Tenders clearly marked as to contents will be received by the undersigned until 4:00 p.m. April 11, 1972, for the following equipment.

- 29,000 lb. G.V.W. Truck, cab and chassis with snow plow equipment — No trade in.
- 29,000 lb. G.V.W. Truck, cab and chassis with a stake platform — Trade in — 1967 G.M.C. cab and chassis G.V.W. 31,000 lb.
- 7,800 lb. G.V.W. Truck, cab and chassis with a stake platform — Trade in — 1968 Chevrolet cab, chassis and stake platform G.V.W. 7,800 lb.
- 7,800 lb. G.V.W. Truck, cab and chassis with a stake platform — Trade in — 1969 G.M.C. cab, chassis and stake platform G.V.W. 7,800 lb.
- 7,800 lb. G.V.W. Truck, cab and chassis only — Trade in — 1968 Chevrolet cab and chassis only, G.V.W. 7,800 lb.
- 7,800 lb. G.V.W. Truck, cab and chassis only — Trade in — 1968 Chevrolet cab and chassis only, G.V.W. 7,800 lb.
- Tractor with mower attachment — Minimum Drawbar H.P. — 25 H.P.

Tenders must be submitted on forms supplied by the County of Ontario.

Tender forms, specifications and further information may be obtained from the office of the undersigned.

Lowest or any tender not necessarily accepted.

W. A. Twelvetrees, P. Eng. County Engineer County of Ontario 605 Rossland Road East Whitby, Ontario. Telephone 416-668-6848.

TOOL & DIE MAKER

Required for modern plant in Markham, Ontario. Must have minimum of five-years experience on all phases of tool & die making with emphasis on constructing, maintaining and repairing progressive dies. Applicant must have ability to diagnose die problems and implement corrective repairs.

For further information apply in person or phone Manager, Employee Relations, 294-4000.

Amalgamated Electric Corporation Ltd., Bullock Dr., Markham, Ontario.

COMPRESSION MOLDING SET-UP MAN

Must have experience on set-up of semi-automatic and automatic phenolic moulding presses, including related equipment such as pre-heaters, temperature pressure and time controls. Attractive starting rate and benefits.

For further information apply in person or phone Manager, Employee Relations, 294-4000.

Amalgamated Electric Corporation Ltd., Bullock Dr., Markham, Ontario.

The Regional Municipality of York TENDERS FOR MOTOR VEHICLES

SEALED TENDERS properly marked as to contents will be received by the undersigned until 11:00 a.m. E.S.T. on

TUESDAY, APRIL 11th, 1972

for the supply of: Eight — 26,000 GVW Trucks with box and hoist One — ¾ Ton Pick-up One — ½ Ton Pick-up Two — Station Buses

Specifications, tender forms and information to Bidders may be obtained at the office of the Engineering Department on the Don Mills Road, one and one-quarter miles north of the Aurora Road (Mailing Address: P.O. Box 296, Newmarket) on and after 12 noon Tuesday, March 28th, 1972. The lowest or any tender not necessarily accepted. Tenders shall be delivered to the Clerk's Office, 62 Bayview Avenue, Newmarket, Ontario.

Garfield E. Wright Chairman Robert N. Vernon Regional Clerk

Teams tie

STOUFFVILLE - In the first game of the Pee Wee championship, Stouffville Legion and Hetherington Electric tied 2-2. Barry Sanders potted both Legion goals with Andrew Gibson picking up one assist. Bill Kingsley and Rick Shaw evened the count for Hetherington's.

Pine Hill Auto blanked Stouffville, Cop 5-0. Danny Gibson fired four goals and Mike Boardway one. Apache Freight Lines edged Master feeds 5-4. Apache had goals from John Christie, Ed Sidsworth, Harold Smalley, Bill Snowball and Jim Toman. Master Feed scorers were Dale Knabb and Tony Arrigo each with a pair.

D & A Construction took an easy 7-1 win from Mayflower Farms. The winner's scorers were David Huxtable (3), Jim Hamm, John LaBrie, Robin Cornelius and Bradd Wilbur. Cameron Macdonald scored the Mayflower goal unassisted.



The old butter churn went out of fashion before 15 year old Danielle Petch was born. For Danielle's grandmother, it was probably a necessity. For her, it's a novelty. —Jim Thomas.

Allan Lewis Three-goal marksman

STOUFFVILLE - Shoes 5-3. Tim Allen scored 3 goals with singles going to Barry Greenshield and Peter Bass. Dale Leger rifled in 2 tallies for Lehman's and brother Tony one.

Consolidated Sand & Gravel tied 3-3 with Stouffville Kinsmen. Mark Boardway had a goal and an assist for the truckers with singles by Robert Milwain and Gary Legault. Jeff Staples, Glen Chairen and

Country Ready Mix defeated Lehman

Legion ladies

STOUFFVILLE - Sadie Greenshield rolled a 685 triple and a 332 single, to lead the Legion Ladies League, March 14.

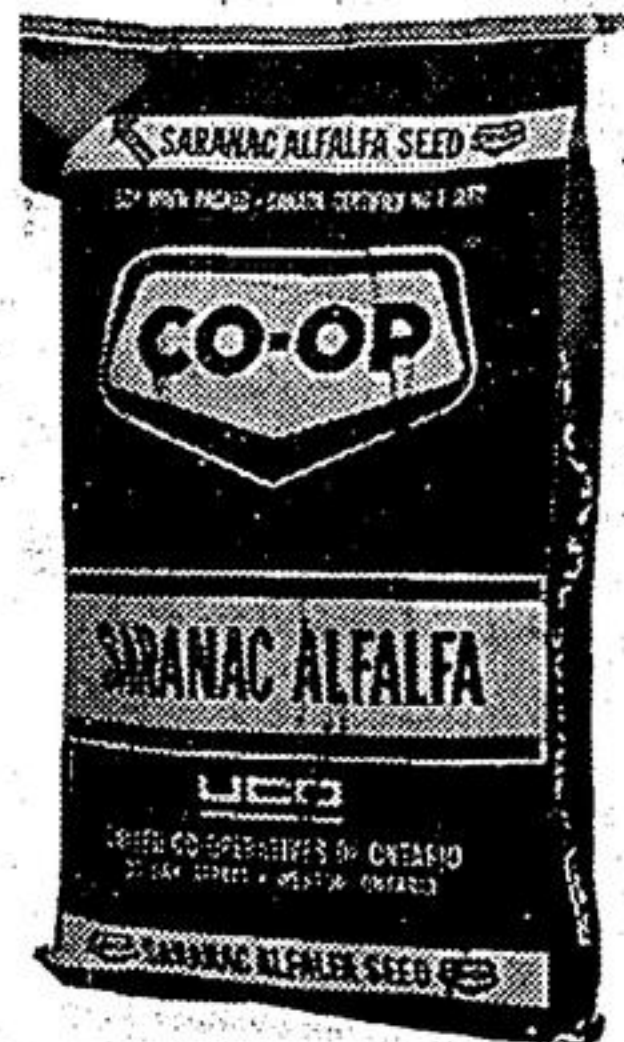
Scores of over 200 were counted by: Gladys Clarkson, 278; Adele Willis, 247; Jean Foley, 209-221; Doris Farthing, 234-230; Joan VanKoughnet, 202-245; Sadie Greenshield, 332; Hazel Wilson, 208; Ev McKay, 207; Gaye Lehman, 297; Susan Carter, 217; Beverley Marshman, 206; Lois Bartley, 224; Barbara Thomas, 219; June Ward, 202; Joanne Harper, 223-241; Tiny Stewart, 207-201.

Wayne Butler scored for the Kinsmen.



NORMAN FRETZ MEATS
Custom Slaughtering—Freezer Orders RR 3 CLAREMONT 640-3125
Choice Cut Meats Thurs., Fri., Sat.

High quality seed gives you low cost feed



just add soil, fertilizer, water and sunshine

The higher intake and digestibility of quality forage can increase your milk production. Seed costs are only a small percentage of production costs. For pennies an acre, you take advantage of this and other proven adapted varieties for better assurance of profitable production.

Quality forage starts with quality seed.

STOUFFVILLE CO-OP

47 Edward St. — Stouffville 640-1550

CO-OP Saranac Alfalfa

BRAKE JOB

Most Chrysler — Plymouth Cars (Parts & labour Included)

\$28.50



CALL NOW— Ask for ERIC. MAIN ST. W. STOUFFVILLE 640-2400 LIMITED

4-2 win over Stouffville Kinsmen. Greg House notched the other tally on a pass from Mark Nevin. Jeff Hutchinson and Glen Chairns scored the Kinsmen goals.

Shut-out

STOUFFVILLE - Aida Cleaners, led by Harvey Yarranton's 4 goals defeated Schell Lumber 6-0 in Mite League action. Kevin Smith potted a pair. Barry Greenshield also had 4 goals and an assist to lead Country Ready-Mix to a 5-3 win over Becker's Milk. Tim Allen scored the other goal and earned 3 assists. Tony Herold scored 2 for Becker's and Jeff Reynolds one.

Lehman Shoes took a 6-3 win from Consolidated Sand & Gravel. Tony Leger scored 3 goals, Greg Tait 2, while Dale Leger had a goal and an assist. Mark Boardway, Jeff McCurdy and Jim Reid replied for the sandmen.

David Winnitoy scored 3 goals to lead Raymer Interiors to a

Golden Lamb TAVERN
Matinee Entertainment with Jim & Larry
GOLDEN LAMB RESTAURANT TAVERN
HIGHWAY 7 JUST WEST OF 48, MARKHAM
FOR RESERVATIONS CALL: 294-3210